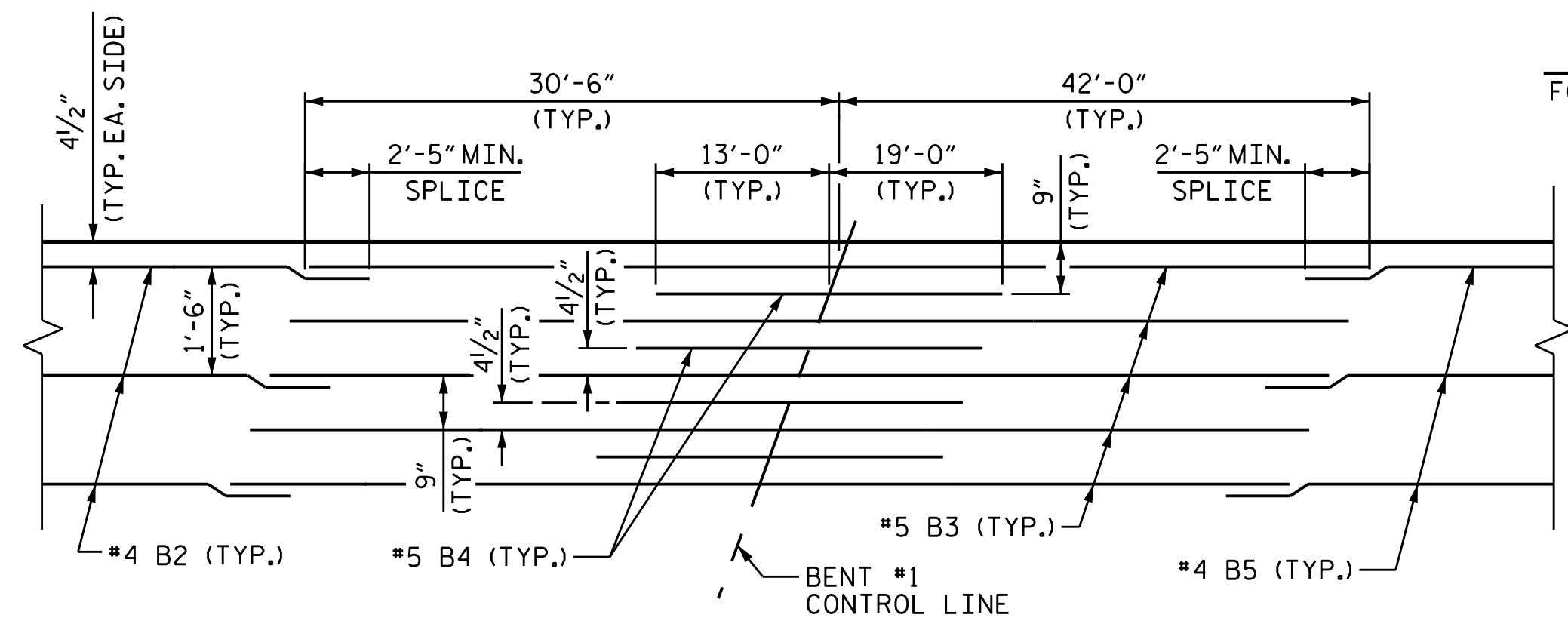
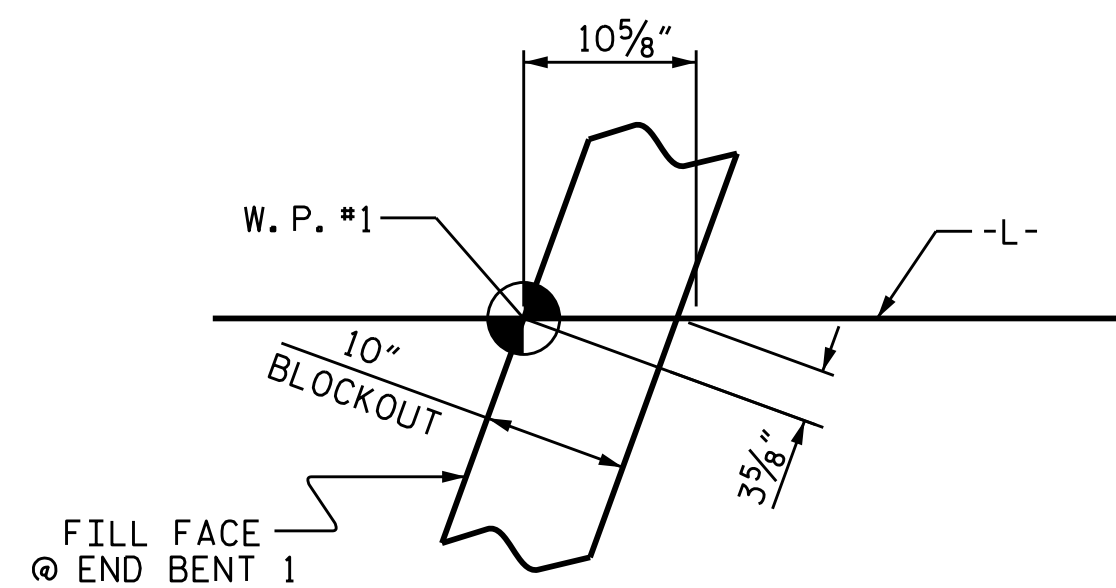


PLAN OF SPAN A

FOR INTERMEDIATE STEEL DIAPHRAGMS, SEE "INTERMEDIATE STEEL DIAPHRAGMS" SHEET.
FOR TOP OF SLAB REINFORCING AT BENT, SEE "DETAIL B AT BENT 1".



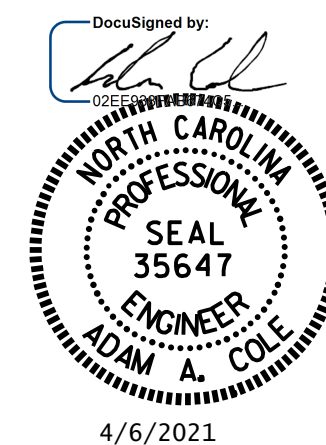
DETAIL B AT BENT 1



DETAIL A

PROJECT NO. B-5813
CABARRUS COUNTY
STATION: 21+85.00 -L-

SHEET 1 OF 2



STATE OF NORTH CAROLINA
DEPARTMENT OF TRANSPORTATION
RALEIGH

PLAN OF SPAN A

DRAWN BY: M. G. SHAIKH DATE: 06/2019
CHECKED BY: H. LOCKLEAR DATE: 08/2019
DESIGN ENGINEER OF RECORD: H. LOCKLEAR DATE: 06/2019

DOCUMENT NOT CONSIDERED
FINAL UNLESS ALL
SIGNATURES COMPLETED

REVISIONS						SHEET NO.
NO.	BY:	DATE:	NO.	BY:	DATE:	S-8
1			3			TOTAL SHEETS
2			4			29