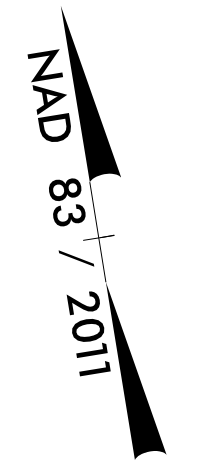
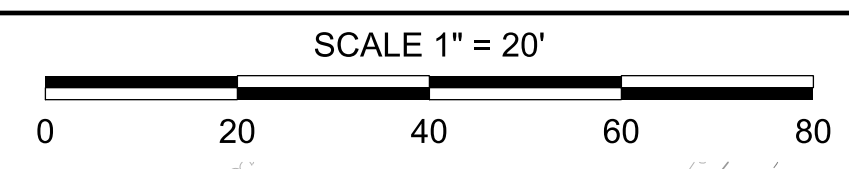


SEQUENCE OF CONSTRUCTION:

1. INSTALL TEMPORARY BYPASS PUMPING AROUND PROJECT.
2. REMOVE EXISTING DOWNSTREAM MANHOLE.
3. INSTALL NEW CASING BY WELDING TO EXISTING CASING.
4. INSTALL PROPOSED GRAVITY SEWER AND CASING NORTHWARD TO MANHOLE #1.
5. INSTALL REMAINDER OF PROPOSED GRAVITY SEWER TO MANHOLE #2.
6. TEST NEW PIPE AND MANHOLES.
7. ACTIVATE NEW SEWER.



PROJECT REFERENCE NO.	SHEET NO.
B-5813	UC-5
DESIGNED BY: VHM	
DRAWN BY: VHM	
CHECKED BY: ASV	
APPROVED BY: XMD	
REVISED:	
NORTH CAROLINA DEPARTMENT OF TRANSPORTATION UTILITIES ENGINEERING SEC. PHONE: (919) 707-6690 FAX: (919) 250-4151	
UTILITY CONSTRUCTION PLANS ONLY	

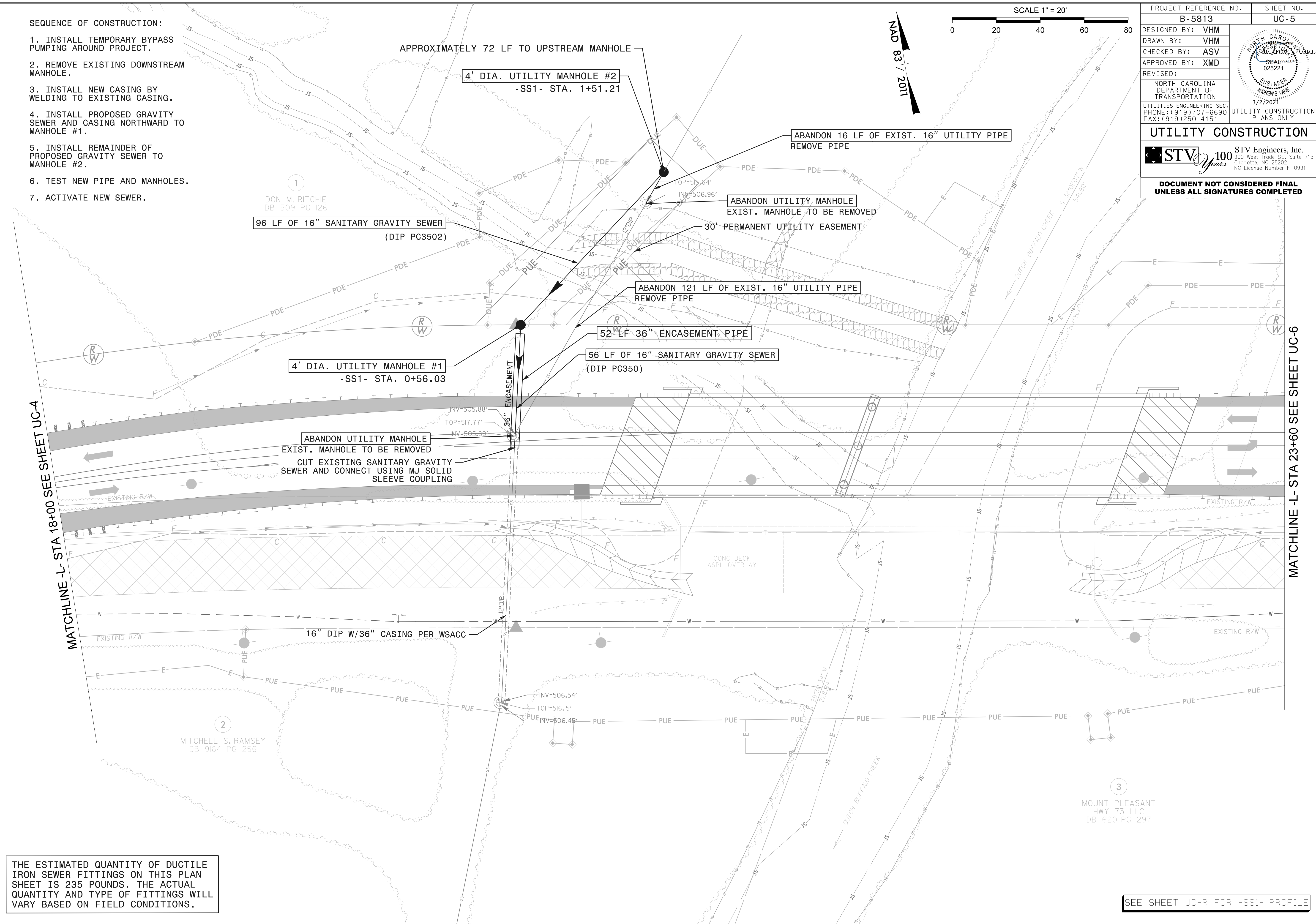
UTILITY CONSTRUCTION

STV Engineers, Inc.
 900 West Trade St., Suite 715
 Charlotte, NC 28202
 NC License Number F-0991

DOCUMENT NOT CONSIDERED FINAL UNLESS ALL SIGNATURES COMPLETED

MATCHLINE -L- STA 18+00 SEE SHEET UC-4

MATCHLINE -L- STA 23+60 SEE SHEET UC-6



THE ESTIMATED QUANTITY OF DUCTILE IRON SEWER FITTINGS ON THIS PLAN SHEET IS 235 POUNDS. THE ACTUAL QUANTITY AND TYPE OF FITTINGS WILL VARY BASED ON FIELD CONDITIONS.

SEE SHEET UC-9 FOR -SS1- PROFILE