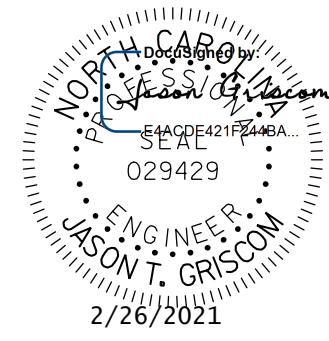
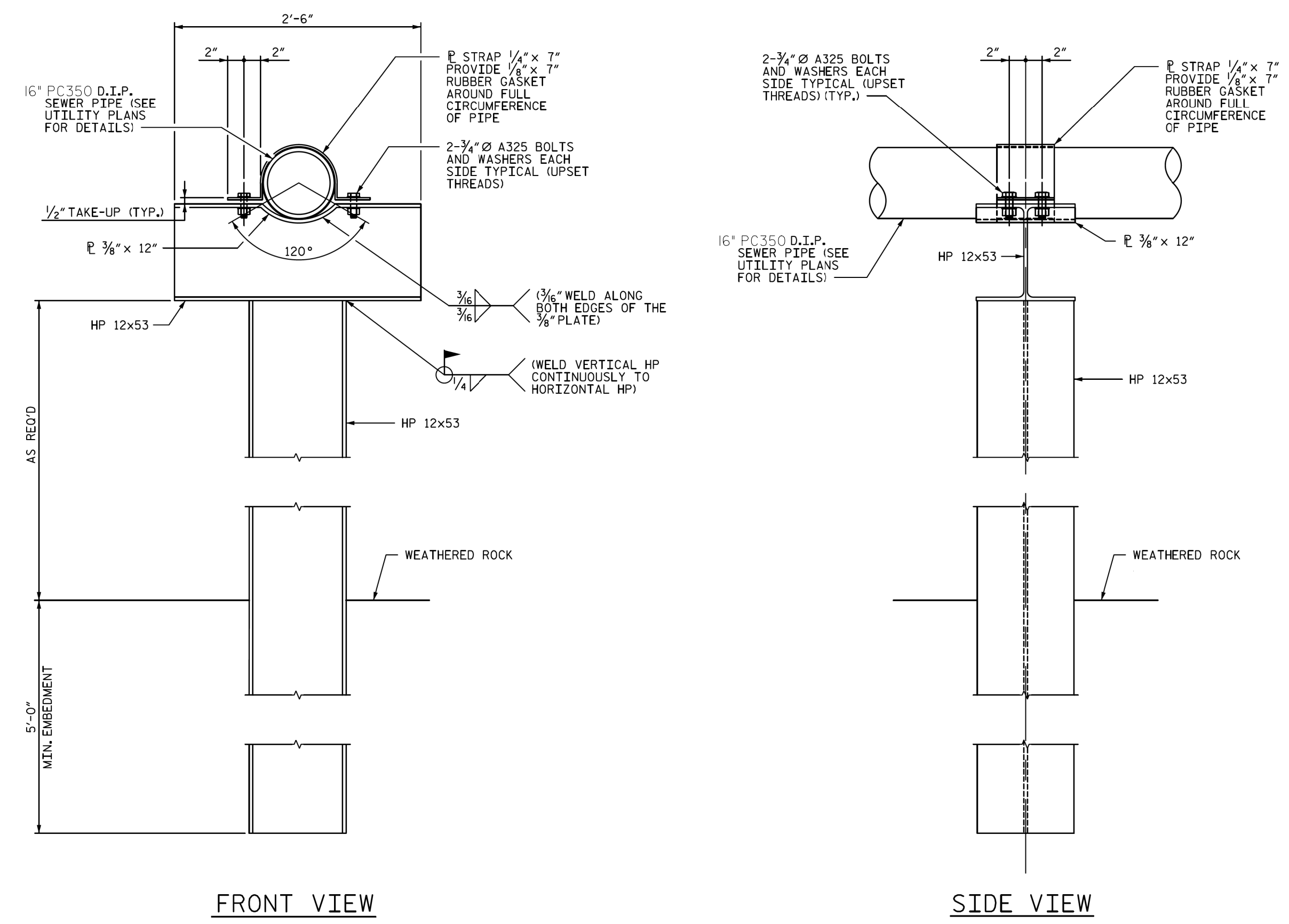
 <b>STV Engineers, Inc.</b> 900 West Trade St., Suite 715 Charlotte, NC 28202 NC License Number F-0991	PROJECT REFERENCE NO.	SHEET NO.
	<b>B-5813</b>	<b>UC-3C</b>
<b>DOCUMENT NOT CONSIDERED FINAL UNLESS ALL SIGNATURES COMPLETED</b>	DESIGNED BY: <b>VHM</b>	
	DRAWN BY: <b>VHM</b>	
	CHECKED BY: <b>ASV</b>	
	APPROVED BY: <b>XMD</b>	
	REVISED:	
NORTH CAROLINA DEPARTMENT OF TRANSPORTATION		UTILITY CONSTRUCTION PLANS ONLY
UTILITIES ENGINEERING SEC. PHONE: (919) 707-6690 FAX: (919) 250-4151		



FRONT VIEW

SIDE VIEW

AERIAL SEWER SUPPORT

NOTES:

1. FOR AERIAL SEWER SUPPORT LOCATIONS, SEE SHEET UC-9.
2. STEEL H-PILES SHALL CONFORM TO THE REQUIREMENTS OF ASTM A992 GRADE 50.
3. ALL PILE LOCATIONS SHALL BE STAKED IN THE FIELD.
4. ALL WELDS SHALL BE IN ACCORDANCE WITH THE CURRENT AWS AND BE PERFORMED BY A CERTIFIED WELDER.
5. ALL STEEL MEMBERS AND STRAPS SHALL BE POWER TOOL CLEANED TO A MIN. OF SSPC-SP3 AND HOT-DIP GALVANIZED PER ASTM A123.
6. BOLTS AND WASHERS WILL BE HOT-DIP GALVANIZED PER ASTM A153. ALL WELDS SHALL BE GROUND AND COATED WITH 2 COATS OF A COLD APPLIED GALVANIZING PAINT.
7. BOLTS SHALL BE ASTM A325 WITH CORRESPONDING NUTS AND WASHERS.
8. ALL WELDS SHALL BE GROUND AND COATED WITH 2 COATS OF A COLD APPLIED GALVANIZING PAINT.
9. HOLES IN THE HP MEMBER FOR THE BOLTS AND POST-INSTALLED ANCHORS SHALL BE SIZED 1/16" LARGER THAN THE DIAMETER OF THE ITEM GOING THROUGH THE ITEM.
10. THE CONTRACTOR SHALL VERIFY THE SEWER PIPE ELEVATION AND ADJUST AERIAL SEWER SUPPORT ELEVATION AS NECESSARY TO MATCH SEWER PIPE ELEVATION.

FOUNDATION NOTES:

1. DRILLED-IN PILES ARE REQUIRED FOR THE AERIAL SEWER SUPPORTS.
2. EXCAVATE HOLES AT PILE LOCATIONS WITH A MINIMUM OF 5 FEET INTO WEATHERED ROCK.
3. FILL THE BOTTOM 5 FT OF THE HOLE WITH CONCRETE AND THE REST OF THE HOLE WITH CLASS II OR CLASS III SELECT MATERIAL THAT MEETS SECTION 1016 OF THE STANDARD SPECIFICATIONS.
4. FOR PILE EXCAVATION, SEE SECTION 450 OF THE STANDARD SPECIFICATIONS.
5. CONCRETE SHALL BE CLASS A CONCRETE PER THE NCDOT STANDARD SPECIFICATION FOR ROADS AND STRUCTURES.