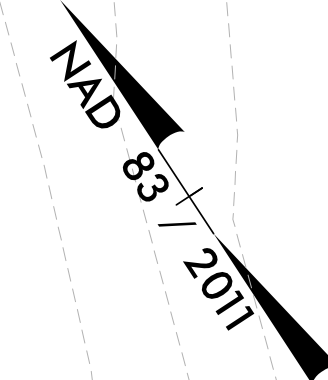


8/17/99

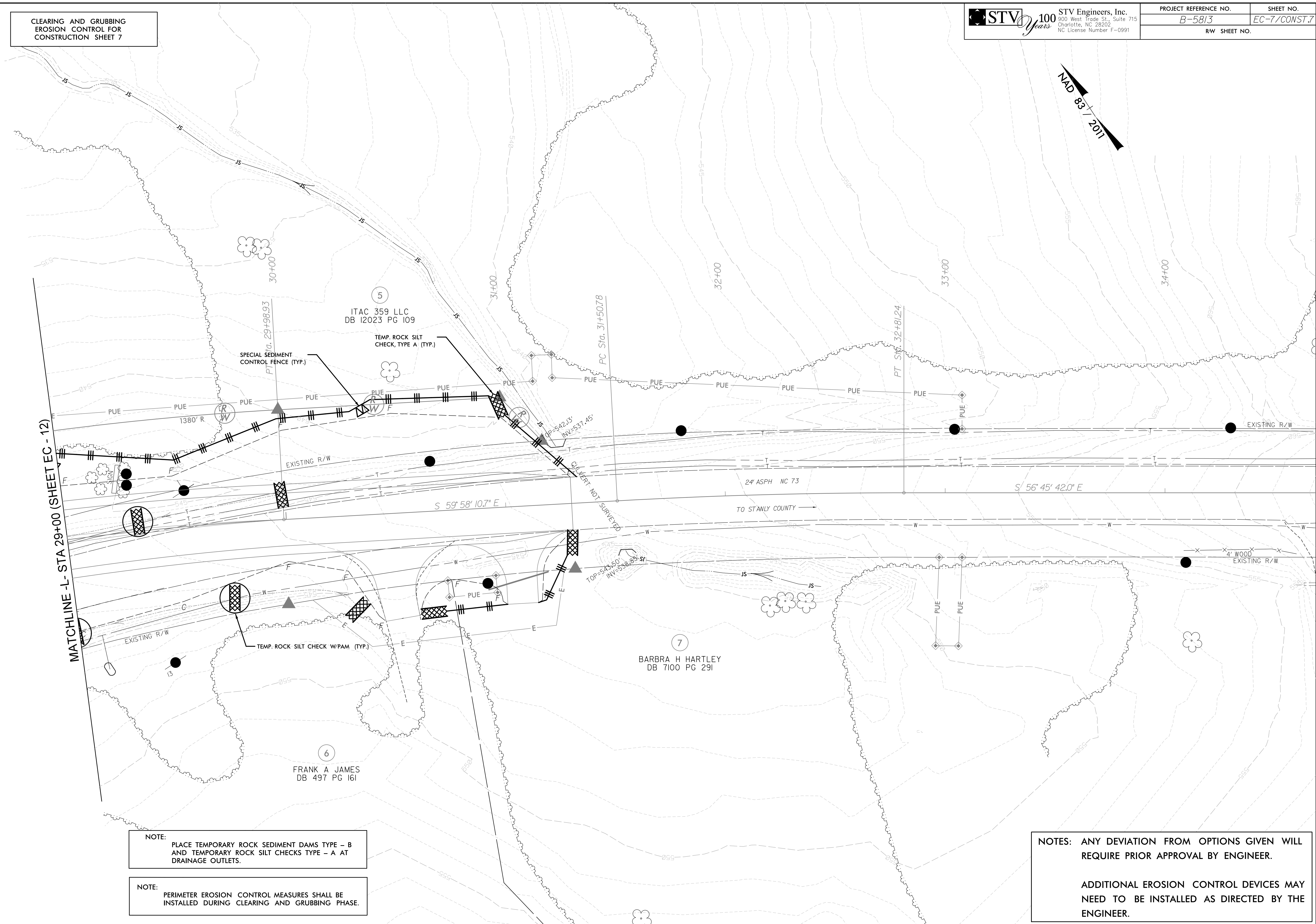
CLEARING AND GRUBBING  
EROSION CONTROL FOR  
CONSTRUCTION SHEET 7

**STV** 100 Years  
STV Engineers, Inc.  
500 West Trade St., Suite 715  
Charlotte, NC 28202  
NC License Number F-0991

PROJECT REFERENCE NO.	SHEET NO.
B-5813	EC-7/CONST.7
RW SHEET NO.	



MATCHLINE -L- STA 29+00 (SHEET EC - 12)



NOTE:  
PLACE TEMPORARY ROCK SEDIMENT DAMS TYPE - B  
AND TEMPORARY ROCK SILT CHECKS TYPE - A AT  
DRAINAGE OUTLETS.

NOTE:  
PERIMETER EROSION CONTROL MEASURES SHALL BE  
INSTALLED DURING CLEARING AND GRUBBING PHASE.

NOTES: ANY DEVIATION FROM OPTIONS GIVEN WILL  
REQUIRE PRIOR APPROVAL BY ENGINEER.

ADDITIONAL EROSION CONTROL DEVICES MAY  
NEED TO BE INSTALLED AS DIRECTED BY THE  
ENGINEER.

3/2/2021  
C:\Environmental\Design\EC\_Sheets\B5813\_EC\_PSH07.dgn  
Bavaria