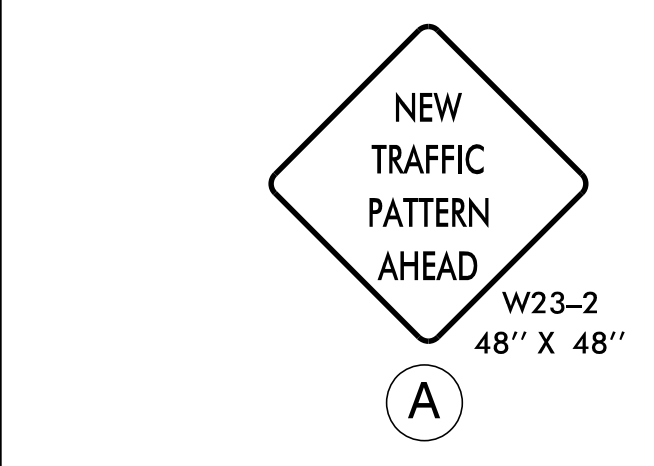
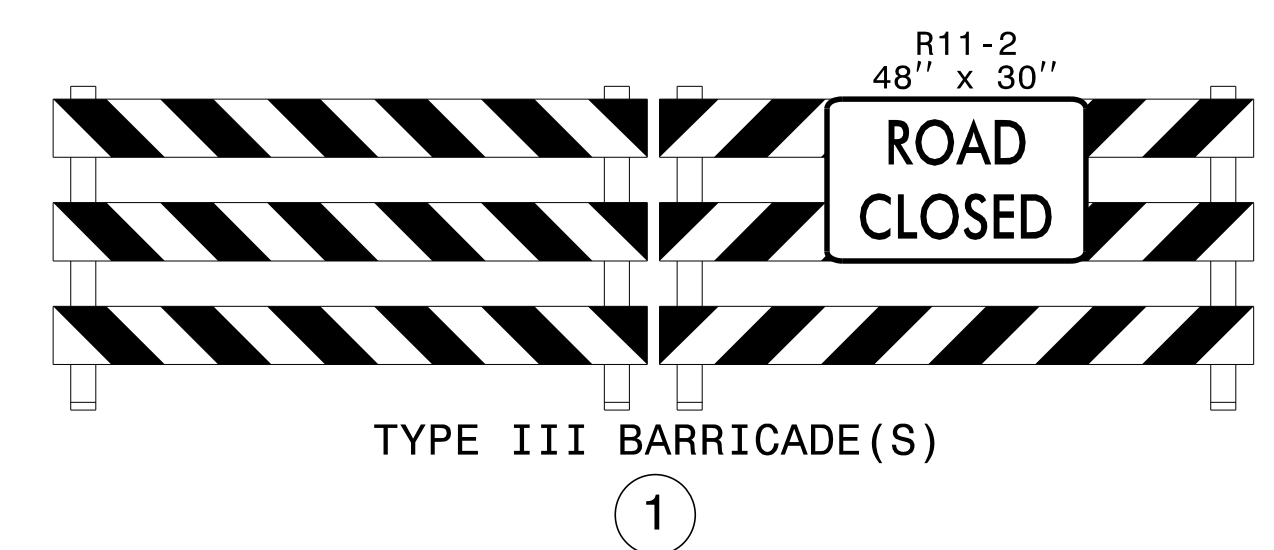


NOTE: THE CONTRACTOR SHALL PROVIDE ACCESS TO DRIVES AT ALL TIMES.



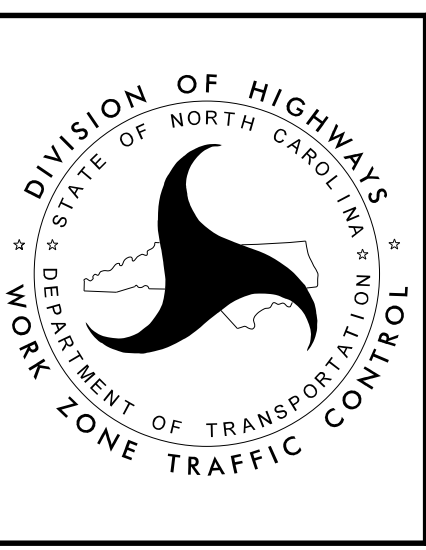
TEMPORARY PAVEMENT MARKING LEGEND	
P1	- PAINT - WHITE EDGELINE - (4")
P2	- PAINT - WHITE SOLID LANE LINE - (4")
P4	- PAINT - 3 FT. - 9 FT./SP WHITE MINISKIP - (4")
P5	- PAINT - 2 FT. - 6 FT./SP WHITE MINISKIP - (4")
P13	- PAINT - YELLOW DOUBLE CENTER - (4")
P52	- PAINT - YELLOW DIAGONAL - (12")
P61	- PAINT - WHITE STOP BAR - (24")
P70	- PAINT - LEFT TURN ARROW
MA	- MARKER - TEMPORARY RAISED (YELLOW & YELLOW)

REFER TO RSD NOS. 1205.01 AND 1205.02 FOR PLACEMENT OF TEMPORARY PAVEMENT MARKINGS UNLESS NOTED OTHERWISE.

APPROVED: Don A. Parker
40042802619410

DATE: 7/7/2021

DOCUMENT NOT CONSIDERED FINAL UNLESS ALL SIGNATURES COMPLETED



PHASE II DETAILS

3/16/2021 P:\TIP\Projects-B\B5813\TrafficControl\TCP\B5813_TC_TMP_9.dgn User:smackfilu