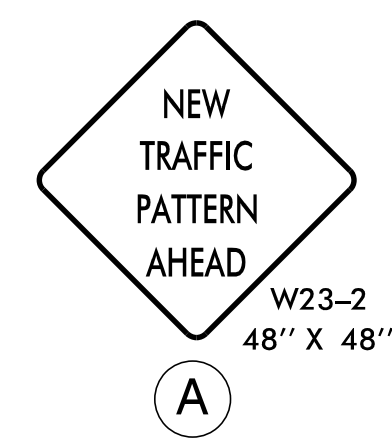
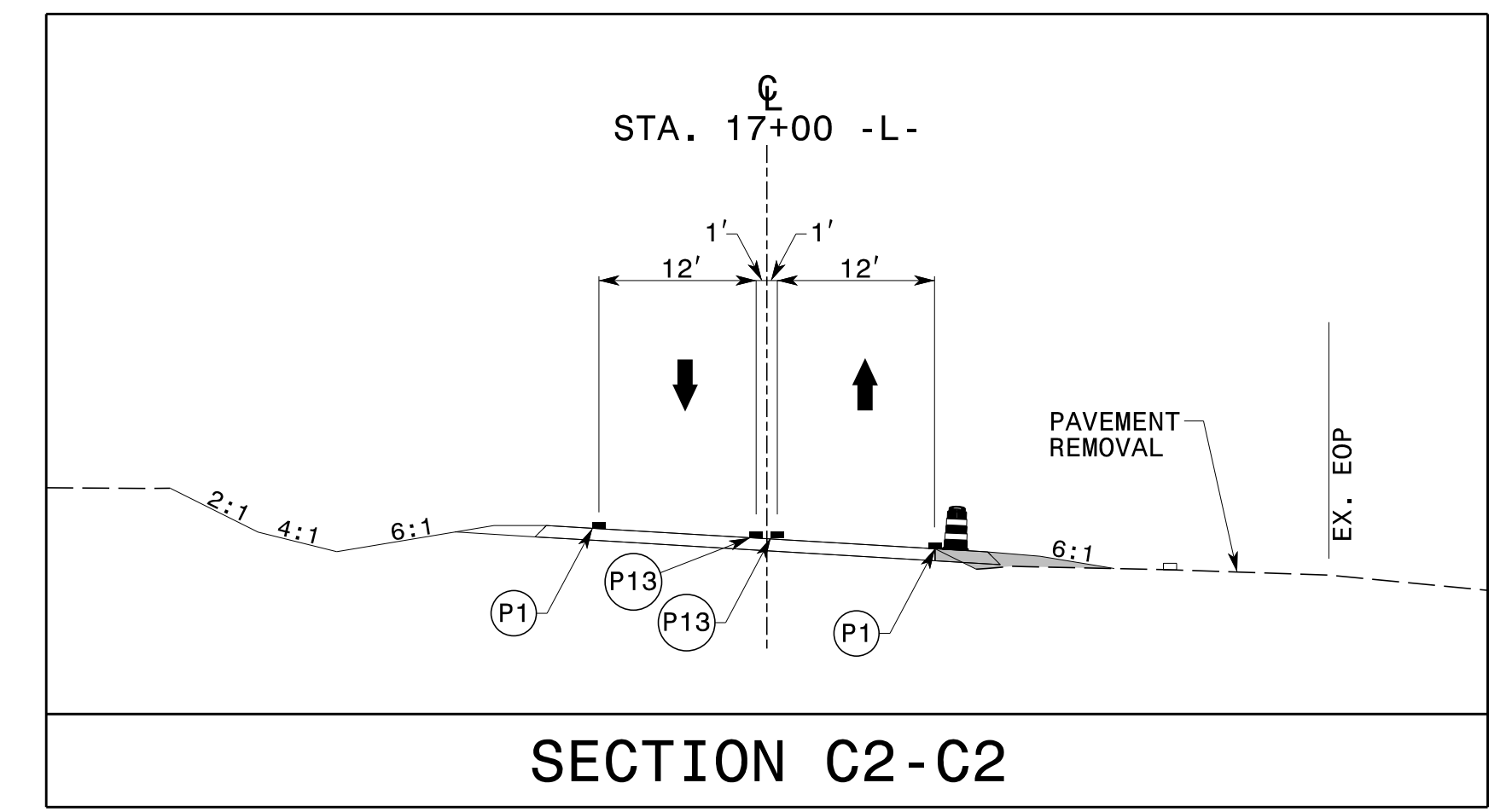
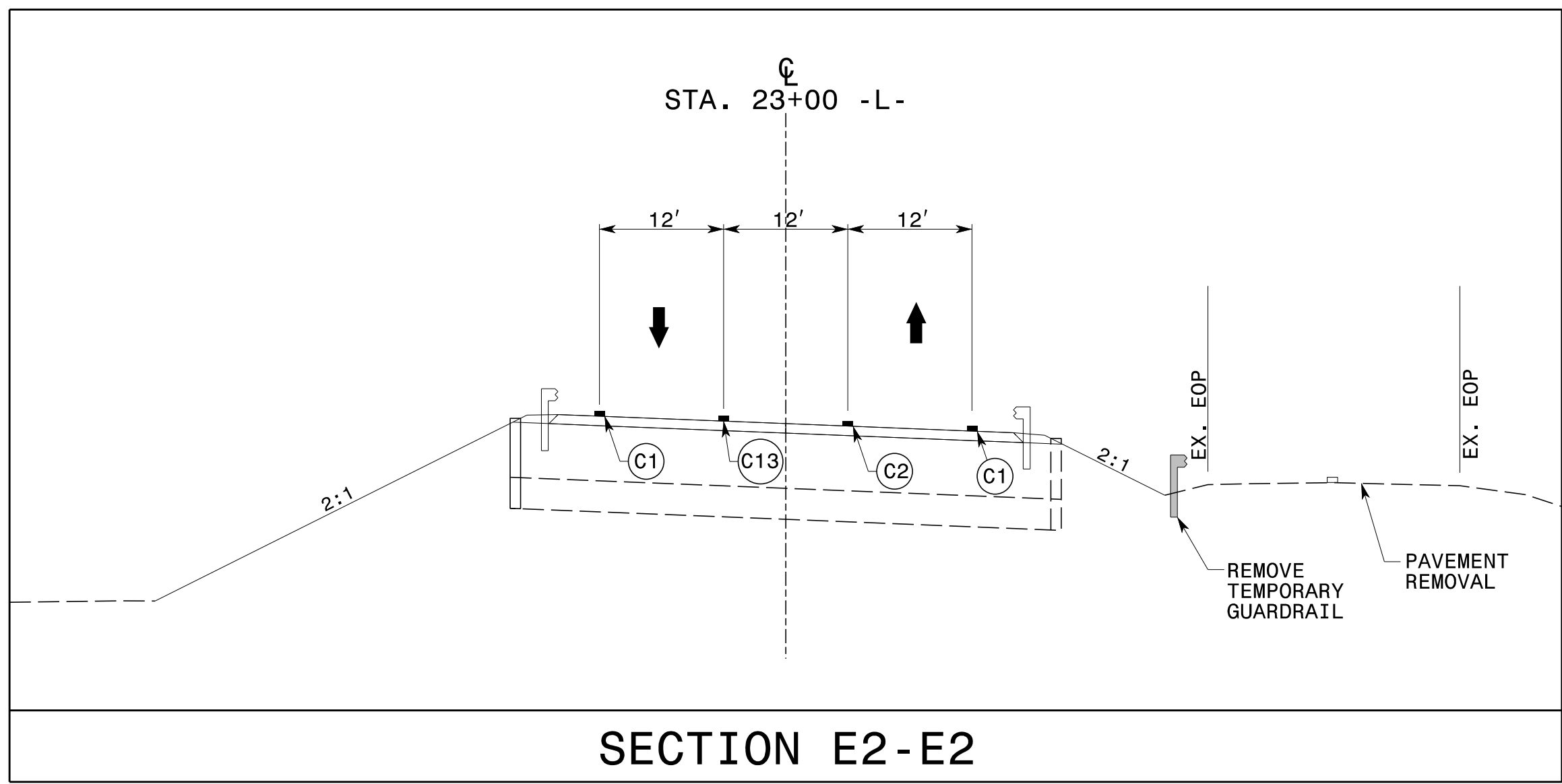
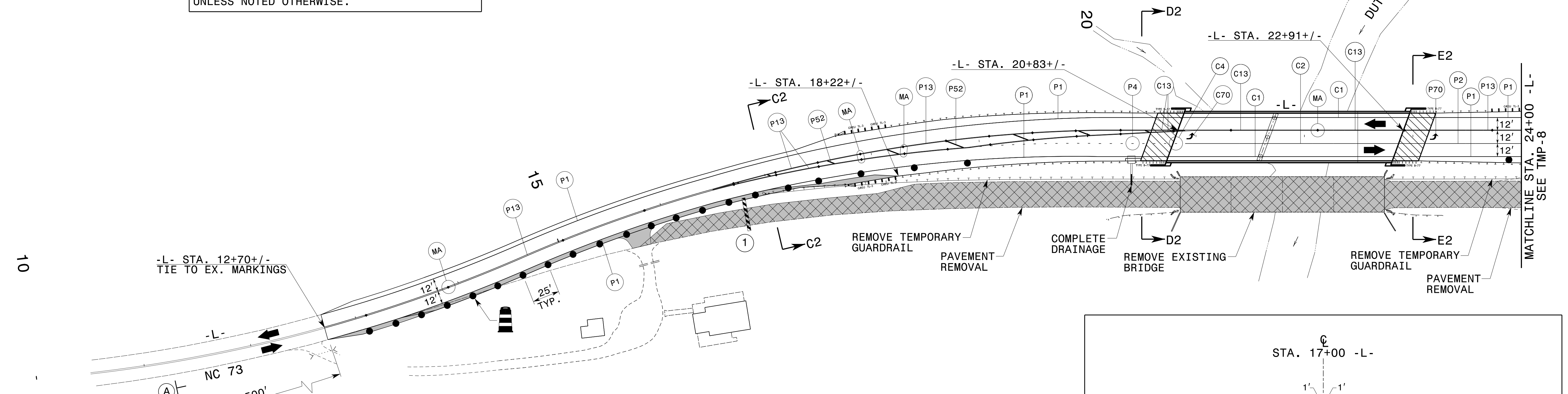
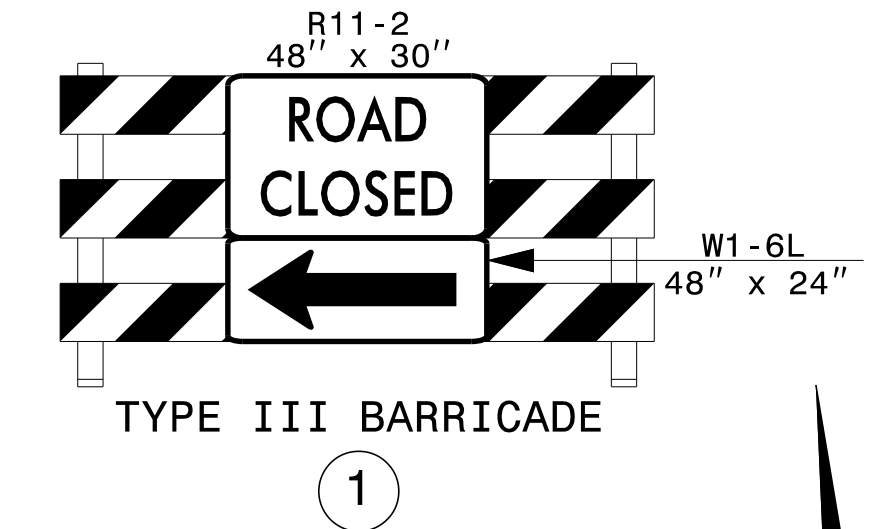
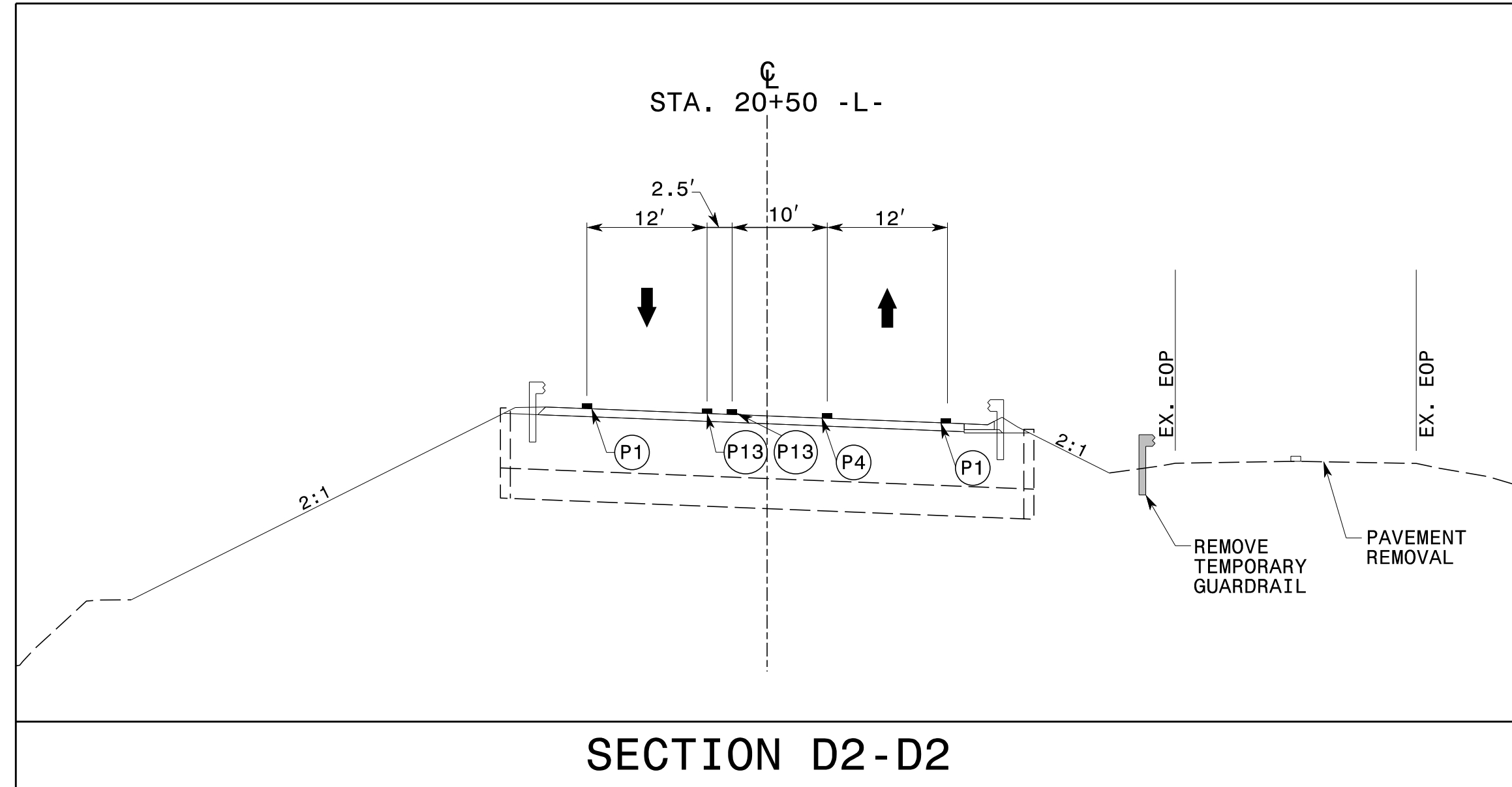
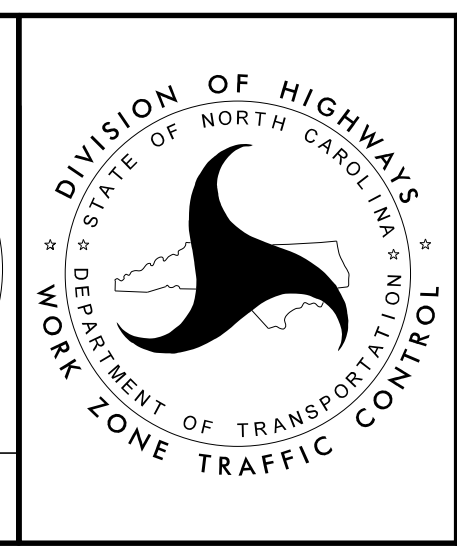


TEMPORARY PAVEMENT MARKING LEGEND	
C1(IV)	- COLD APPLIED PLASTIC (TYPE 4) - WHITE EDGELINE - (4")
C2(IV)	- COLD APPLIED PLASTIC (TYPE 4) - WHITE SOLID LANE LINE - (4")
C4(IV)	- COLD APPLIED PLASTIC (TYPE 4) - 3 FT. - 9 FT./SP WHITE MINISKIP- (4")
C13(IV)	- COLD APPLIED PLASTIC (TYPE 4) - YELLOW DOUBLE CENTER - (4")
C70(IV)	- COLD APPLIED PLASTIC (TYPE 4) - LEFT TURN ARROW
P1	- PAINT - WHITE EDGELINE - (4")
P2	- PAINT - WHITE SOLID LANE LINE - (4")
P4	- PAINT - 3 FT. - 9 FT./SP WHITE MINISKIP - (4")
P13	- PAINT - YELLOW DOUBLE CENTER - (4")
P52	- PAINT - YELLOW DIAGONAL - (12")
P70	- PAINT - LEFT TURN ARROW
MA	- MARKER - TEMPORARY RAISED (YELLOW & YELLOW)

REFER TO RSD NOS. 1205.01 AND 1205.02 FOR PLACEMENT OF TEMPORARY PAVEMENT MARKINGS UNLESS NOTED OTHERWISE.



APPROVED: *Don A. Parker*
 DATE: 7/7/2021
 SEAL 043251
 ENGINEER
 DON A. PARKER



PHASE II DETAILS

DOCUMENT NOT CONSIDERED FINAL UNLESS ALL SIGNATURES COMPLETED

3/16/2021 P:\TIP\Projects-B\B5813\TrafficControl\TCP\B5813_TC_TMP_8.dgn User:mackfilu