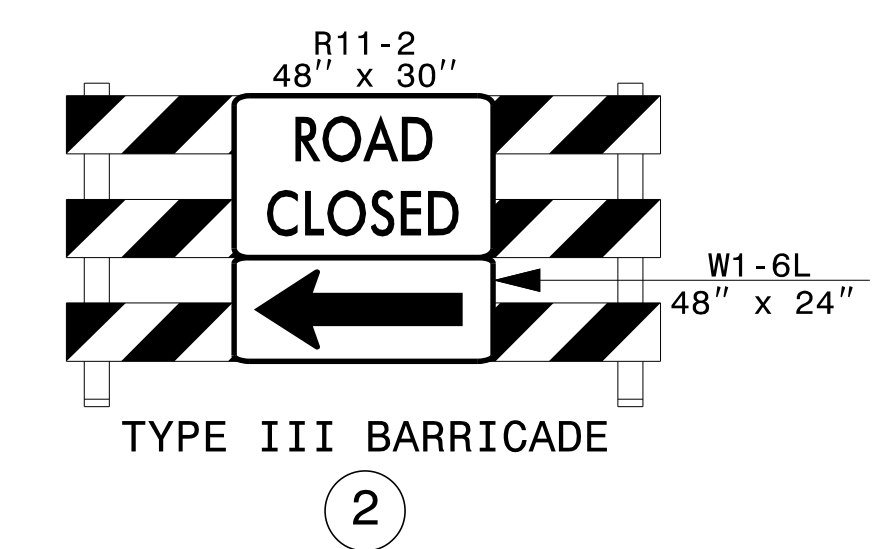
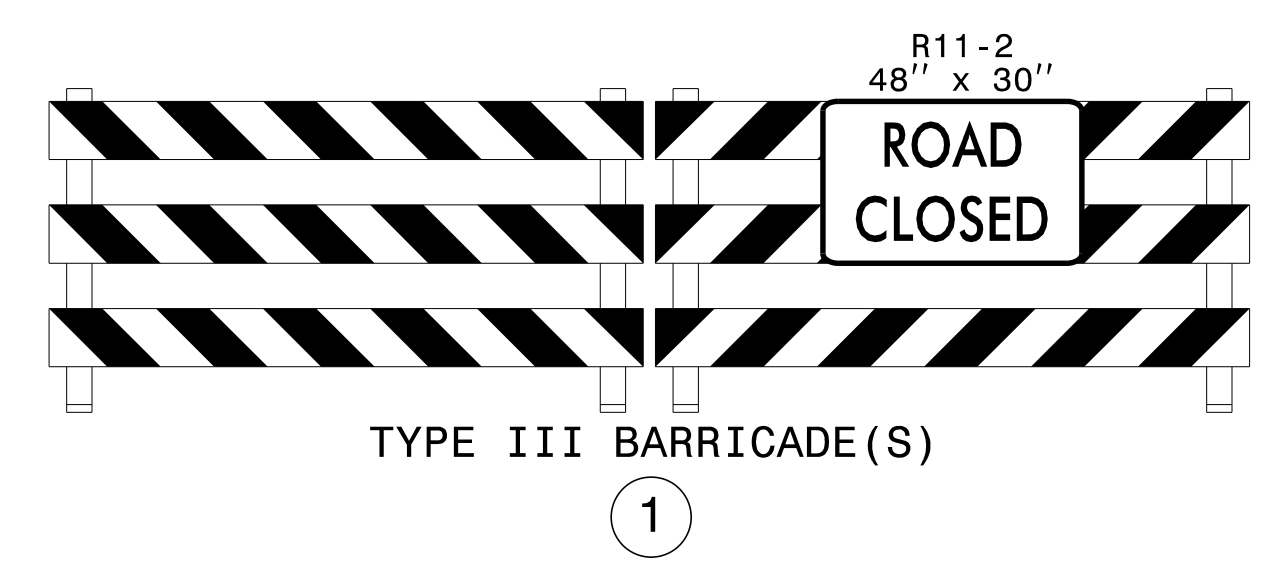


NOTE: THE CONTRACTOR SHALL PROVIDE ACCESS TO DRIVES AT ALL TIMES.

7 DAYS PRIOR TO CLOSURE		DURING CLOSURE	
MESSAGE NO. 1	MESSAGE NO. 2	MESSAGE NO. 1	MESSAGE NO. 2
BEGIN XX-XX-XX 7PM-6AM	EXPECT DELAYS	WORKERS IN ROAD AHEAD	PREPARE TO STOP
CHANGEABLE MESSAGE SIGN		CHANGEABLE MESSAGE SIGN	

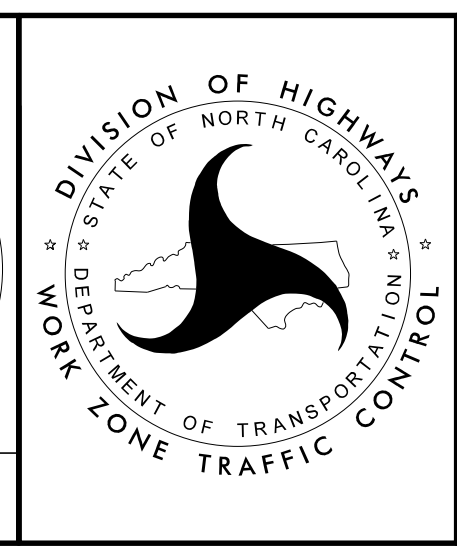
CMS MESSAGING PRIOR TO AND DURING GIRDER DELIVERY AND INSTALLATION  
 CMS INSTALLED 1/2 MILE NORTH AND SOUTH OF PROJECT



APPROVED: \_\_\_\_\_  
 DATE: 7/7/2021

Don A. Parker  
 NORTH CAROLINA PROFESSIONAL ENGINEER  
 SEAL 043251  
 DON A. PARKER

DOCUMENT NOT CONSIDERED FINAL UNLESS ALL SIGNATURES COMPLETED



PHASE I DETAILS  
 STEP 1 AND 2

3/16/2021  
 P:\TIP\Projects-B\B5813\TrafficControl\TCP\B5813\_TC\_TMP\_5.dgn  
 User:smackillu