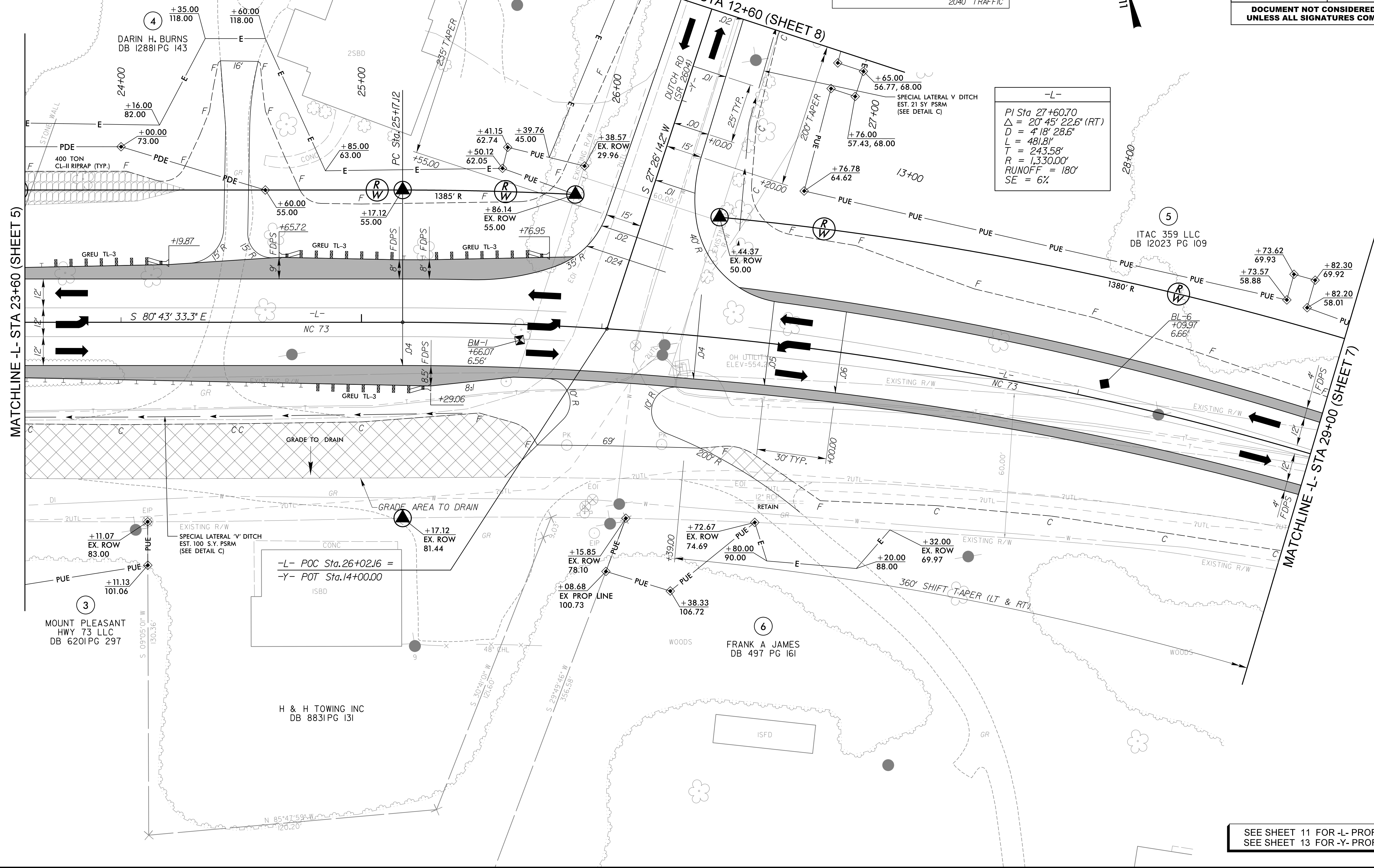
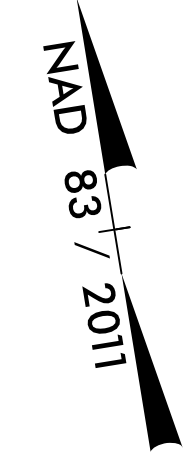
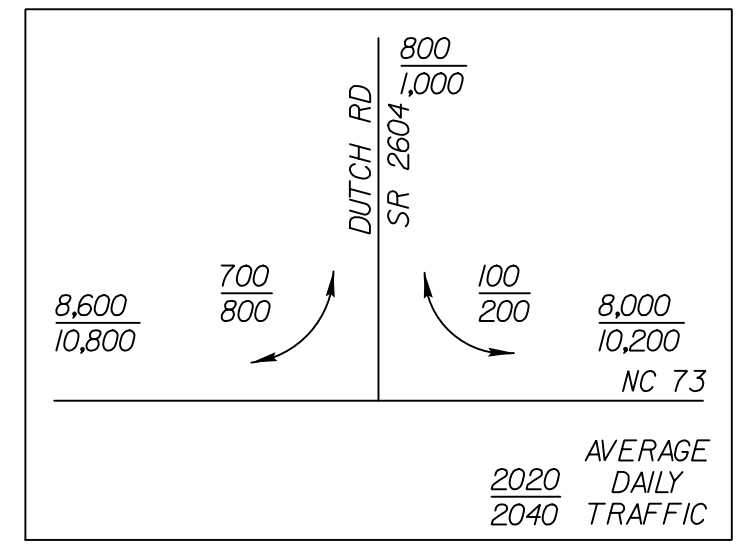


Type of Liner = PSRM

-Y- FROM STA. 10+30 LT TO STA. 12+18 LT  
 -Y- FROM STA. 12+58 LT TO STA. 13+50 LT  
 -L- FROM STA. 23+50 RT TO STA. 25+50 RT

**STV** 100 Years  
 STV Engineers, Inc.  
 300 West Trade St., Suite 715  
 Charlotte, NC 28202  
 NC License Number F-0991

PROJECT REFERENCE NO. B-5813	SHEET NO. 6
RW SHEET NO.	
ROADWAY DESIGN ENGINEER	HYDRAULICS ENGINEER
<b>DOCUMENT NOT CONSIDERED FINAL UNLESS ALL SIGNATURES COMPLETED</b>	



-L-  
 PI Sta 27+60.70  
 $\Delta = 20' 45' 22.6''$  (RT)  
 $D = 4' 18' 28.6''$   
 $L = 481.81'$   
 $T = 243.58'$   
 $R = 1,330.00'$   
 $RUNOFF = 180'$   
 $SE = 6\%$

-L- POC Sta.26+02.16 =  
 -Y- POT Sta.14+00.00

SEE SHEET 11 FOR -L- PROFILE  
 SEE SHEET 13 FOR -Y- PROFILE