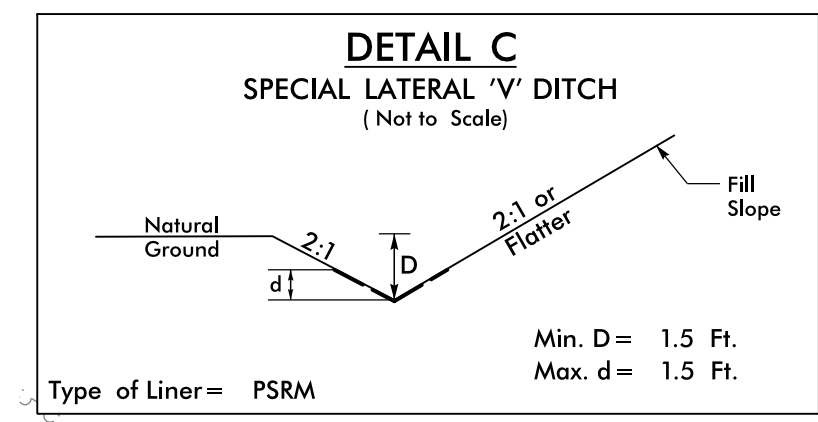
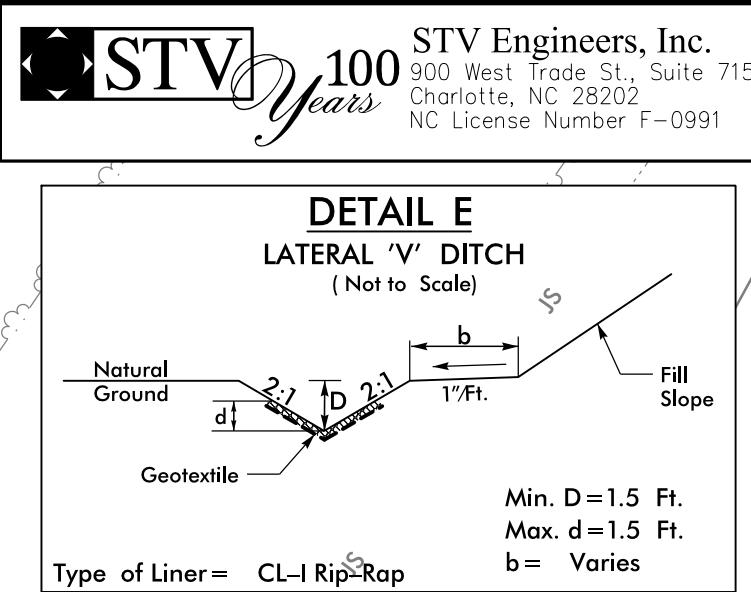
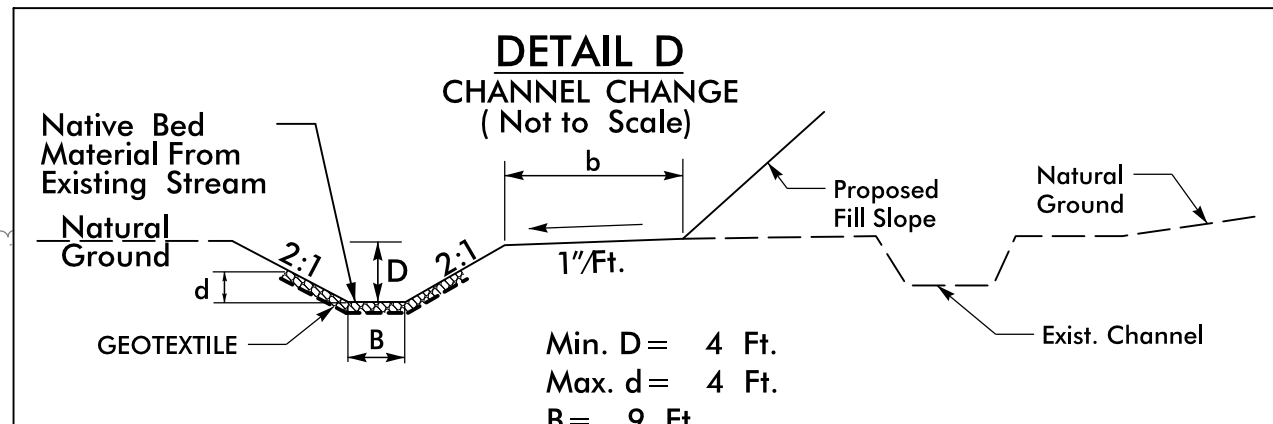
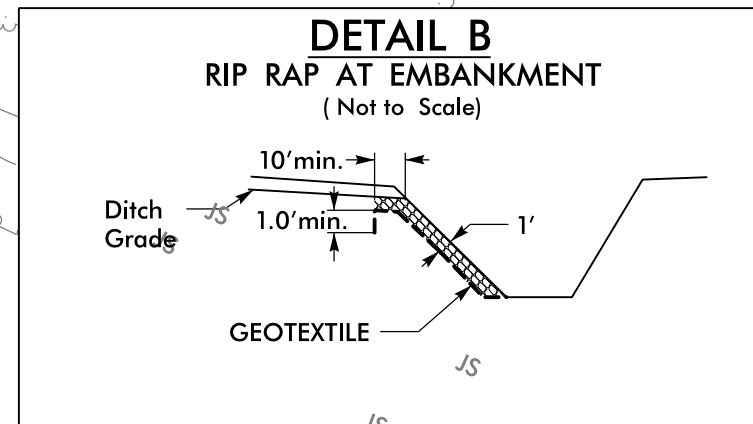
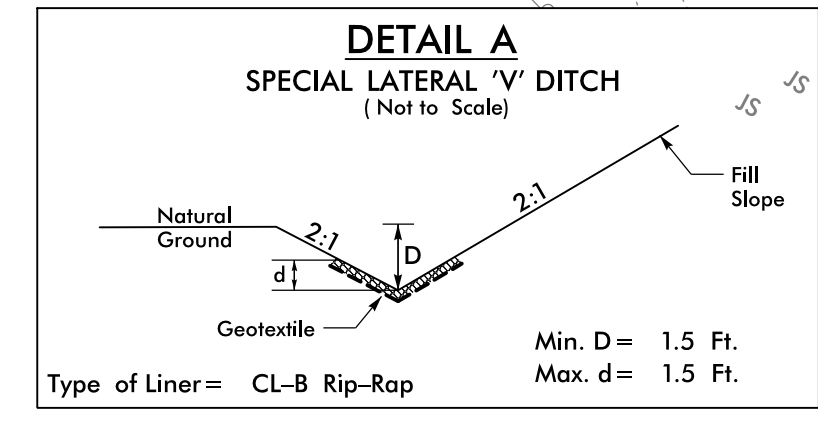
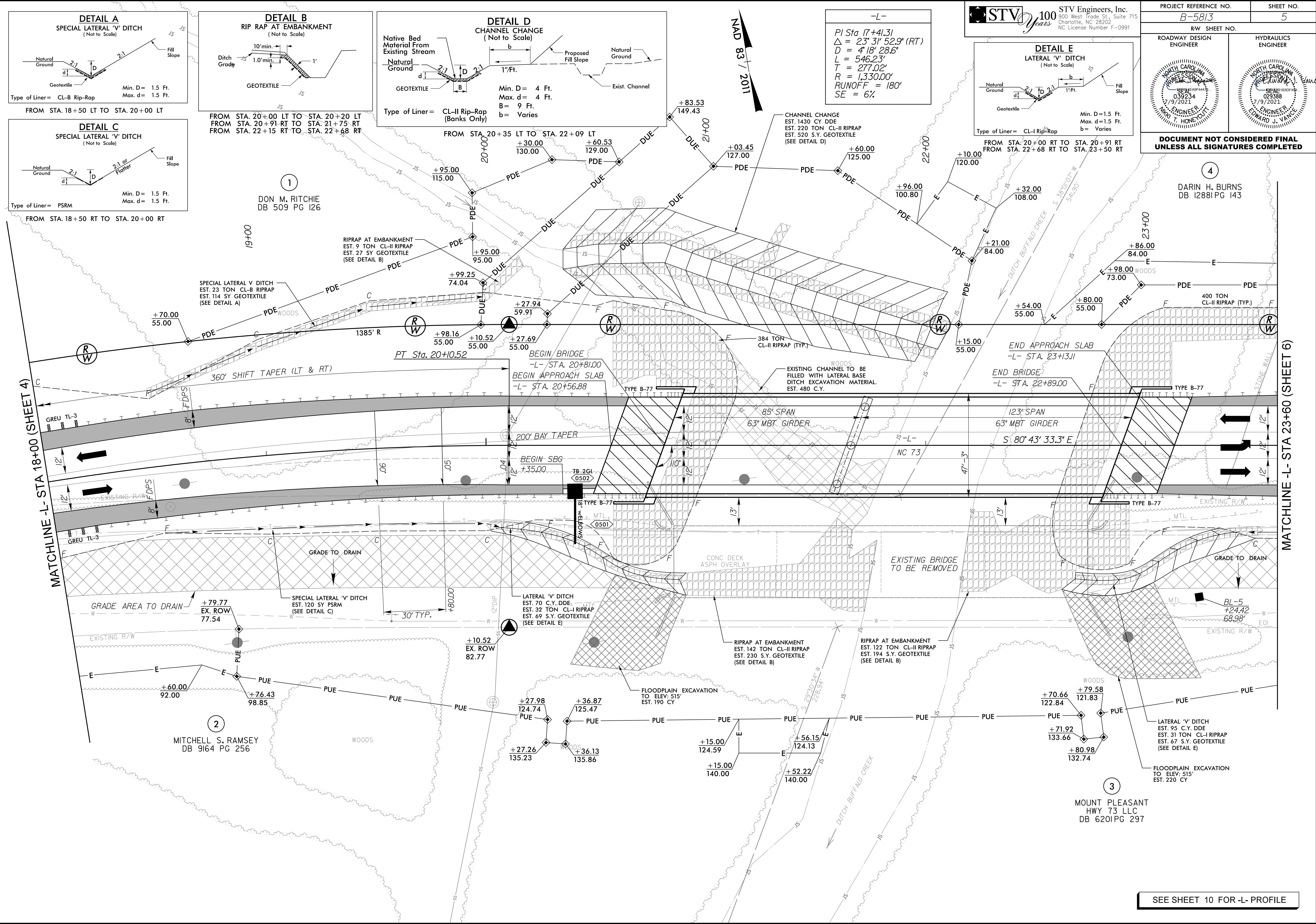


8/17/2021

7/9/2021
T:\Projects\2021\05\13\13-0513\13-0513.dwg



PROJECT REFERENCE NO. B-5813
SHEET NO. 5
RW SHEET NO. ROADWAY DESIGN ENGINEER HYDRAULICS ENGINEER
STV Engineers, Inc. 300 West Trade St., Suite 715 Charlotte, NC 28202 NC License Number F-0991
NORTH CAROLINA PROFESSIONAL ENGINEER EXPIRES 12/31/2021
T. HONEYCUTT
NORTH CAROLINA PROFESSIONAL ENGINEER EXPIRES 12/31/2021
EDWARD J. VANCE
DOCUMENT NOT CONSIDERED FINAL UNLESS ALL SIGNATURES COMPLETED

-L-
PI Sta 17+41.31
Δ = 23° 31' 52.9" (RT)
D = 4' 18" 28.6"
L = 546.23'
T = 277.02'
R = 1,330.00'
RUNOFF = 180'
SE = 6%

SEE SHEET 10 FOR -L- PROFILE