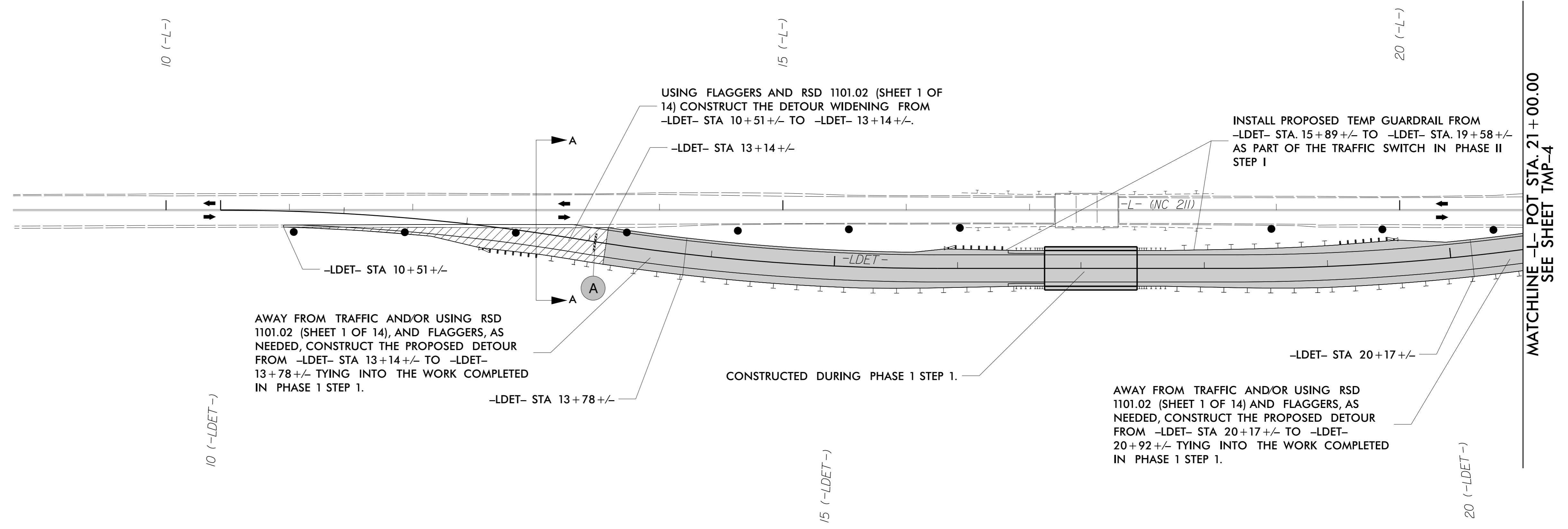
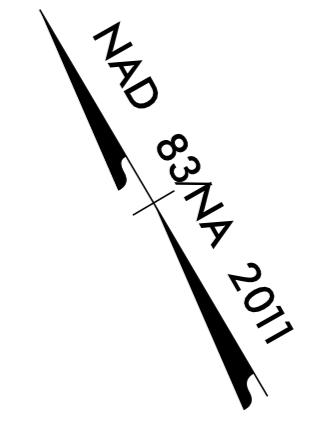
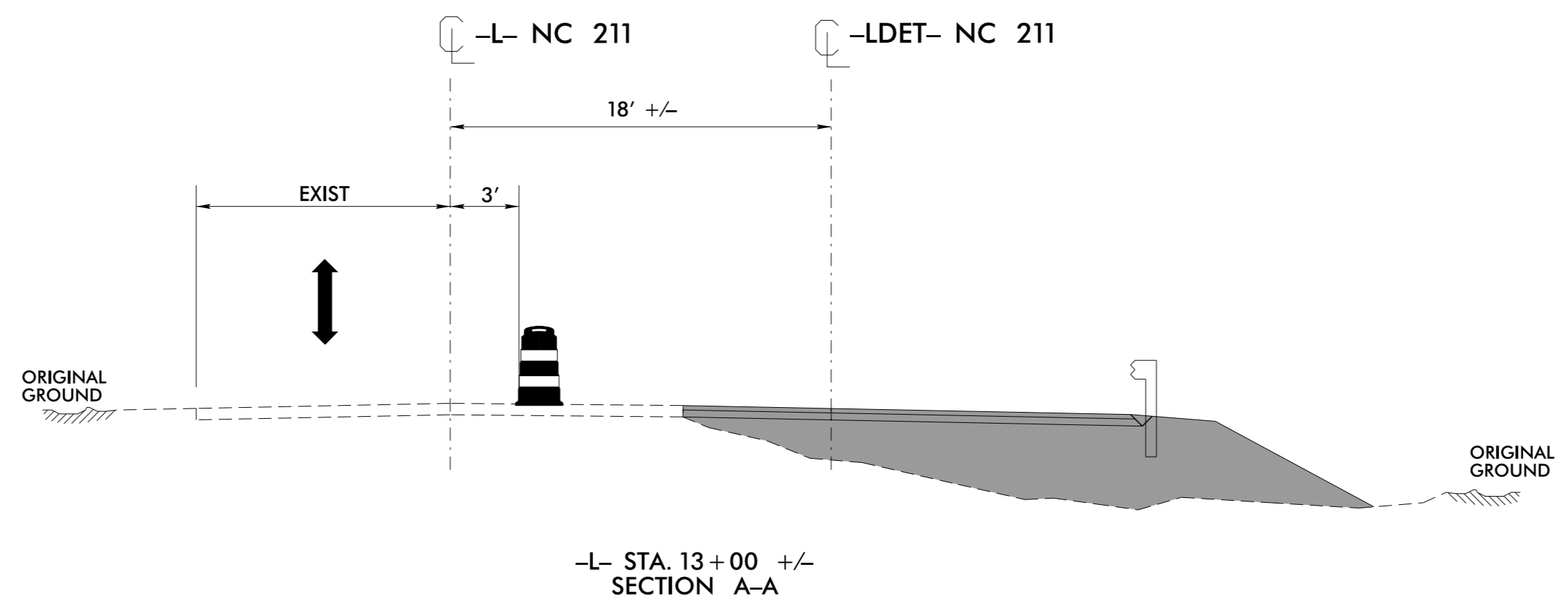
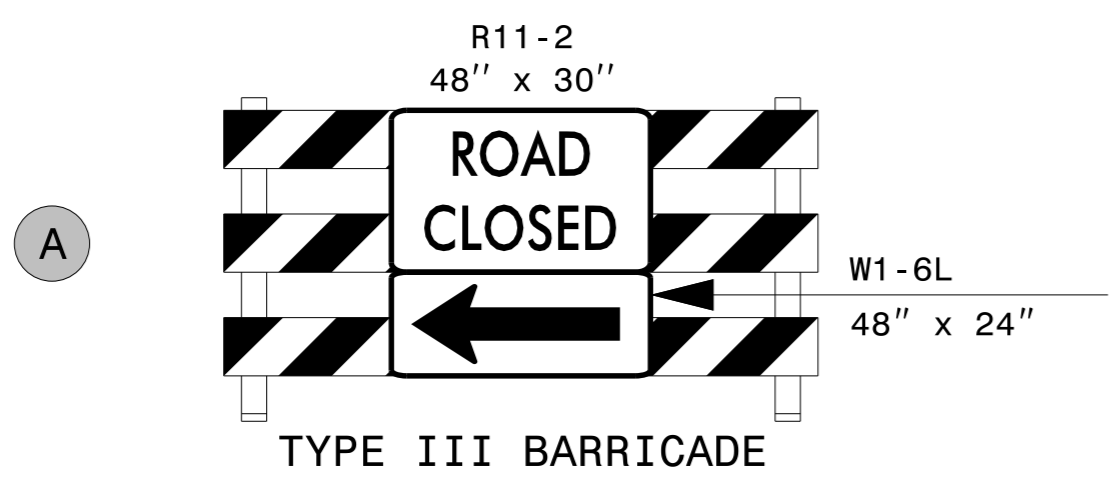


PROJ. REFERENCE NO.	SHEET NO.
B-5624	TMP-3



AWAY FROM TRAFFIC AND/OR USING RSD 1101.02 (SHEET 1 OF 14), AND FLAGGERS, AS NEEDED, CONSTRUCT THE PROPOSED DETOUR FROM -LDET- STA 13+14 +/- TO -LDET- 13+78 +/- TYING INTO THE WORK COMPLETED IN PHASE 1 STEP 1.

USING FLAGGERS AND RSD 1101.02 (SHEET 1 OF 14) CONSTRUCT THE DETOUR WIDENING FROM -LDET- STA 10+51 +/- TO -LDET- 13+14 +/-.

INSTALL PROPOSED TEMP GUARDRAIL FROM -LDET- STA. 15+89 +/- TO -LDET- STA. 19+58 +/- AS PART OF THE TRAFFIC SWITCH IN PHASE II STEP I

CONSTRUCTED DURING PHASE 1 STEP 1.

AWAY FROM TRAFFIC AND/OR USING RSD 1101.02 (SHEET 1 OF 14) AND FLAGGERS, AS NEEDED, CONSTRUCT THE PROPOSED DETOUR FROM -LDET- STA 20+17 +/- TO -LDET- 20+92 +/- TYING INTO THE WORK COMPLETED IN PHASE 1 STEP 1.

MATCHLINE -L- POT STA. 21+00.00
SEE SHEET TMP-4

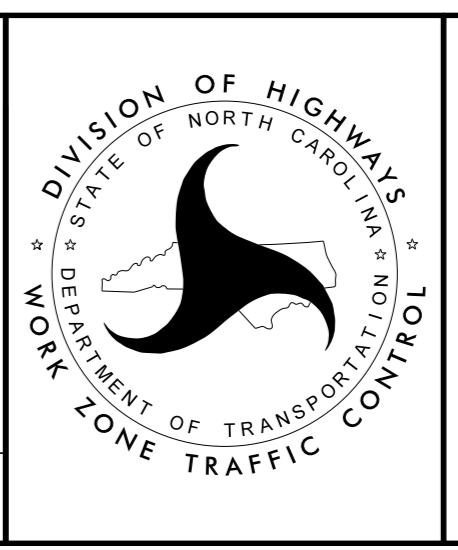
6/4/2021 pw:\cdmsmith-az02-pw.bentley.com:PW_PLN\Documents\17240\235233\10 Transportation\04 Client Folder Structure\B5624\TrafficControl\TCP\B5624_TC_TMP_03.dgn User:ICONRADAM

CDM Smith
CDM Smith Inc.
5400 Glenwood Avenue
Suite 400
Raleigh, NC 27612-3228
NC COA No. F-1255

APPROVED: *Adam M. Conrad, P.E., PMP*
DATE: 6/4/2021

SEAL
043767
ENGINEER
ADAM M. CONRAD

**DOCUMENT NOT CONSIDERED FINAL
UNLESS ALL SIGNATURES COMPLETED**



**TEMPORARY
TRAFFIC CONTROL
PHASE I DETAIL**