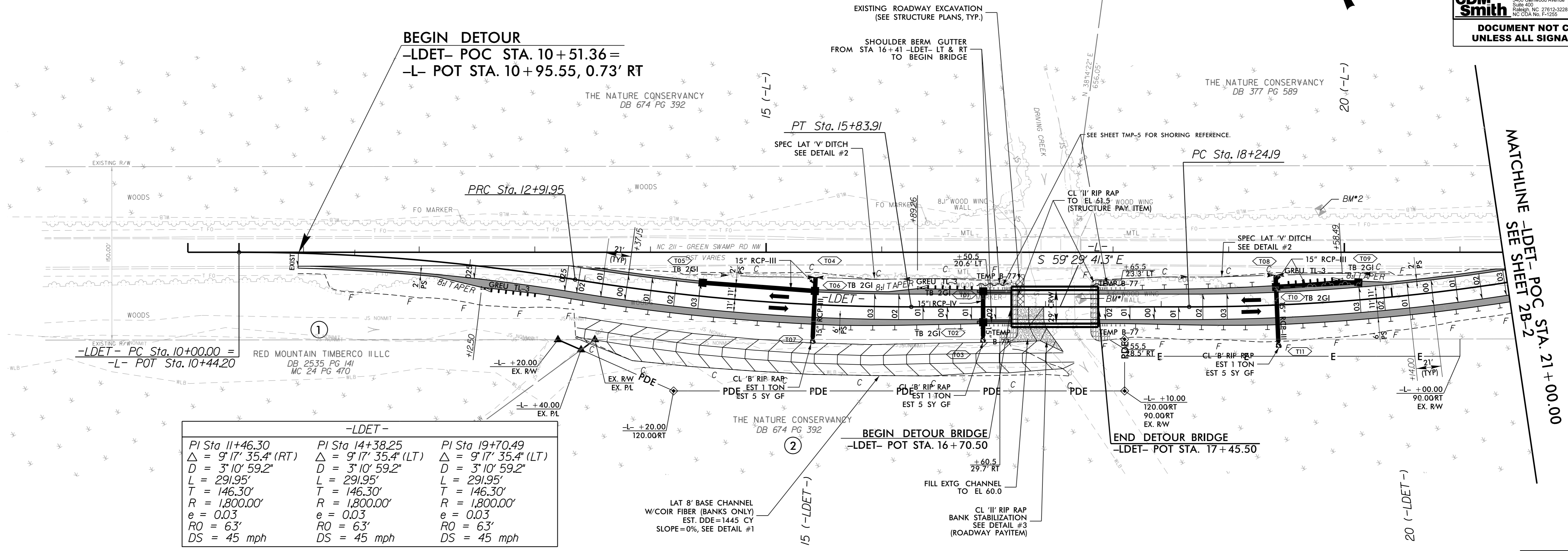
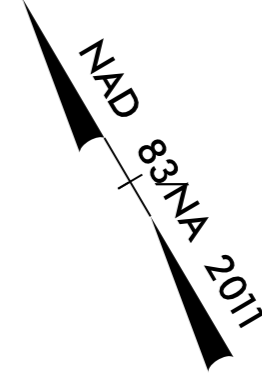
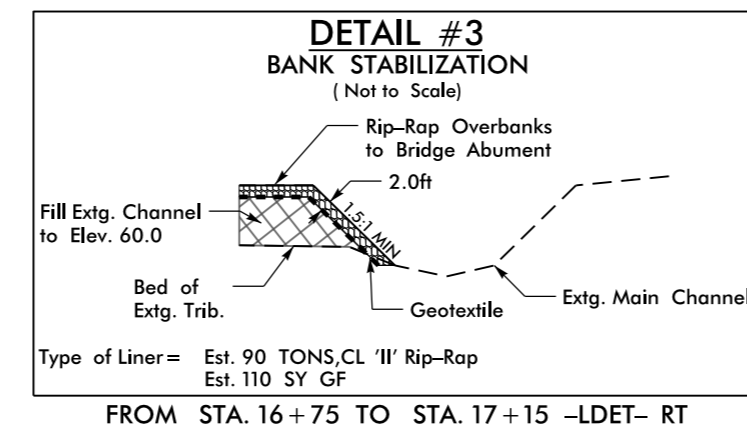
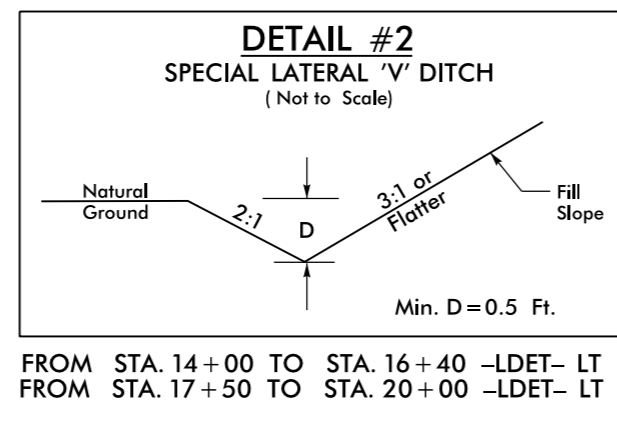
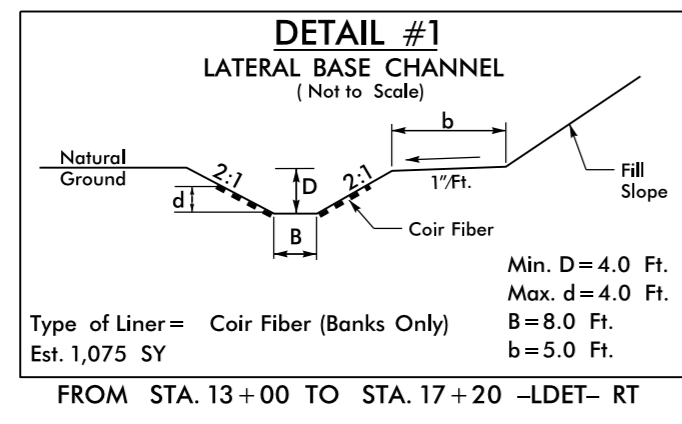
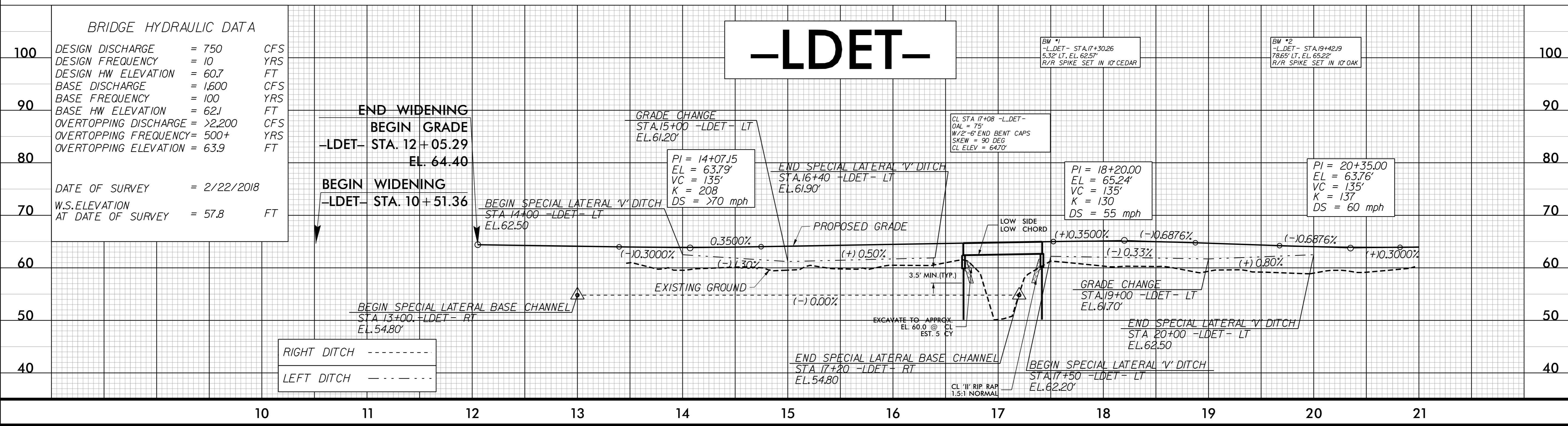


PROJECT REFERENCE NO. B-5624	SHEET NO. 2B-1
RW SHEET NO.	
ROADWAY DESIGN ENGINEER	HYDRAULICS ENGINEER
DOCUMENT NOT CONSIDERED FINAL UNLESS ALL SIGNATURES COMPLETED	



-LDET-		
PI Sta 11+46.30	PI Sta 14+38.25	PI Sta 19+70.49
$\Delta = 9'17'' 35.4'' (RT)$	$\Delta = 9'17'' 35.4'' (LT)$	$\Delta = 9'17'' 35.4'' (LT)$
D = 3'10' 59.2"	D = 3'10' 59.2"	D = 3'10' 59.2"
L = 291.95'	L = 291.95'	L = 291.95'
T = 146.30'	T = 146.30'	T = 146.30'
R = 1,800.00'	R = 1,800.00'	R = 1,800.00'
e = 0.03	e = 0.03	e = 0.03
RO = 63'	RO = 63'	RO = 63'
DS = 45 mph	DS = 45 mph	DS = 45 mph



REVISIONS

-SYSTIMEB6624_Pd1.psh_2B1.dgn
11/15/2018 10:00 AM

FOR -L- SEE SHEET NO. 4