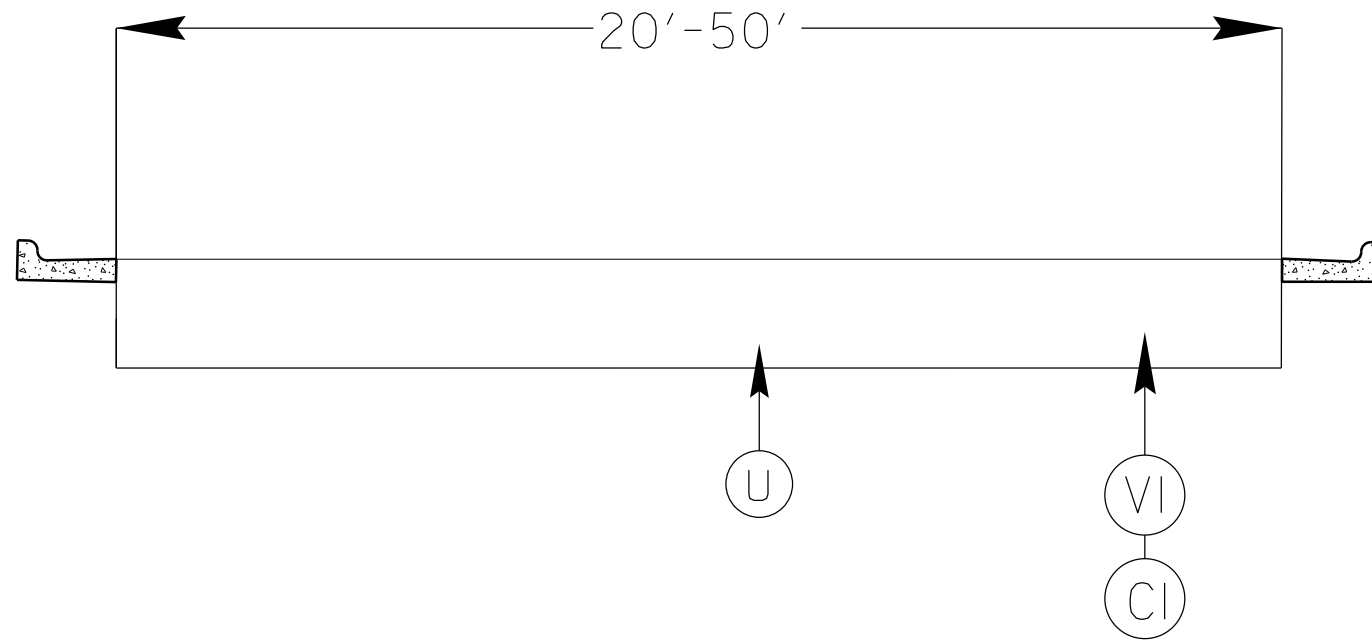


TYPICAL 1



SURFACING SCHEDULE

| ITEM NO | DESCRIPTION |
|---------|--|
| C1 | PROP. APPROX. 1 1/2" ASPHALT CONCRETE SURFACE COURSE, TYPE S9.5B AT AN AVERAGE RATE OF 165 LBS.PER.SQ.YD |
| C2 | PROP. APPROX. 1 1/4" ASPHALT CONCRETE SURFACE COURSE, TYPE S9.5B AT AN AVERAGE RATE OF 137.5 LBS.PER.SQ.YD |
| C3 | PROP. APPROX. 3/4" ASPHALT CONCRETE SURFACE COURSE, (LEVELING) TYPE S9.5B AT AN AVERAGE RATE OF 82.5 LBS.PER.SQ.YD |
| VI | MILLED ASPHALT PAVEMENT 1 1/2" IN DEPTH IN LOCATIONS AS DIRECTED BY PROJECT ENGINEER |
| T | SHOULDER RECONSTRUCTION |
| U | EXISTING ASPHALT |

TYPICAL 2

