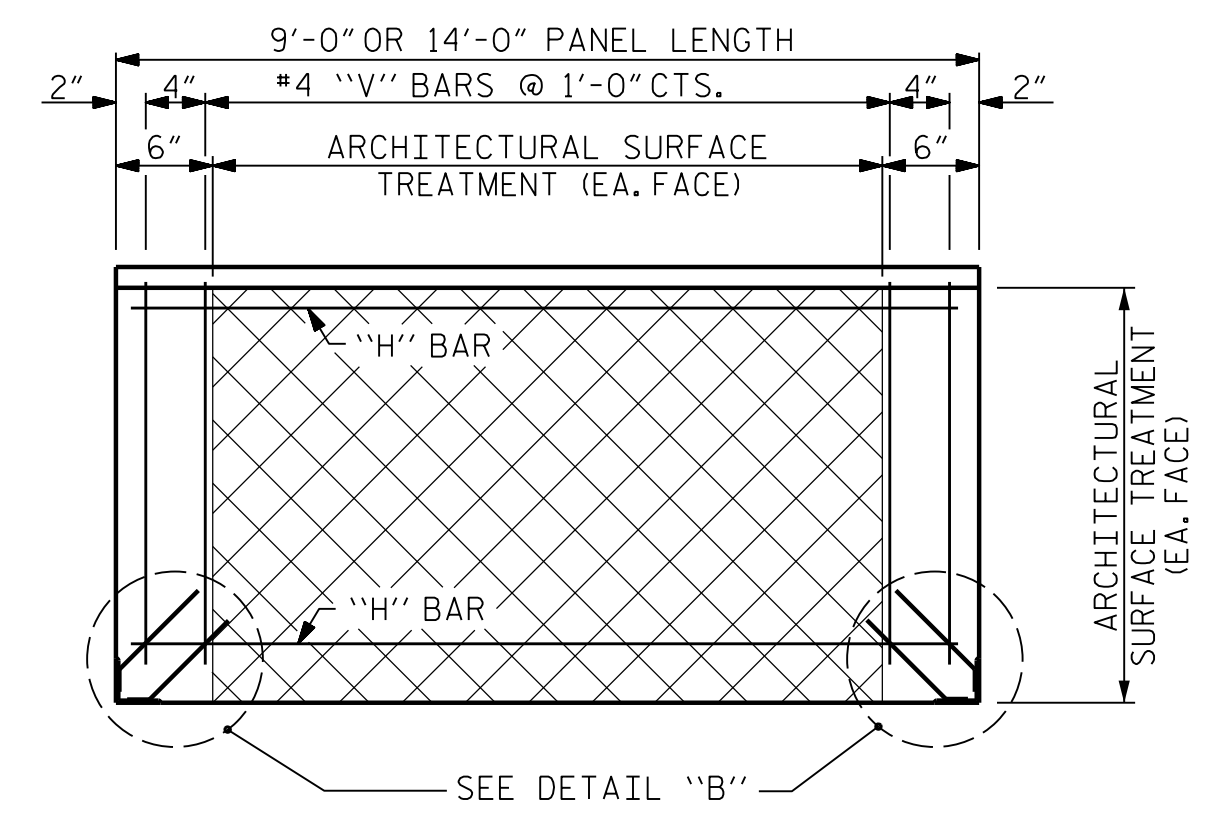


FRONT ELEVATION OF UPPER PRECAST PANEL



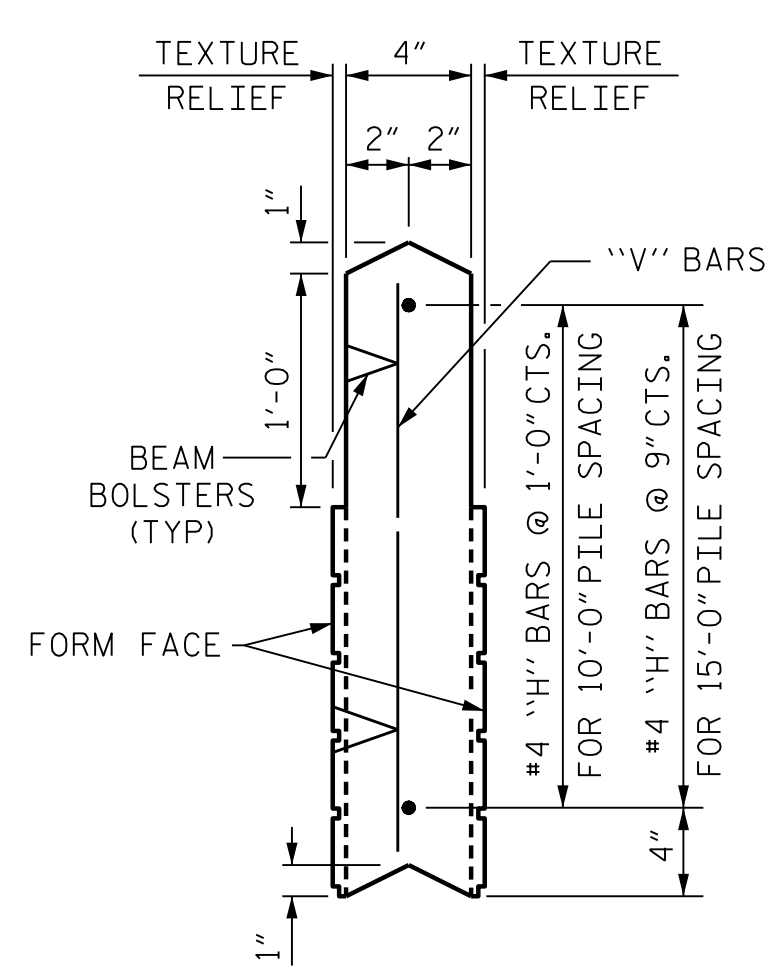
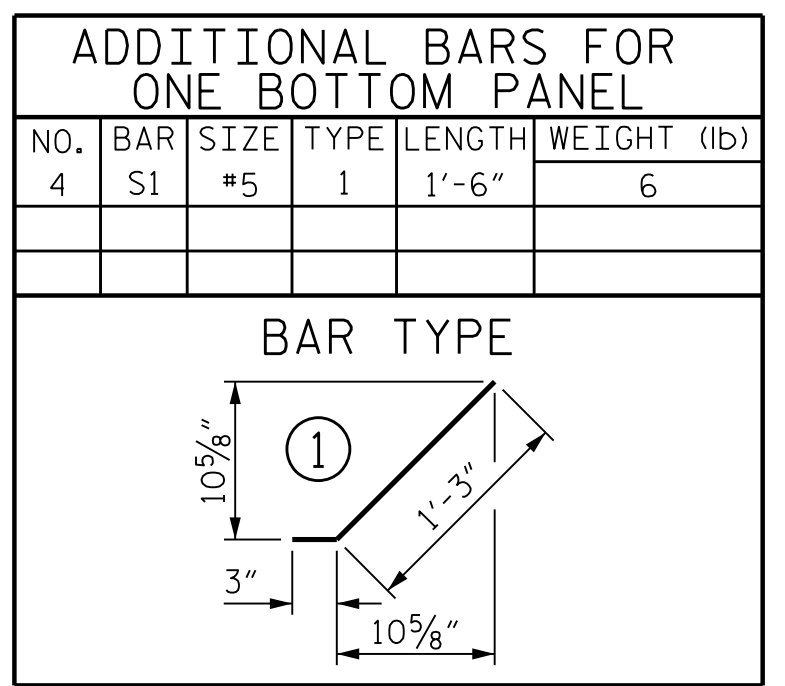
FRONT ELEVATION OF BOTTOM PRECAST PANEL

QUANTITIES FOR ONE PRECAST PANEL (FOR 10'-0" PILE SPACING)

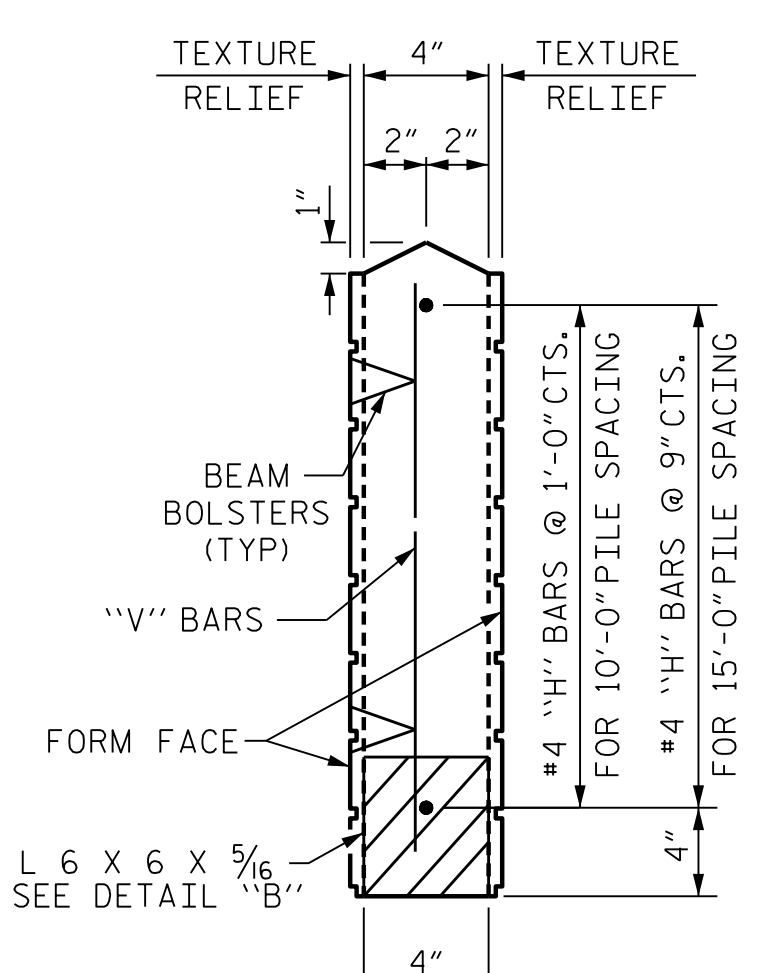
| PANEL HEIGHT | CLASS AA CONCRETE | C.Y. | BAR TYPES  |          |      |        |             |          |          |      |        |             |       |    |
|--------------|-------------------|------|------------|----------|------|--------|-------------|----------|----------|------|--------|-------------|-------|----|
|              |                   |      | HORIZONTAL |          |      |        |             | VERTICAL |          |      |        |             |       |    |
|              |                   |      | NO.        | BAR SIZE | TYPE | LENGTH | WEIGHT (lb) | NO.      | BAR SIZE | TYPE | LENGTH | WEIGHT (lb) |       |    |
| 2'-0"        |                   | 0.22 | 3          | H1       | #4   | STR    | 8'-8"       | 17       | 11       | V1   | #4     | STR         | 1'-8" | 12 |
| 3'-0"        |                   | 0.33 | 4          | H2       | #4   | STR    | 8'-8"       | 23       | 11       | V2   | #4     | STR         | 2'-8" | 20 |
| 4'-0"        |                   | 0.44 | 5          | H3       | #4   | STR    | 8'-8"       | 29       | 11       | V3   | #4     | STR         | 3'-8" | 27 |

QUANTITIES FOR ONE PRECAST PANEL (FOR 15'-0" PILE SPACING)

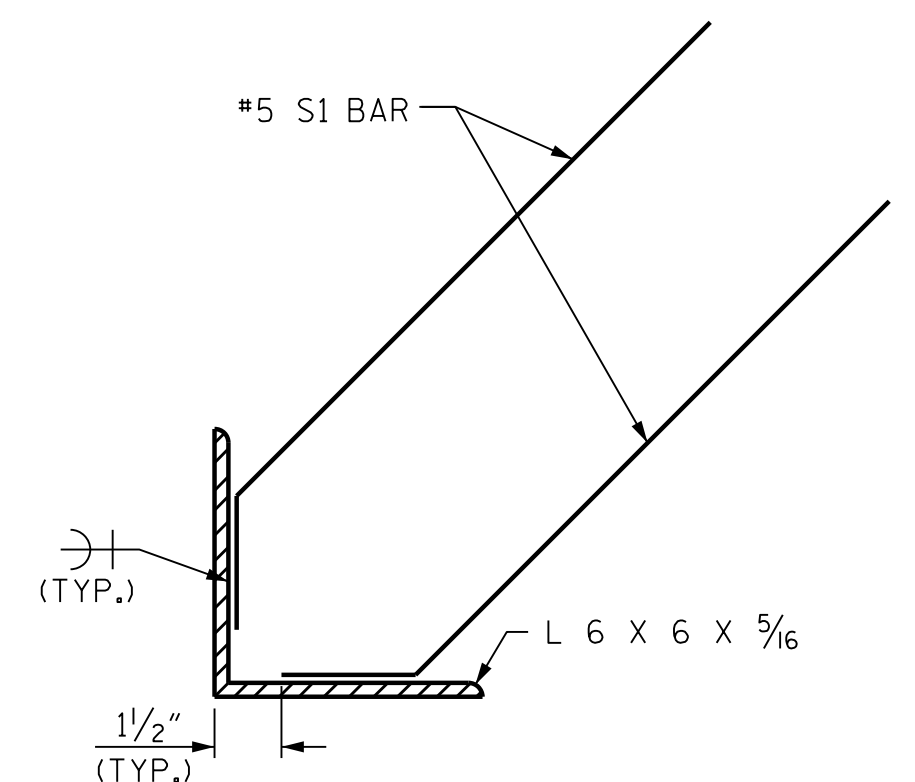
| PANEL HEIGHT | CLASS AA CONCRETE | C.Y. | BAR TYPES  |          |      |        |             |          |          |      |        |             |       |    |
|--------------|-------------------|------|------------|----------|------|--------|-------------|----------|----------|------|--------|-------------|-------|----|
|              |                   |      | HORIZONTAL |          |      |        |             | VERTICAL |          |      |        |             |       |    |
|              |                   |      | NO.        | BAR SIZE | TYPE | LENGTH | WEIGHT (lb) | NO.      | BAR SIZE | TYPE | LENGTH | WEIGHT (lb) |       |    |
| 3'-0"        |                   | 0.52 | 5          | H1       | #4   | STR    | 13'-8"      | 46       | 16       | V1   | #4     | STR         | 2'-8" | 29 |
| 4'-0"        |                   | 0.69 | 6          | H2       | #4   | STR    | 13'-8"      | 55       | 16       | V2   | #4     | STR         | 3'-8" | 39 |
| 5'-0"        |                   | 0.86 | 7          | H3       | #4   | STR    | 13'-8"      | 64       | 16       | V3   | #4     | STR         | 4'-8" | 50 |
| 6'-0"        |                   | 1.04 | 8          | H4       | #4   | STR    | 13'-8"      | 73       | 16       | V4   | #4     | STR         | 5'-8" | 61 |



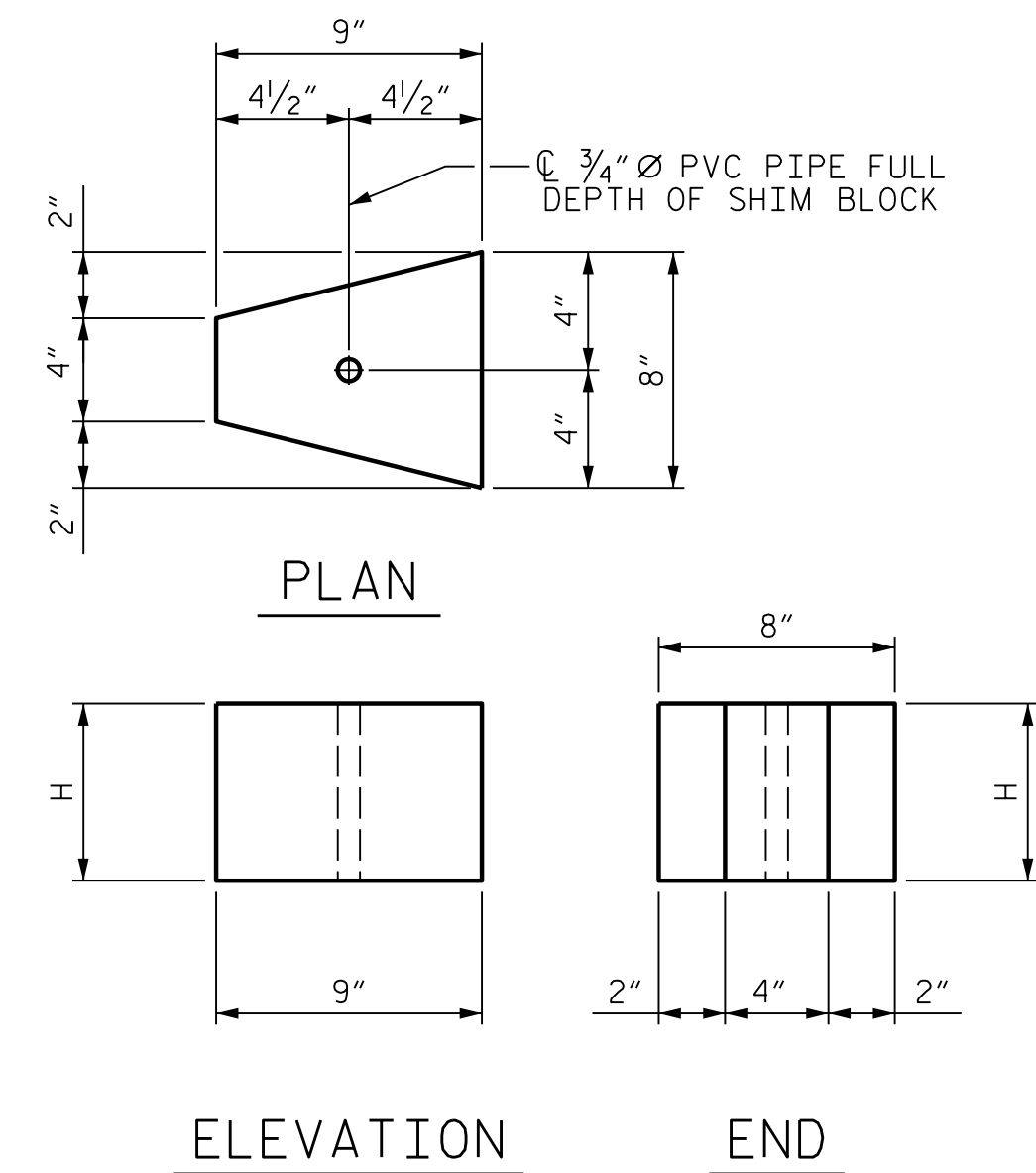
UPPER PANEL



BOTTOM PANEL

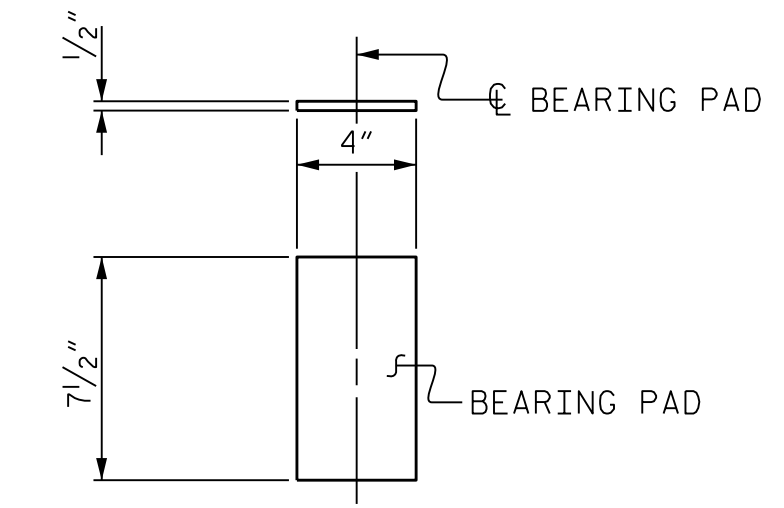


DETAIL "B"



CONCRETE SHIM BLOCK

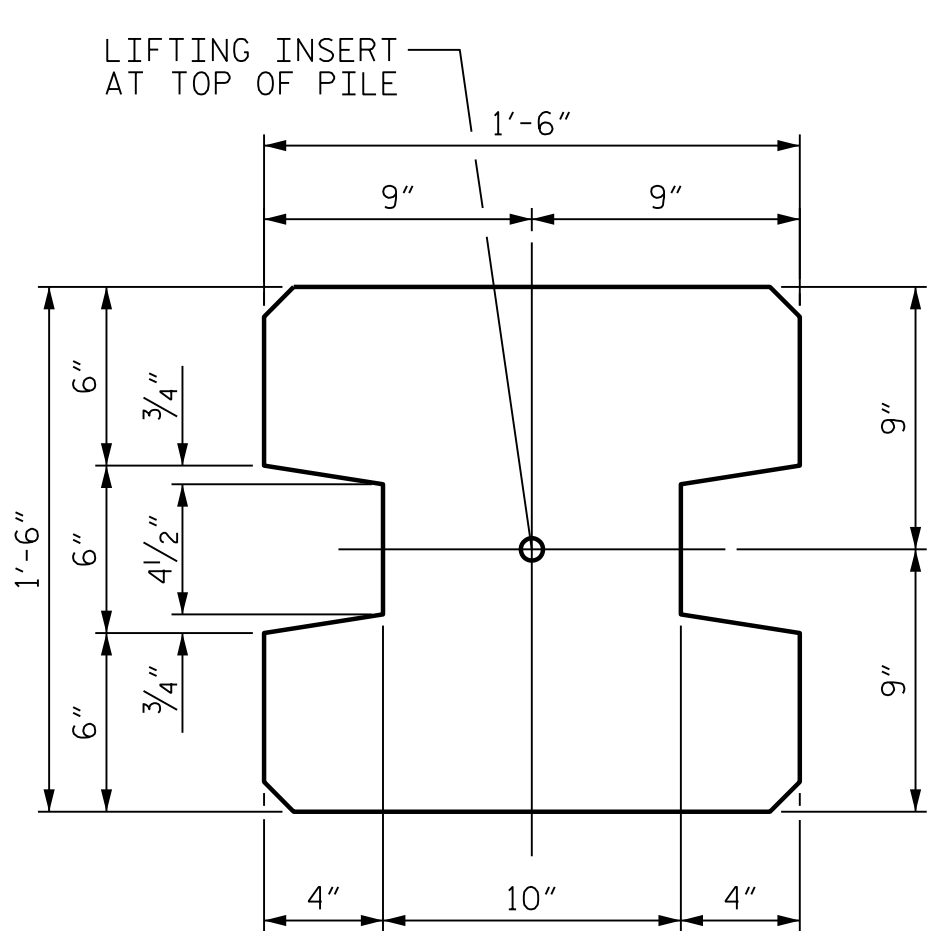
H = 3", 6" or 1'-0"



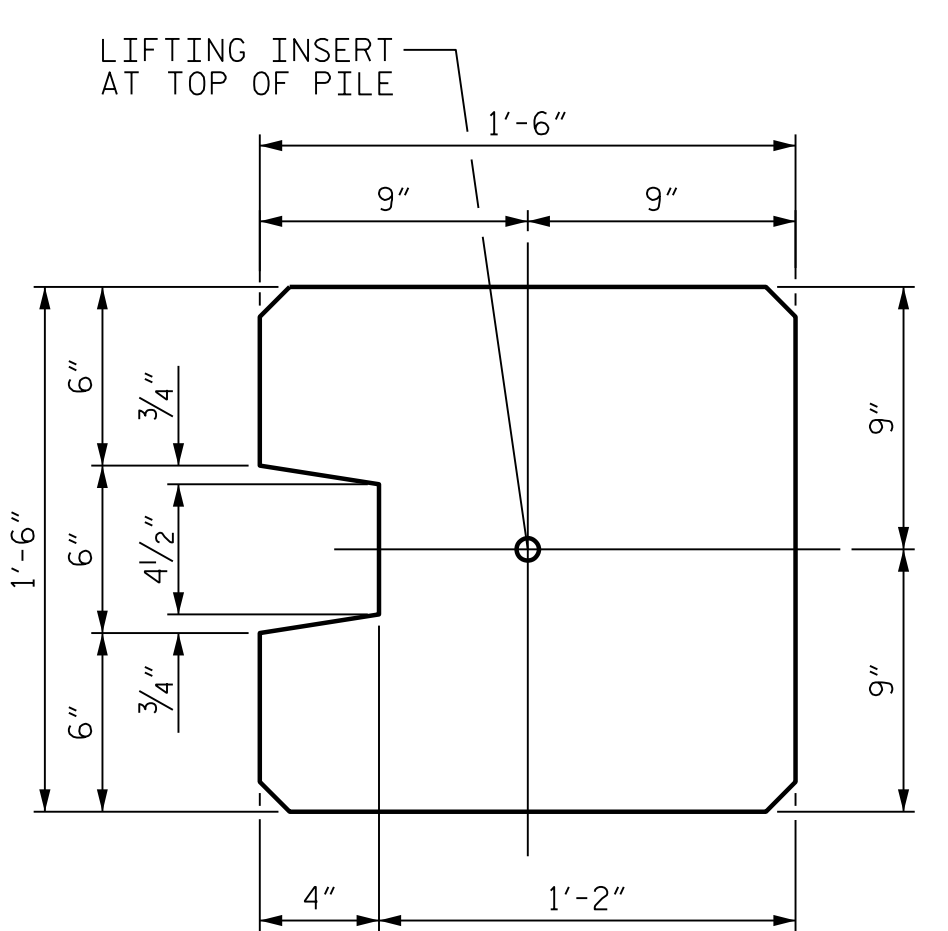
ELASTOMERIC BEARING DETAILS

ELASTOMER IN BEARINGS SHALL BE 50 DUROMETER HARDNESS.

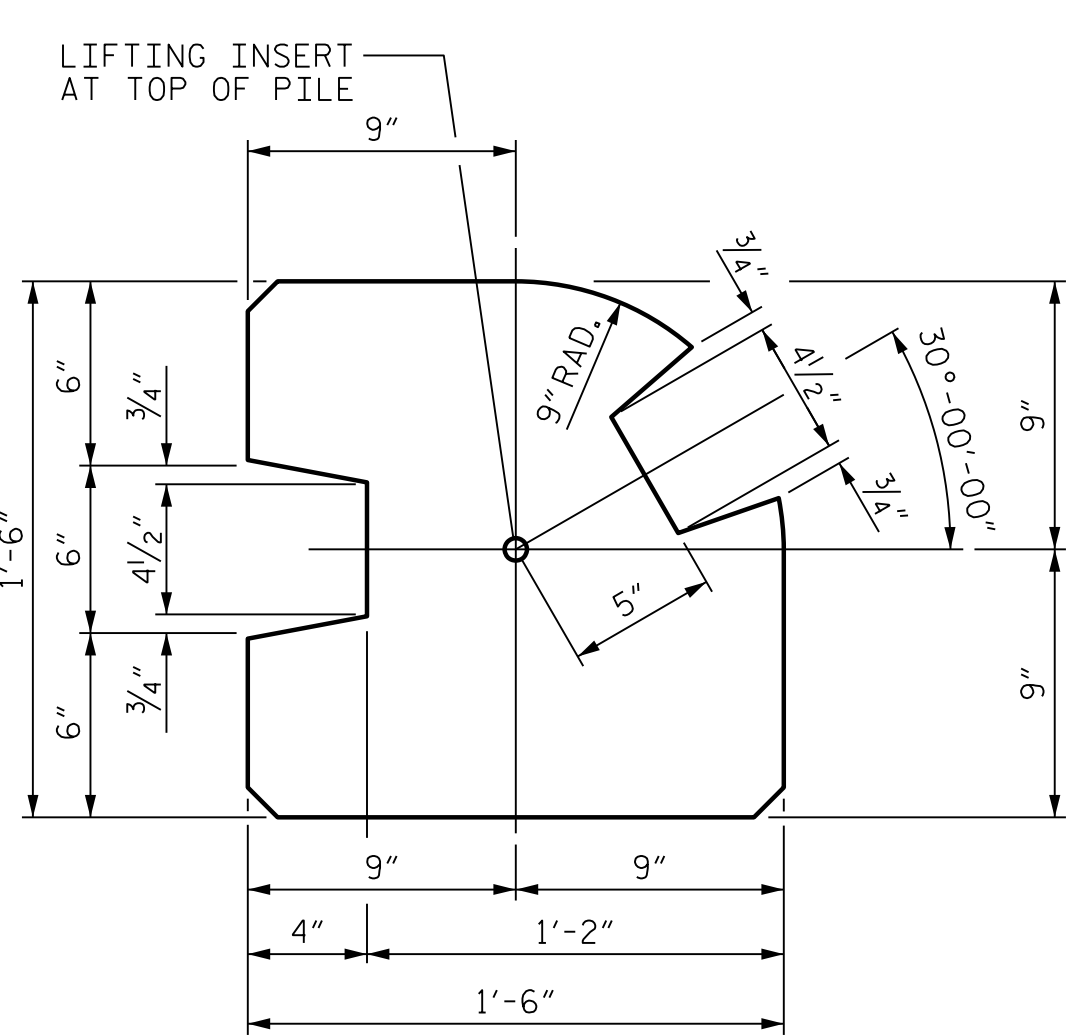
SECTION THROUGH PRECAST PANELS



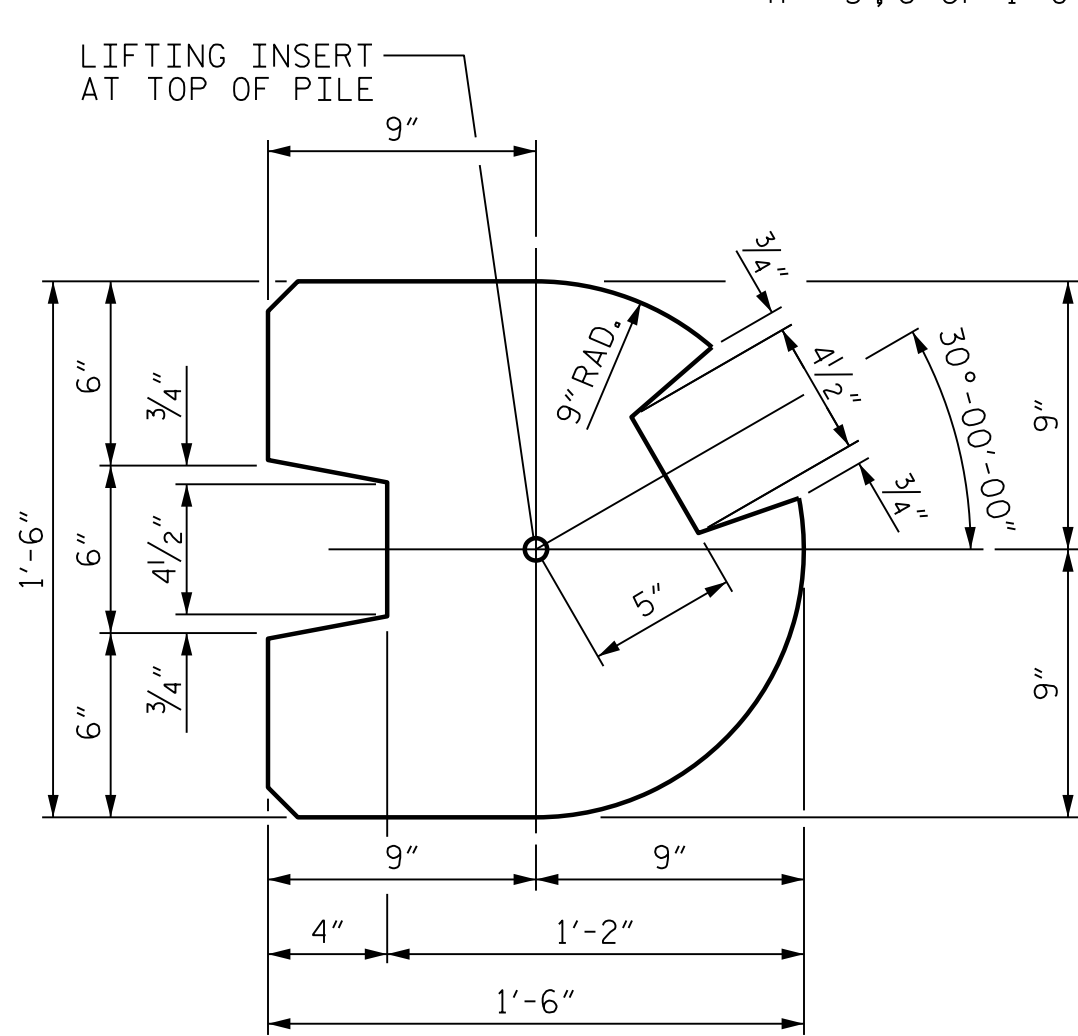
TYPE - I  
(AREA = 1.9444 SQ. FT.)



TYPE - II  
(AREA = 2.0903 SQ. FT.)



TYPE - III  
(AREA = 1.8336 SQ. FT.)



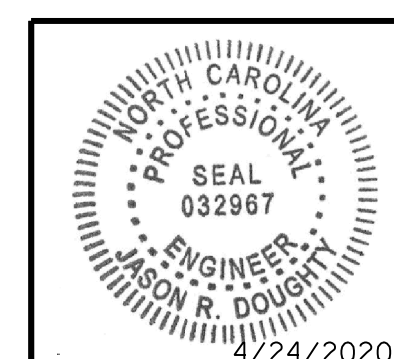
TYPE - III (ALT.)  
(AREA = 1.7163 SQ. FT.)

PILE DETAIL

(ALL CORNERS TO BE CHAMFERED 1")

PROJECT NO. R-2233BB  
RUTHERFORD COUNTY  
STATION: VARIES

SHEET 7 OF 8



STATE OF NORTH CAROLINA  
DEPARTMENT OF TRANSPORTATION  
RALEIGH  
STANDARD  
SOUND BARRIER WALL  
DETAILS

| REVISIONS |     |       |     |     |       | SHEET NO.    |
|-----------|-----|-------|-----|-----|-------|--------------|
| NO.       | BY: | DATE: | NO. | BY: | DATE: | SW-7         |
| 1         |     |       | 3   |     |       | TOTAL SHEETS |
| 2         |     |       | 4   |     |       | 8            |



333 FAYETTEVILLE STREET, SUITE 500  
RALEIGH, NC 27601  
NC LICENSE NO. C-2979

DOCUMENT NOT CONSIDERED FINAL  
UNLESS ALL SIGNATURES COMPLETED

STD. NO. SBW2

4/24/2020 420-113-R2233BB-SMU-WD1.dgn

DESIGNED BY: C. CORMAN DATE: APR 2020  
DRAWN BY: K. WHITE DATE: APR 2020  
CHECKED BY: M. NIFONG DATE: APR 2020  
DESIGN ENGINEER OF RECORD: J. DOUGHTY DATE: APR 2020

DRAWN BY: MAA 6/11  
CHECKED BY: GM 6/11  
REV. 1/15/14 RWW/TMG  
REV. 10/17 MAA/THC  
REV. 5/18 MAA/THC