

ELEVATION

SECTION A-A

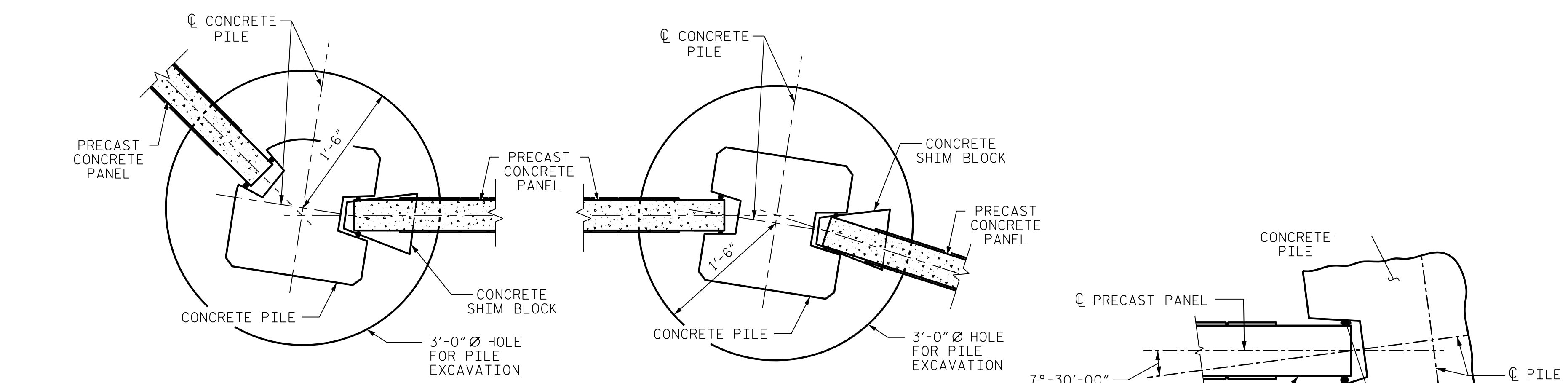
PILE EXCAVATION DEPTHS "D"				
WALL -NW5A-		FROM : STA. 10+00.00 -NW5A-	TO : STA. 19+00.00 -NW5A-	
3'-0" Ø HOLE	PILE SPACING	WALL HEIGHT		
		H ≤ 15'	15' < H ≤ 20'	20' < H ≤ 25'
	15'-0"	11'-0"	13'-0"	16'-0"

THE STANDARD SOUND BARRIER WALL FOUNDATION TABLES ARE BASED ON 36" DIA. HOLES. FOR 30" DIA. HOLES, ADD 1 FT TO PILE EXCAVATION DEPTHS (D).

NOTES

- FOR SOUND BARRIER WALL, SEE SPECIAL PROVISIONS.
- CONSTRUCT SOUND BARRIER WALL TO LINES AND GRADES SHOWN ON THE ROADWAY PLANS.
- PROVIDE PANELS WITH A FLAT BOTTOM.
- VERIFY THE LOCATION OF UNDERGROUND UTILITIES BEFORE DRILLING HOLES TO ENSURE SUFFICIENT CLEARANCE IS AVAILABLE.
- ADJUST PILE EXCAVATION ELEVATIONS TO MAINTAIN 6" MINIMUM EMBEDMENT OF THE BOTTOM PANEL.
- USE CLASS AA FOR PANELS AND CLASS A CONCRETE PILE EXCAVATION BACKFILL, IN ACCORDANCE WITH ARTICLE 1000-4 OF THE STANDARD SPECIFICATIONS.
- AT THE CONTRACTOR'S OPTION, USE 10'-0", 15'-0", OR 20'-0" PILE SPACINGS. STANDARD PRECAST CONCRETE PANELS MAY BE USED WITH THE 10'-0" AND 15'-0" PILE SPACING. FOR 20'-0" PILE SPACING, PANELS DESIGNED AND MANUFACTURED BY A THIRD PARTY VENDOR SHALL BE USED.
- FOR SOUND BARRIER WALL STATIONS, OFFSETS, AND WALL ENVELOPE, SEE ROADWAY PLANS.
- PLACE 1" Ø BACKER RODS FULL HEIGHT ON EACH SIDE OF THE PRECAST PANELS. SET AND SEAL THE BACKER ROD IN PLACE WITH SEALANT THAT CONFORMS WITH ARTICLE 1028-3 OF THE STANDARD SPECIFICATIONS.
- FOR SUBMITTAL OF WORKING DRAWINGS, SEE SPECIAL PROVISIONS.
- FOR FALSEWORK AND FORMWORK, SEE SPECIAL PROVISIONS.

PILE REINFORCING STEEL DESIGN WIND PRESSURE = 40 PSF							
PILE TYPE I				PILE TYPE III			
PILE SPACING	MAXIMUM WALL HEIGHT (H)	VERTICAL REINFORCING STEEL	TIES	PILE SPACING	MAXIMUM WALL HEIGHT (H)	VERTICAL REINFORCING STEEL	TIES
15'-0"	H ≤ 20'	4 - #8 EA. FACE	#3 @ 1'-4" CTS.	15'-0"	H ≤ 20'	3 - #9 SHORT FACE 4 - #9 LONG FACE	#3 @ 1'-4" CTS.
	20' < H ≤ 25'	4 - #10 EA. FACE	#3 @ 1'-4" CTS.		20' < H ≤ 25'	3 - #11 SHORT FACE 4 - #11 LONG FACE	#3 @ 1'-4" CTS.
PILE TYPE II				PILE TYPE III ALT.			
PILE SPACING	MAXIMUM WALL HEIGHT (H)	VERTICAL REINFORCING STEEL	TIES	PILE SPACING	MAXIMUM WALL HEIGHT (H)	VERTICAL REINFORCING STEEL	TIES
15'-0"	H ≤ 20'	4 - #6 EA. FACE	#3 @ 1'-4" CTS.	15'-0"	H ≤ 20'	3 - #9 SHORT FACE 4 - #9 LONG FACE	#3 @ 1'-4" CTS.
	20' < H ≤ 25'	4 - #7 EA. FACE	#3 @ 1'-4" CTS.		20' < H ≤ 25'	3 - #11 SHORT FACE 4 - #11 LONG FACE	#3 @ 1'-4" CTS.



TYPICAL WALL TURN DETAILS

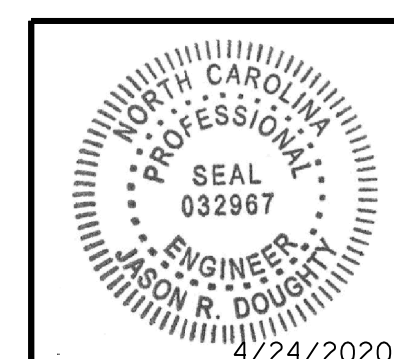
PILE ROTATION LIMIT FOR WALL TURN

(ROTATE THE CONCRETE PILE ±7°-30'-00" TO ACCOMMODATE WALL TURN.)

BILL OF MATERIAL	
SOUND BARRIER WALL	14,210 S.F.
ARCHITECTURAL SURFACE TREATMENT	23,036 S.F.
QUANTITIES PROVIDED ARE APPROXIMATE AND ARE FOR BID PURPOSES ONLY.	
ARCHITECTURAL SURFACE TREATMENT	
TEXTURE OPTION:	DRY STACK STONE FORMLINER
STAIN OPTION:	DARK GRAY (FS 26008)

PROJECT NO. R-2233BB
RUTHERFORD COUNTY
 STATION: 793+98.23 -L3- =
10+00 -NW5A-
 SHEET 1 OF 8

STATE OF NORTH CAROLINA
 DEPARTMENT OF TRANSPORTATION
 RALEIGH
 STANDARD
 SOUND BARRIER WALL
 No. -NW5A-



333 FAYETTEVILLE STREET, SUITE 500
 RALEIGH, NC 27601
 NC LICENSE NO. C-2979

**DOCUMENT NOT CONSIDERED FINAL
 UNLESS ALL SIGNATURES COMPLETED**

REVISIONS						SHEET NO.
NO.	BY:	DATE:	NO.	BY:	DATE:	SW-1
1			3			TOTAL SHEETS 8
2			4			

DESIGNED BY: C. CORMAN	DATE: APR 2020	DRAWN BY: MAA 6/11	REV. 9/26/14	MAA/TMG
DRAWN BY: K. WHITE	DATE: APR 2020	CHECKED BY: GM 6/11	REV. 10/17	MAA/THC
CHECKED BY: M. NIFONG	DATE: APR 2020	DESIGN ENGINEER	REV. 5/18	MAA/THC
DESIGN ENGINEER		DATE: APR 2020		
OF RECORD: J. DOUGHTY				

4/24/2020 420.001.R2233BB.SWL.NW5A.dgn