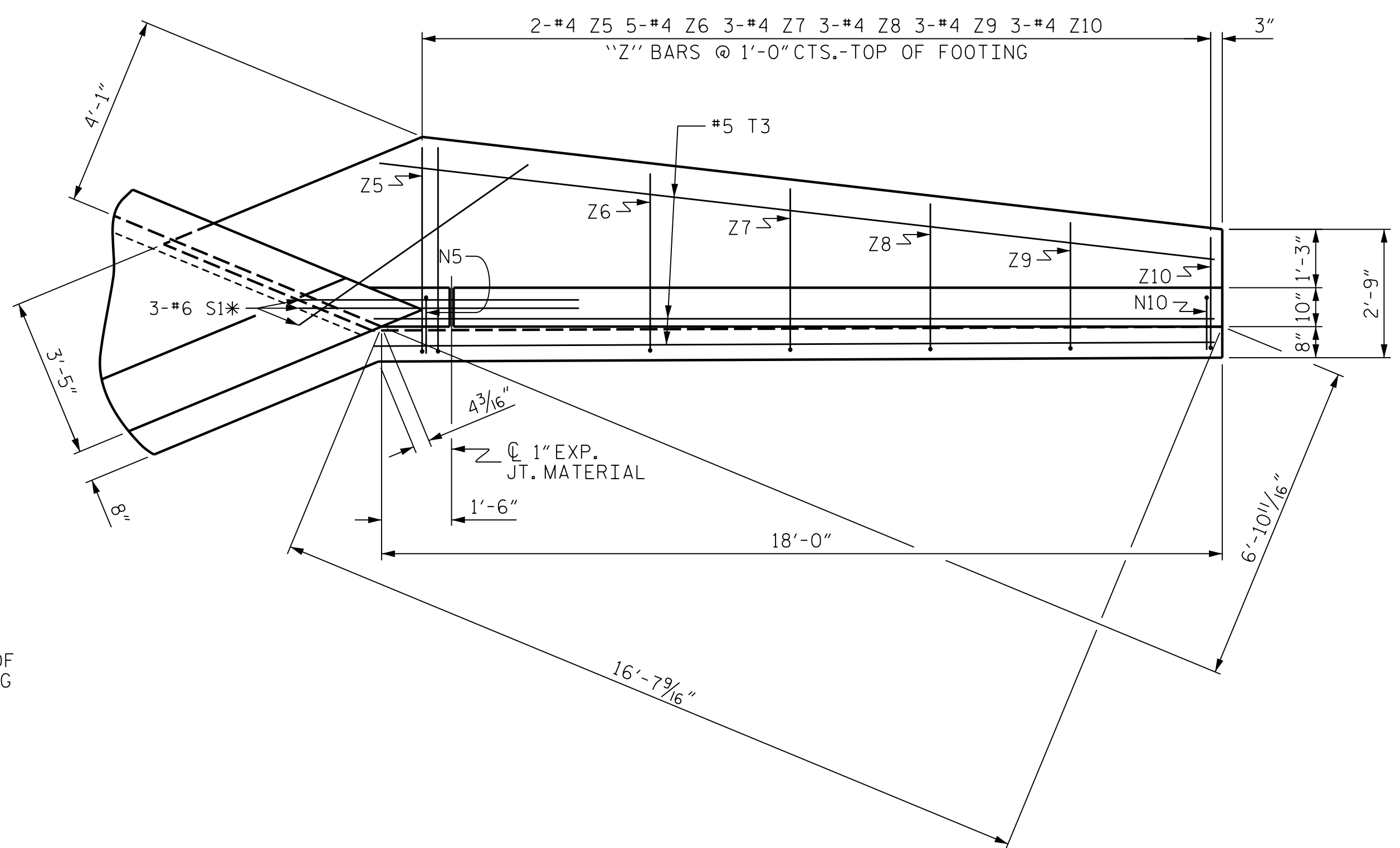
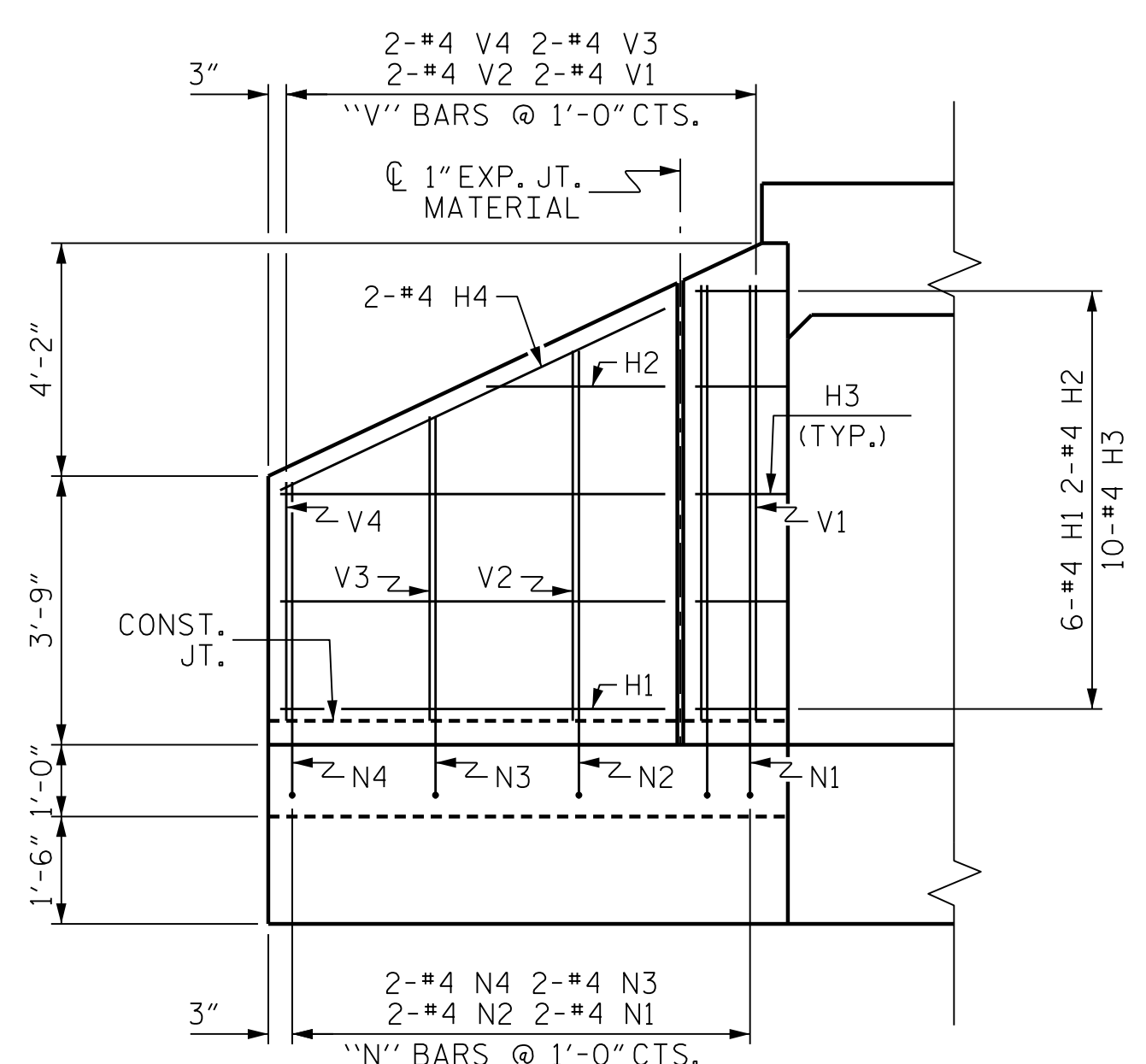


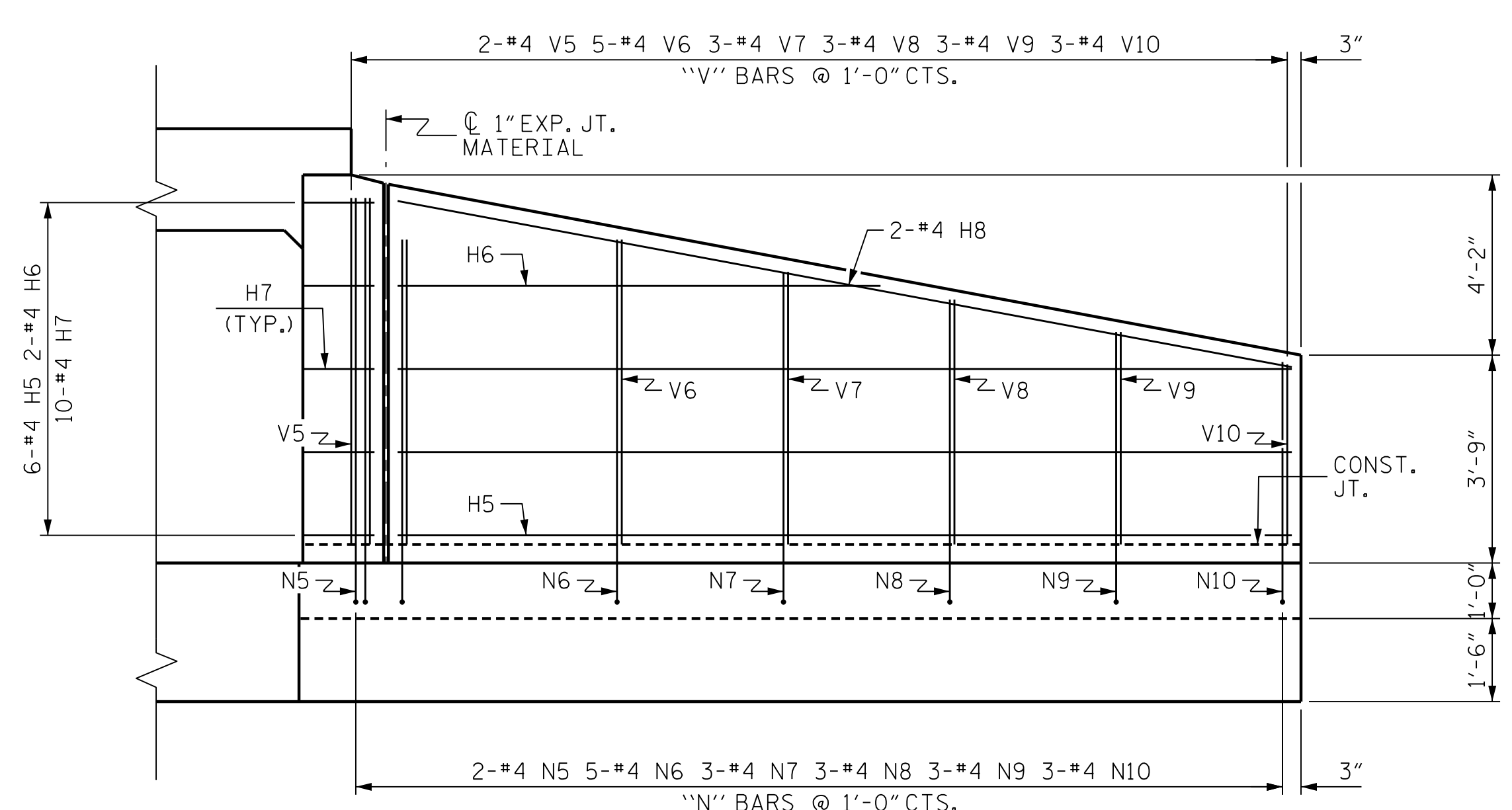
PLAN W2



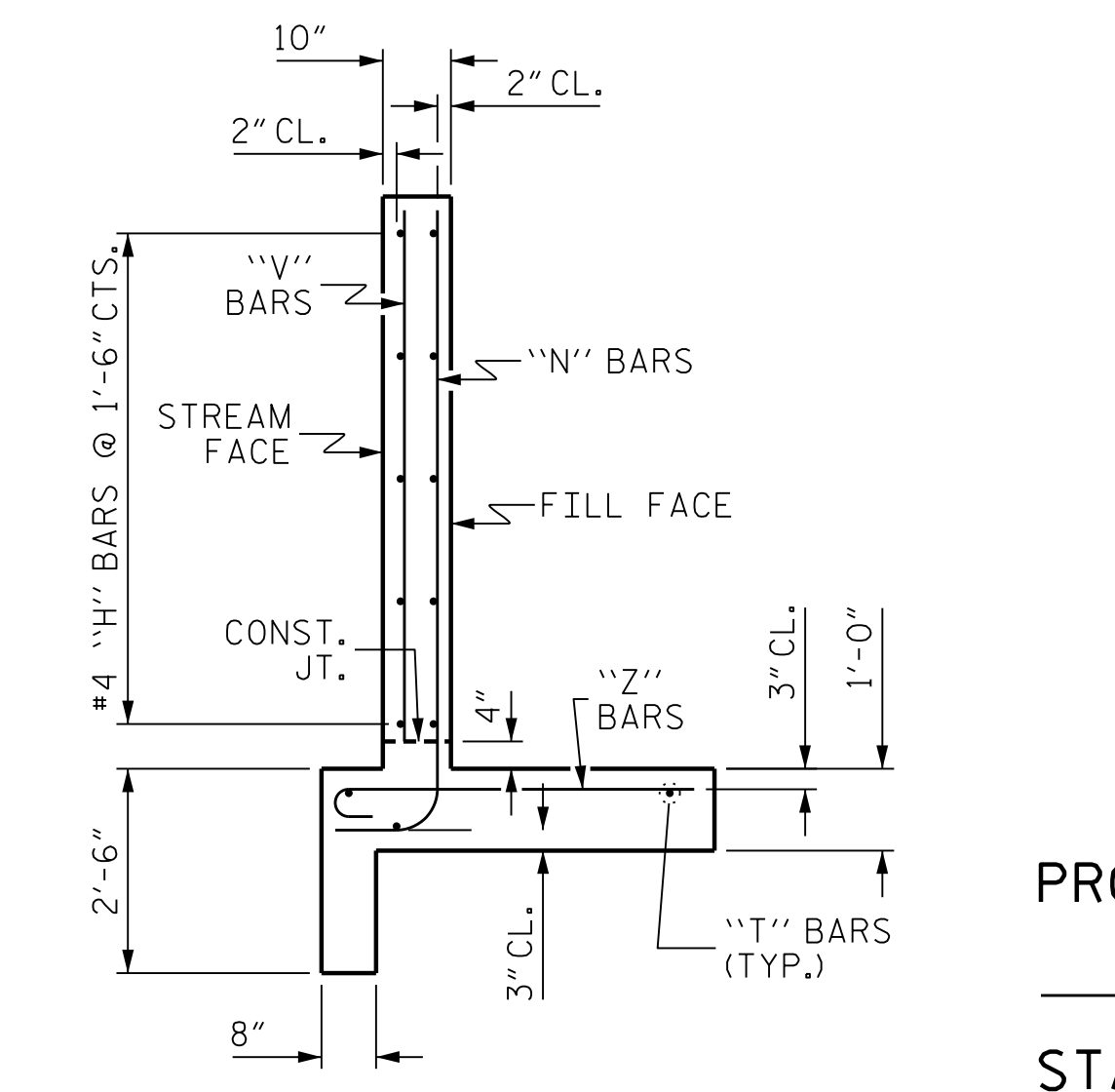
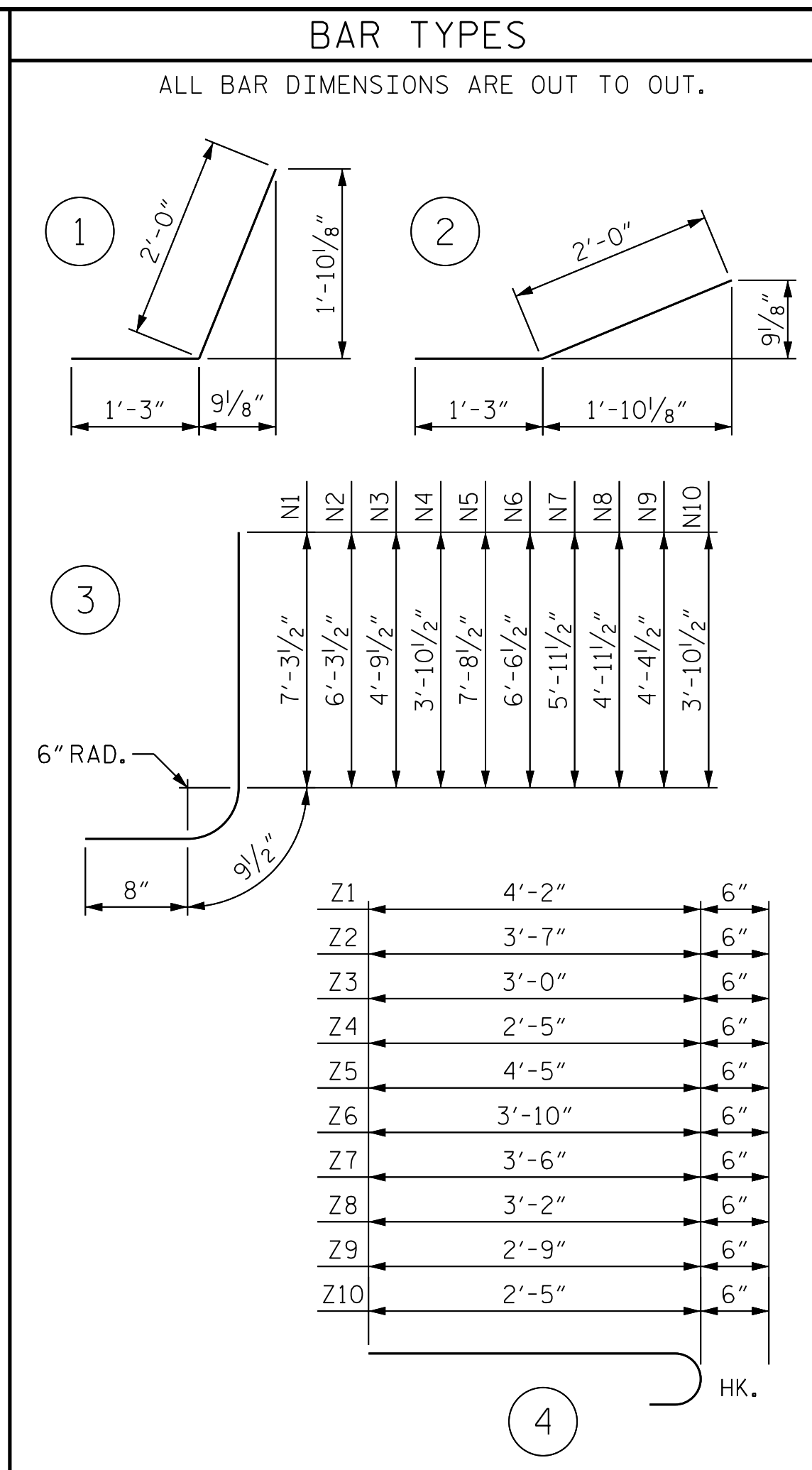
PLAN W1



ELEVATION W2



ELEVATION W1



TYPICAL WING SECTION

BILL OF MATERIAL					
BAR	NO.	SIZE	TYPE	LENGTH	WEIGHT
H1	12	#4	STR	5'-4"	43
H2	4	#4	STR	2'-6"	7
H3	20	#4	1	3'-3"	43
H4	4	#4	STR	5'-11"	16
H5	12	#4	STR	16'-1"	129
H6	4	#4	STR	8'-8"	23
H7	20	#4	2	3'-3"	43
H8	4	#4	STR	16'-4"	44
N1	4	#4	3	8'-9"	23
N2	4	#4	3	7'-9"	21
N3	4	#4	3	6'-3"	17
N4	4	#4	3	5'-4"	14
N5	4	#4	3	9'-2"	24
N6	10	#4	3	8'-0"	53
N7	6	#4	3	7'-5"	30
N8	6	#4	3	6'-5"	26
N9	6	#4	3	5'-10"	23
N10	6	#4	3	5'-4"	21
S1	12	#6	STR	6'-0"	108
T1	4	#5	STR	7'-3"	30
T2	2	#5	STR	8'-0"	17
T3	6	#5	STR	18'-0"	113
V1	4	#4	STR	6'-9"	18
V2	4	#4	STR	5'-8"	15
V3	4	#4	STR	4'-3"	11
V4	4	#4	STR	3'-4"	9
V5	4	#4	STR	7'-1"	19
V6	10	#4	STR	6'-0"	40
V7	6	#4	STR	5'-4"	21
V8	6	#4	STR	4'-5"	18
V9	6	#4	STR	3'-10"	15
V10	6	#4	STR	3'-3"	13
Z1	4	#4	4	4'-8"	12
Z2	4	#4	4	4'-1"	11
Z3	4	#4	4	3'-6"	9
Z4	4	#4	4	2'-11"	8
Z5	4	#4	4	4'-11"	13
Z6	10	#4	4	4'-4"	29
Z7	6	#4	4	4'-0"	16
Z8	6	#4	4	3'-8"	15
Z9	6	#4	4	3'-3"	13
Z10	6	#4	4	2'-11"	12
REINFORCING STEEL				1185	LBS
FOR 4 WINGS					
CLASS A CONCRETE					
4 WINGS				18.5	CY
2 HEADWALLS				1.4	CY
2 END CURTAIN WALLS				1.3	CY
TOTAL				21.2	CY

PROJECT NO. R-2233BB
RUTHERFORD COUNTY
 STATION: 830+02.00 -L3-

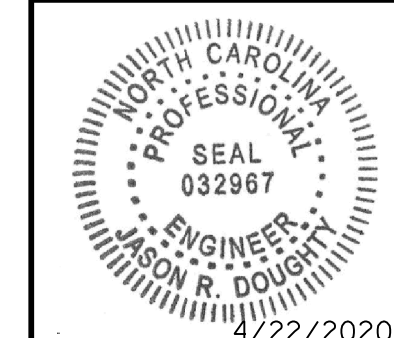
SHEET 4 OF 5

STATE OF NORTH CAROLINA
 DEPARTMENT OF TRANSPORTATION
 RALEIGH
STANDARD WINGS
 FOR
CONCRETE BOX CULVERT
 H = 6'-0" SLOPE = 2:1
 45° SKEW

REVISIONS					
NO.	BY:	DATE:	NO.	BY:	DATE:
1			3		
2			4		

SHEET NO. C2-4
 TOTAL SHEETS 5
 CUL 2 STD. NO. CW4506

MODJESKI and MASTERS
 Experience great bridges.
 333 FAYETTEVILLE STREET, SUITE 500
 RALEIGH, NC 27601
 NC LICENSE NO. C-2979



DocuSigned by:
 Jason R Doughty
 SF73FA2DEA874E8...

**DOCUMENT NOT CONSIDERED FINAL
 UNLESS ALL SIGNATURES COMPLETED**

DESIGNED BY: J. BORUTA DATE: MAR 2019
 DRAWN BY: K. WHITE DATE: MAR 2019
 CHECKED BY: B. LOFLIN DATE: APR 2019
 DESIGN ENGINEER OF RECORD: J. DOUGHTY DATE: NOV 2019

4/22/2020
 411_DOT_R2233BB_SWL_WING.dgn