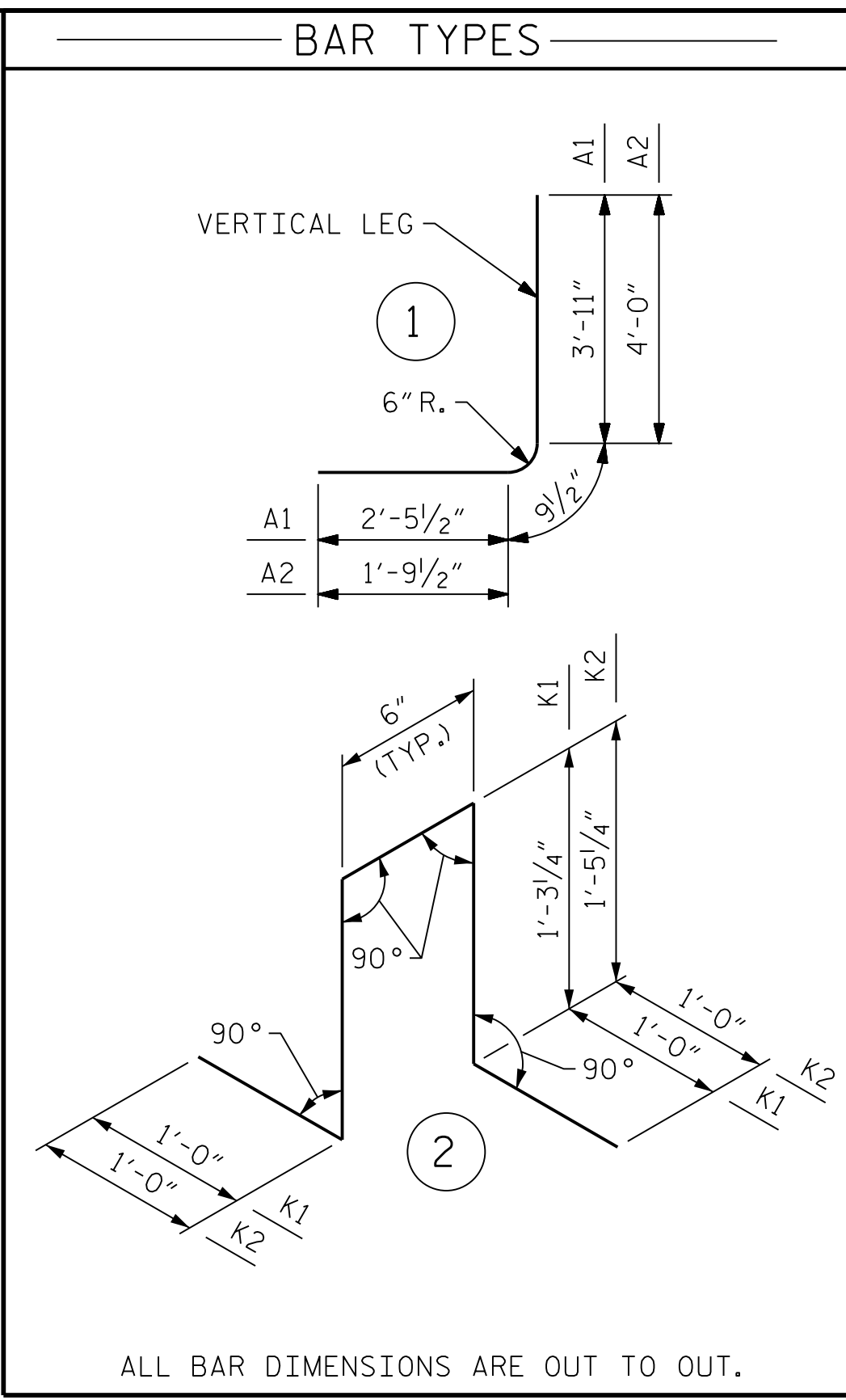


**RIGHT ANGLE SECTION OF BARREL**

THERE ARE 49 C1 BARS IN SECTION OF BARREL  
 \* ALL STANDEE BARS @ 4'-0" CTS.



ALL BAR DIMENSIONS ARE OUT TO OUT.

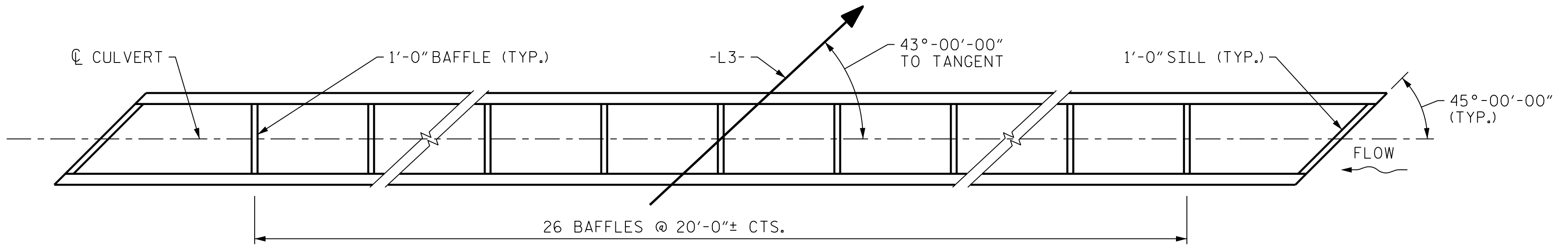
**SPLICE LENGTH CHART**

BAR	SIZE	SPLICE LENGTH
C1	#4	1'-11"

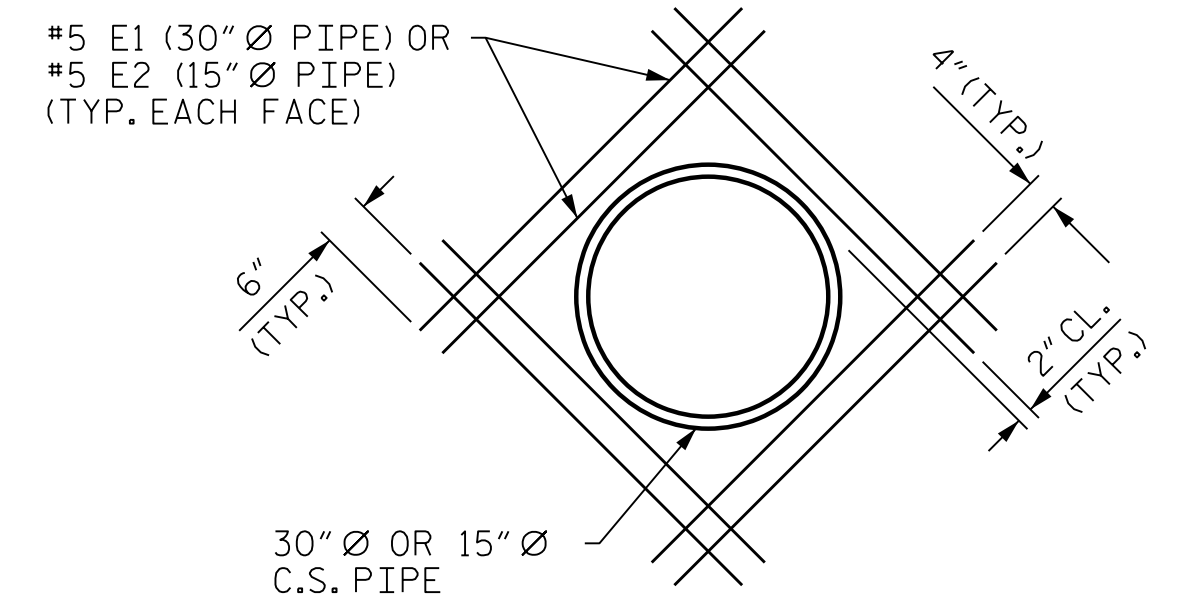
**BILL OF MATERIAL**

BAR	NUMBER	SIZE	TYPE	LENGTH	WEIGHT
A1	2172	#5	1	7'-2"	16235
A2	2172	#5	1	6'-7"	14914
A100	1597	#6	STR	10'-1"	24187
A101	2	#6	STR	10'-0"	30
A102	2	#6	STR	9'-4"	29
A103	2	#6	STR	9'-4"	28
A104	2	#6	STR	9'-0"	27
A105	2	#6	STR	8'-8"	26
A106	2	#6	STR	8'-4"	25
A107	2	#6	STR	8'-0"	24
A108	2	#6	STR	7'-8"	23
A109	2	#6	STR	7'-4"	22
A110	2	#6	STR	7'-0"	21
A111	2	#6	STR	6'-8"	20
A112	2	#6	STR	6'-4"	19
A113	2	#6	STR	6'-0"	18
A114	2	#6	STR	5'-8"	17
A115	2	#6	STR	5'-4"	16
A116	2	#6	STR	5'-0"	15
A117	2	#6	STR	4'-8"	14
A118	2	#6	STR	4'-4"	13
A119	2	#6	STR	4'-0"	12
A120	2	#6	STR	3'-8"	11
A121	2	#6	STR	3'-4"	10
A122	2	#6	STR	3'-0"	9
A123	2	#6	STR	2'-8"	8
A124	2	#6	STR	2'-4"	7
A125	2	#6	STR	2'-0"	6
A200	1277	#6	STR	10'-1"	19340
A201	2	#6	STR	10'-0"	30
A202	2	#6	STR	9'-7"	29
A203	2	#6	STR	9'-2"	28
A204	2	#6	STR	8'-9"	26
A205	2	#6	STR	8'-4"	25
A206	2	#6	STR	7'-11"	24
A207	2	#6	STR	7'-6"	23
A208	2	#6	STR	7'-1"	21
A209	2	#6	STR	6'-8"	20
A210	2	#6	STR	6'-3"	19
A211	2	#6	STR	5'-10"	18
A212	2	#6	STR	5'-5"	16
A213	2	#6	STR	5'-0"	15
A214	2	#6	STR	4'-7"	14
A215	2	#6	STR	4'-2"	13
A216	2	#6	STR	3'-9"	11
A217	2	#6	STR	3'-4"	10
A218	2	#6	STR	2'-11"	9
A219	2	#6	STR	2'-6"	8
A220	2	#6	STR	2'-1"	6
A300	1064	#4	STR	10'-1"	7167
A301	2	#4	STR	10'-0"	13
A302	2	#4	STR	9'-6"	13
A303	2	#4	STR	9'-0"	12
A304	2	#4	STR	8'-6"	11
A305	2	#4	STR	8'-0"	11
A306	2	#4	STR	7'-6"	10
A307	2	#4	STR	7'-0"	9
A308	2	#4	STR	6'-6"	9
A309	2	#4	STR	6'-0"	8
A310	2	#4	STR	5'-6"	7
A311	2	#4	STR	5'-0"	7
A312	2	#4	STR	4'-6"	6
A313	2	#4	STR	4'-0"	5
A314	2	#4	STR	3'-6"	5
A315	2	#4	STR	3'-0"	4
A316	2	#4	STR	2'-6"	3
A317	2	#4	STR	2'-0"	3
B1	1088	#4	STR	9'-4"	6783
B2	2172	#5	STR	5'-4"	12082
C1	980	#4	STR	29'-0"	18985
D1	86	#6	STR	1'-10"	237
E1	32	#5	STR	4'-10"	161
E2	16	#5	STR	3'-7"	60
G1	4	#4	STR	14'-4"	38
K1	272	#5	2	5'-1"	1442
K2	272	#5	2	5'-5"	1537
S2	12	#8	STR	14'-4"	459

REINFORCING STEEL = LBS. 131881

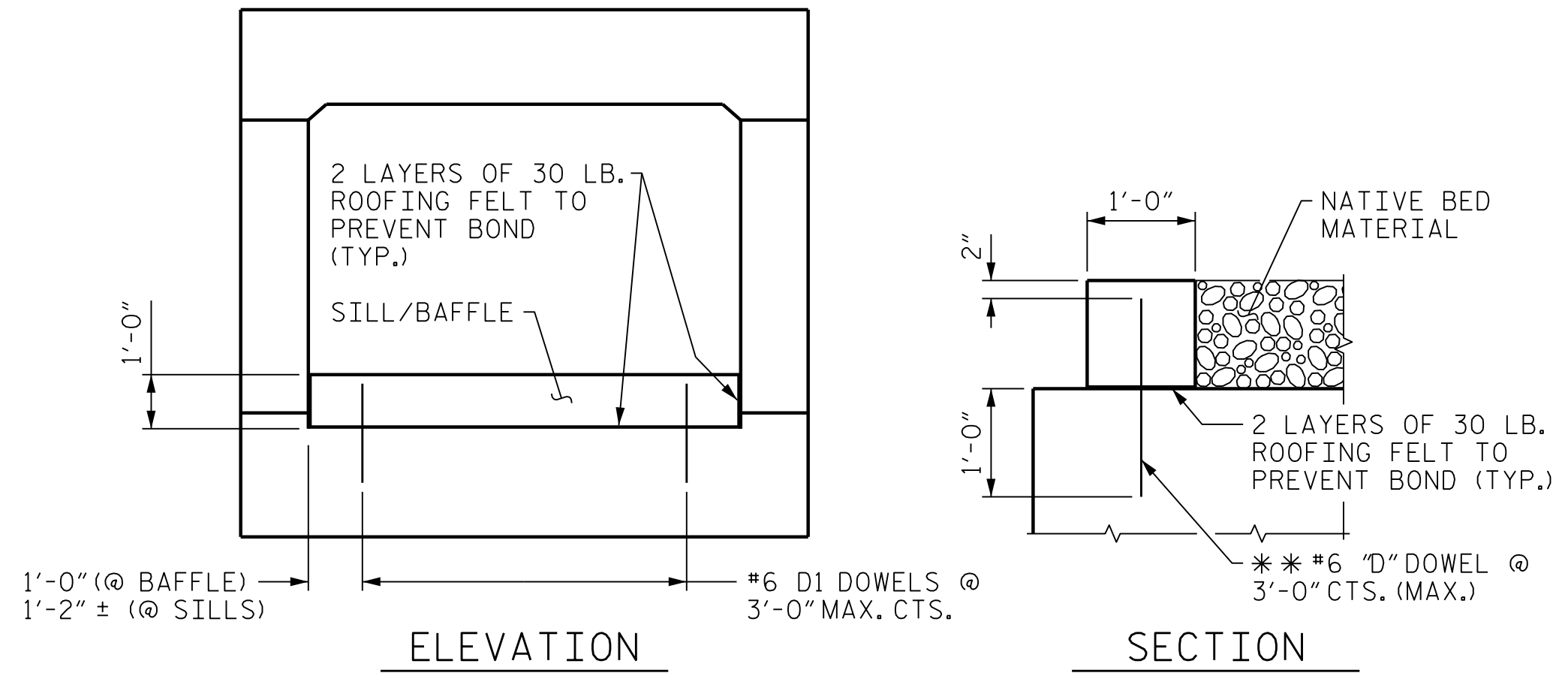


**PLAN VIEW SHOWING SILL/BAFFLE LOCATIONS**



**DETAIL OF REINFORCING AROUND 30" Ø AND 15" Ø PIPE**

FOR PIPE THROUGH EXTERIOR WALL, FIELD CUT AND BEND "B" AND "C" BARS AS NEEDED TO CLEAR PIPE.  
 SHIFT A100 BARS AS NECESSARY TO CLEAR "E" BARS.



**SILL/BAFFLE DETAILS**

\*\*DOWELS MAY BE PUSHED INTO GREEN CONCRETE AFTER SLAB HAS BEEN FLOAT FINISHED.

PROJECT NO. R-2233BB  
RUTHERFORD COUNTY  
 STATION: 830+02.00 -L3-

SHEET 3 OF 5

STATE OF NORTH CAROLINA  
 DEPARTMENT OF TRANSPORTATION  
 RALEIGH

**SINGLE 8 FT. X 6 FT. CONCRETE BOX CULVERT**  
 43°-00'-00" SKEW

REVISIONS				SHEET NO.	
NO.	BY:	DATE:	NO.	BY:	DATE:
1			3		
2			4		

TOTAL SHEETS: 5

**MODJESKI and MASTERS**  
 Experience great bridges.  
 333 FAYETTEVILLE STREET, SUITE 500  
 RALEIGH, NC 27601  
 NC LICENSE NO. C-2979

PROFESSIONAL ENGINEER  
 SEAL 032987  
 JASON R. DOUGHTY  
 4/22/2020  
 DocuSigned by:  
 Jason R Doughty  
 5F73FA2DEA874E8...

**DOCUMENT NOT CONSIDERED FINAL UNLESS ALL SIGNATURES COMPLETED**

DESIGNED BY: J. BORUTA DATE: MAR 2019  
 DRAWN BY: K. WHITE DATE: MAR 2019  
 CHECKED BY: B. LOFLIN DATE: APR 2019  
 DESIGN ENGINEER OF RECORD: J. DOUGHTY DATE: NOV 2019

4/22/2020  
 411\_005\_R2233BB\_SML.DET.dgn