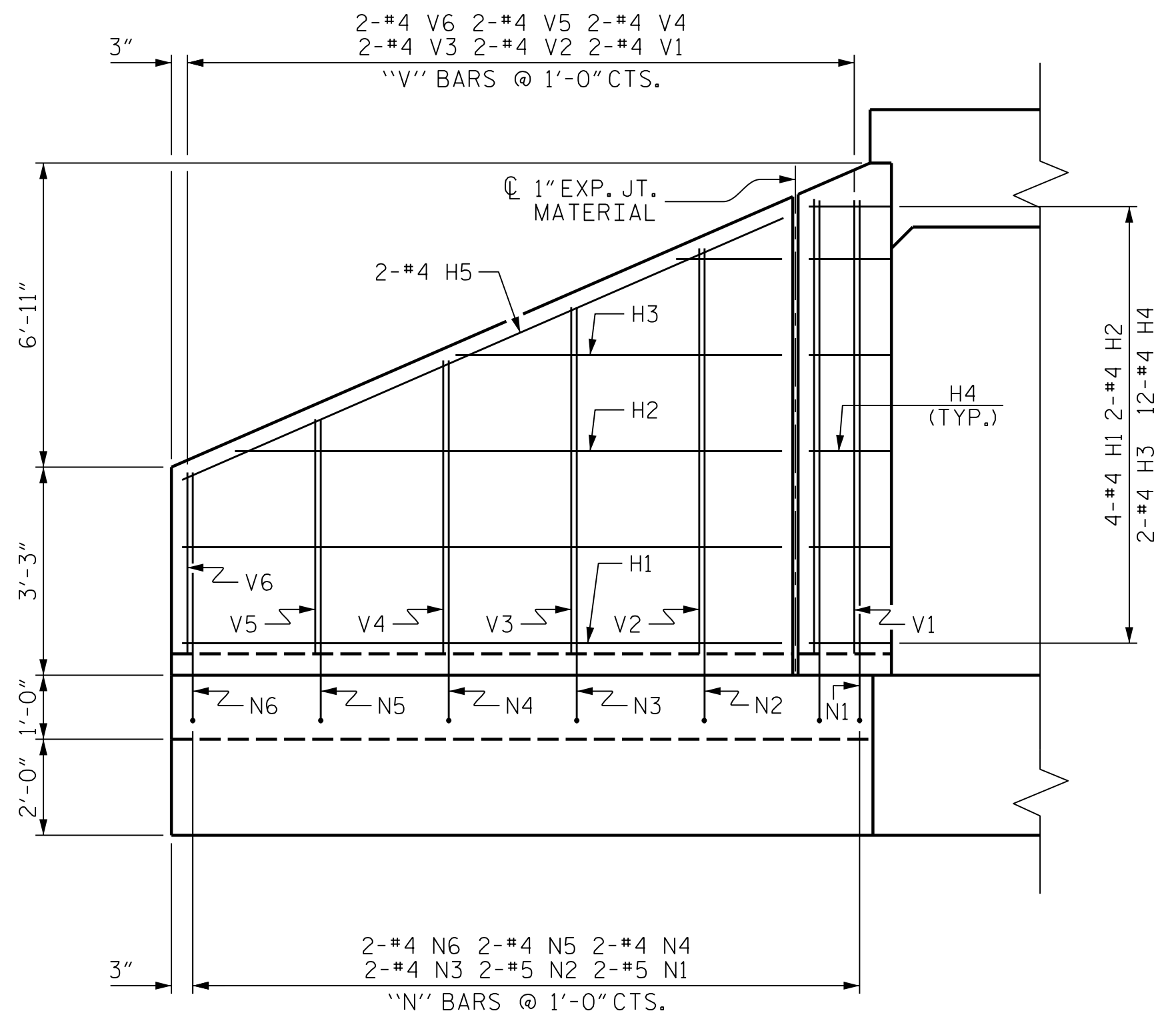
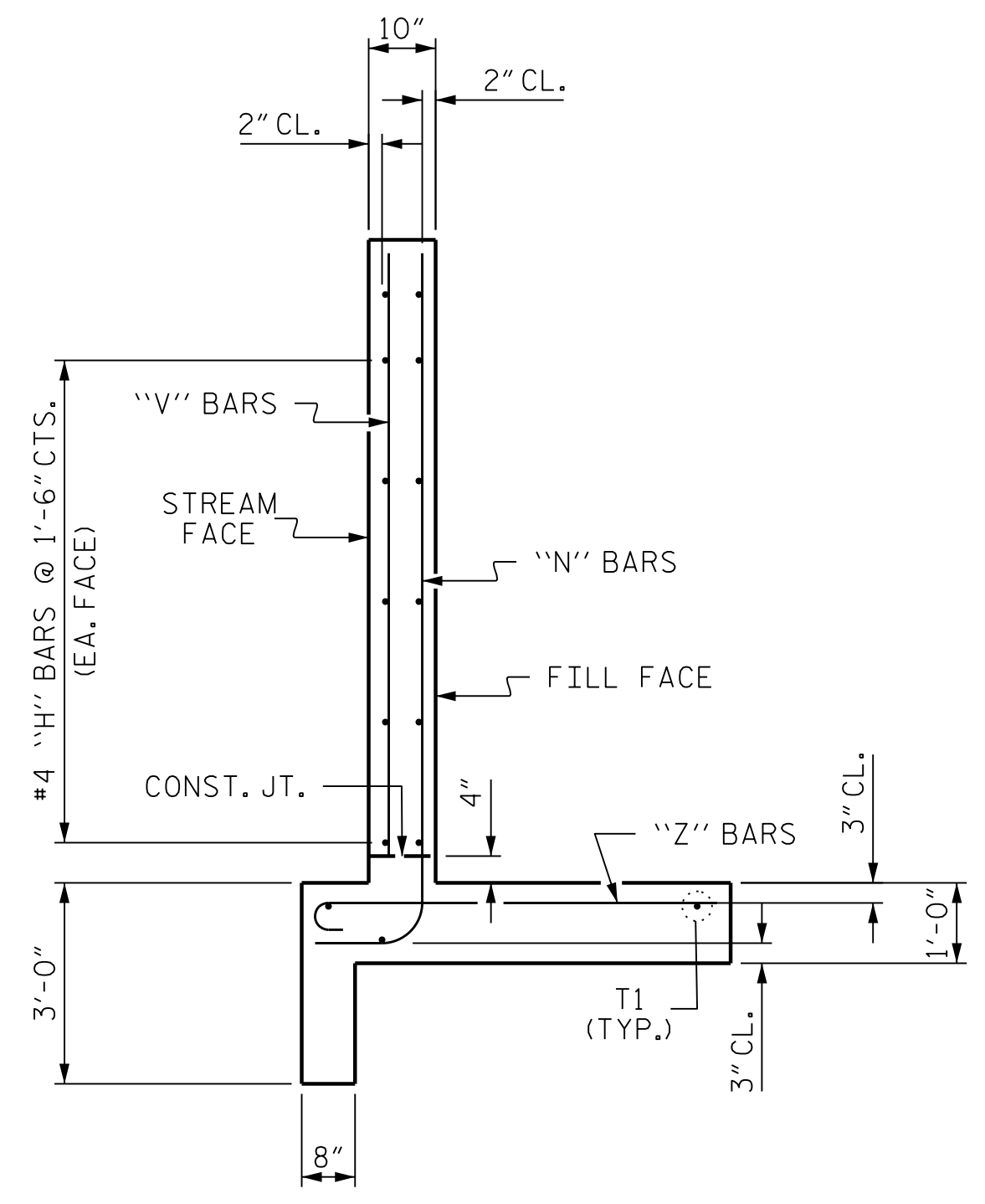


PLAN



ELEVATION



TYPICAL WING SECTION

BAR TYPES

ALL BAR DIMENSIONS ARE OUT TO OUT.

BILL OF MATERIAL					
BAR	NO.	SIZE	TYPE	LENGTH	WEIGHT
H1	16	#4	STR	9'-4"	100
H2	8	#4	STR	8'-6"	45
H3	8	#4	STR	5'-1"	27
H4	48	#4	1	3'-3"	104
H5	8	#4	STR	10'-3"	55
N1	8	#5	2	9'-2"	76
N2	8	#5	2	8'-4"	70
N3	8	#4	2	7'-6"	40
N4	8	#4	2	6'-7"	35
N5	8	#4	2	5'-9"	31
N6	8	#4	2	4'-10"	26
S1	12	#6	STR	6'-0"	108
T1	12	#5	STR	11'-3"	141
V1	8	#4	STR	7'-1"	38
V2	8	#4	STR	6'-4"	34
V3	8	#4	STR	5'-5"	29
V4	8	#4	STR	4'-7"	24
V5	8	#4	STR	3'-8"	20
V6	8	#4	STR	2'-10"	15
Z1	16	#4	3	4'-11"	53
Z2	8	#4	3	4'-6"	24
Z3	8	#4	3	4'-0"	21
Z4	8	#4	3	3'-7"	19
Z5	8	#4	3	3'-1"	16

TOTAL REINFORCING STEEL FOR 4 WINGS 1151 LBS

CLASS A CONCRETE
 4 WINGS 17.4 CY
 2 HEADWALLS 1.3 CY
 2 END CURTAIN WALLS 1.3 CY
 TOTAL 20.0 CY

PROJECT NO. R-2233BB
 RUTHERFORD COUNTY
 STATION: 797+66.00 -L3-

SHEET 4 OF 5

STATE OF NORTH CAROLINA
 DEPARTMENT OF TRANSPORTATION
 RALEIGH

STANDARD WINGS FOR CONCRETE BOX CULVERT
 H = 7'-0" SLOPE = 2:1
 90° SKEW

REVISIONS					
NO.	BY:	DATE:	NO.	BY:	DATE:
1			3		
2			4		

SHEET NO. C1-4
 TOTAL SHEETS 5

MODJESKI and MASTERS
 Experience great bridges.
 333 FAYETTEVILLE STREET, SUITE 500
 RALEIGH, NC 27601
 NC LICENSE NO. C-2979

DocuSigned by:
 Jason R. Dougherty
 5F73FA2DEA974E8...

DOCUMENT NOT CONSIDERED FINAL
 UNLESS ALL SIGNATURES COMPLETED

4/22/2020 410.007_R2233BB_SML_WNG.dgn

DESIGNED BY: A. DUTTA DATE: AUG 2019
 DRAWN BY: K. WHITE DATE: AUG 2019
 CHECKED BY: B. LOFLIN DATE: AUG 2019
 DESIGN ENGINEER OF RECORD: J. DOUGHTY DATE: NOV 2019

DRAWN BY: CCJ 10/99 REV. 6/19 MAA/THC
 CHECKED BY: RWW 03/00