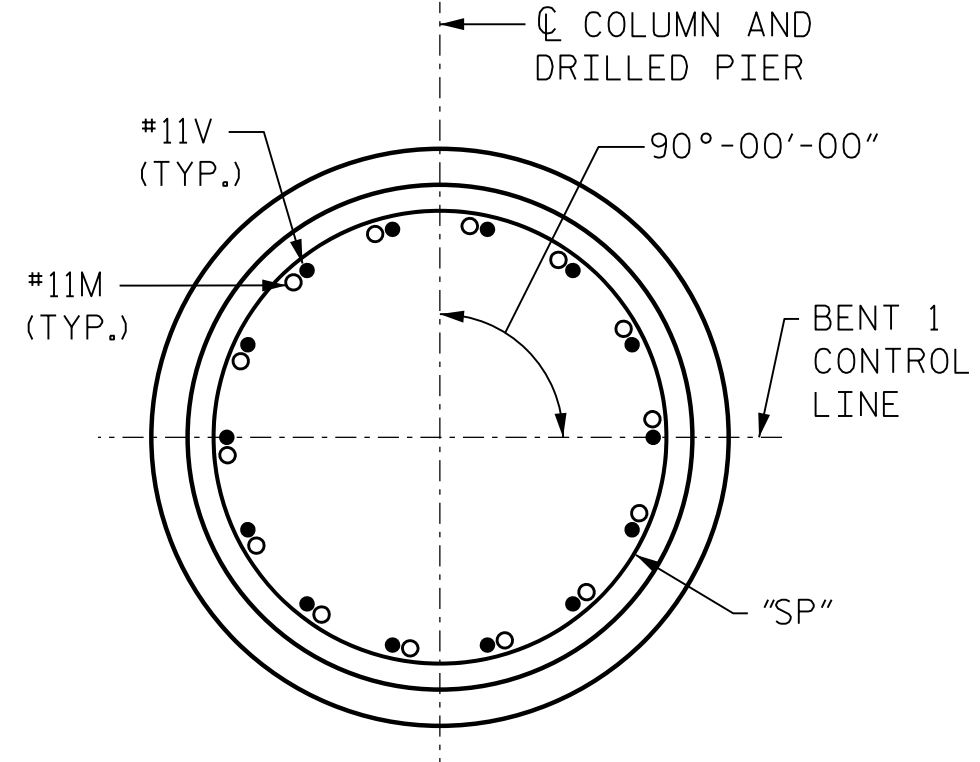
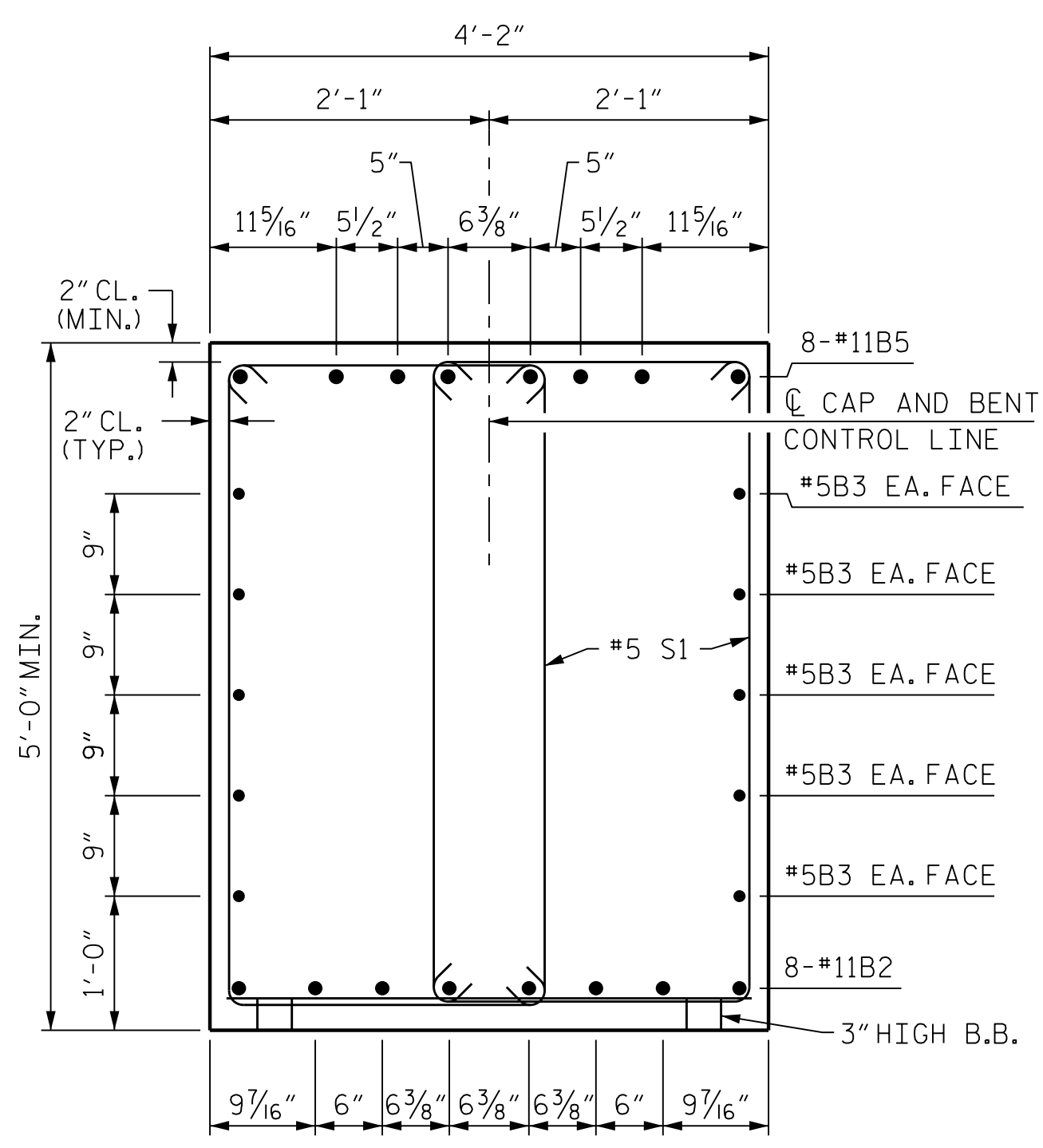


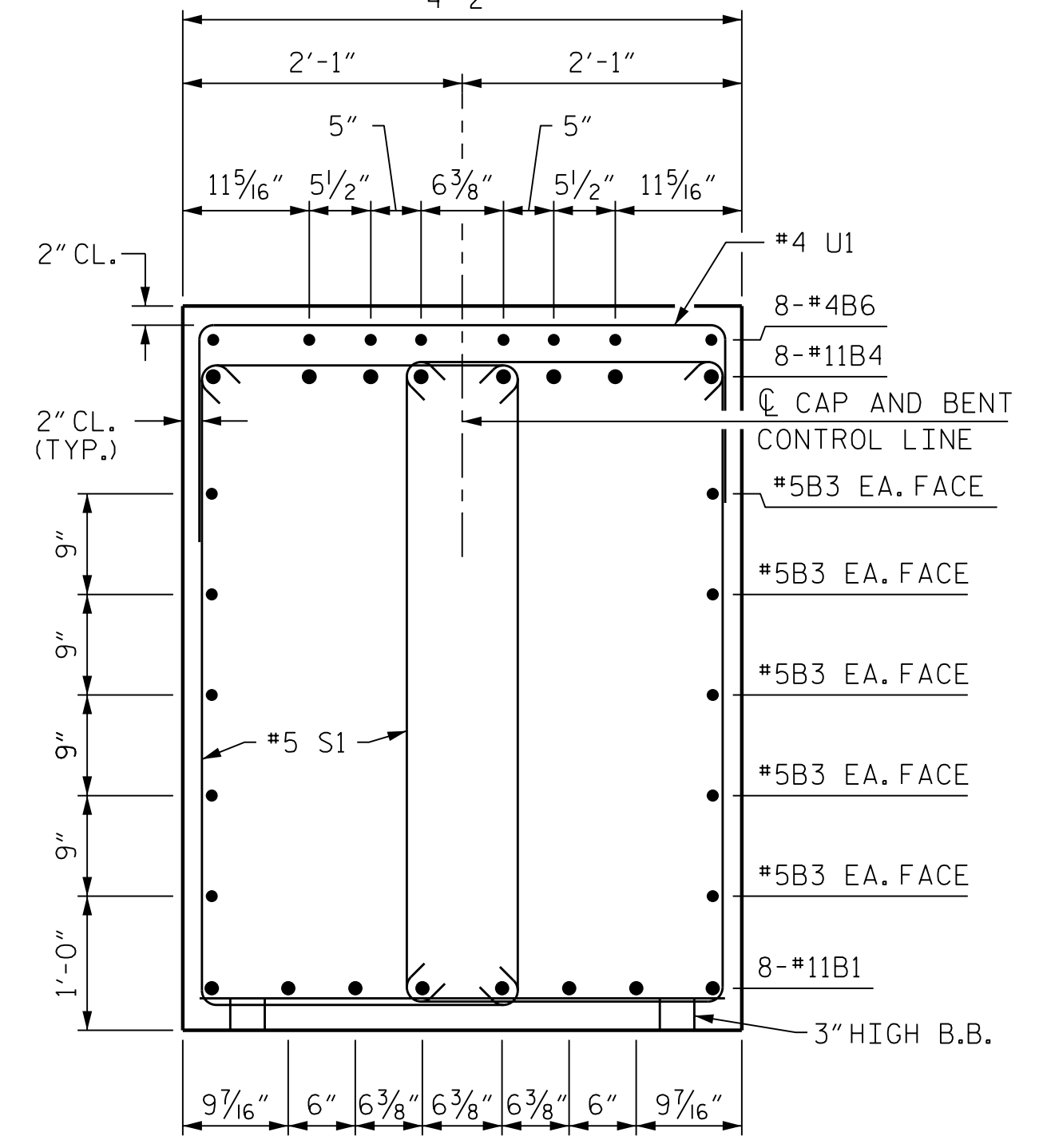
PLAN OF COLUMNS AND DRILLED PIERS



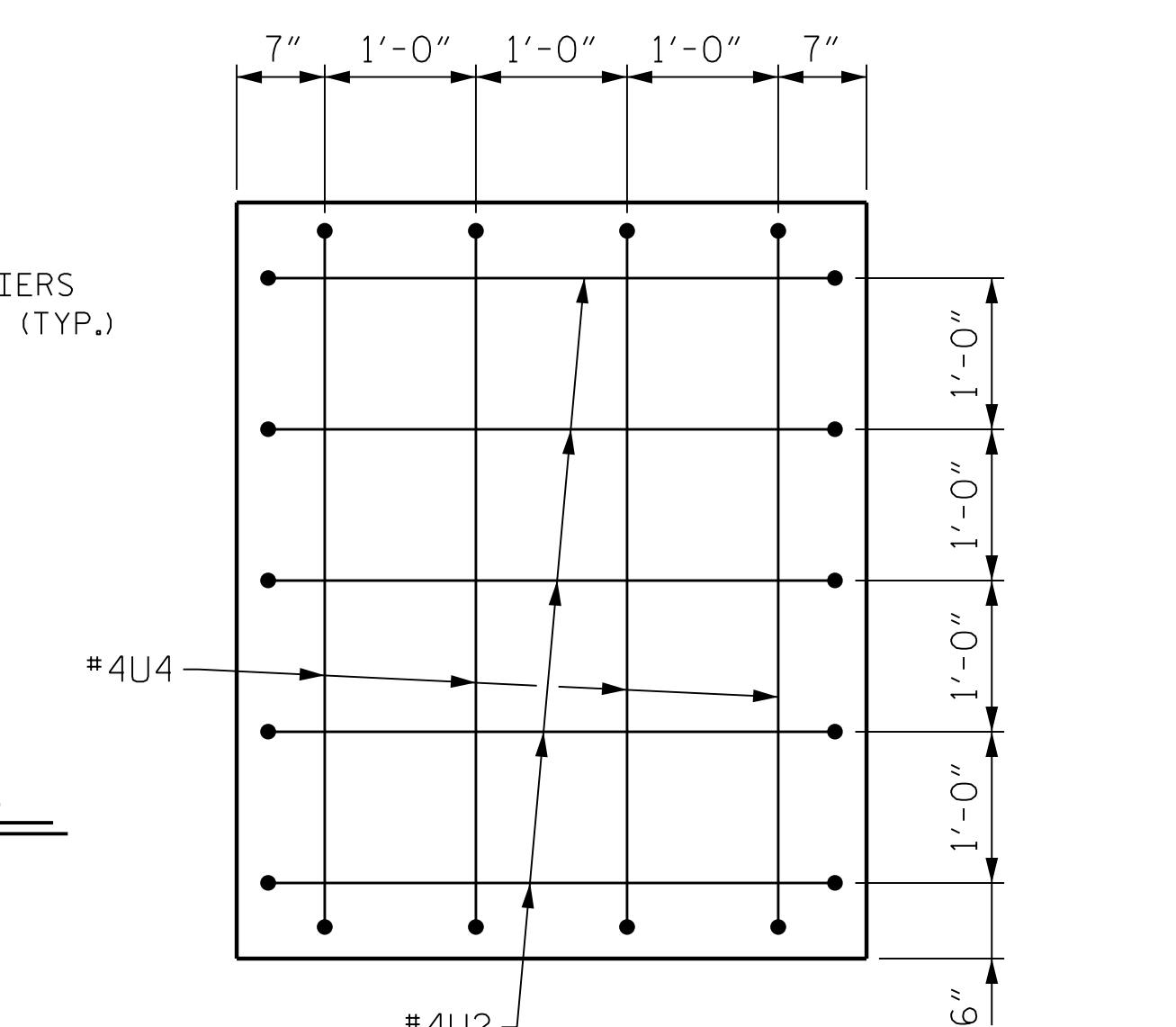
COLUMN AND DRILLED PIER DETAIL



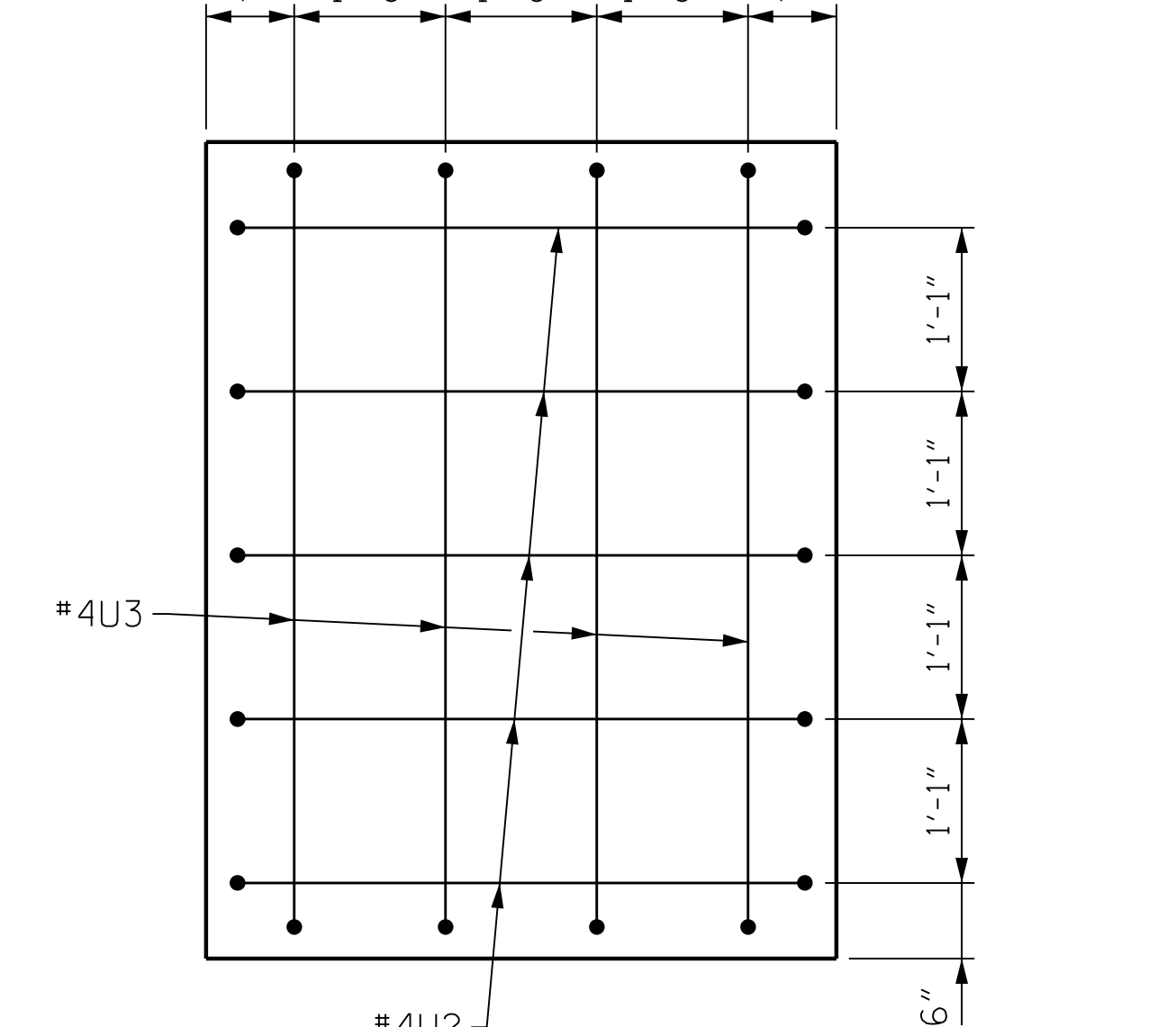
SECTION A-A



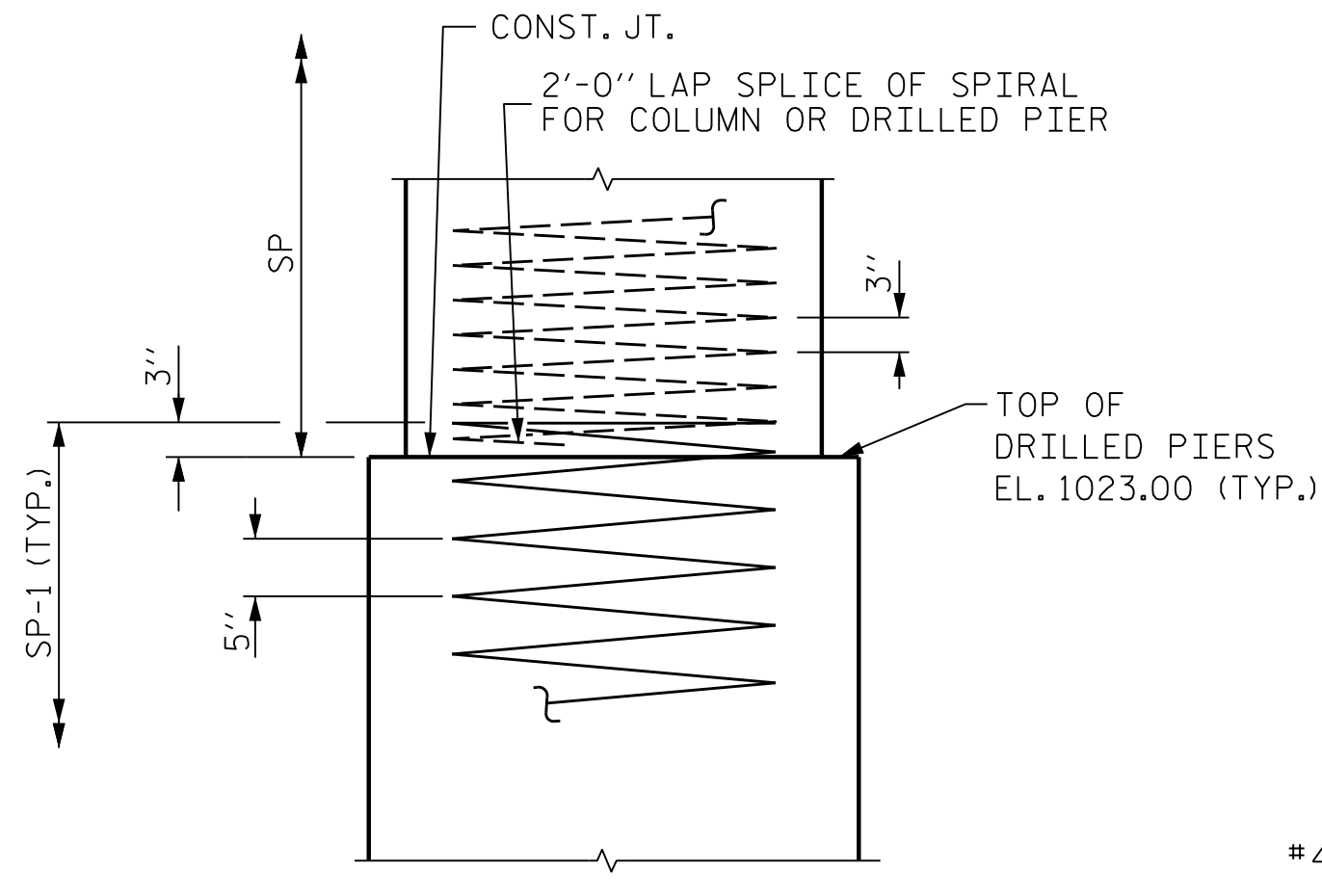
SECTION B-B



VIEW X-X



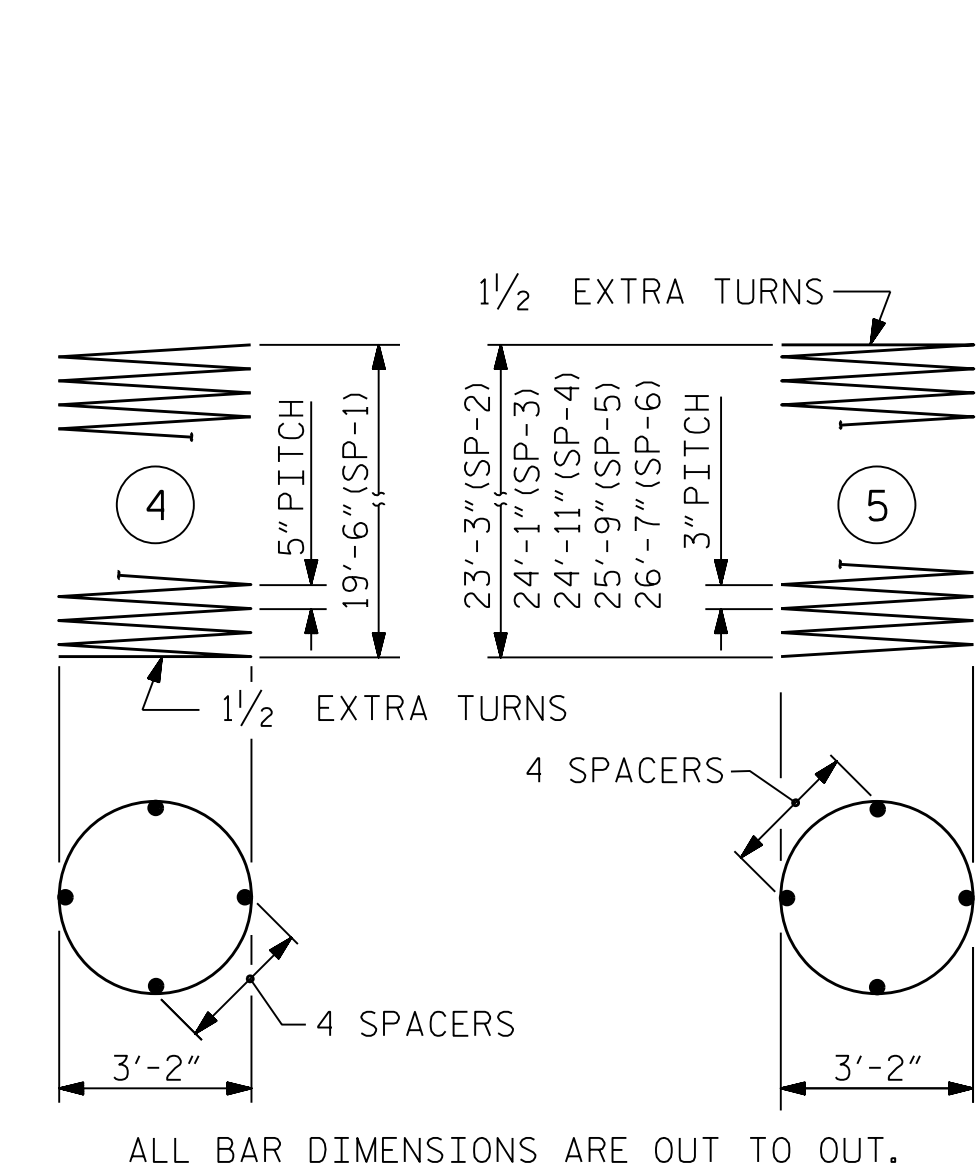
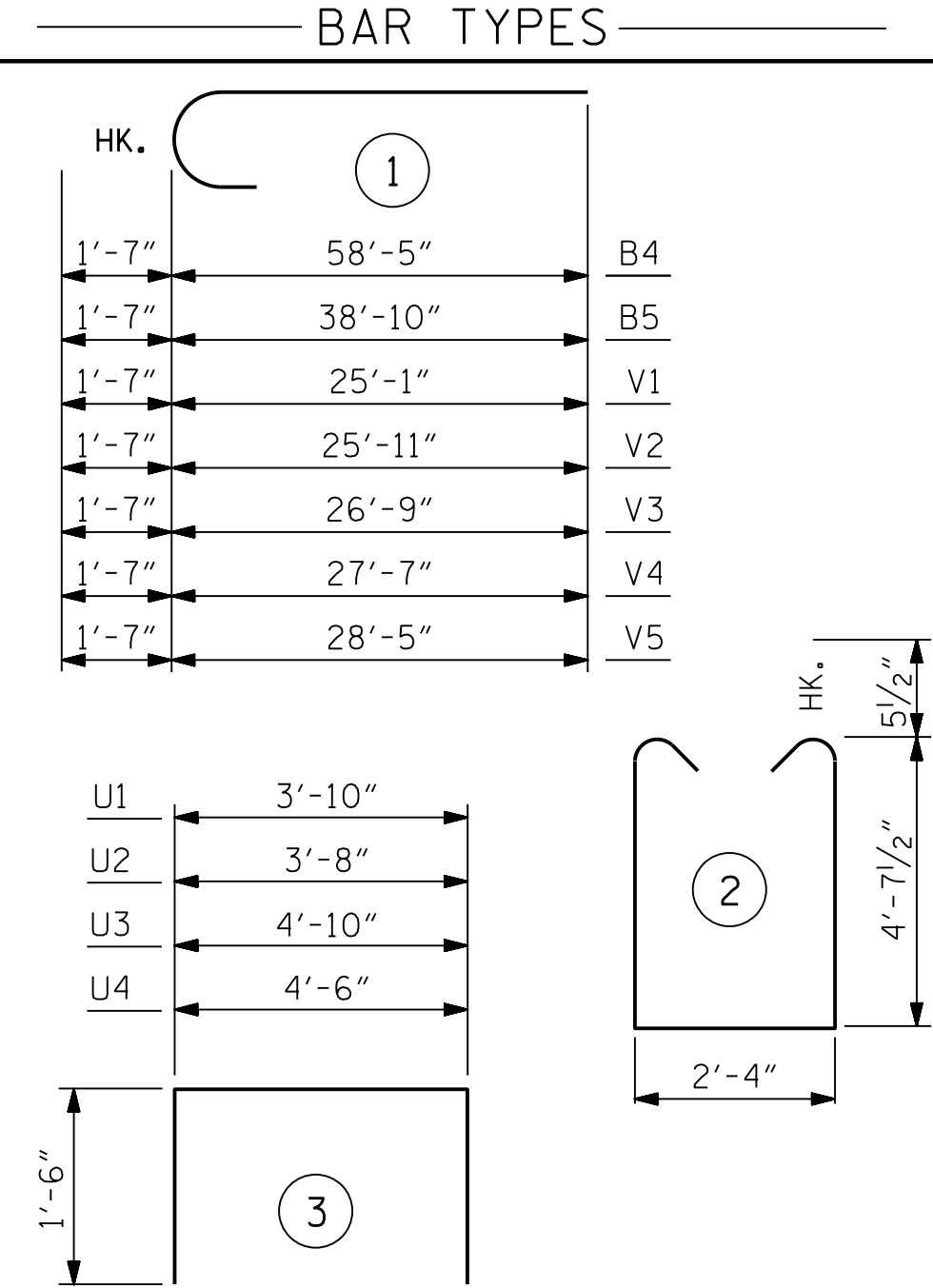
VIEW Y-Y



CONSTRUCTION JOINT DETAIL

"V" AND "M" BARS NOT SHOWN FOR CLARITY

| | | | |
|----------------------------|------------|-------|-----------|
| DESIGNED BY: | J. BORUTA | DATE: | JULY 2019 |
| DRAWN BY: | K. WHITE | DATE: | JULY 2019 |
| CHECKED BY: | B. LOFLIN | DATE: | AUG 2019 |
| DESIGN ENGINEER OF RECORD: | J. DOUGHTY | DATE: | NOV 2019 |



ALL BAR DIMENSIONS ARE OUT TO OUT.

* THE SP-1 SPIRAL REINFORCING STEEL SHALL BE W31 OR D-31 COLD DRAWN WIRE OR #5 PLAIN OR DEFORMED BAR.
 ** THE SP-2, SP-3, SP-4, SP-5 AND SP-6 SPIRAL REINFORCING STEEL SHALL BE W20 OR D-20 COLD DRAWN WIRE OR #4 PLAIN OR DEFORMED BAR.

| BILL OF MATERIAL | | | | | |
|------------------|--------|------|------|--------|--------|
| BAR | NUMBER | SIZE | TYPE | LENGTH | WEIGHT |
| B1 | 8 | #11 | STR | 43'-4" | 1842 |
| B2 | 8 | #11 | STR | 52'-4" | 2224 |
| B3 | 20 | #5 | STR | 46'-9" | 975 |
| B4 | 8 | #11 | 1 | 60'-0" | 2550 |
| B5 | 8 | #11 | 1 | 40'-5" | 1718 |
| B6 | 64 | #4 | STR | 9'-2" | 392 |
| B7 | 8 | #4 | STR | 11'-3" | 60 |
| M1 | 70 | #11 | STR | 27'-9" | 10321 |
| S1 | 352 | #5 | 2 | 12'-6" | 4589 |
| U1 | 127 | #4 | 3 | 6'-10" | 580 |
| U2 | 10 | #4 | 3 | 6'-8" | 45 |
| U3 | 4 | #4 | 3 | 7'-10" | 21 |
| U4 | 4 | #4 | 3 | 7'-6" | 20 |
| V1 | 14 | #11 | 1 | 26'-8" | 1984 |
| V2 | 14 | #11 | 1 | 27'-6" | 2046 |
| V3 | 14 | #11 | 1 | 28'-4" | 2107 |
| V4 | 14 | #11 | 1 | 29'-2" | 2169 |
| V5 | 14 | #11 | 1 | 30'-0" | 2231 |

| REINFORCING STEEL | | | | | |
|-------------------|--------|------|------|----------|--------|
| SPAN | NUMBER | SIZE | TYPE | LENGTH | WEIGHT |
| SP-1 | 5 | * | 4 | 479'-11" | 2503 |
| SP-2 | 1 | ** | 5 | 933'-0" | 623 |
| SP-3 | 1 | ** | 5 | 972'-3" | 649 |
| SP-4 | 1 | ** | 5 | 1001'-8" | 669 |
| SP-5 | 1 | ** | 5 | 1031'-2" | 689 |
| SP-6 | 1 | ** | 5 | 1070'-5" | 715 |

| SPIRAL COLUMN REINFORCING STEEL | | | | | |
|---------------------------------|--------|------|------|----------|--------|
| SPAN | NUMBER | SIZE | TYPE | LENGTH | WEIGHT |
| SP-1 | 5 | * | 4 | 479'-11" | 2503 |
| SP-2 | 1 | ** | 5 | 933'-0" | 623 |
| SP-3 | 1 | ** | 5 | 972'-3" | 649 |
| SP-4 | 1 | ** | 5 | 1001'-8" | 669 |
| SP-5 | 1 | ** | 5 | 1031'-2" | 689 |
| SP-6 | 1 | ** | 5 | 1070'-5" | 715 |

| CLASS "A" CONCRETE BREAKDOWN | |
|------------------------------|-----------|
| POUR #2 - COLUMNS | 43.8 C.Y. |
| POUR #3 - CAP | 74.1 C.Y. |

| CLASS "A" CONCRETE | |
|-----------------------|------------|
| DRILLED PIER CONCRETE | 117.9 C.Y. |

| POUR #1 - DRILLED PIER CONCRETE | |
|-----------------------------------|-----------|
| 4'-0" Ø DRILLED PIERS IN SOIL | 50.0 L.F. |
| 4'-0" Ø DRILLED PIERS NOT IN SOIL | 50.0 L.F. |

| CSL TUBES | |
|-----------------------------------|-----------|
| 4'-0" Ø DRILLED PIERS IN SOIL | 50.0 L.F. |
| 4'-0" Ø DRILLED PIERS NOT IN SOIL | 50.0 L.F. |

| TOTAL SHEETS | |
|--------------|--|
| 45 | |

PROJECT NO. R-2233BB
RUTHERFORD COUNTY
 STATION: 26+65.52 -Y3-
 SHEET 3 OF 3

STATE OF NORTH CAROLINA
 DEPARTMENT OF TRANSPORTATION
 RALEIGH
 SUBSTRUCTURE
 BENT 1

MODJESKI and MASTERS
 Experience great bridges.
 333 FAYETTEVILLE STREET, SUITE 500
 RALEIGH, NC 27601
 NC LICENSE NO. C-2979

PROFESSIONAL ENGINEER
 SEAL
 032967
 JASON R. DOUGHTY
 4/22/2020

| REVISIONS | | | | | |
|-----------|-----|-------|-----|-----|-------|
| NO. | BY: | DATE: | NO. | BY: | DATE: |
| 1 | | | 3 | | |
| 2 | | | 4 | | |

DOCUMENT NOT CONSIDERED FINAL UNLESS ALL SIGNATURES COMPLETED

DocuSigned by:
 Jason R. Doughty
 SF73FA2DEA974E8...