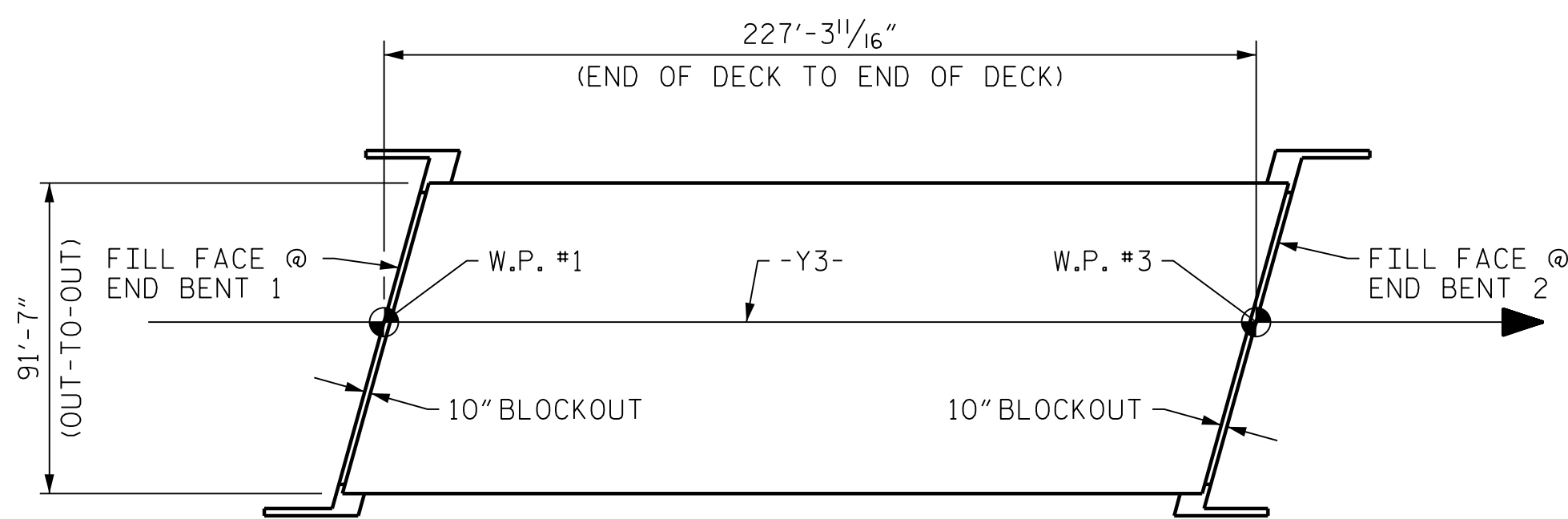
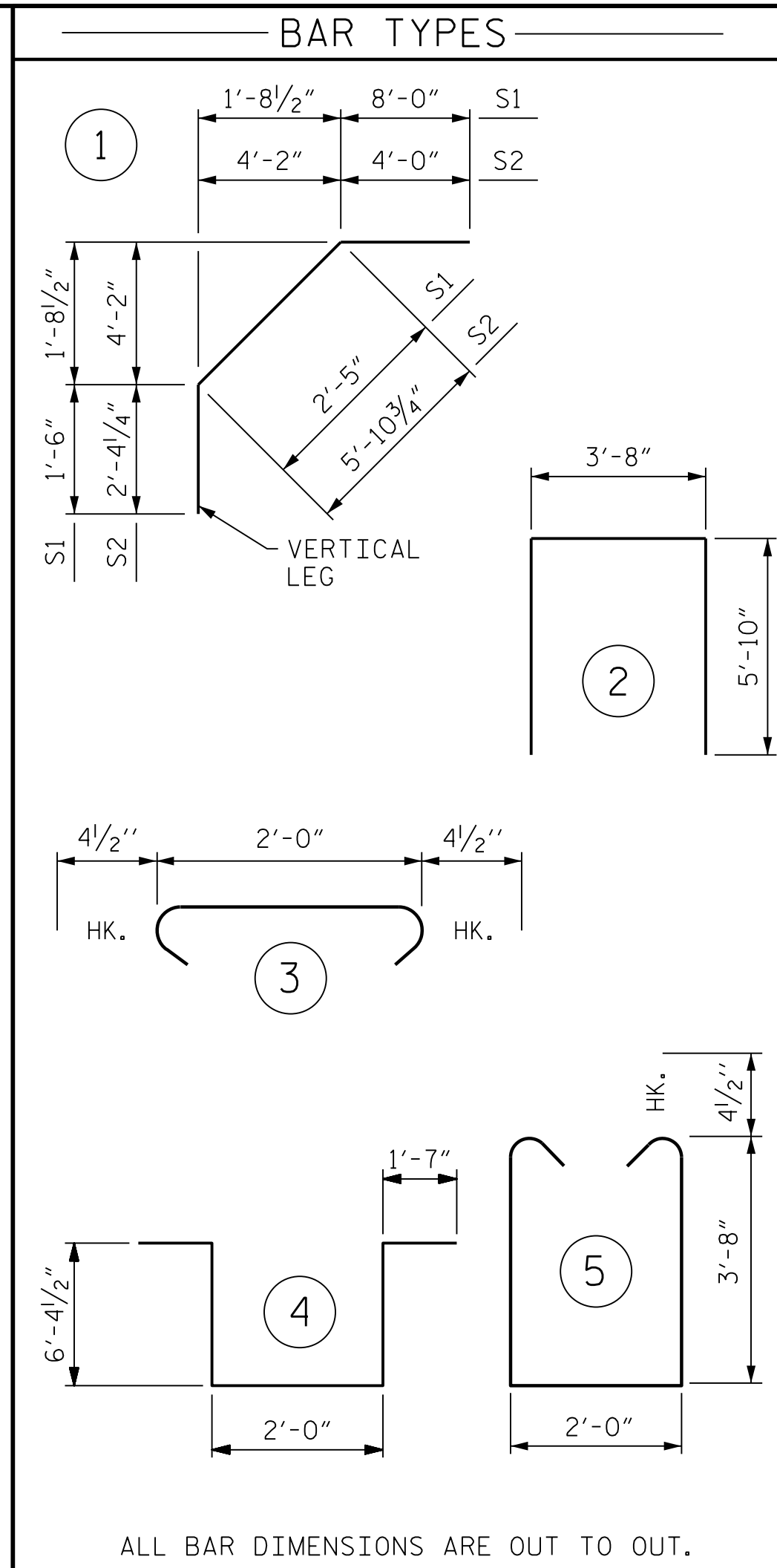


SUPERSTRUCTURE REINFORCING STEEL LENGTHS ARE BASED ON THE FOLLOWING MINIMUM SPLICE LENGTHS

BAR SIZE	SUPERSTRUCTURE EXCEPT APPROACH SLABS, PARAPET, AND BARRIER RAIL		APPROACH SLABS		PARAPET AND BARRIER RAIL
	EPOXY COATED	UNCOATED	EPOXY COATED	UNCOATED	
#4	1'-11"	1'-7"	1'-11"	1'-7"	2'-6"
#5	2'-5"	2'-0"	2'-5"	2'-0"	3'-1"
#6	2'-10"	2'-5"	3'-7"	2'-5"	3'-8"
#7	4'-2"	2'-9"			
#8	4'-9"	3'-2"			



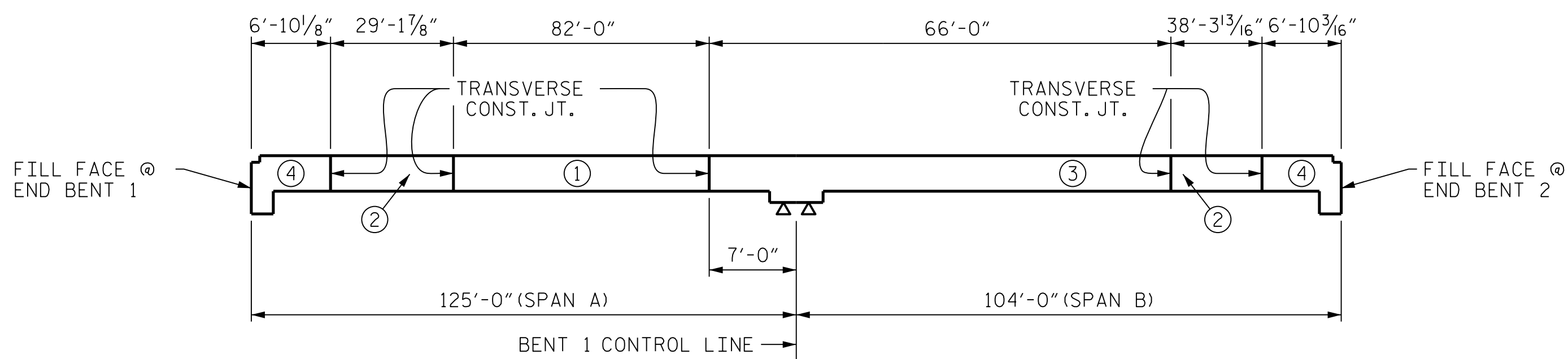
LAYOUT FOR COMPUTING AREA REINFORCED CONCRETE DECK SLAB (SQ. FT. = 20,818)



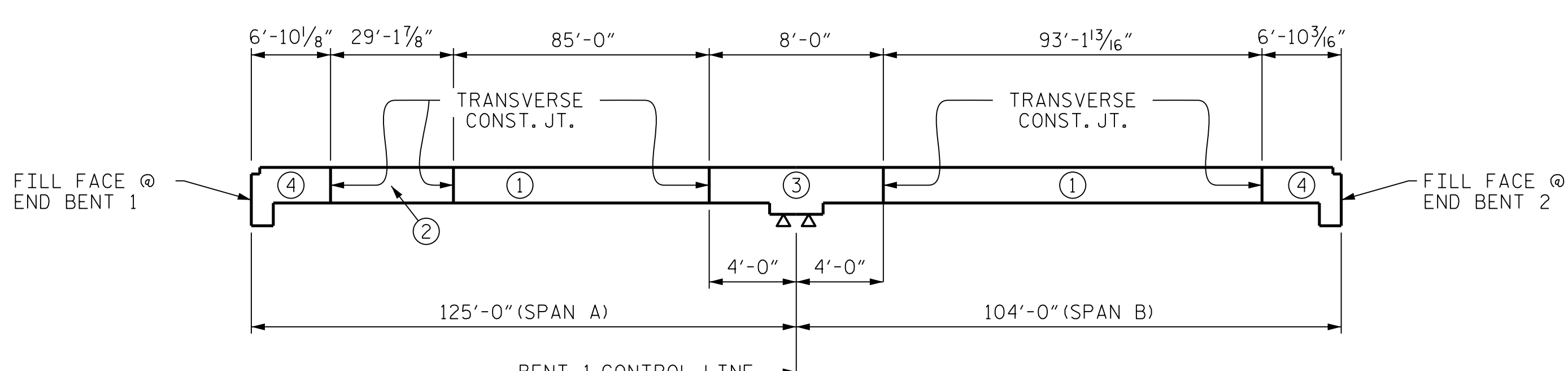
ALL BAR DIMENSIONS ARE OUT TO OUT.

BILL OF MATERIAL						BILL OF MATERIAL						BILL OF MATERIAL					
BAR	NUMBER	SIZE	TYPE	LENGTH	WEIGHT	BAR	NUMBER	SIZE	TYPE	LENGTH	WEIGHT	BAR	NUMBER	SIZE	TYPE	LENGTH	WEIGHT
* A1	676	5	STR	46'-10"	33021	A2	676	5	STR	46'-8"	32903	* B1	183	5	STR	24'-10"	4740
* A101	6	5	STR	45'-5"	284	A201	6	5	STR	45'-2"	283	* B2	126	4	STR	31'-3"	2630
* A102	6	5	STR	39'-11"	250	A202	6	5	STR	39'-9"	249	* B3	63	5	STR	50'-0"	3285
* A103	6	5	STR	34'-5"	215	A203	6	5	STR	34'-4"	215	* B4	63	5	STR	31'-2"	2048
* A104	1	5	STR	55'-8"	58	A204	1	5	STR	55'-8"	58	* B5	120	5	STR	36'-6"	4568
* A105	1	5	STR	52'-0"	54	A205	1	5	STR	52'-0"	54	* B6	126	4	STR	25'-10"	2174
* A106	1	5	STR	48'-5"	50	A206	1	5	STR	48'-5"	50	* B7	183	5	STR	20'-10"	3976
* A107	1	5	STR	44'-9"	47	A207	1	5	STR	44'-9"	47	* B8	292	5	STR	58'-4"	17766
* A108	1	5	STR	41'-2"	43	A208	1	5	STR	41'-2"	43	B9	54	5	STR	24'-10"	1399
* A109	1	5	STR	37'-6"	39	A209	1	5	STR	37'-6"	39	B10	54	5	STR	36'-6"	2056
* A110	1	5	STR	33'-11"	35	A210	1	5	STR	33'-11"	35	B11	54	5	STR	20'-10"	1173
* A111	1	5	STR	30'-3"	32	A211	1	5	STR	30'-3"	32						
* A112	1	5	STR	26'-8"	28	A212	1	5	STR	26'-8"	28	K1	42	4	STR	32'-3"	905
* A113	1	5	STR	23'-0"	24	A213	1	5	STR	23'-0"	24	K2	36	4	STR	5'-6"	132
* A114	1	5	STR	19'-4"	20	A214	1	5	STR	19'-4"	20	K3	180	4	STR	8'-7"	1032
* A115	1	5	STR	15'-9"	16	A215	1	5	STR	15'-9"	16	K4	36	4	STR	8'-11"	166
* A116	1	5	STR	12'-1"	13	A216	1	5	STR	12'-1"	13	K5	1	4	STR	1'-1"	1
* A117	1	5	STR	8'-6"	9	A217	1	5	STR	8'-6"	9	K6	5	4	STR	2'-5"	8
* A118	1	5	STR	4'-10"	5	A218	1	5	STR	4'-10"	5	K7	1	4	STR	1'-8"	1
												K8	1	4	STR	1'-5"	1
* A120	6	5	STR	45'-5"	284	A220	6	5	STR	45'-3"	283	K9	5	4	STR	2'-9"	9
* A121	6	5	STR	40'-1"	251	A221	6	5	STR	39'-11"	250	K10	1	4	STR	2'-0"	1
* A122	6	5	STR	34'-9"	217	A222	6	5	STR	34'-7"	216	K11	1	4	STR	1'-11"	1
* A123	1	5	STR	56'-5"	59	A223	1	5	STR	56'-5"	59	K12	5	4	STR	3'-4"	11
* A124	1	5	STR	52'-10"	55	A224	1	5	STR	52'-10"	55	K13	1	4	STR	2'-6"	2
* A125	1	5	STR	49'-3"	51	A225	1	5	STR	49'-3"	51	K14	1	4	STR	2'-2"	1
* A126	1	5	STR	45'-8"	48	A226	1	5	STR	45'-8"	48	K15	5	4	STR	3'-7"	12
* A127	1	5	STR	42'-2"	44	A227	1	5	STR	42'-2"	44	K16	1	4	STR	2'-9"	2
* A128	1	5	STR	38'-7"	40	A228	1	5	STR	38'-7"	40	K17	21	4	STR	30'-7"	429
* A129	1	5	STR	35'-0"	37	A229	1	5	STR	35'-0"	37						
* A130	1	5	STR	31'-6"	33	A230	1	5	STR	31'-6"	33	* S1	116	4	1	11'-11"	923
* A131	1	5	STR	27'-11"	29	A231	1	5	STR	27'-11"	29	* S2	114	4	1	12'-3"	933
* A132	1	5	STR	24'-4"	25	A232	1	5	STR	24'-4"	25	S3	116	4	2	15'-4"	1188
* A133	1	5	STR	20'-10"	22	A233	1	5	STR	20'-10"	22	S4	414	4	3	2'-9"	761
* A134	1	5	STR	17'-3"	18	A234	1	5	STR	17'-3"	18						
* A135	1	5	STR	13'-8"	14	A235	1	5	STR	13'-8"	14	U1	18	4	5	10'-1"	121
* A136	1	5	STR	10'-2"	11	A236	1	5	STR	10'-2"	11	U2	54	4	4	17'-11"	646
* A137	1	5	STR	6'-7"	7	A237	1	5	STR	6'-7"	7						
* A138	1	5	STR	3'-0"	3	A238	1	5	STR	3'-0"	3						

REINFORCING STEEL = 63,193 LBS.
* EPOXY COATED REINFORCING STEEL = 60,770 LBS.



POUR SEQUENCE



OPTIONAL POUR SEQUENCE

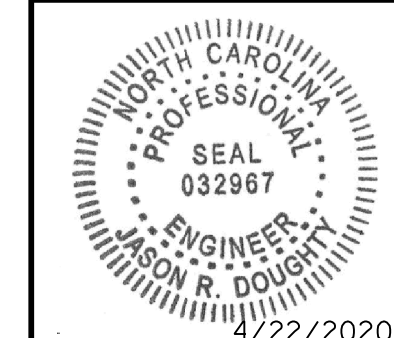
SUPERSTRUCTURE BILL OF MATERIAL			
	CLASS AA CONCRETE (CU. YDS.)	REINFORCING STEEL (LBS.)	EPOXY COATED REINFORCING STEEL (LBS.)
POUR #1	240.4	63,192	60,768
POUR #2	202.2		
POUR #3	236.5		
POUR #4	96.9		
TOTALS **	776.0	63,192	60,768

** QUANTITIES FOR RAILS ARE NOT INCLUDED.

GROOVING BRIDGE FLOORS		
APPROACH SLABS		3,964 SQ. FT.
BRIDGE DECK		18,614 SQ. FT.
TOTAL		22,578 SQ. FT.

PROJECT NO. R-2233BB
RUTHERFORD COUNTY
STATION: 26+65.52 -Y3-

STATE OF NORTH CAROLINA
DEPARTMENT OF TRANSPORTATION
RALEIGH
STANDARD
SUPERSTRUCTURE
BILL OF MATERIAL



MODJESKI and MASTERS
Experience great bridges.
333 FAYETTEVILLE STREET, SUITE 500
RALEIGH, NC 27601
NC LICENSE NO. C-2979

DOCUMENT NOT CONSIDERED FINAL UNLESS ALL SIGNATURES COMPLETED

REVISIONS						SHEET NO.
NO.	BY:	DATE:	NO.	BY:	DATE:	
1			3			S4-31
2			4			TOTAL SHEETS 45

STR. #4 STD. NO. BOM2

DESIGNED BY: A. DUTTA DATE: SEPT 2019
DRAWN BY: K. WHITE DATE: MAY 2019
CHECKED BY: B. LOFLIN DATE: NOV 2019
DESIGN ENGINEER OF RECORD: J. DOUGHTY DATE: NOV 2019

DRAWN BY: JMB 5/87 REV. 10/1/11 MAA/GM
CHECKED BY: SJD 9/87 REV. 12/17 MAA/THC
REV. 06/19 BNB/THC