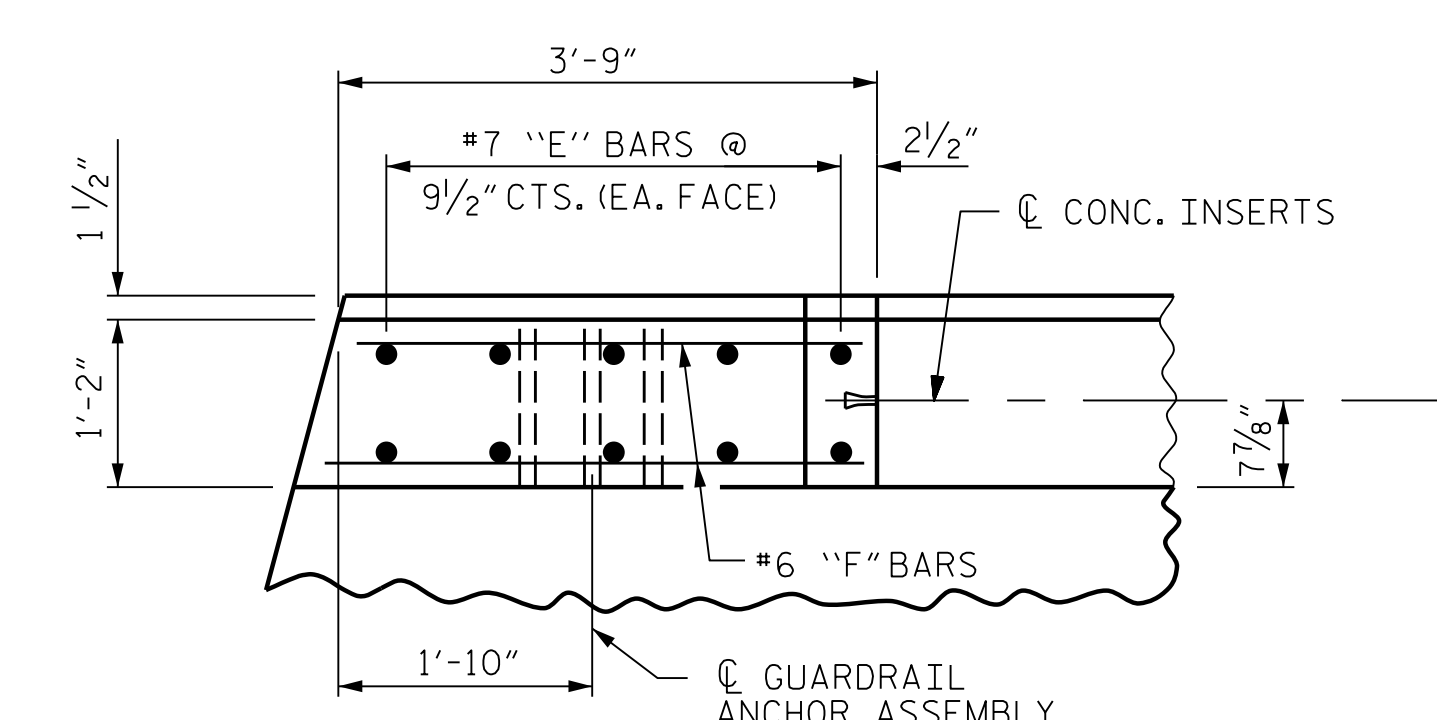
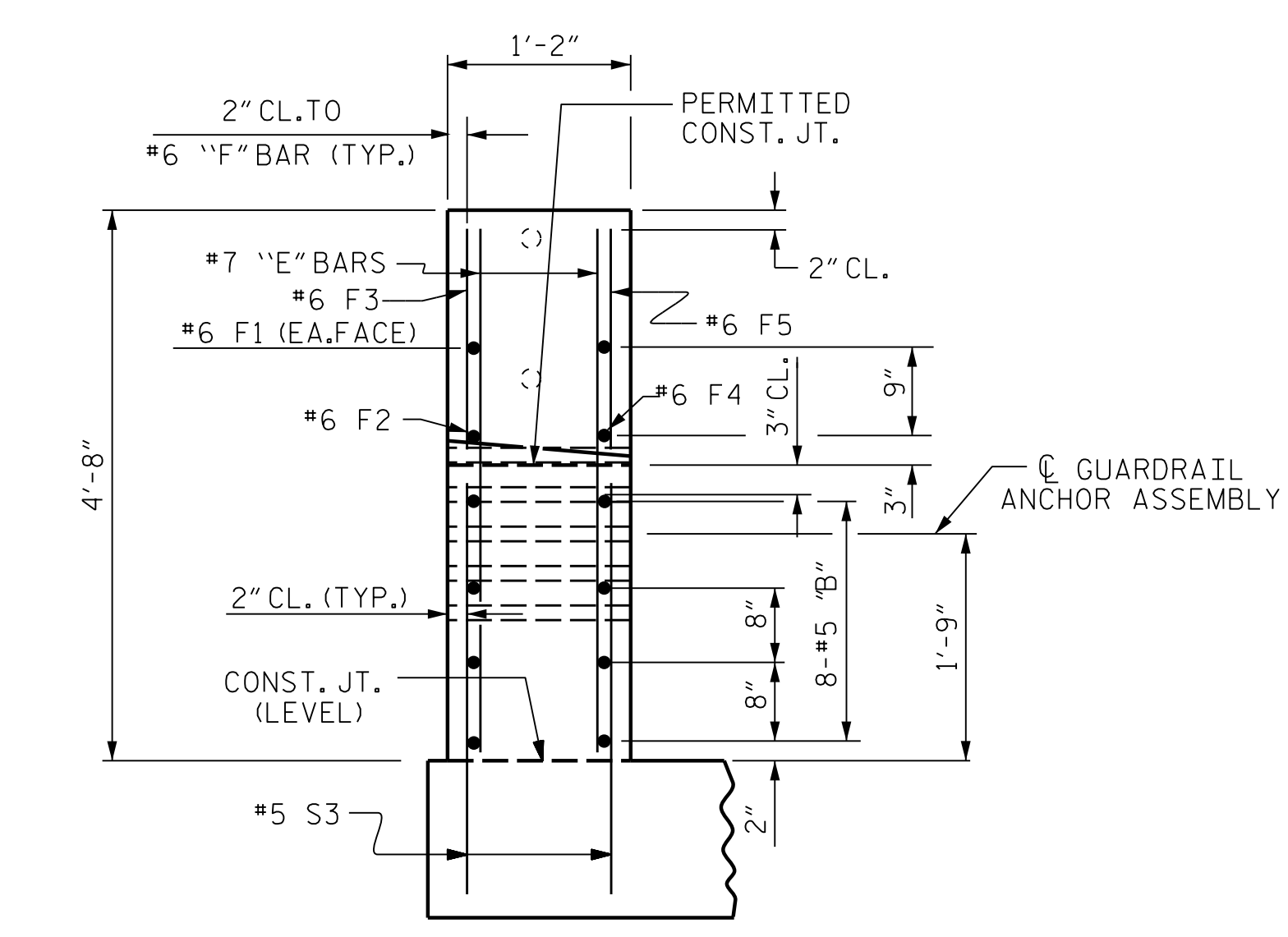


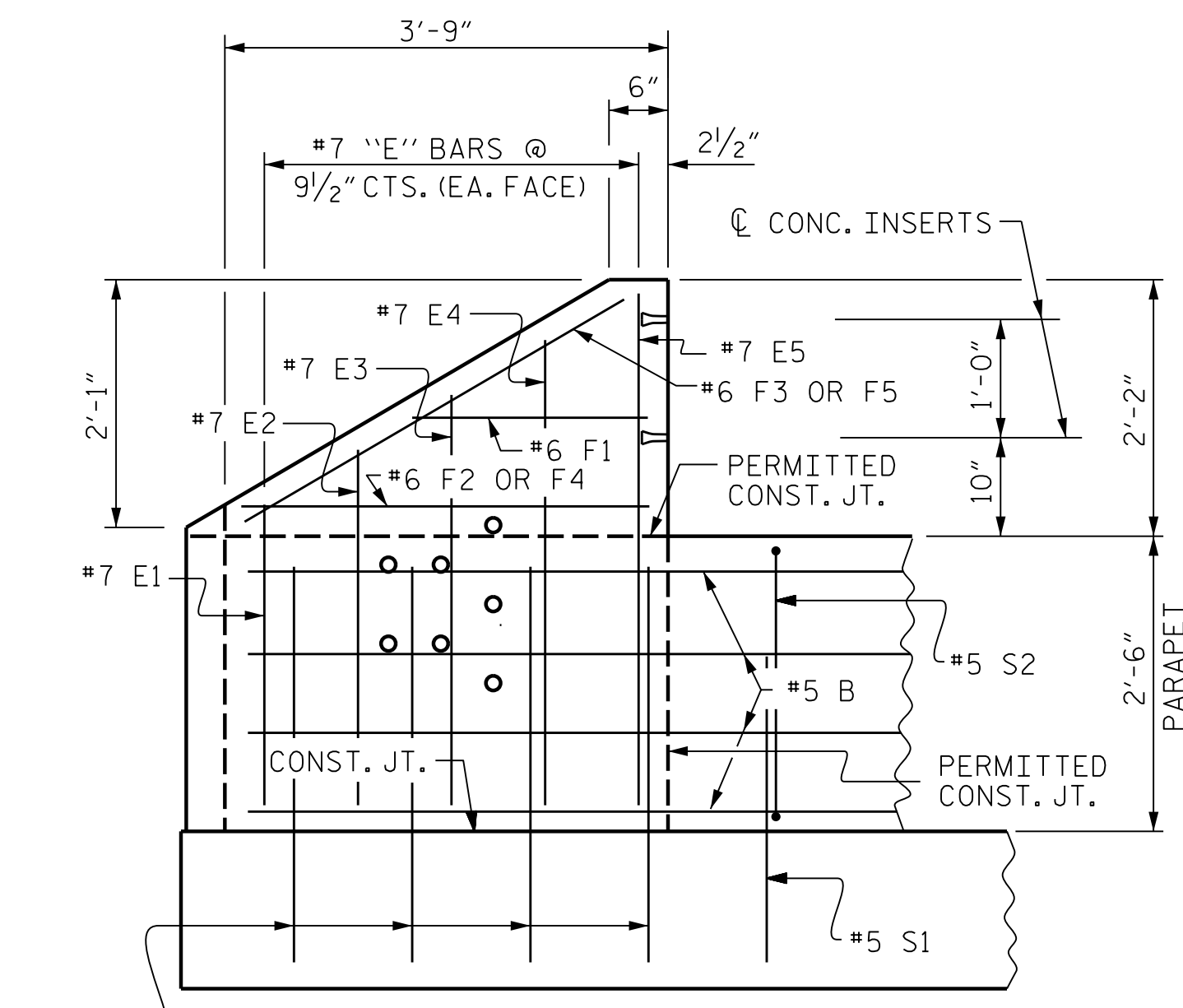
PLAN OF PARAPET



PLAN OF END POST

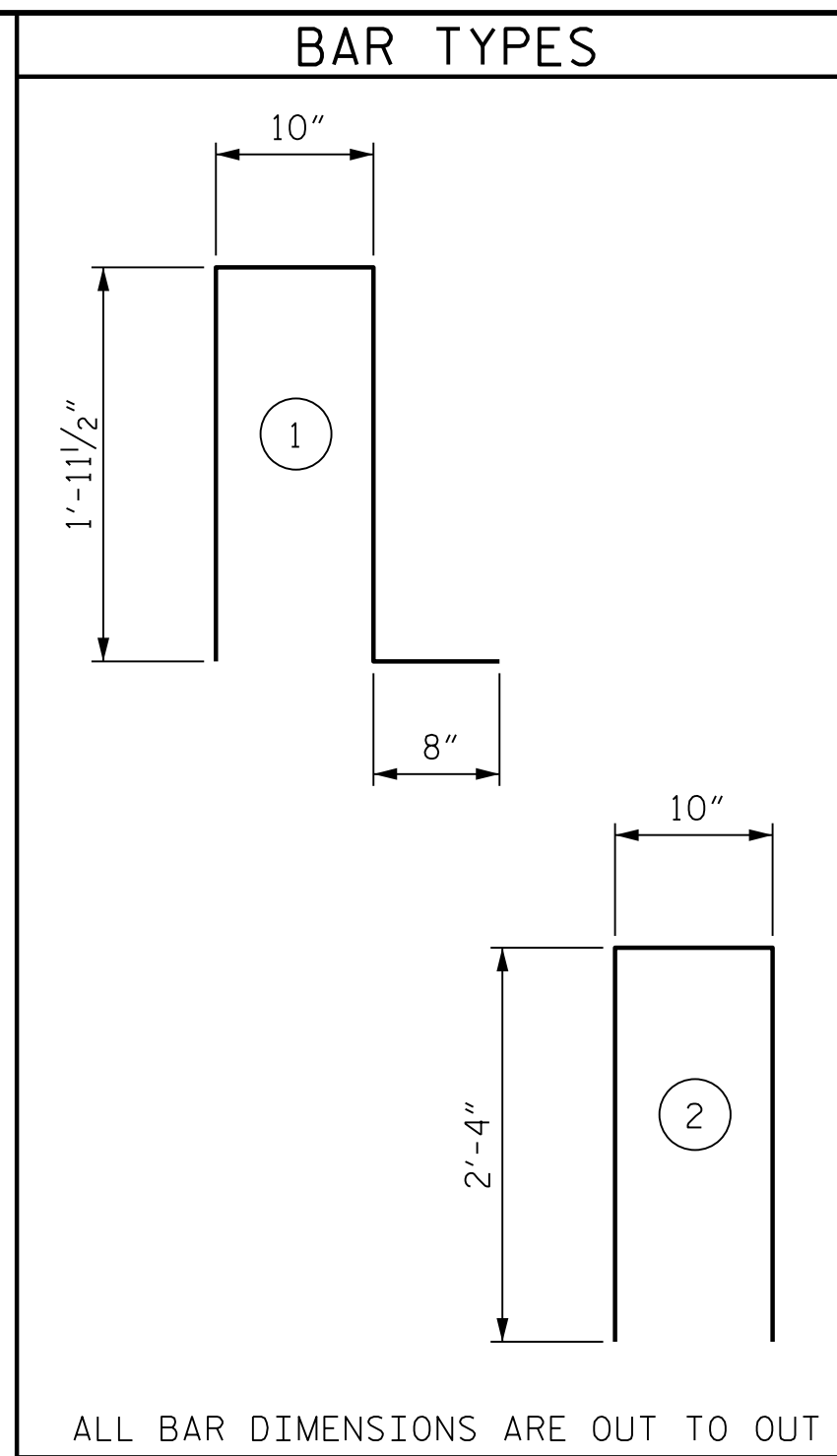


END VIEW



ELEVATION

PARAPET AND END POST FOR TWO BAR RAIL

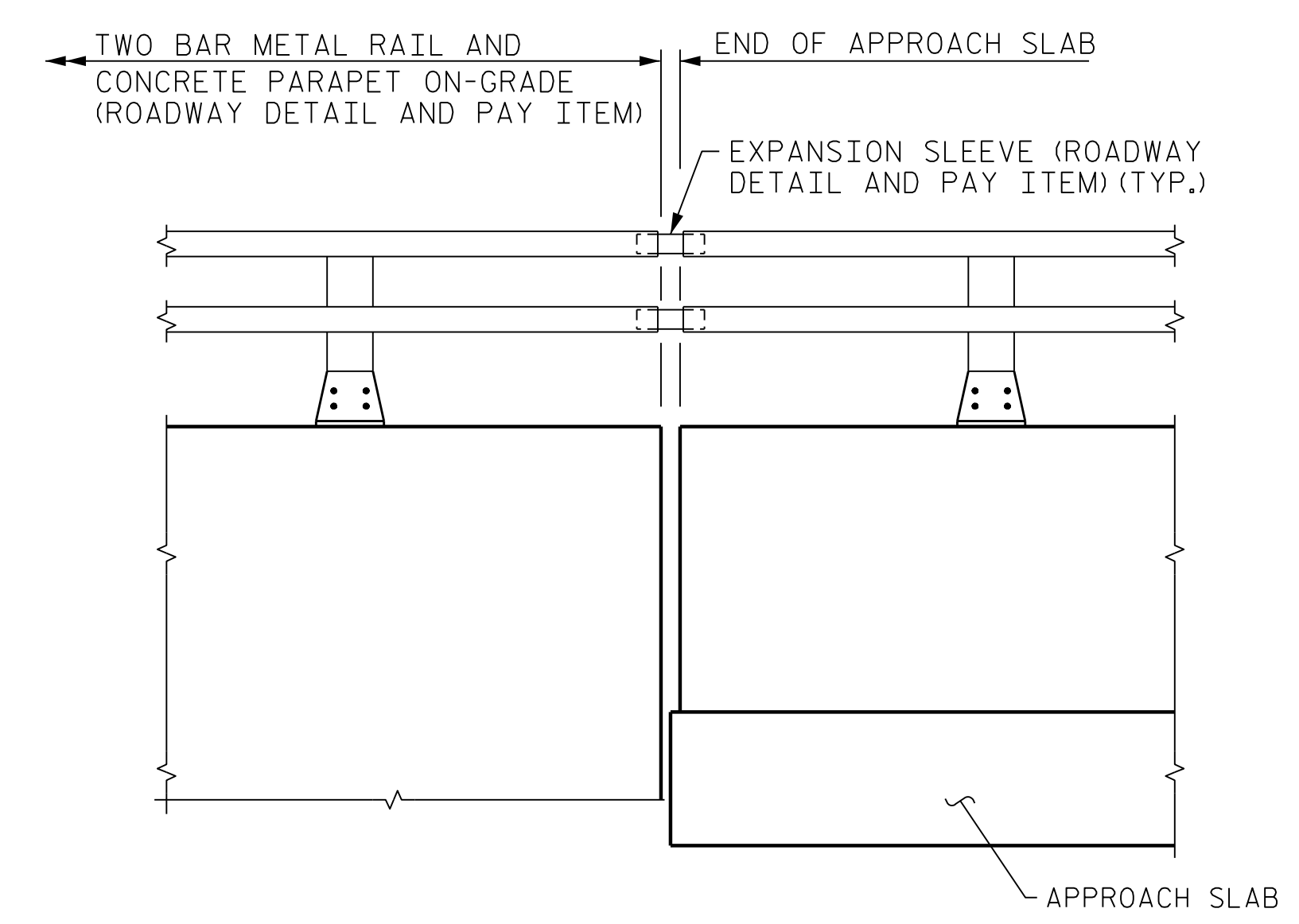


BILL OF MATERIAL						
FOR 2 PARAPETS AND 2 END POSTS						
BAR	NO.	SIZE	TYPE	LENGTH	WEIGHT	
*B1	8	#5	STR	19'-6"	163	
*B2	112	#5	STR	25'-7"	2989	
*B3	8	#5	STR	19'-9"	165	
*B4	32	#5	STR	24'-6"	818	
*E1	4	#7	STR	2'-6"	20	
*E2	4	#7	STR	3'-0"	25	
*E3	4	#7	STR	3'-6"	29	
*E4	4	#7	STR	4'-0"	33	
*E5	4	#7	STR	4'-5"	36	
*F1	4	#6	STR	2'-0"	12	
*F2	2	#6	STR	3'-4"	10	
*F3	2	#6	STR	3'-9"	11	
*F4	2	#6	STR	3'-3"	10	
*F5	2	#6	STR	3'-8"	11	
*S1	446	#5	1	5'-5"	2520	
*S2	446	#5	2	5'-6"	2558	
*S3	16	#5	STR	3'-0"	50	
* EPOXY COATED REINFORCING STEEL				9,460 LBS.		
CLASS AA CONCRETE				54.8 CU. YDS.		
1'-2" X 2'-6" CONCRETE PARAPET				504.55 LIN. FT.		

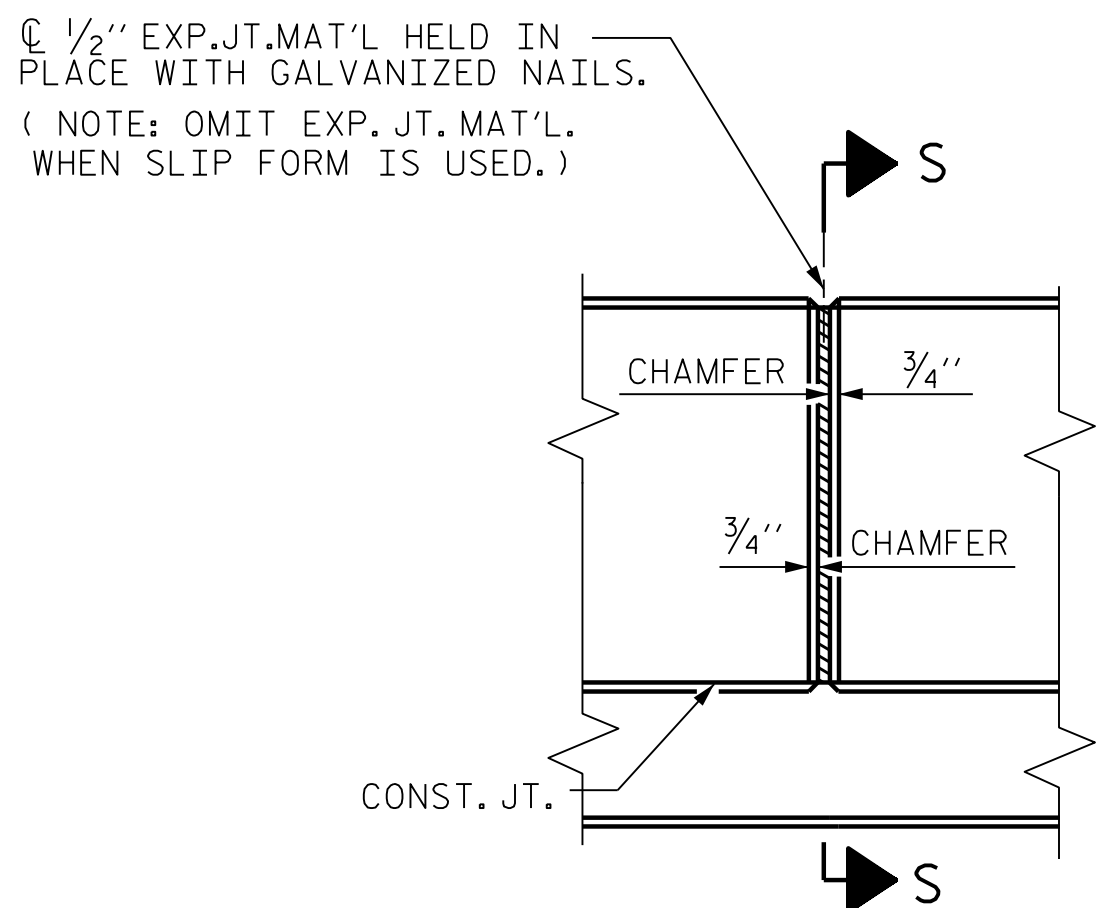
NOTES:

ALL REINFORCING STEEL IN PARAPETS AND END POSTS SHALL BE EPOXY COATED.

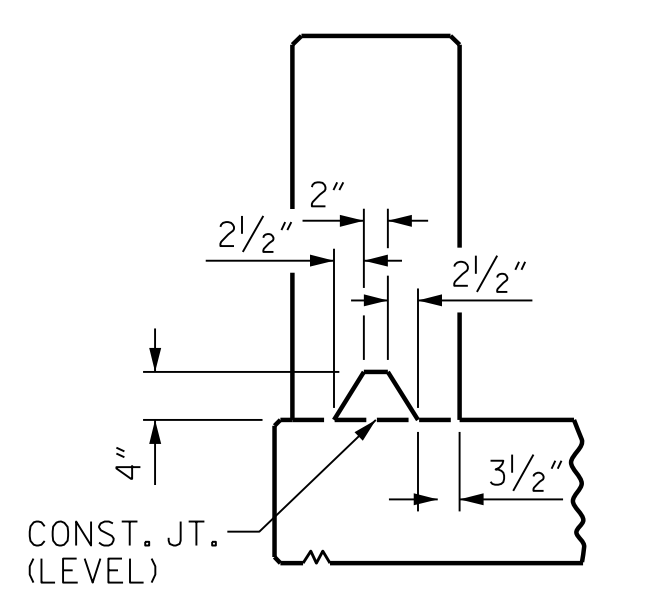
PARAPET IN A CONTINUOUS UNIT SHALL NOT BE CAST UNTIL ALL SLAB CONCRETE IN THE UNIT HAS BEEN CAST AND HAS REACHED A MINIMUM COMPRESSIVE STRENGTH OF 3,000 PSI.



END OF RAIL AND CONCRETE PARAPET DETAIL - RIGHT SIDE



ELEVATION AT EXPANSION JOINTS



SECTION S-S

AT DAM IN OPEN JOINT (THIS IS TO BE USED ONLY WHEN SLIP FORM IS USED)

DESIGNED BY: C. CORMAN	DATE: JULY 2019
DRAWN BY: K. WHITE	DATE: JULY 2019
CHECKED BY: B. LOFLIN	DATE: AUG 2019
DESIGN ENGINEER OF RECORD: J. DOUGHTY	DATE: NOV 2019

MODJESKI and MASTERS
Experience great bridges.

333 FAYETTEVILLE STREET, SUITE 500
RALEIGH, NC 27601
NC LICENSE NO. C-2979

DocuSigned by:
Jason R. Doughty
SF73FA2DEA874E8...

PROJECT NO. R-2233BB
RUTHERFORD COUNTY
STATION: 26+65.52 -Y3-
SHEET 2 OF 2

REVISIONS						SHEET NO.
NO.	BY:	DATE:	NO.	BY:	DATE:	S4-23
1			3			TOTAL SHEETS 45
2			4			

DOCUMENT NOT CONSIDERED FINAL UNLESS ALL SIGNATURES COMPLETED