

PLAN @ END BENT 1 **PLAN @ END BENT 2**
 DIMENSIONS SHOWN ARE TYPICAL FOR BOTH APPROACH SLABS
 SEE SHEET 3 OF 3 FOR SIDEWALK DETAILS

NOTES

APPROACH SLAB SHALL NOT BE CONSTRUCTED PRIOR TO COMPLETION OF THE BRIDGE DECK.

FOR BRIDGE APPROACH FILL INCLUDING GEOTEXTILE, 6" Ø DRAINAGE PIPE, AND SELECT MATERIAL, SEE ROADWAY PLANS.

GEOTEXTILE SHALL BE TYPE 1 IN ACCORDANCE WITH THE STANDARD SPECIFICATIONS SECTION 1056.

SELECT MATERIAL BACKFILL (CLASS V OR CLASS VI) SHALL BE IN ACCORDANCE WITH STANDARD SPECIFICATIONS SECTION 1016.

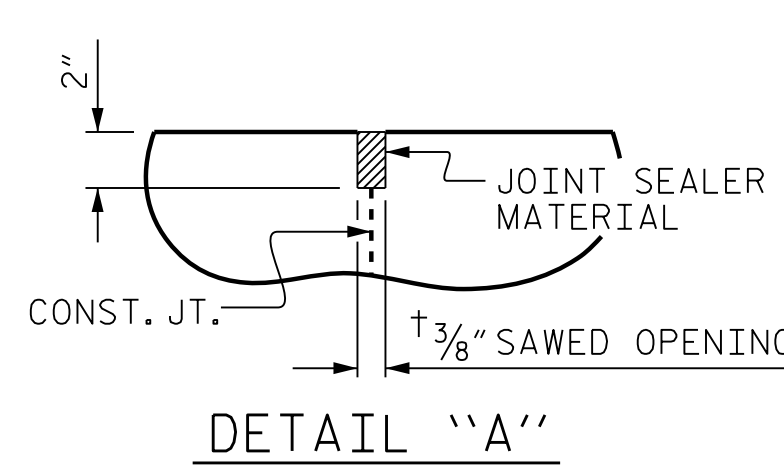
SELECT MATERIAL BACKFILL IS TO BE CONTINUOUS ALONG FILL FACE OF BACKWALL FROM OUTSIDE EDGE TO OUTSIDE EDGE OF APPROACH SLAB.

FOR THE 6" Ø DRAINAGE PIPE OUTLET(S), SEE ROADWAY STANDARD DRAWINGS.

AREA BETWEEN THE WINGWALL AND APPROACH SLAB SHALL BE GRADED TO DRAIN THE WATER AWAY FROM THE FILL FACE OF THE BRIDGE AND SHALL BE PAVED. SEE ROADWAY PLANS.

THE JOINT OPENING AT THE APPROACH SLAB/DECK INTERFACE SHALL BE SAWED NO MORE THAN 12 HOURS AFTER THE APPROACH SLAB IS CAST. THE JOINT SHALL BE CLEANED OF ALL DEBRIS BEFORE THE SEALANT IS APPLIED. THE JOINT SEALER MATERIAL SHALL CONFORM TO THE REQUIREMENTS OF SECTION 1028-3 OF THE STANDARD SPECIFICATIONS.

AT THE CONTRACTOR'S OPTION, "TYPE A - ALTERNATE APPROACH FILL" IN LIEU OF "TYPE I - STANDARD APPROACH FILL" MAY BE CONSTRUCTED AT NO ADDITIONAL COST TO THE DEPARTMENT. SEE SHEET 2 OF 3 FOR DETAILS AND NOTES.



DETAIL "A"

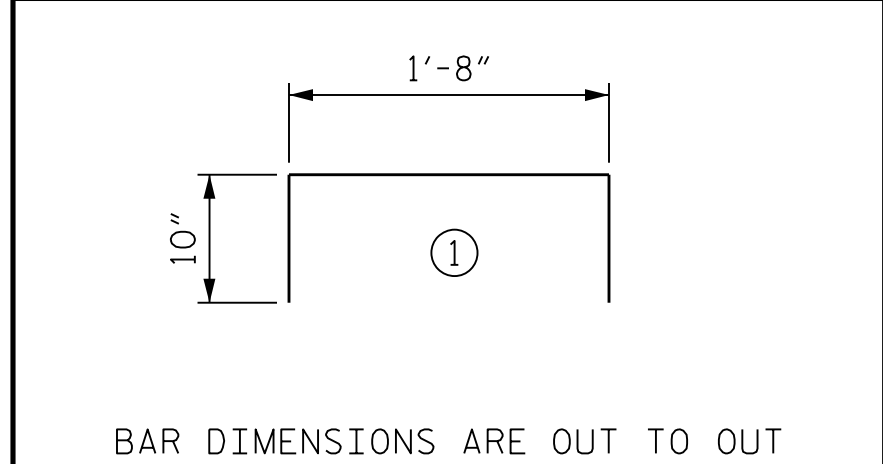
BILL OF MATERIAL

FOR ONE APPROACH SLAB
(2 REQ'D)

BAR	NO.	SIZE	TYPE	LENGTH	WEIGHT
* A1	32	#4	STR	22'-7"	483
A2	32	#4	STR	22'-5"	479
* B1	84	#5	STR	14'-0"	1227
B2	84	#6	STR	14'-6"	1829
* B3	10	#4	STR	14'-6"	97
* G1	15	#4	STR	5'-2"	52
* G2	15	#4	STR	8'-3"	83
* U1	15	#4	1	3'-4"	33

REINFORCING STEEL	LBS.	2308
* EPOXY COATED REINFORCING STEEL	LBS.	1975
CLASS AA CONCRETE	C. Y.	32.1

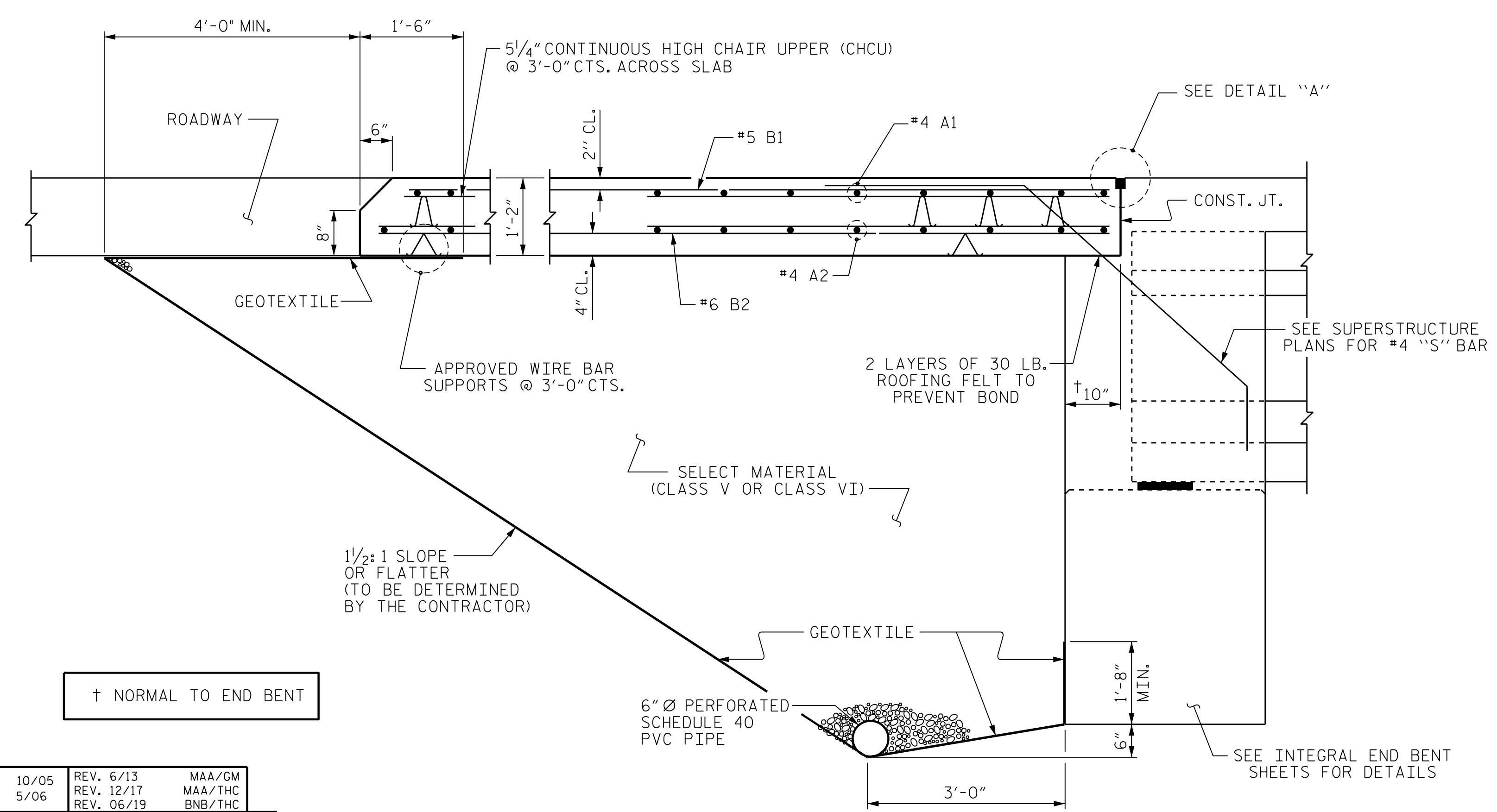
BAR TYPE



BAR DIMENSIONS ARE OUT TO OUT
 NOTE: SIDEWALK QUANTITIES INCLUDED IN BILL OF MATERIAL.

SPLICE LENGTHS

BAR SIZE	EPOXY COATED	UNCOATED
#4	1'-11"	1'-7"
#5	2'-5"	2'-0"
#6	3'-7"	2'-5"



SECTION THRU SLAB
 (TYPE I - STANDARD APPROACH FILL)

PROJECT NO. R-2233BB
RUTHERFORD COUNTY
 STATION: 20+88.94 -Y19-

SHEET 1 OF 3

STATE OF NORTH CAROLINA
 DEPARTMENT OF TRANSPORTATION
 RALEIGH

STANDARD
**BRIDGE APPROACH
 SLAB FOR INTEGRAL
 ABUTMENT**

REVISIONS					
NO.	BY:	DATE:	NO.	BY:	DATE:
1			3		
2			4		

SHEET NO. **S3-32**
 TOTAL SHEETS 34

STR. #3 STD. NO. BASS

MODJESKI and MASTERS
 Experience great bridges.

333 FAYETTEVILLE STREET, SUITE 500
 RALEIGH, NC 27601
 NC LICENSE NO. C-2979

DocuSigned by:
Jason R. Doughty
 5F73FA2DEA874E8...

**DOCUMENT NOT CONSIDERED FINAL
 UNLESS ALL SIGNATURES COMPLETED**

DESIGNED BY: <u>K. WHITE</u>	DATE: <u>MAY 2019</u>
DRAWN BY: <u>K. WHITE</u>	DATE: <u>MAR 2019</u>
CHECKED BY: <u>J. BORUTA</u>	DATE: <u>AUG 2019</u>
DESIGN ENGINEER OF RECORD: <u>J. DOUGHTY</u>	DATE: <u>NOV 2019</u>

4/22/2020
 403_063_R2233BB_SMLL.ASI_800662.dgn