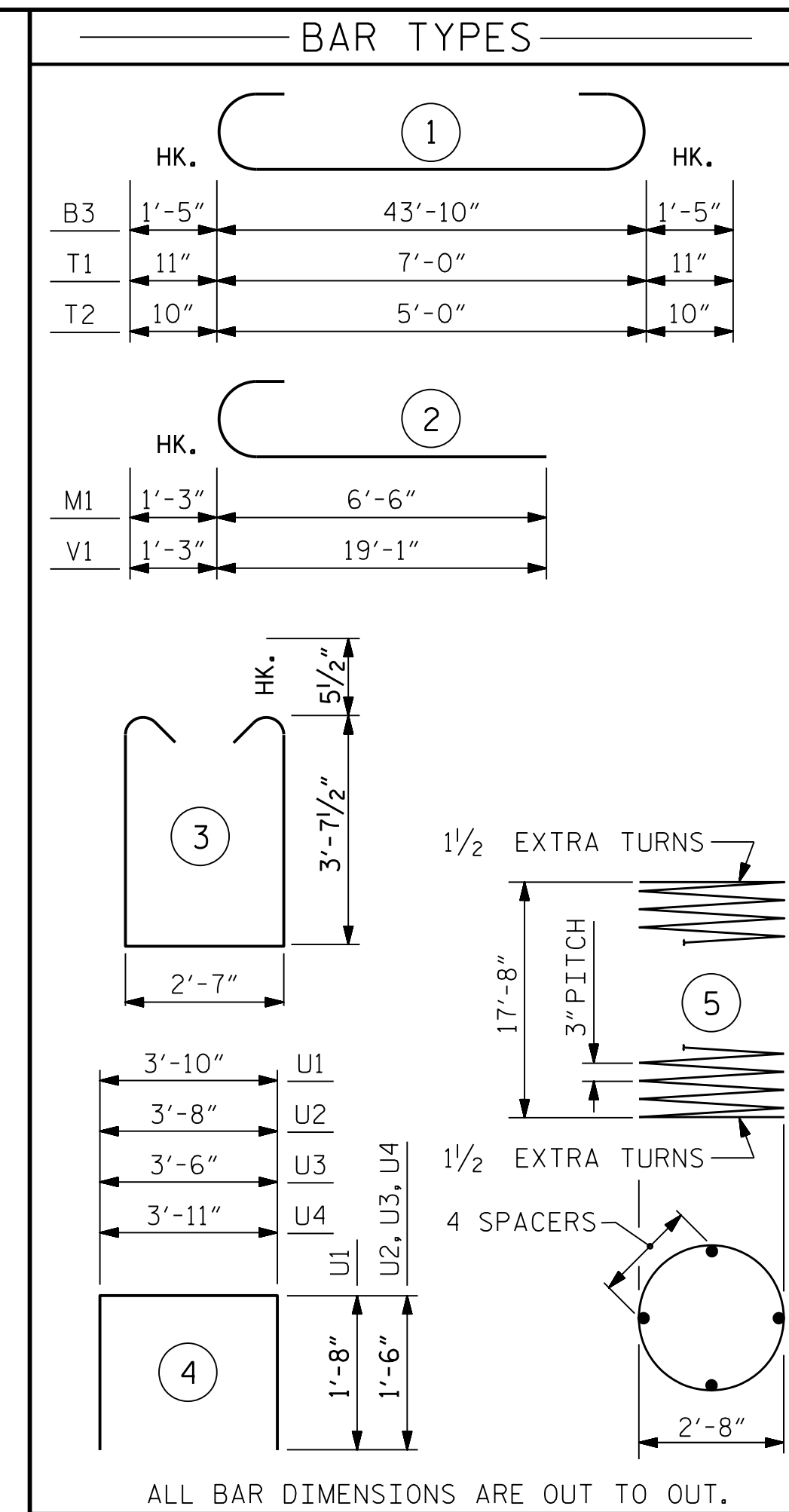
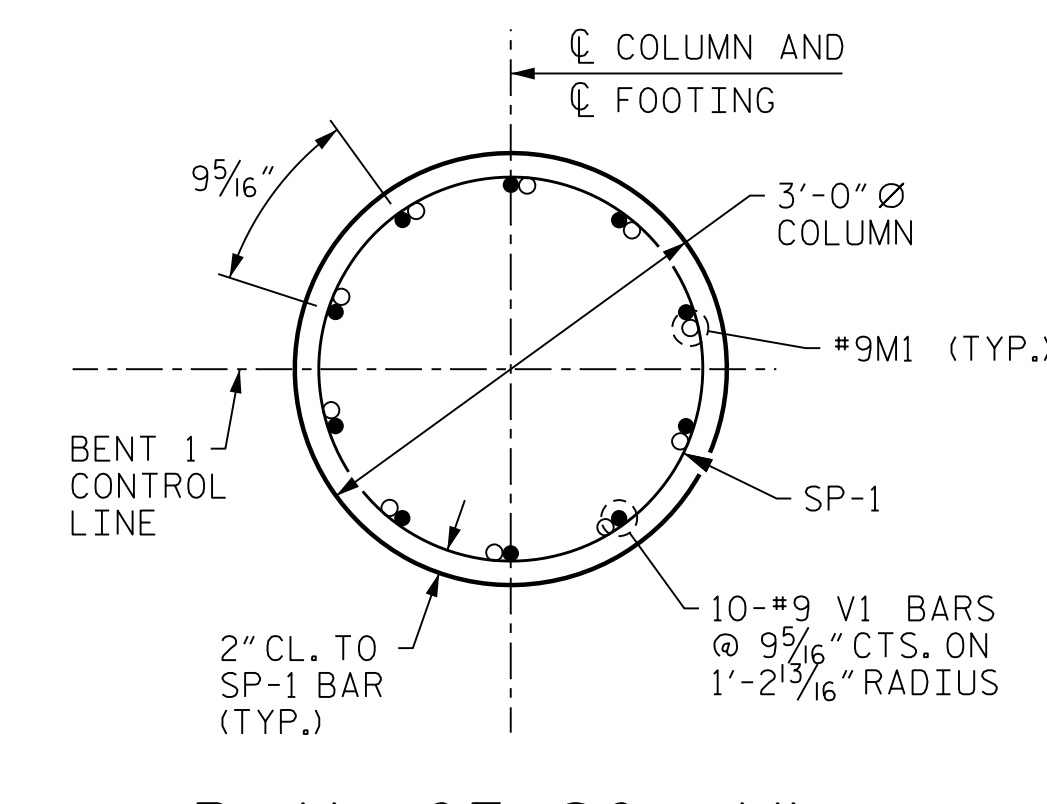
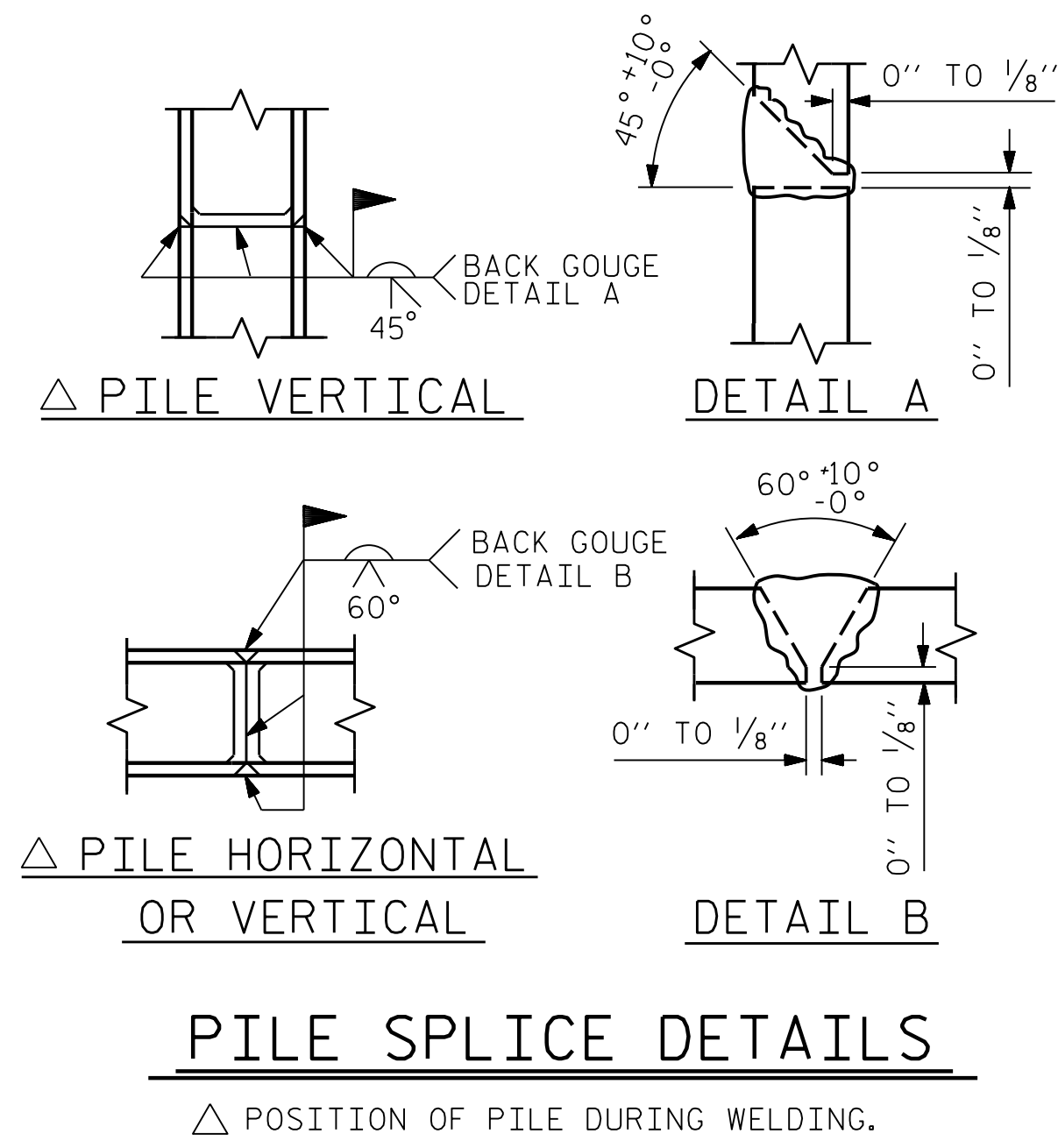


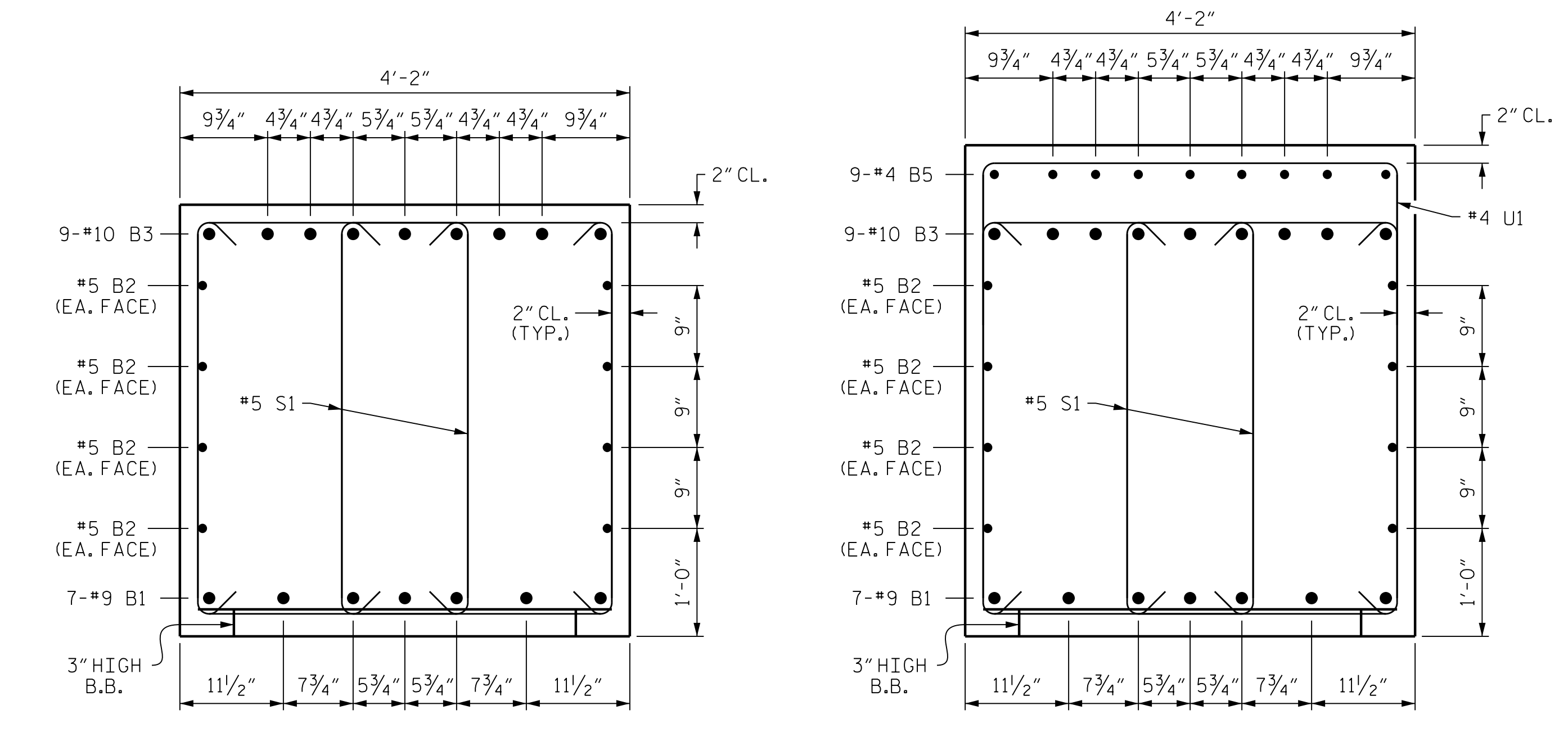
PLAN OF FOOTINGS AND COLUMNS
DIMENSIONS AND REINFORCING STEEL ARE TYPICAL FOR EACH FOOTING



BILL OF MATERIAL					
BAR	NUMBER	SIZE	TYPE	LENGTH	WEIGHT
B1	7	#9	STR	43'-10"	1043
B2	8	#5	STR	43'-10"	366
B3	9	#10	1	46'-8"	1807
B4	9	#4	STR	9'-6"	57
B5	9	#4	STR	14'-3"	86
B6	9	#4	STR	9'-4"	56
M1	30	#9	2	7'-9"	791
S1	96	#5	3	10'-9"	1076
T1	30	#8	1	8'-10"	708
T2	24	#7	1	6'-8"	327
T3	24	#6	STR	7'-0"	252
T4	27	#6	STR	5'-0"	203
U1	57	#4	4	7'-2"	273
U2	8	#4	4	6'-8"	36
U3	4	#4	4	6'-6"	17
U4	4	#4	4	6'-11"	18
V1	30	#9	2	20'-4"	2074
SP-1	3	*	5	610'-7"	1224
REINFORCING STEEL					LBS. 9,190
SPIRAL COLUMN REINFORCING STEEL					LBS. 1,224
CLASS "A" CONCRETE BREAKDOWN					
POUR #1 - FOOTINGS					14.9 C.Y.
POUR #2 - COLUMNS					13.7 C.Y.
POUR #3 - CAP					29.6 C.Y.
TOTAL CLASS "A" CONCRETE					58.2 C.Y.
HP 12 X 53 STEEL PILES					990 LIN. FT.
No. = 18					
PILE DRIVING EQUIPMENT					
SETUP FOR HP 12 X 53					
STEEL PILES					NO. 18

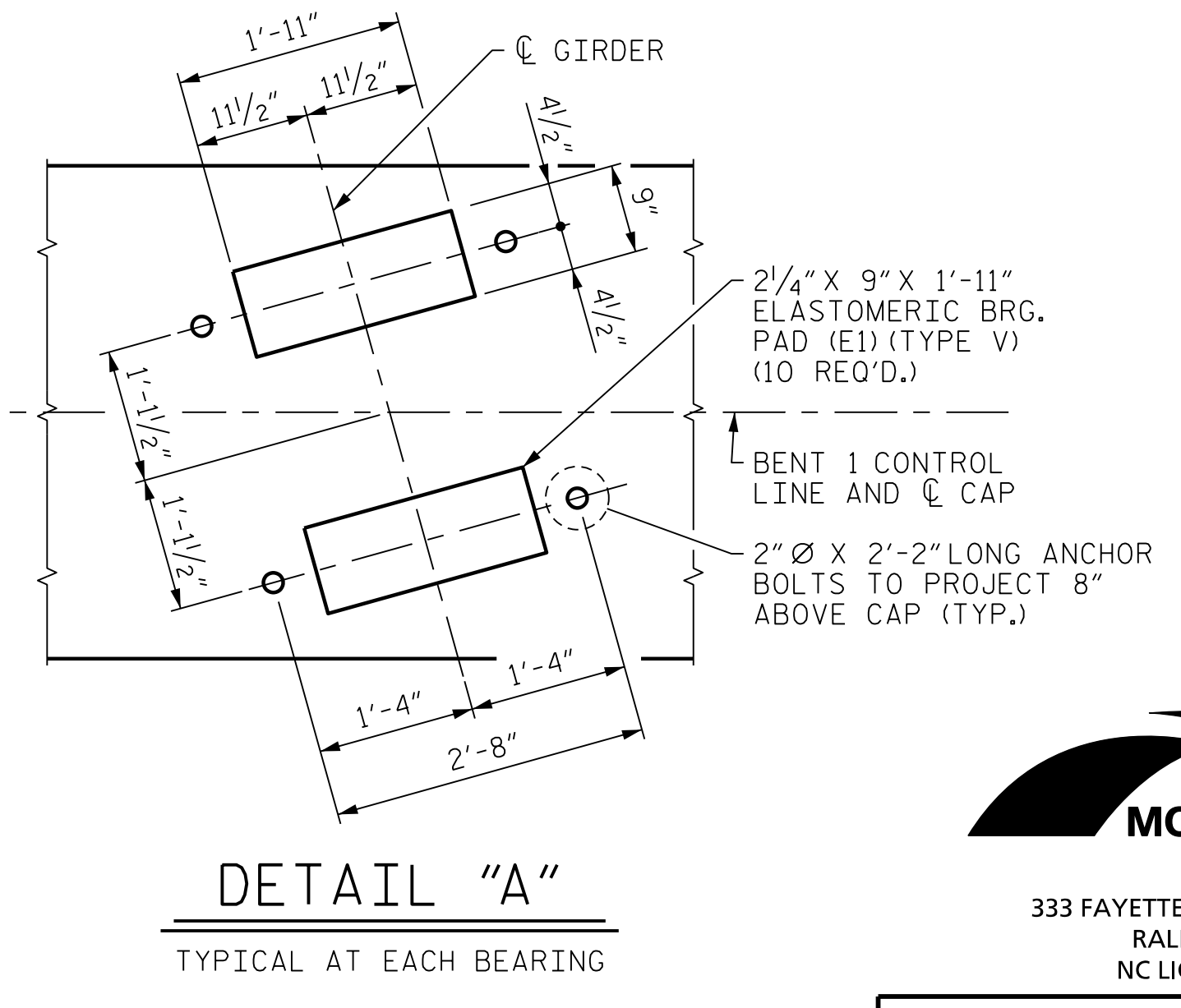


PLAN OF COLUMN
REINFORCING STEEL AND DIMENSIONS ARE TYPICAL FOR EACH COLUMN

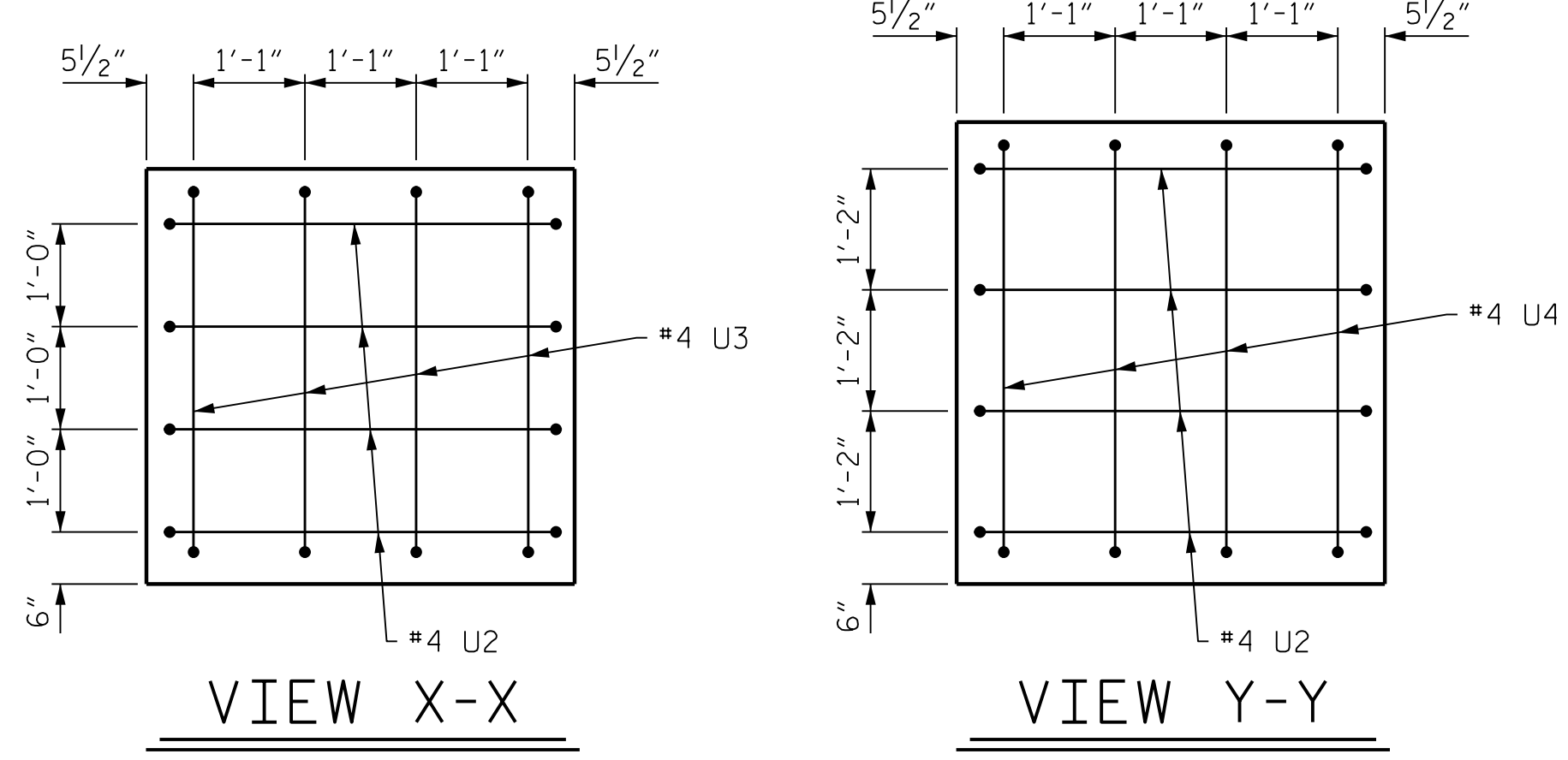


SECTION A-A

SECTION B-B



DETAIL "A"
TYPICAL AT EACH BEARING



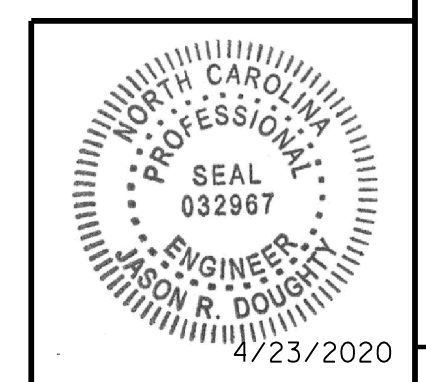
VIEW X-X

VIEW Y-Y

PROJECT NO. R-2233BB
RUTHERFORD COUNTY
STATION: 20+88.94 -Y19-
SHEET 2 OF 2

STATE OF NORTH CAROLINA DEPARTMENT OF TRANSPORTATION RALEIGH					
SUBSTRUCTURE BENT 1 DETAILS					
REVISIONS					
NO.	BY:	DATE:	NO.	BY:	DATE:
1			3		
2			4		

MODJESKI and MASTERS
Experience great bridges.
333 FAYETTEVILLE STREET, SUITE 500
RALEIGH, NC 27601
NC LICENSE NO. C-2979



DocuSigned by:
Jason R Doughty
5F73FA2DEA974E8...

**DOCUMENT NOT CONSIDERED FINAL
UNLESS ALL SIGNATURES COMPLETED**

STR. #3

4/22/2020
403_053_R2233BB_SML_B2_800662.dgn

DESIGNED BY: J. BORUTA DATE: JUNE 2019
DRAWN BY: K. WHITE DATE: JUNE 2019
CHECKED BY: B. LOFLIN DATE: JULY 2019
DESIGN ENGINEER OF RECORD: J. DOUGHTY DATE: NOV 2019