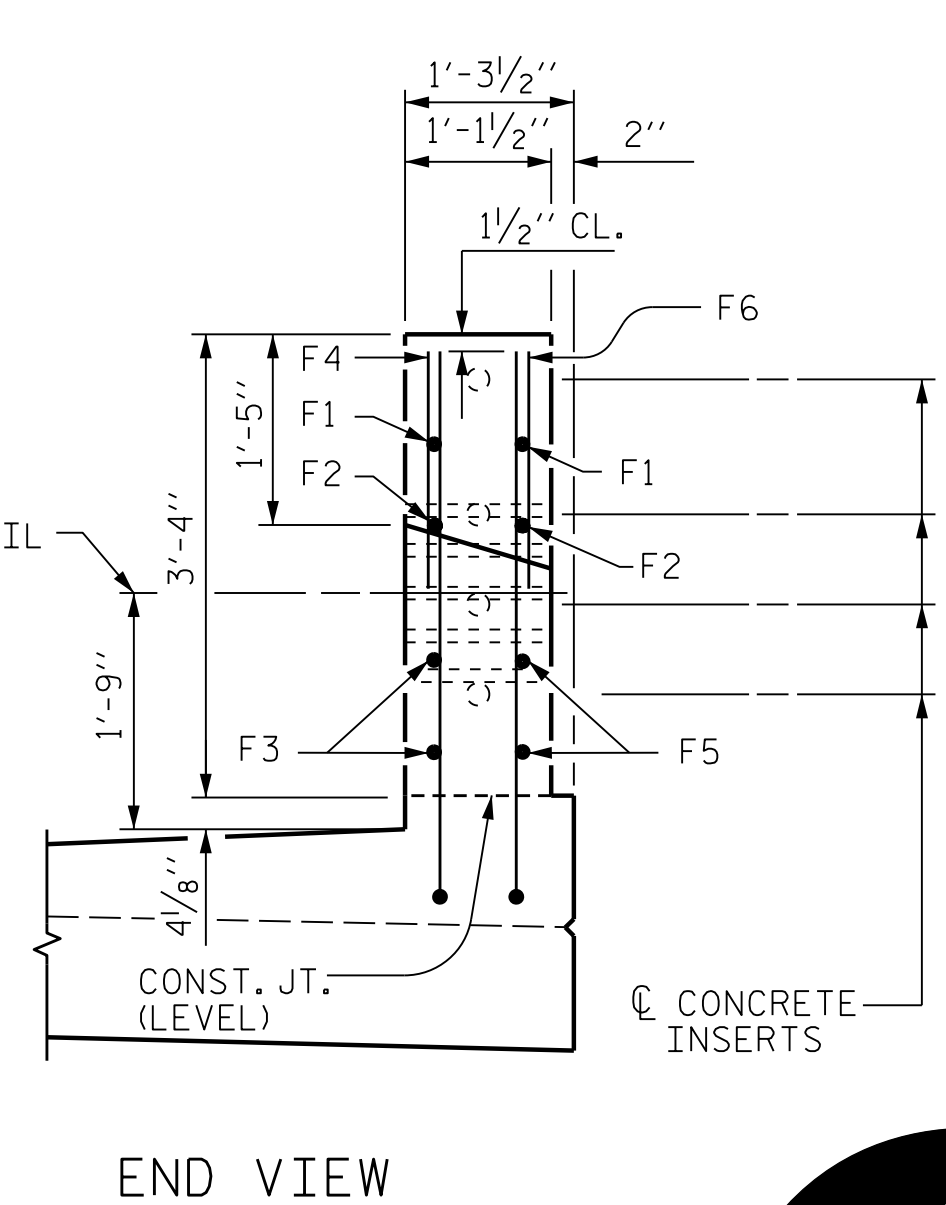
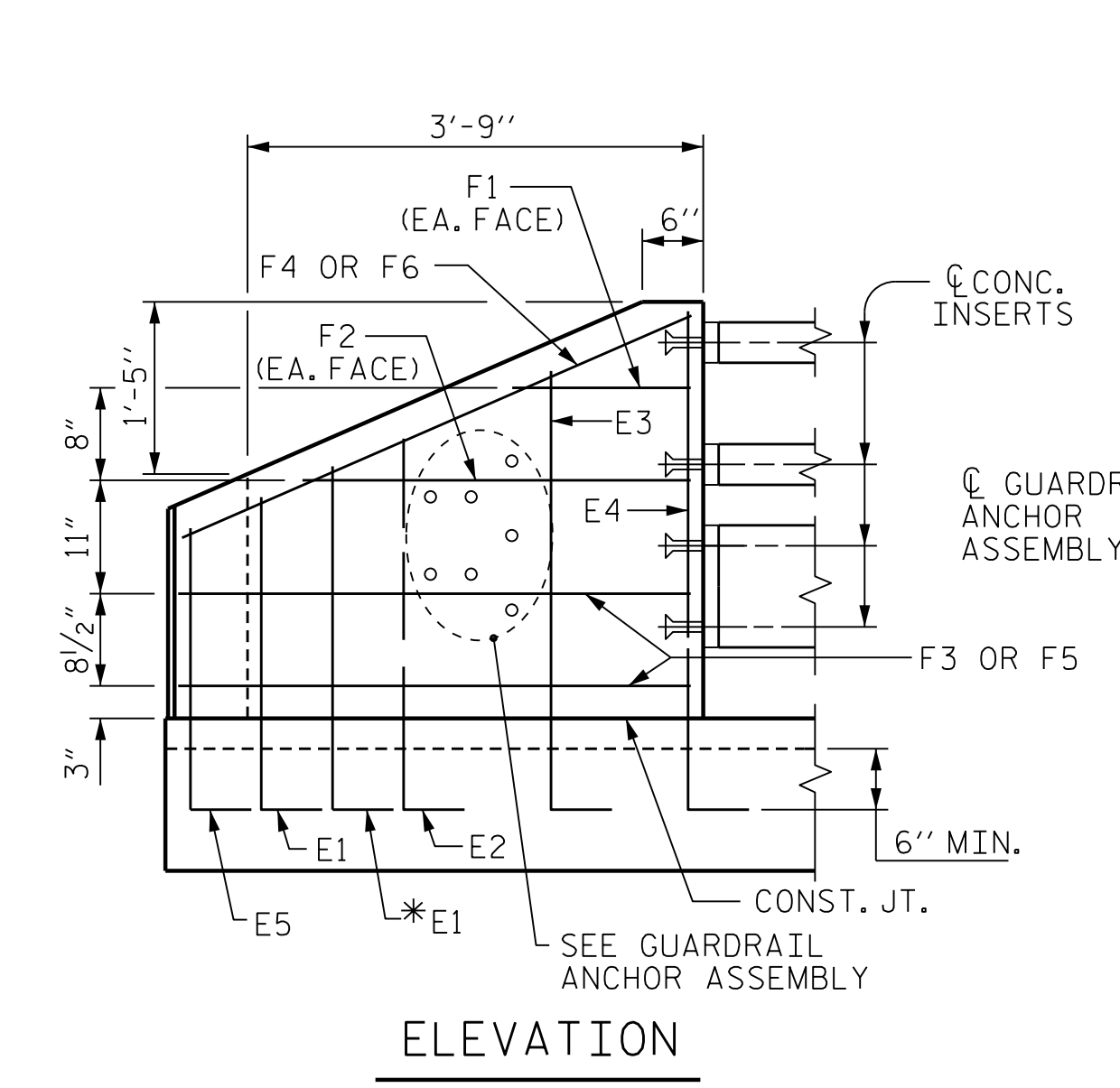
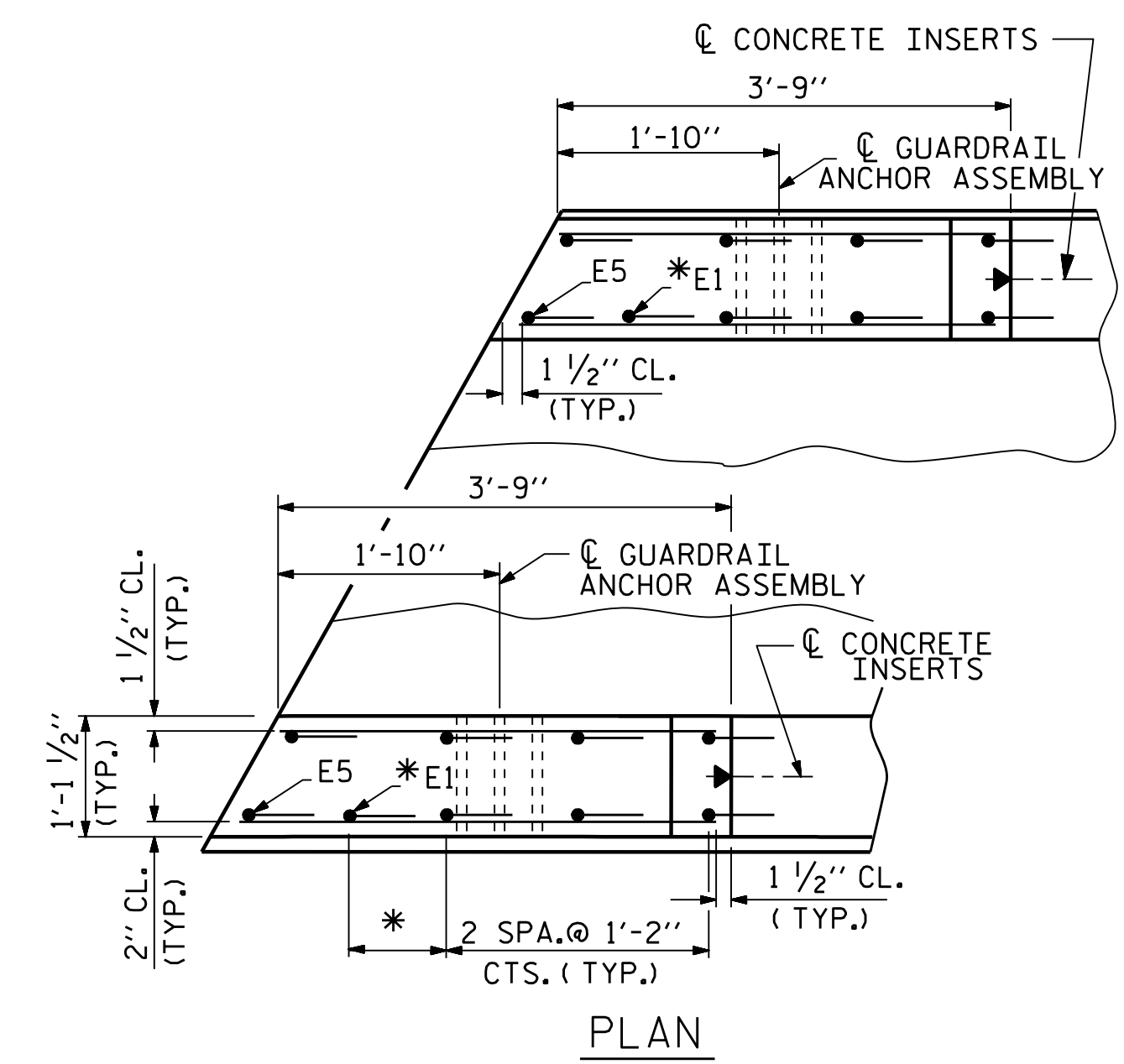


PLAN OF RAIL POST SPACING

FOR SIDEWALK DETAILS AND REINFORCING STEEL, SEE SIDEWALK DETAILS SHEET.



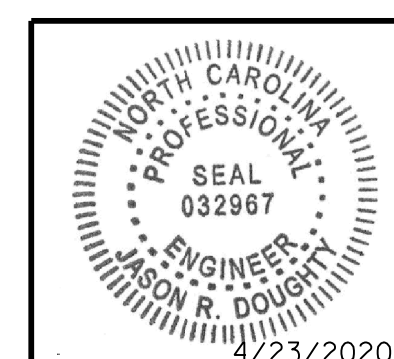
END POST DETAILS

* CENTER E1 BETWEEN E5 AND E2 IF E5 BAR IS NEEDED TO REINFORCE LONG CORNER.

BILL FOR ONE END POST					
BAR	NO.	SIZE	TYPE	WEIGHT (LBS)	
E1	2	#7	1	3'-5"	14
E2	2	#7	1	4'-0"	16
E3	2	#7	1	4'-7"	19
E4	2	#7	1	5'-0"	20
E5	1	#7	1	3'-3"	7
F1	2	#6	STR	1'-10"	6
F2	2	#6	STR	3'-6"	11
F3	2	#6	STR	3'-6"	11
F4	1	#6	STR	3'-9"	6
F5	2	#6	STR	3'-8"	11
F6	1	#6	STR	4'-0"	6
EPOXY COATED REINFORCING STEEL					127 LBS.
CLASS AA CONCRETE					0.43 CU. YDS.

PROJECT NO. R-2233BB
RUTHERFORD COUNTY
 STATION: 20+88.94 -Y19-

STATE OF NORTH CAROLINA
 DEPARTMENT OF TRANSPORTATION
 RALEIGH
 SUPERSTRUCTURE
RAIL POST SPACING AND END POST DETAILS



MODJESKI and MASTERS
 Experience great bridges.
 333 FAYETTEVILLE STREET, SUITE 500
 RALEIGH, NC 27601
 NC LICENSE NO. C-2979

DocuSigned by:
Jason R. Doughty
 SF73FA2DEA974E8...

REVISIONS						SHEET NO.
NO.	BY:	DATE:	NO.	BY:	DATE:	TOTAL SHEETS
1			3			34
2			4			

DOCUMENT NOT CONSIDERED FINAL UNLESS ALL SIGNATURES COMPLETED

DESIGNED BY: C. CORMAN/K. WHITE DATE: MAY 2019
 DRAWN BY: K. WHITE DATE: MAY 2019
 CHECKED BY: J. DOUGHTY DATE: JULY 2019
 DESIGN ENGINEER OF RECORD: J. DOUGHTY DATE: NOV 2019

4/22/2020
 403_039_R2233BB_SML_RFS_800662.dgn

STR. #3