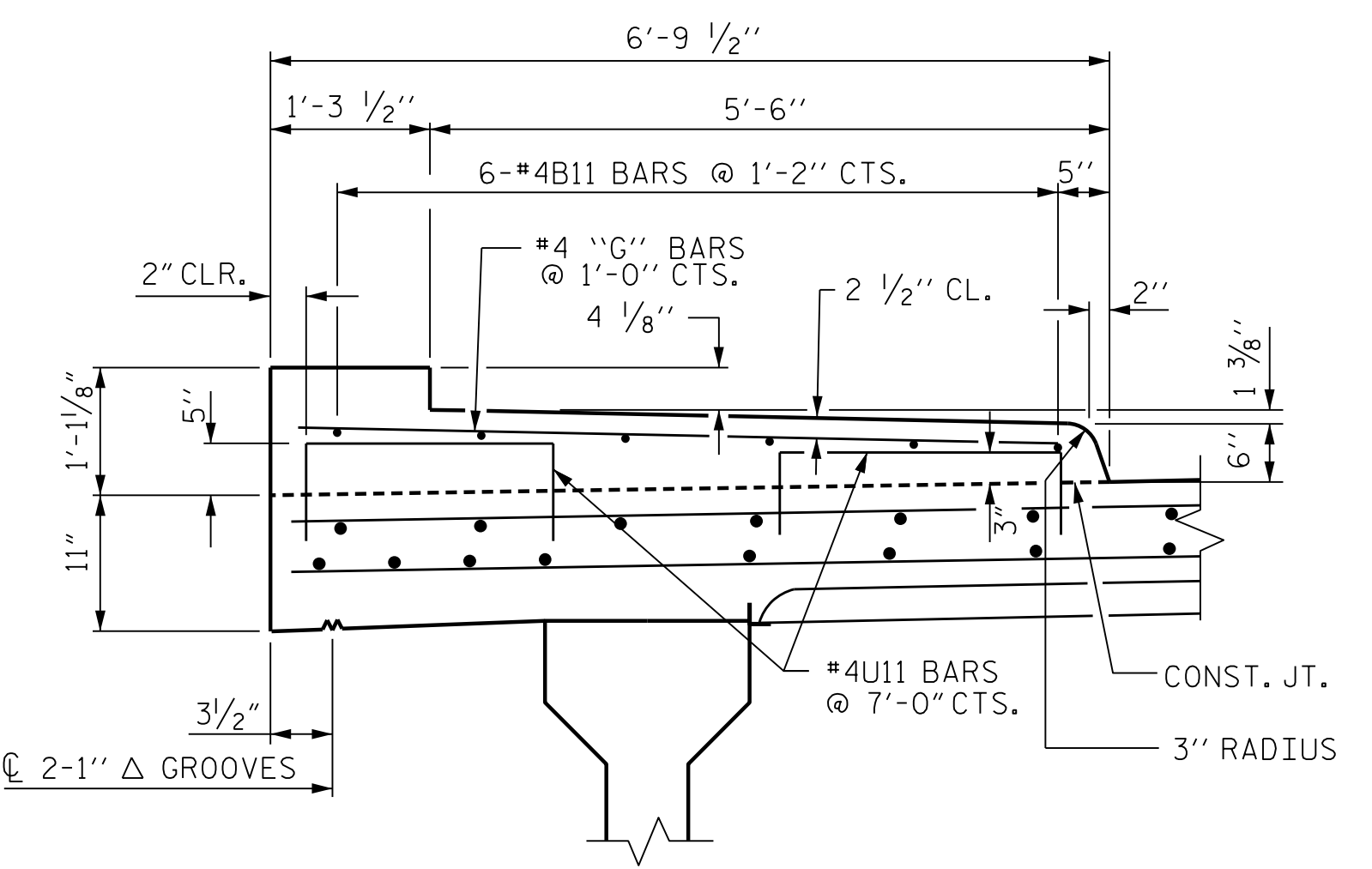
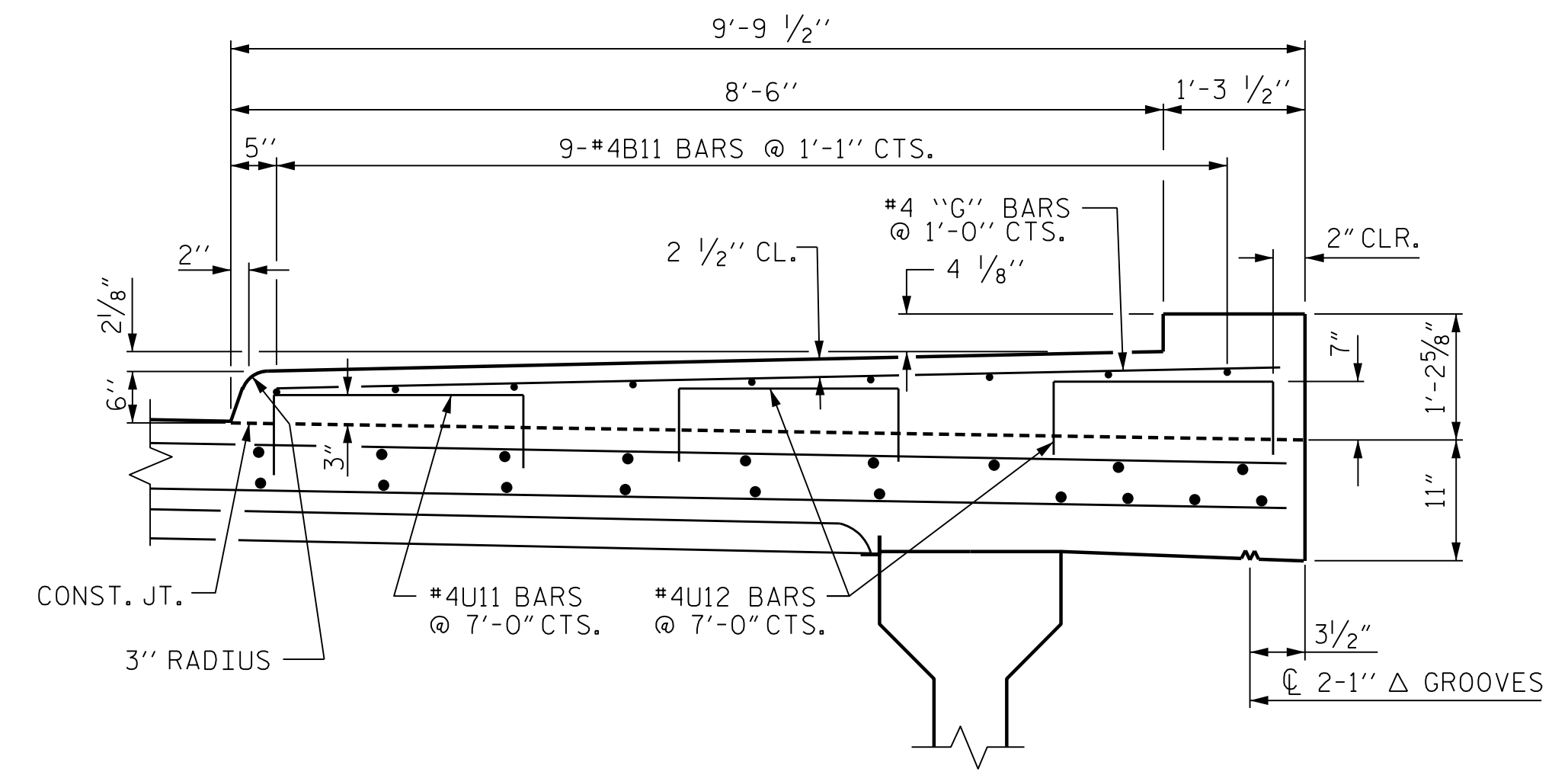


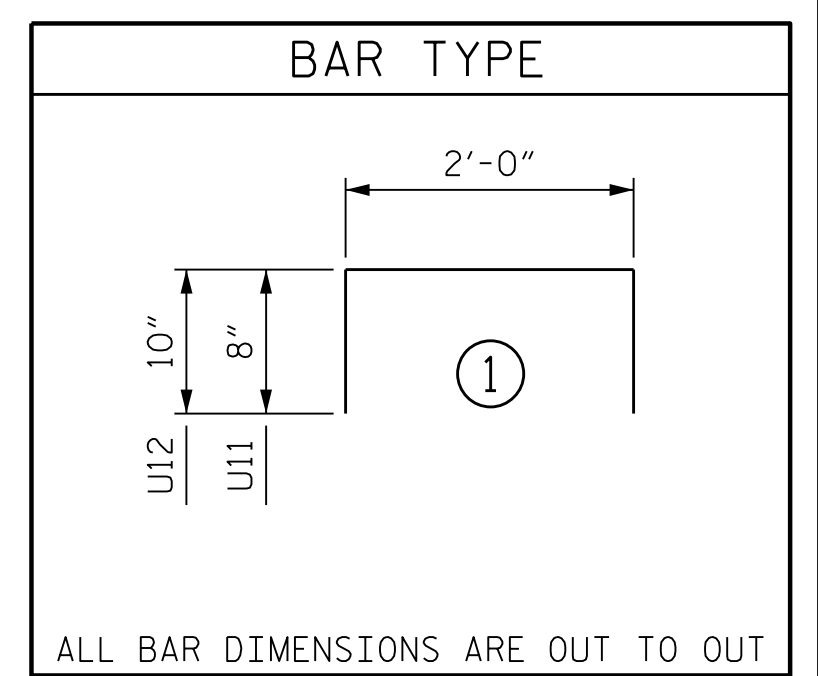
**PLAN OF SIDEWALKS**



**SECTION THRU LEFT SIDEWALK**  
(METAL RAIL NOT SHOWN)



**SECTION THRU RIGHT SIDEWALK**  
(METAL RAIL NOT SHOWN)



**BAR TYPE**

ALL BAR DIMENSIONS ARE OUT TO OUT

BILL OF MATERIAL					
BAR	NO.	SIZE	TYPE	LENGTH	WEIGHT
B11	105	4	STR	27'-4"	1917
G11	180	4	STR	6'-2"	742
G12	179	4	STR	9'-2"	1096
G13	2	4	STR	5'-5"	7
G14	4	4	STR	8'-5"	23
U11	84	4	1	3'-4"	187
U12	56	4	1	3'-8"	137

EPOXY COATED REINFORCING STEEL =	4109 LBS.
CLASS AA CONCRETE =	79.2 C.Y.

**NOTES:**

GROOVED CONTRACTION JOINTS 1/2" IN DEPTH, SHALL BE TOOLED IN ALL EXPOSED FACES OF THE SIDEWALK IN ACCORDANCE WITH ARTICLE 825-10(B) OF THE STANDARD SPECIFICATIONS. THE CONTRACTION JOINTS SHALL BE LOCATED AT A SPACING OF 8 FEET TO 10 FEET. NO CONTRACTION JOINTS WILL BE REQUIRED FOR SEGMENTS LESS THAN 10 FEET IN LENGTH. FOR GROOVED CONTRACTION JOINT LAYOUT, SEE "RAIL POST SPACING AND END POST DETAILS" SHEET.

ALL REINFORCING STEEL IN SIDEWALK SHALL BE EPOXY COATED.

THE SIDEWALK ON A CONTINUOUS UNIT SHALL NOT BE CAST UNTIL ALL CONCRETE IN THE UNIT HAS BEEN CAST AND HAS REACHED A MINIMUM COMPRESSIVE STRENGTH OF 3,000 PSI.

"U" BARS MAY BE PUSHED INTO GREEN CONCRETE AFTER SPAN HAS BEEN SCREED OFF.

PROJECT NO. R-2233BB  
RUTHERFORD COUNTY  
 STATION: 20+88.94 -Y19-

STATE OF NORTH CAROLINA  
 DEPARTMENT OF TRANSPORTATION  
 RALEIGH  
 SUPERSTRUCTURE  
**SIDEWALK DETAILS**

REVISIONS					
NO.	BY:	DATE:	NO.	BY:	DATE:
1			3		
2			4		

SHEET NO. **S3-10**  
 TOTAL SHEETS 34

DESIGNED BY: K. WHITE DATE: MAY 2019  
 DRAWN BY: K. WHITE DATE: MAR 2019  
 CHECKED BY: J. BORUTA DATE: JULY 2019  
 DESIGN ENGINEER OF RECORD: J. DOUGHTY DATE: NOV 2019

**DOCUMENT NOT CONSIDERED FINAL UNLESS ALL SIGNATURES COMPLETED**

DocuSigned by:  
*Jason R Doughty*  
 SFT3FA2DEA974E8...