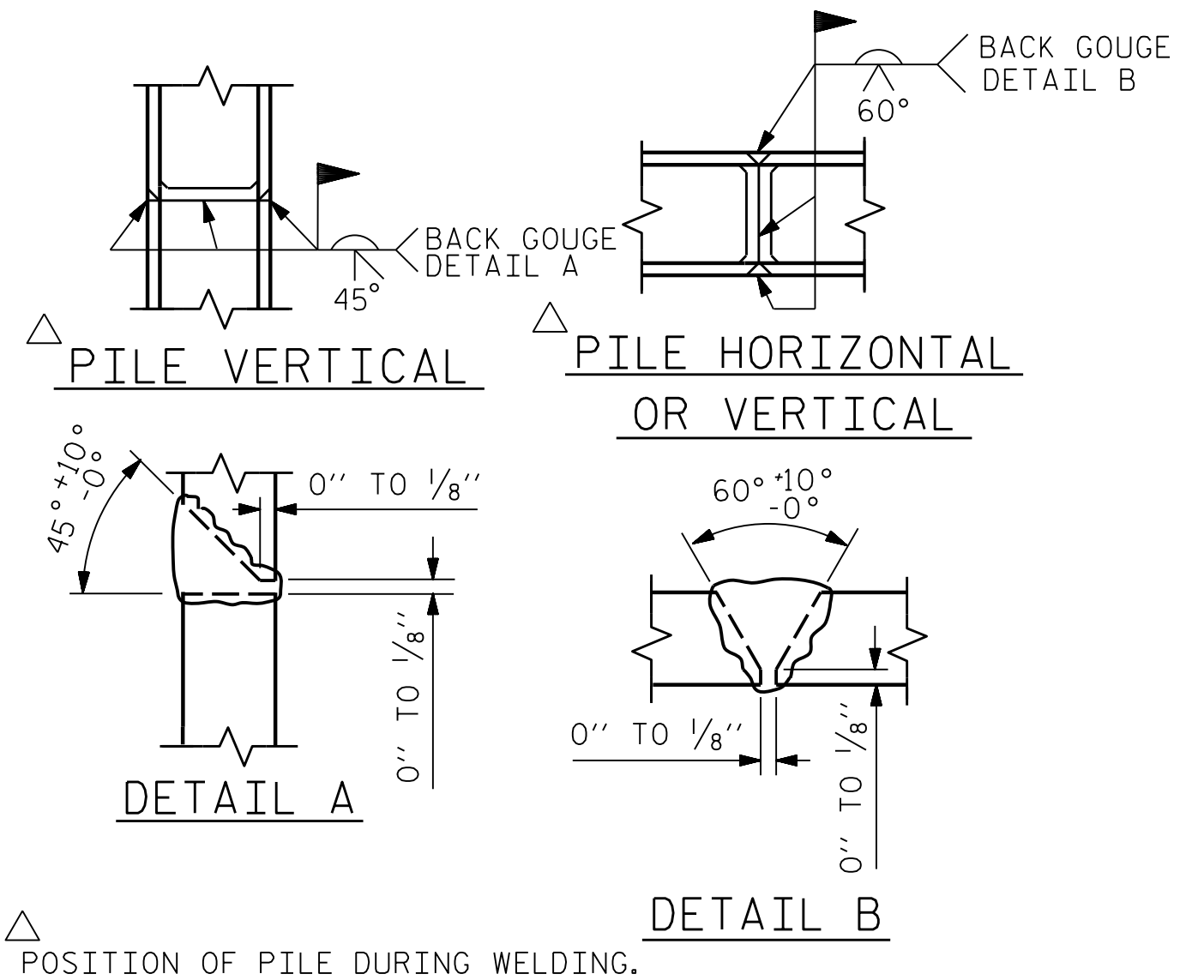


BAGGED STONE AND PIPE SHALL BE PLACED IMMEDIATELY AFTER COMPLETION OF END BENT EXCAVATION. PIPE MAY BE EITHER CONCRETE, CORRUGATED STEEL, CORRUGATED ALUMINUM ALLOY, OR CORRUGATED PLASTIC. PERFORATED PIPE WILL NOT BE ALLOWED.

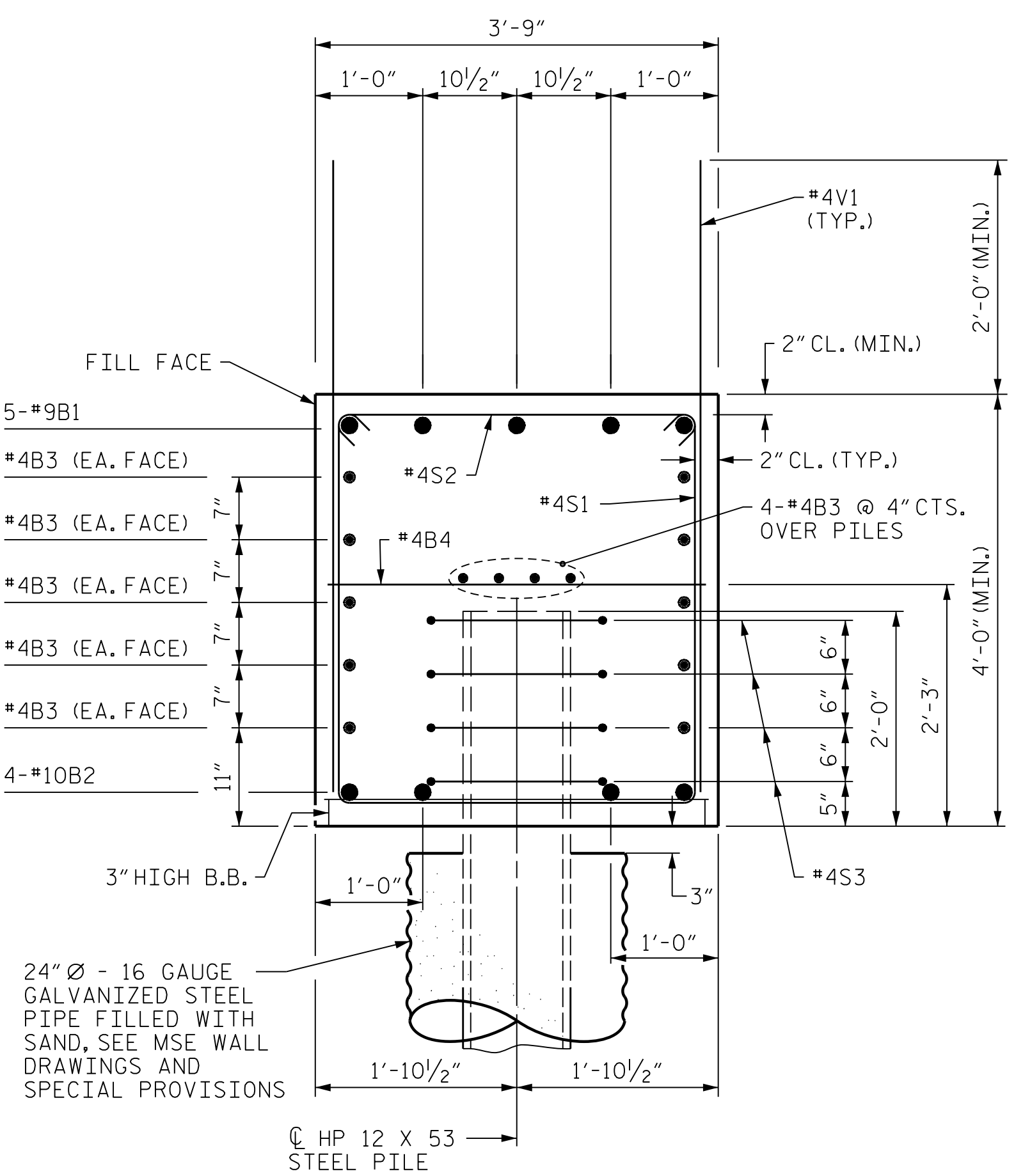
BAGGED STONE SHALL REMAIN IN PLACE UNTIL THE ENGINEER DIRECTS THAT IT BE REMOVED. THE CONTRACTOR SHALL REMOVE AND DISPOSE OF SILT ACCUMULATIONS AT BAGGED STONE WHEN SO DIRECTED BY THE ENGINEER. BAGS SHALL BE REMOVED AND REPLACED WHENEVER THE ENGINEER DETERMINES THAT THEY HAVE DETERIORATED AND LOST THEIR EFFECTIVENESS.

NO SEPARATE PAYMENT WILL BE MADE FOR THIS WORK AND THE ENTIRE COST OF THIS WORK SHALL BE INCLUDED IN THE UNIT CONTRACT PRICE BID FOR THE SEVERAL PAY ITEMS.

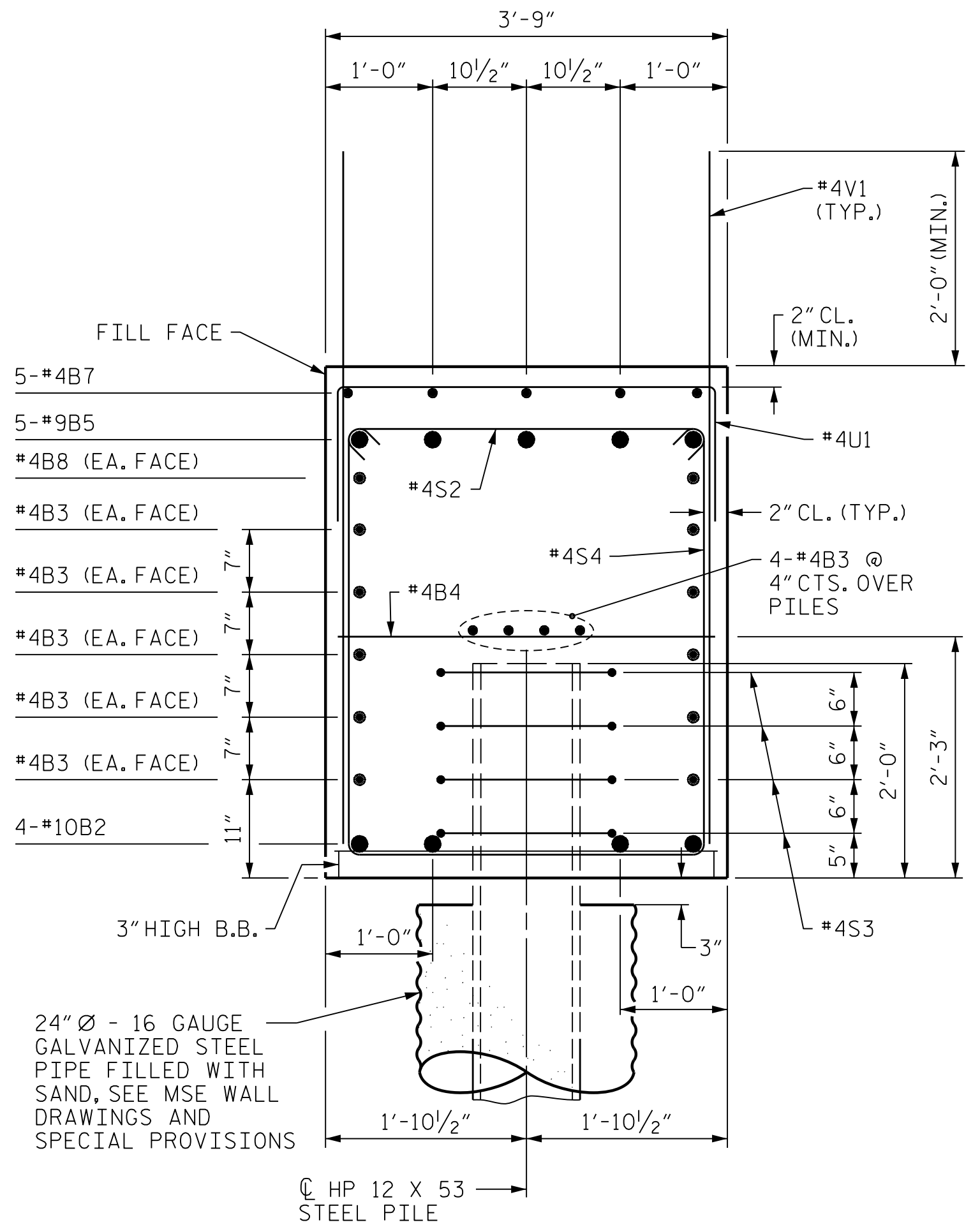
TEMPORARY DRAINAGE AT END BENT



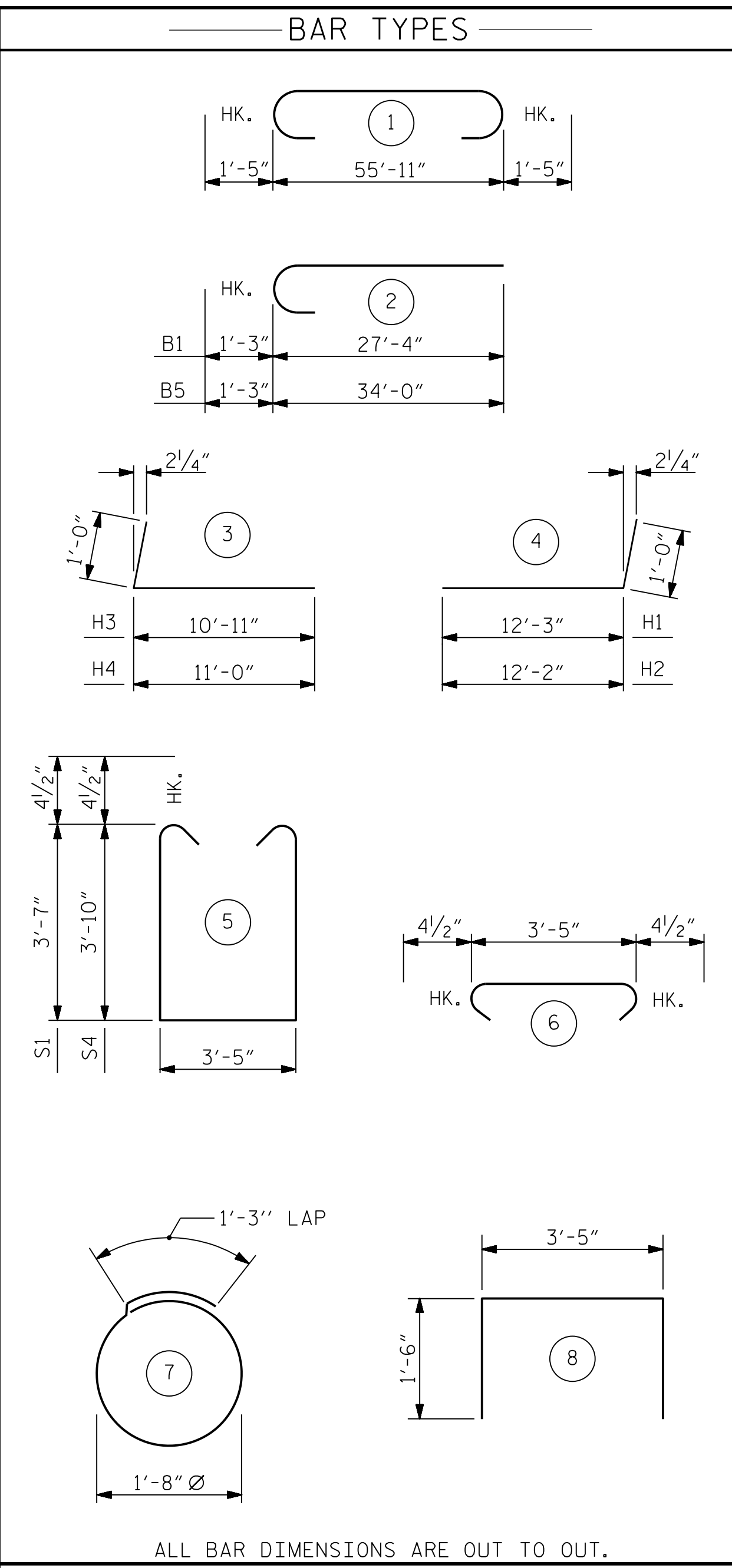
PILE SPLICE DETAILS



SECTION A-A



SECTION B-B



ALL BAR DIMENSIONS ARE OUT TO OUT.

BILL OF MATERIAL					
BAR	NO.	SIZE	TYPE	LENGTH	WEIGHT
B1	5	#9	2	28'-7"	486
B2	4	#10	1	58'-9"	1011
B3	28	#4	STR	29'-3"	547
B4	14	#4	STR	3'-5"	32
B5	5	#9	2	35'-3"	599
B6	5	#4	STR	8'-1"	27
B7	5	#4	STR	8'-4"	28
B8	2	#4	STR	31'-1"	42
H1	22	#6	4	13'-3"	438
H2	22	#6	4	13'-2"	435
H3	20	#5	3	11'-11"	248
H4	20	#5	3	12'-0"	250
K1	12	#4	STR	2'-9"	22
K2	12	#4	STR	2'-8"	21
S1	21	#4	5	11'-4"	160
S2	56	#4	6	4'-2"	156
S3	36	#4	7	6'-6"	156
S4	35	#4	5	11'-10"	277
U1	12	#4	8	6'-5"	51
V1	82	#4	STR	7'-0"	383
V2	34	#5	STR	10'-4"	366
V3	32	#5	STR	9'-6"	317

REINFORCING STEEL	LBS.	6051
CLASS A CONCRETE		
POUR #1 CAP & LOWER WINGS	C.Y.	39.1
POUR #2 UPPER PART OF WINGS	C.Y.	6.3
TOTAL CLASS A CONCRETE	C.Y.	45.4
HP 12x53 STEEL PILES		
NO. 9	LIN. FT.	315
STEEL PILE POINTS	EACH	9
PREDRILLING FOR PILES	LIN. FT.	88
PILE DRIVING EQUIPMENT SETUP FOR HP 12x53 STEEL PILES	NO.	9

PROJECT NO. R-2233BB
RUTHERFORD COUNTY
 STATION: 774+41.49 -L3-
 SHEET 3 OF 3

STATE OF NORTH CAROLINA
 DEPARTMENT OF TRANSPORTATION
 RALEIGH
 SUBSTRUCTURE
 END BENT 2

REVISIONS					
NO.	BY:	DATE:	NO.	BY:	DATE:
1			3		
2			4		

SHEET NO. S2-25
 TOTAL SHEETS 28

MODJESKI and MASTERS
 Experience great bridges.
 333 FAYETTEVILLE STREET, SUITE 500
 RALEIGH, NC 27601
 NC LICENSE NO. C-2979

DocuSigned by:
Jason R. Doughty
 5F73FA2DEA974E8...

DOCUMENT NOT CONSIDERED FINAL UNLESS ALL SIGNATURES COMPLETED

4/22/2020 402_049_R2233BB_SML_E23_800661.DGN

DESIGNED BY: C. CORMAN DATE: JULY 2019
 DRAWN BY: K. WHITE DATE: JULY 2019
 CHECKED BY: M. NIFONG DATE: AUG 2019
 DESIGN ENGINEER OF RECORD: J. DOUGHTY DATE: NOV 2019