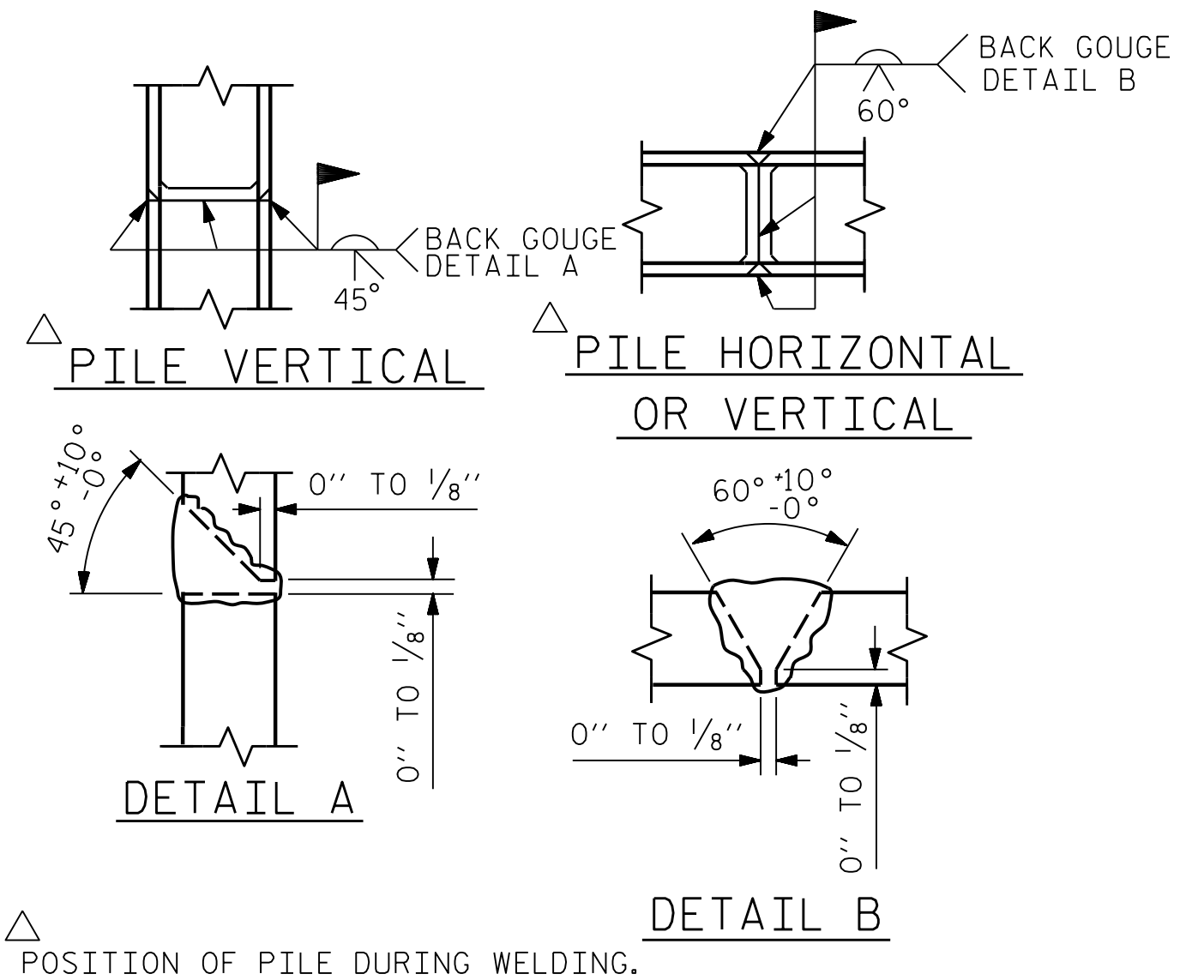


BAGGED STONE AND PIPE SHALL BE PLACED IMMEDIATELY AFTER COMPLETION OF END BENT EXCAVATION. PIPE MAY BE EITHER CONCRETE, CORRUGATED STEEL, CORRUGATED ALUMINUM ALLOY, OR CORRUGATED PLASTIC. PERFORATED PIPE WILL NOT BE ALLOWED.

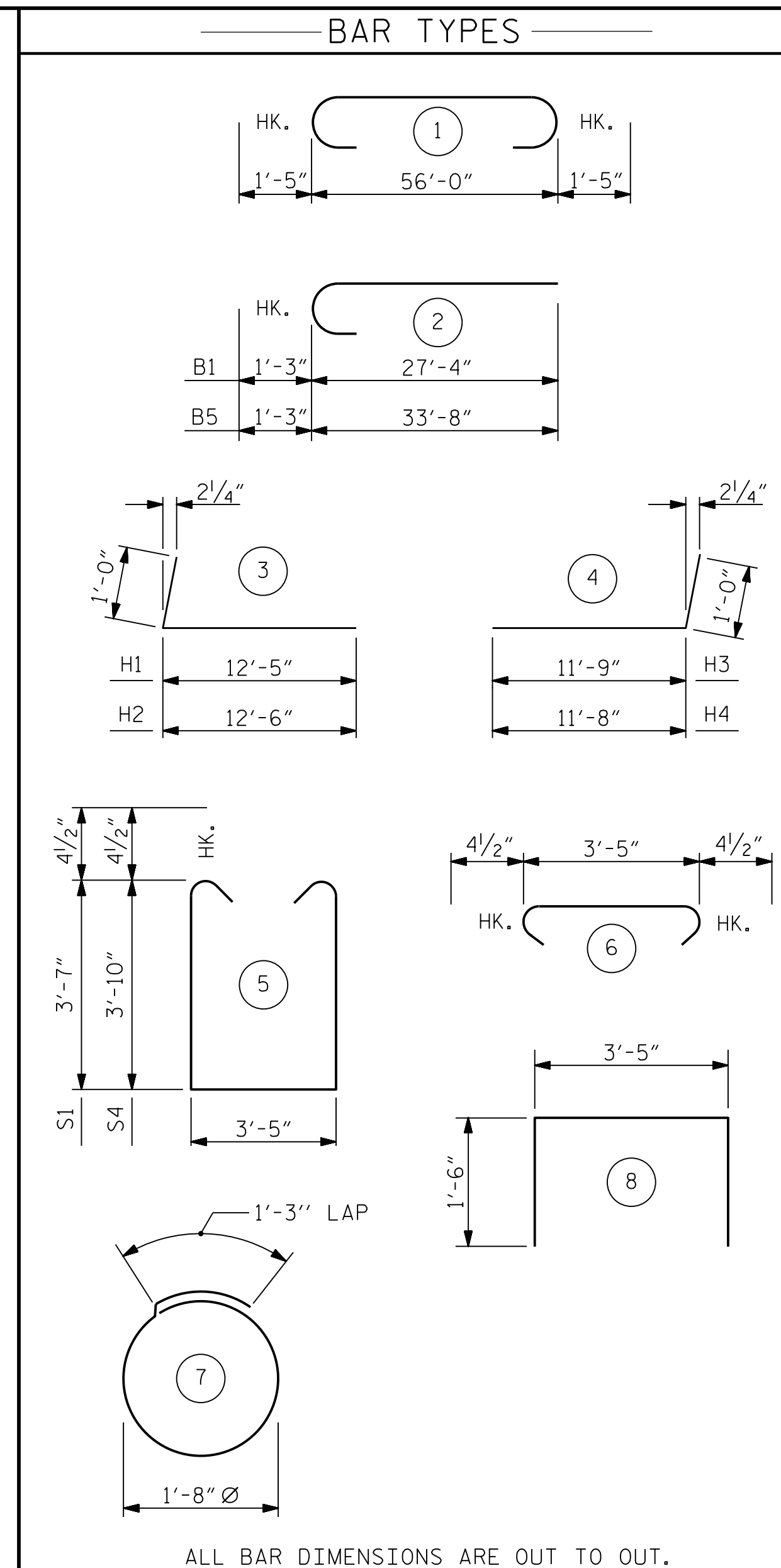
BAGGED STONE SHALL REMAIN IN PLACE UNTIL THE ENGINEER DIRECTS THAT IT BE REMOVED. THE CONTRACTOR SHALL REMOVE AND DISPOSE OF SILT ACCUMULATIONS AT BAGGED STONE WHEN SO DIRECTED BY THE ENGINEER. BAGS SHALL BE REMOVED AND REPLACED WHENEVER THE ENGINEER DETERMINES THAT THEY HAVE DETERIORATED AND LOST THEIR EFFECTIVENESS.

NO SEPARATE PAYMENT WILL BE MADE FOR THIS WORK AND THE ENTIRE COST OF THIS WORK SHALL BE INCLUDED IN THE UNIT CONTRACT PRICE BID FOR THE SEVERAL PAY ITEMS.

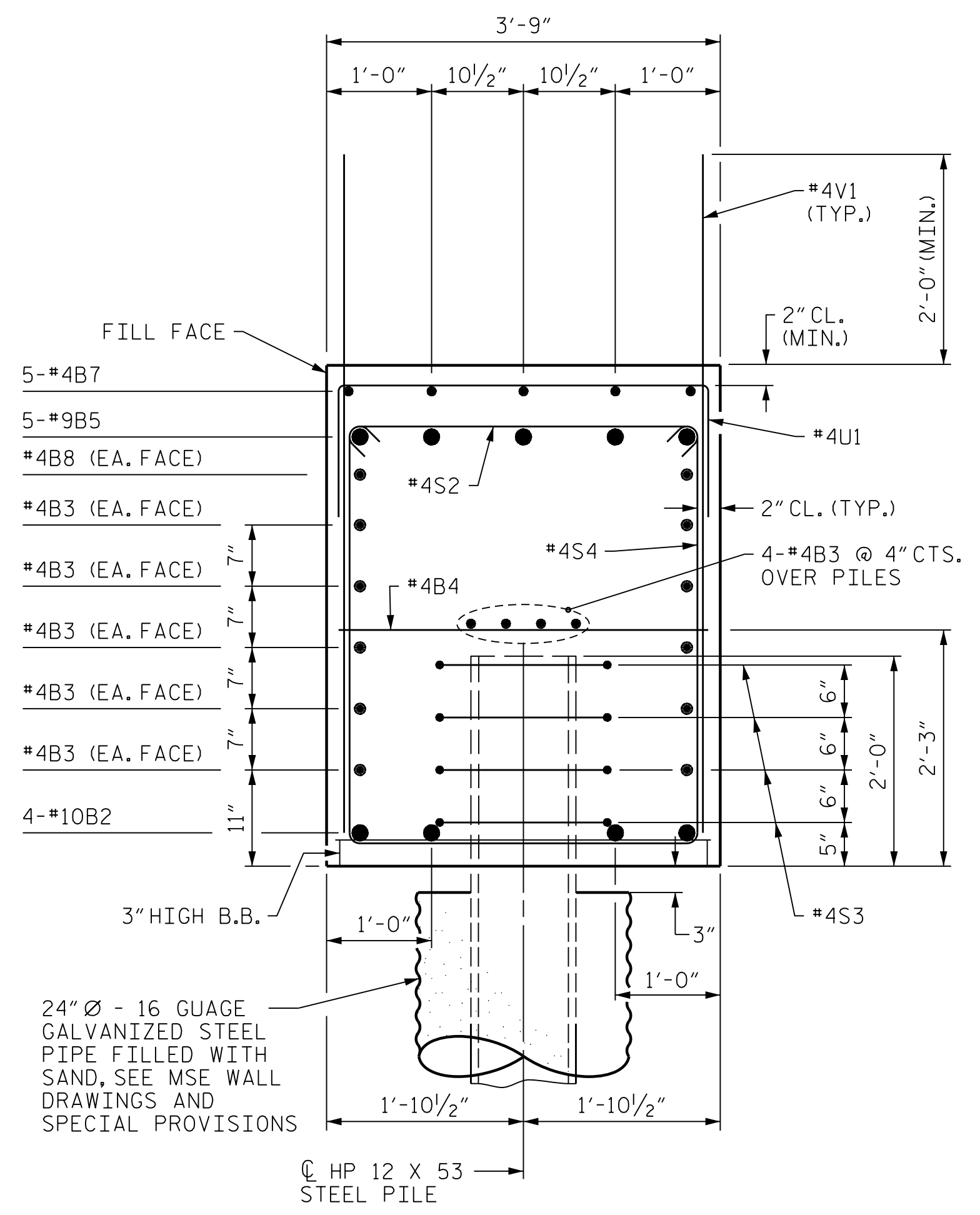
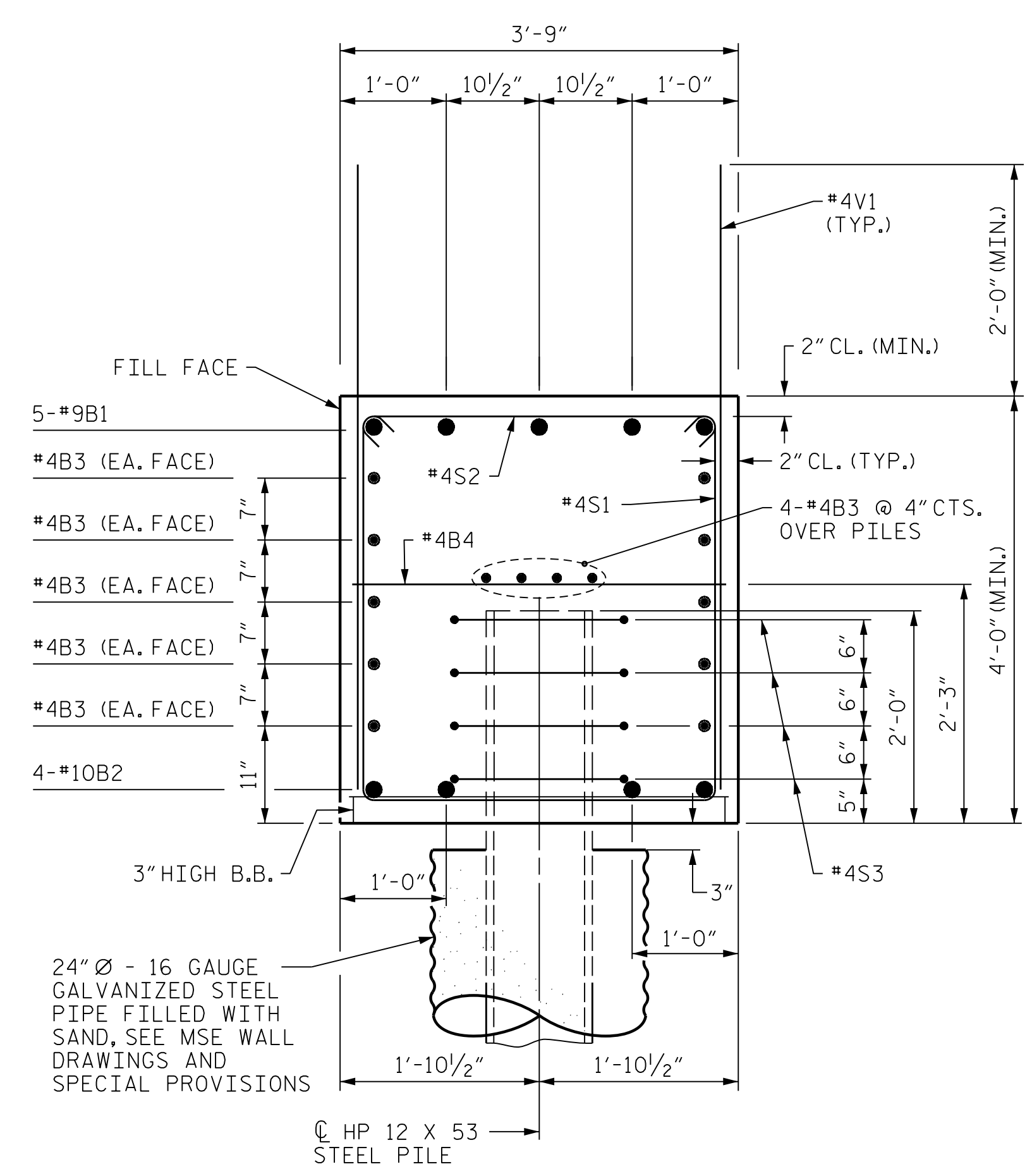
TEMPORARY DRAINAGE AT END BENT



PILE SPLICE DETAILS



| BILL OF MATERIAL | | | | | |
|---|-----|------|------|---------|--------------|
| BAR | NO. | SIZE | TYPE | LENGTH | WEIGHT |
| B1 | 5 | #9 | 2 | 28'-7" | 486 |
| B2 | 4 | #10 | 1 | 58'-10" | 1013 |
| B3 | 28 | #4 | STR | 29'-3" | 547 |
| B4 | 14 | #4 | STR | 3'-5" | 32 |
| B5 | 5 | #9 | 2 | 34'-11" | 594 |
| B6 | 5 | #4 | STR | 8'-6" | 28 |
| B7 | 5 | #4 | STR | 8'-4" | 28 |
| B8 | 2 | #4 | STR | 31'-2" | 42 |
| H1 | 23 | #6 | 3 | 13'-5" | 464 |
| H2 | 23 | #6 | 3 | 13'-6" | 466 |
| H3 | 21 | #5 | 4 | 12'-9" | 279 |
| H4 | 21 | #5 | 4 | 12'-8" | 277 |
| K1 | 12 | #4 | STR | 2'-9" | 22 |
| K2 | 12 | #4 | STR | 2'-8" | 21 |
| S1 | 21 | #4 | 5 | 11'-4" | 160 |
| S2 | 56 | #4 | 6 | 4'-2" | 156 |
| S3 | 36 | #4 | 7 | 6'-6" | 156 |
| S4 | 35 | #4 | 5 | 11'-10" | 277 |
| U1 | 12 | #4 | 8 | 6'-5" | 51 |
| V1 | 82 | #4 | STR | 7'-0" | 383 |
| V2 | 34 | #5 | STR | 10'-6" | 372 |
| V3 | 32 | #5 | STR | 9'-9" | 325 |
| REINFORCING STEEL | | | | | LBS. 6178 |
| CLASS A CONCRETE | | | | | |
| POUR #1 CAP LOWER WINGS & CONC. COLLARS | | | | | C.Y. 38.7 |
| POUR #2 UPPER PART OF WINGS | | | | | C.Y. 6.8 |
| TOTAL CLASS A CONCRETE | | | | | C.Y. 45.5 |
| HP 12x53 STEEL PILES NO. 9 | | | | | LIN. FT. 450 |
| PILE DRIVING EQUIPMENT SETUP FOR HP 12x53 STEEL PILES | | | | | NO. 9 |



PROJECT NO. R-2233BB
RUTHERFORD COUNTY
 STATION: 774+41.49 -L3-
 SHEET 3 OF 3

| STATE OF NORTH CAROLINA DEPARTMENT OF TRANSPORTATION RALEIGH | | | | | |
|--|-----|-------|-----|-----|-------|
| SUBSTRUCTURE END BENT 1 | | | | | |
| REVISIONS | | | | | |
| NO. | BY: | DATE: | NO. | BY: | DATE: |
| 1 | | | 3 | | |
| 2 | | | 4 | | |

SHEET NO. S2-22
 TOTAL SHEETS 28

MODJESKI and MASTERS
 Experience great bridges.
 333 FAYETTEVILLE STREET, SUITE 500
 RALEIGH, NC 27601
 NC LICENSE NO. C-2979

DocuSigned by:
Jason R. Dougherty
 5F73FA2DEA874E8...

**DOCUMENT NOT CONSIDERED FINAL
 UNLESS ALL SIGNATURES COMPLETED**

4/22/2020
 402_043_R2233BB_SML13_800661.DGN

DESIGNED BY: C. CORMAN DATE: JULY 2019
 DRAWN BY: K. WHITE DATE: JULY 2019
 CHECKED BY: M. NIFONG DATE: AUG 2019
 DESIGN ENGINEER OF RECORD: J. DOUGHTY DATE: NOV 2019

STR. #2