

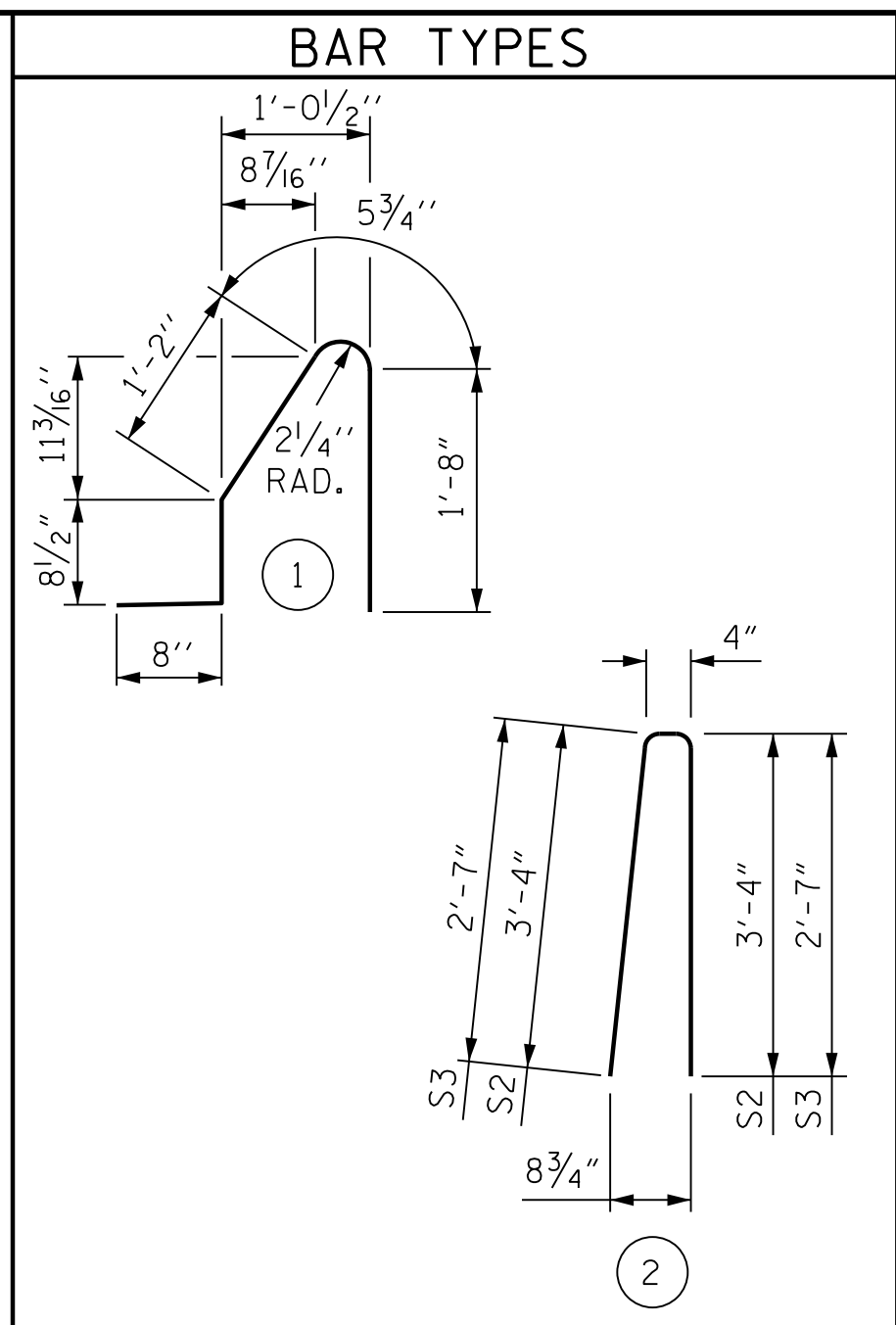
ELEVATION AT EXPANSION JOINTS
BARRIER RAIL DETAILS

NOTES

THE BARRIER RAIL SHALL NOT BE CAST UNTIL ALL SLAB CONCRETE IN THAT SPAN HAS BEEN CAST AND HAS REACHED A MINIMUM COMPRESSIVE STRENGTH OF 3,000 PSI.

ALL REINFORCING STEEL IN BARRIER RAILS SHALL BE EPOXY COATED.

GROOVED CONTRACTION JOINTS, 1/2" IN DEPTH, SHALL BE TOOLED IN ALL EXPOSED FACES OF THE BARRIER RAIL AND IN ACCORDANCE WITH ARTICLE 825-10(B) OF THE STANDARD SPECIFICATIONS. THE CONTRACTION JOINT SHALL BE LOCATED AT EACH THIRD POINT BETWEEN BARRIER RAIL EXPANSION JOINTS. ONLY ONE CONTRACTION JOINT IS REQUIRED AT MIDPOINT OF BARRIER RAIL SEGMENTS LESS THAN 20 FEET IN LENGTH AND NO CONTRACTION JOINTS ARE REQUIRED FOR THOSE SEGMENTS LESS THAN 10 FEET IN LENGTH.

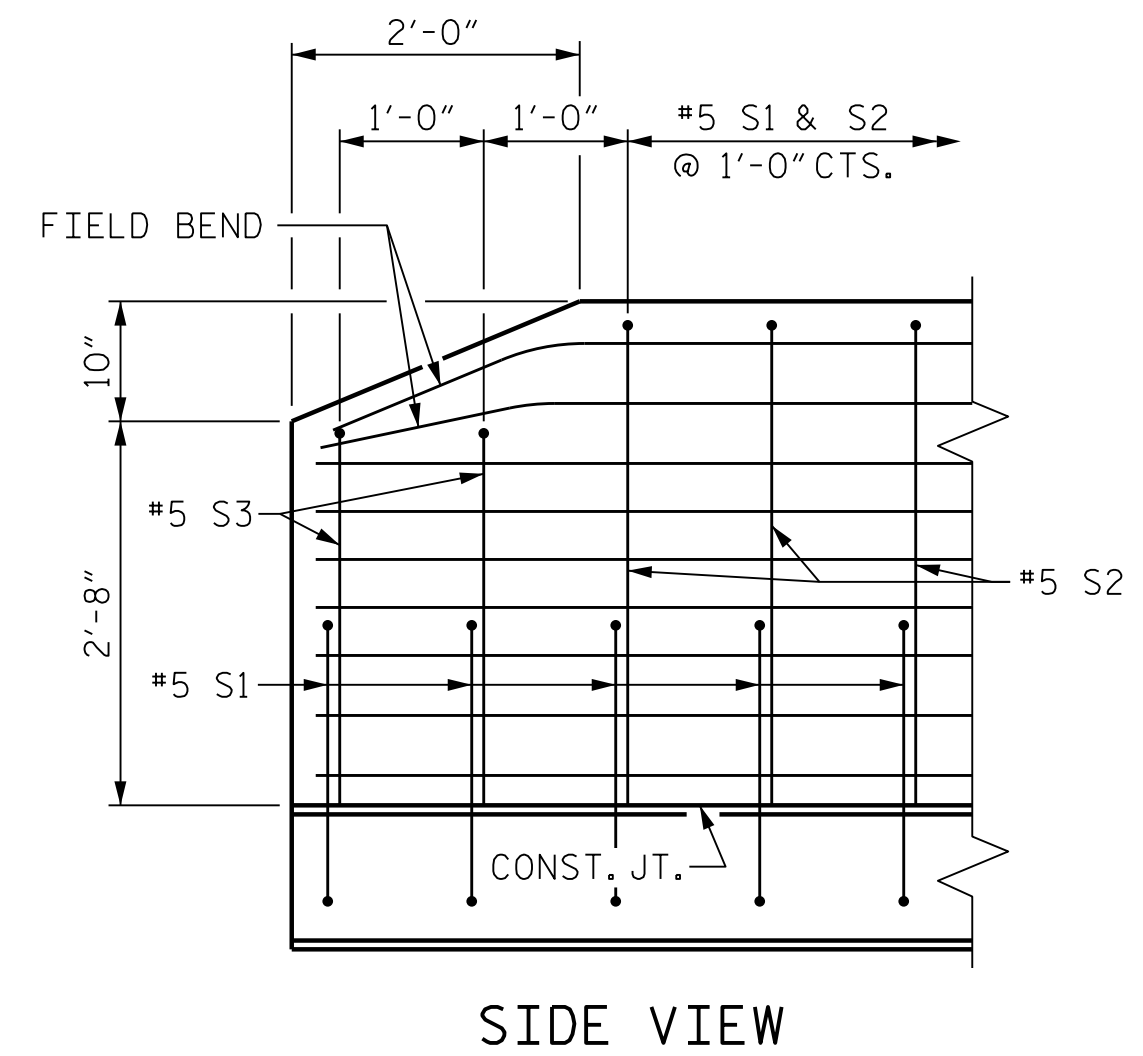
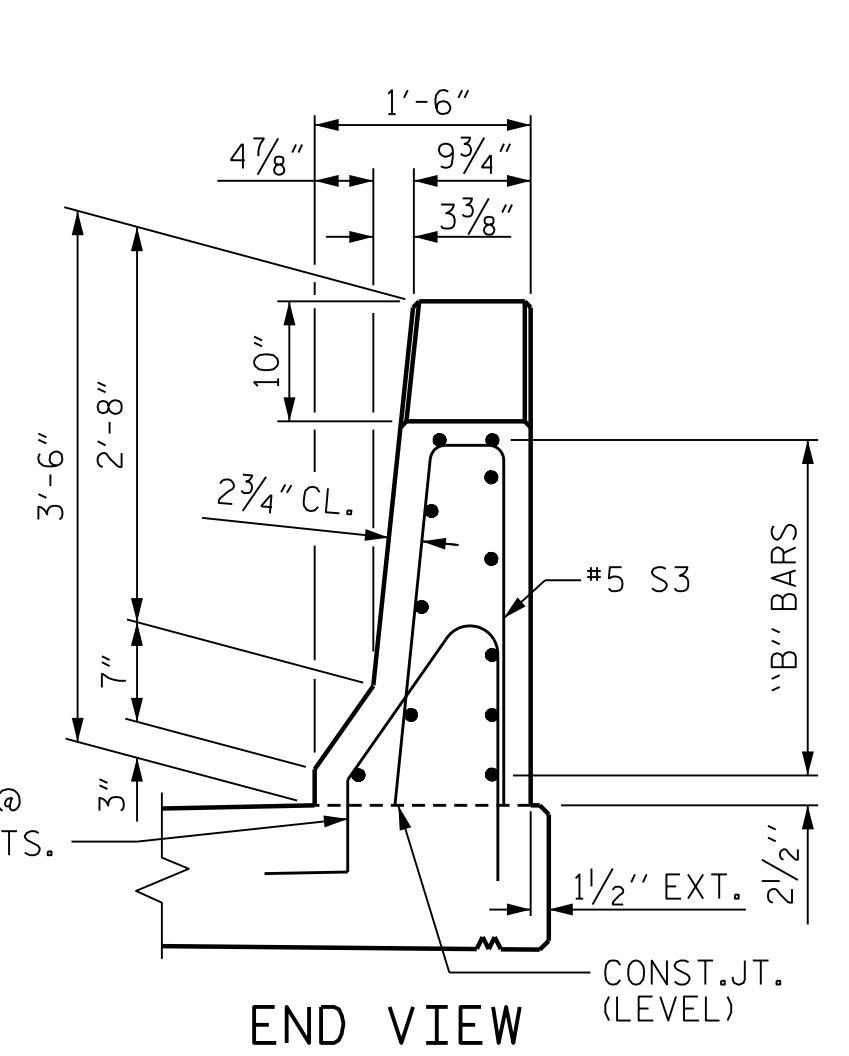
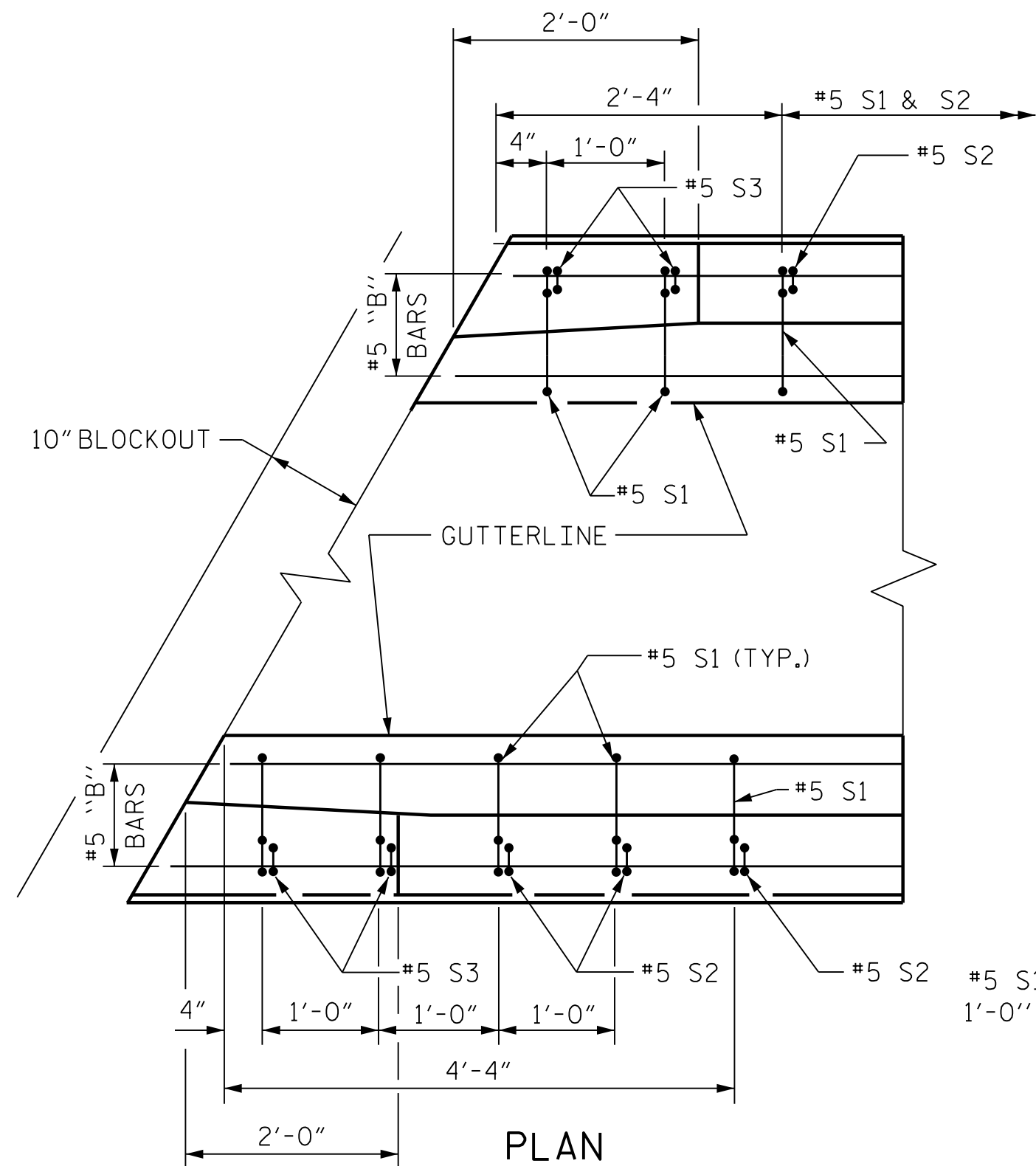
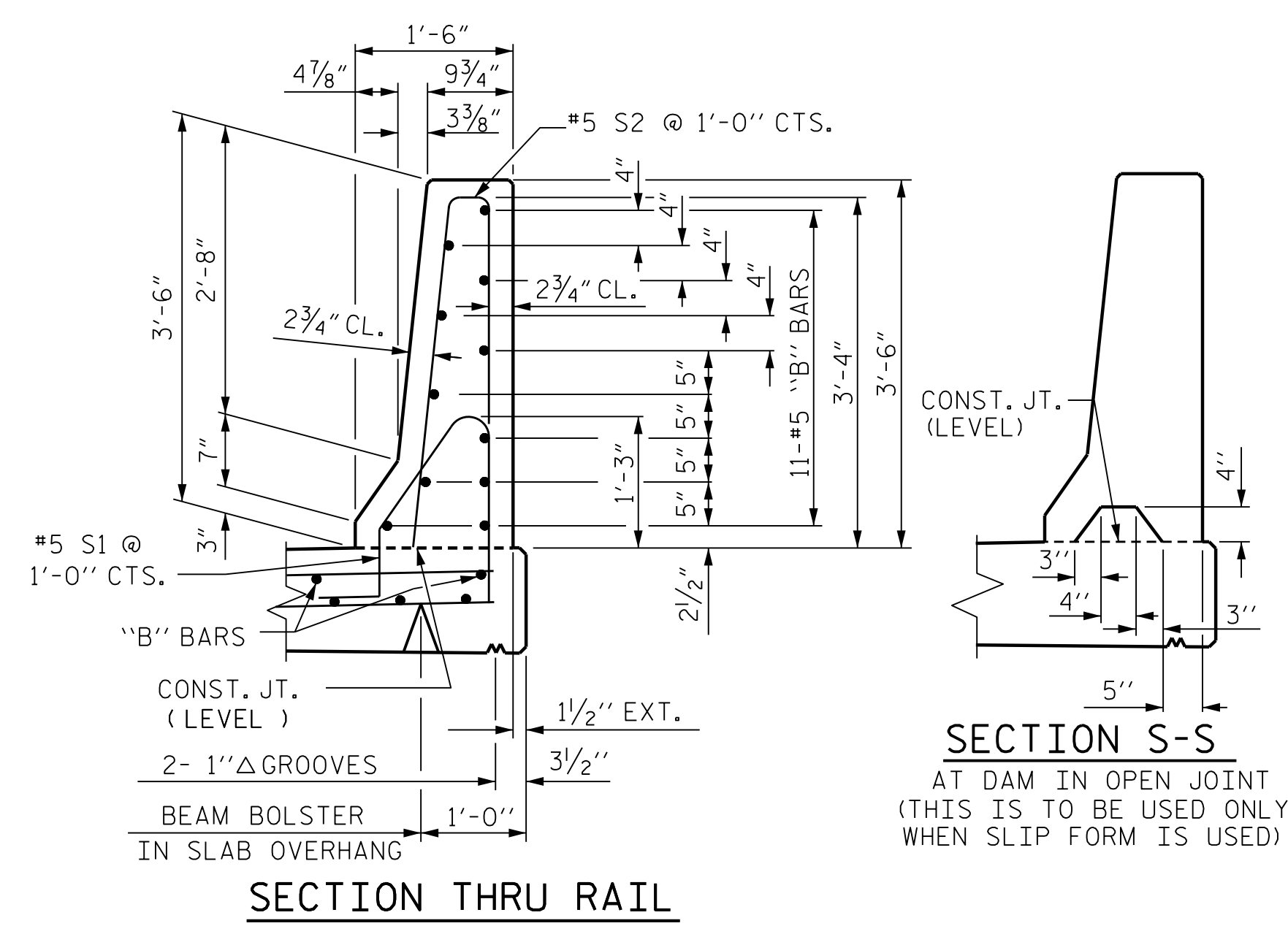


ALL BAR DIMENSIONS ARE OUT TO OUT

BILL OF MATERIAL

FOR CONCRETE BARRIER RAIL ONLY

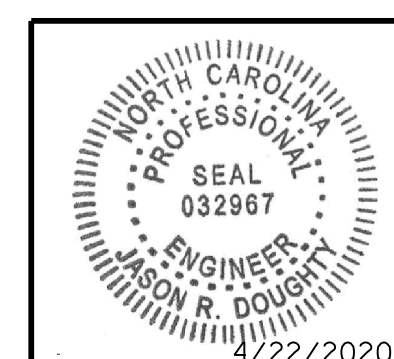
| BAR | NO. | SIZE | TYPE | LENGTH | WEIGHT |
|----------------------------------|-----|------|------|--------|----------------|
| * B1 | 22 | 5 | STR | 24'-5" | 560 |
| * B2 | 44 | 5 | STR | 25'-8" | 1178 |
| * B3 | 22 | 5 | STR | 24'-8" | 566 |
| * S1 | 204 | 5 | 1 | 4'-8" | 993 |
| * S2 | 196 | 5 | 2 | 7'-0" | 1431 |
| * S3 | 8 | 5 | 2 | 5'-6" | 46 |
| * EPOXY COATED REINFORCING STEEL | | | | | 4,774 LBS. |
| CLASS AA CONCRETE | | | | | 27.7 CU. YDS. |
| CONCRETE BARRIER RAIL | | | | | 203.6 LIN. FT. |



END OF RAIL DETAILS



333 FAYETTEVILLE STREET, SUITE 500
RALEIGH, NC 27601
NC LICENSE NO. C-2979



DocuSigned by:
Jason R Doughty
5F73FA2DEA974E8...

PROJECT NO. R-2233BB
RUTHERFORD COUNTY
STATION: 774+41.49 -L3-
SHEET 2 OF 2

STATE OF NORTH CAROLINA
DEPARTMENT OF TRANSPORTATION
RALEIGH
STANDARD
CONCRETE
BARRIER RAIL

| REVISIONS | | | | | | SHEET NO. |
|-----------|-----|-------|-----|-----|-------|--------------|
| NO. | BY: | DATE: | NO. | BY: | DATE: | TOTAL SHEETS |
| 1 | | | 3 | | | 28 |
| 2 | | | 4 | | | |

STR. #2 CBR1

DESIGNED BY: C. CORMAN DATE: JULY 2019
DRAWN BY: K. WHITE DATE: APR 2019
CHECKED BY: J. BORUTA DATE: AUG 2019
DESIGN ENGINEER OF RECORD: J. DOUGHTY DATE: NOV 2019

DRAWN BY: ARB 5/87
CHECKED BY: SJD 9/87
REV. 7/12 MAA/GM
REV. 6/13 MAA/GM
REV. 12/17 MAA/THC

**DOCUMENT NOT CONSIDERED FINAL
UNLESS ALL SIGNATURES COMPLETED**

4/22/2020
402_033_R2233BB_SML_BRD_000661.DGN