

NOTES

ALL PRESTRESSING STRANDS SHALL BE 7-WIRE LOW-RELAXATION GRADE 270 STRANDS AND SHALL CONFORM TO AASHTO M203 EXCEPT FOR SAMPLING REQUIREMENTS WHICH SHALL BE IN ACCORDANCE WITH THE STANDARD SPECIFICATIONS.

ALL REINFORCING STEEL SHALL BE GRADE 60.

EMBEDDED PLATE "B-1" SHALL BE GALVANIZED IN ACCORDANCE WITH THE STANDARD SPECIFICATIONS.

ANCHOR STUDS SHALL CONFORM TO AASHTO M169 GRADES 1010 THROUGH 1020 OR APPROVED EQUAL, AND SHALL MEET THE TYPE "B" REQUIREMENTS OF SUBSECTION 7.3 OF THE ANSI/AASHTO/AWS D1.5 BRIDGE WELDING CODE.

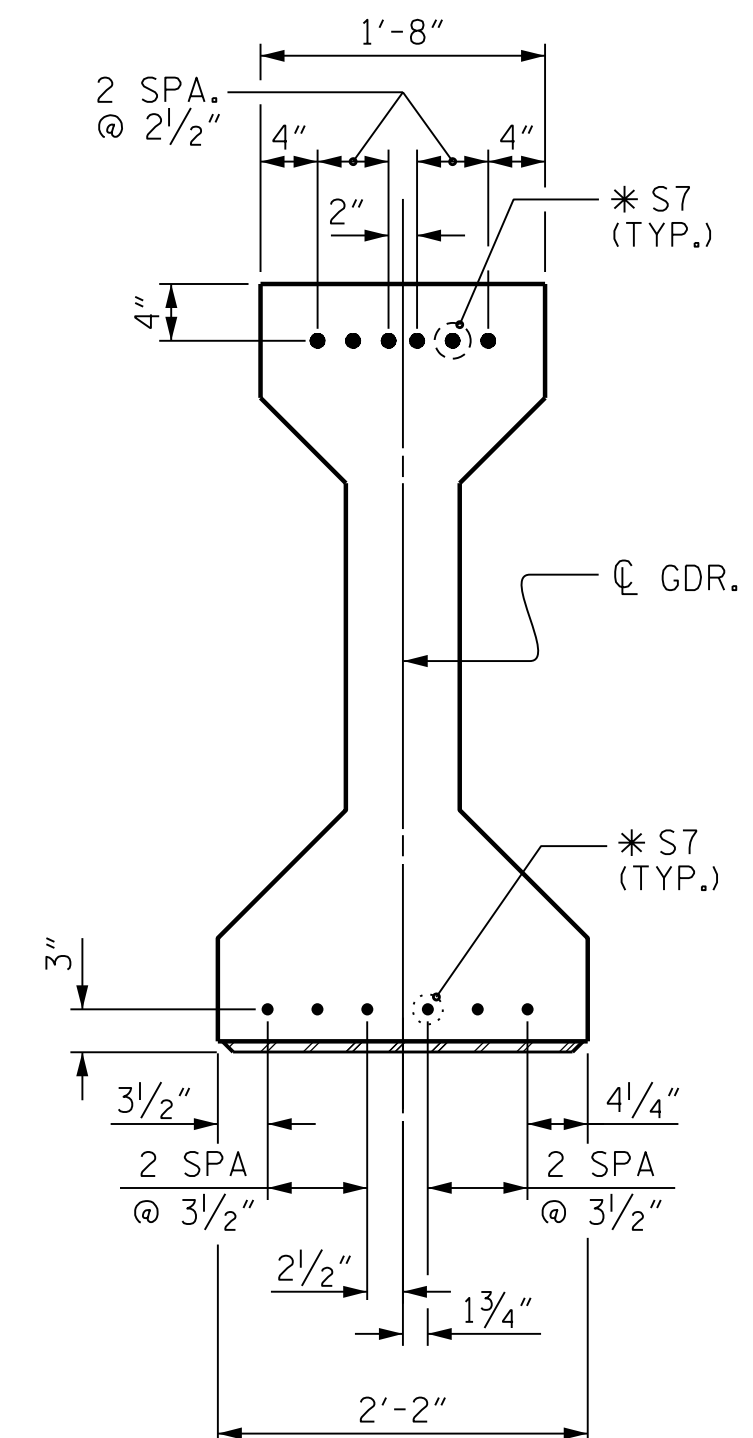
AT ENDS OF GIRDERS TO BE EMBEDDED IN CONCRETE DIAPHRAGMS OR END WALLS, PRESTRESSING STRANDS MAY EXTEND A MAXIMUM OF 2" BEYOND THE GIRDER ENDS. OTHERWISE, PRESTRESSING STRANDS SHALL BE CUT FLUSH WITH THE GIRDER ENDS.

THE TRANSFER OF LOAD FROM THE ANCHORAGES TO THE GIRDER SHALL BE DONE WHEN CONCRETE HAS REACHED A COMPRESSIVE STRENGTH OF NOT LESS THAN 6,400 PSI.

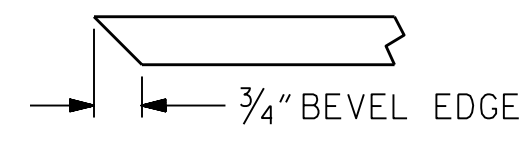
DEPENDING ON THE TYPE OF SYSTEM USED TO SUPPORT THE DECK SLAB FORMS, PRESET ANCHORS MAY BE NECESSARY IN THE PRESTRESSED CONCRETE GIRDER.

THE TOP SURFACE OF THE GIRDER, EXCLUDING THE OUTSIDE 4", SHALL BE RAKED TO A DEPTH OF 1/4".

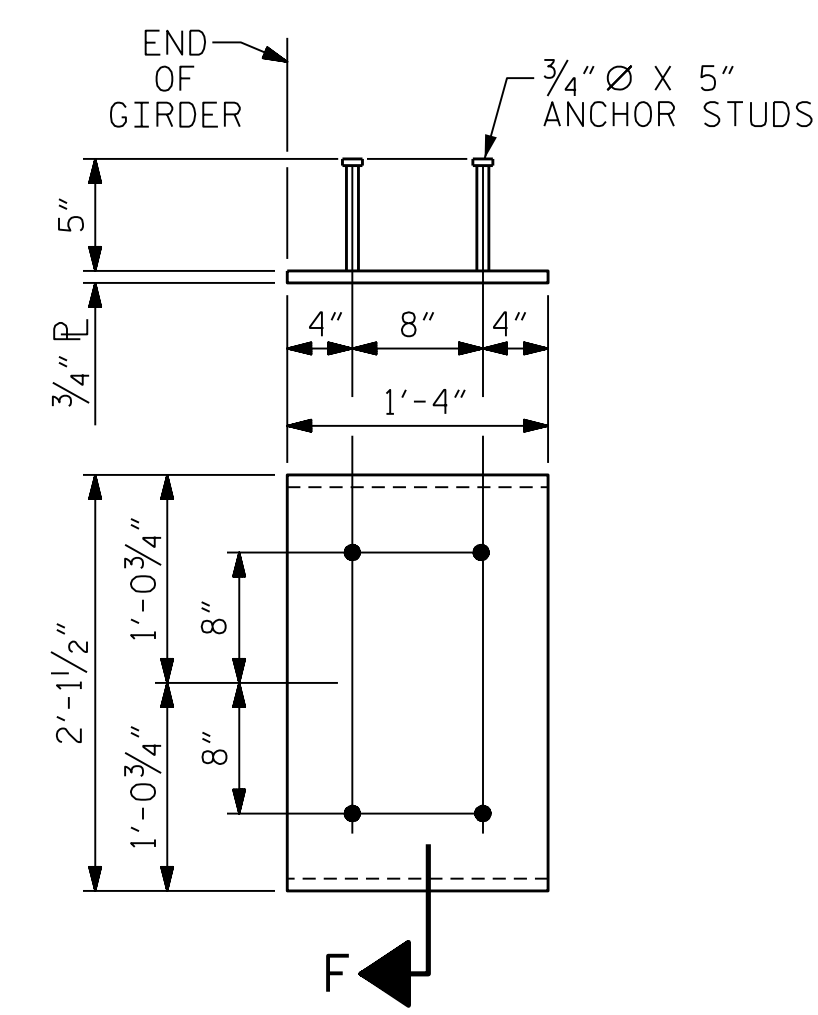
THE CONTRACTOR HAS THE OPTION TO PROVIDE, AT NO ADDITIONAL COST TO THE DEPARTMENT, 2 ADDITIONAL STRANDS AT THE TOP OF THE GIRDER TO FACILITATE TYING OF THE REINFORCING STEEL. THESE STRANDS SHALL BE PULLED TO A LOAD OF 4500 lbs.



**DETAIL "A"**  
(FOR AASHTO TYPE IV GIRDERS)



**SECTION "F"**  
(SEE NOTES)



**EMBEDDED PLATE "B-1" DETAILS FOR AASHTO TYPE IV GIRDER**  
(2 REQ'D PER GIRDER)

DEAD LOAD DEFLECTION TABLE FOR GIRDERS												
	SPAN A											
	GIRDERS 1 THRU 6											
TENTH POINTS	0.0	.10	.20	.30	.40	.50	.60	.70	.80	.90	1.0	
CAMBER (GIRDER ALONE IN PLACE)	↑	0	0.064	0.120	0.165	0.193	0.203	0.193	0.165	0.120	0.064	0
* DEFLECTION DUE TO SUPERIMPOSED D.L.	↓	0	0.050	0.098	0.136	0.160	0.169	0.160	0.136	0.098	0.050	0
FINAL CAMBER	↑	0	3/16"	1/4"	5/16"	3/8"	7/16"	3/8"	5/16"	1/4"	3/16"	0

\* INCLUDES FUTURE WEARING SURFACE.  
ALL VALUES ARE SHOWN IN FEET (DECIMAL FORM), EXCEPT "FINAL CAMBER", WHICH IS GIVEN IN INCHES (FRACTION FORM).

PROJECT NO. R-2233BB  
RUTHERFORD COUNTY  
STATION: 774+41.49 -L3-

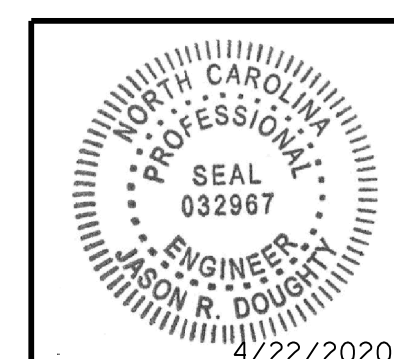
4/22/2020 402\_025\_R2233BB\_SML\_C2\_800661.DGN

DESIGNED BY: <u>C. CORMAN</u>	DATE: <u>JULY 2019</u>	DRAWN BY: <u>K. WHITE</u>	DATE: <u>JULY 2019</u>	CHECKED BY: <u>J. BORUTA</u>	DATE: <u>AUG 2019</u>	DESIGN ENGINEER OF RECORD: <u>J. DOUGHTY</u>	DATE: <u>NOV 2019</u>	DRAWN BY: <u>ELR 11/91</u>	REV. <u>1/15</u>	MAA/TMG
		CHECKED BY: <u>GRP 11/91</u>	REV. <u>2/15</u>	MAA/TMG				REV. <u>12/17</u>	MAA/THC	



333 FAYETTEVILLE STREET, SUITE 500  
RALEIGH, NC 27601  
NC LICENSE NO. C-2979

**DOCUMENT NOT CONSIDERED FINAL UNLESS ALL SIGNATURES COMPLETED**



DocuSigned by:  
*Jason R. Doughty*  
5F73FA2DEA874E8...

STATE OF NORTH CAROLINA  
DEPARTMENT OF TRANSPORTATION  
RALEIGH  
STANDARD  
**PRESTRESSED CONCRETE GIRDER CONTINUOUS FOR LIVE LOAD DETAILS**

REVISIONS						SHEET NO.
NO.	BY:	DATE:	NO.	BY:	DATE:	TOTAL SHEETS
1			3			28
2			4			