
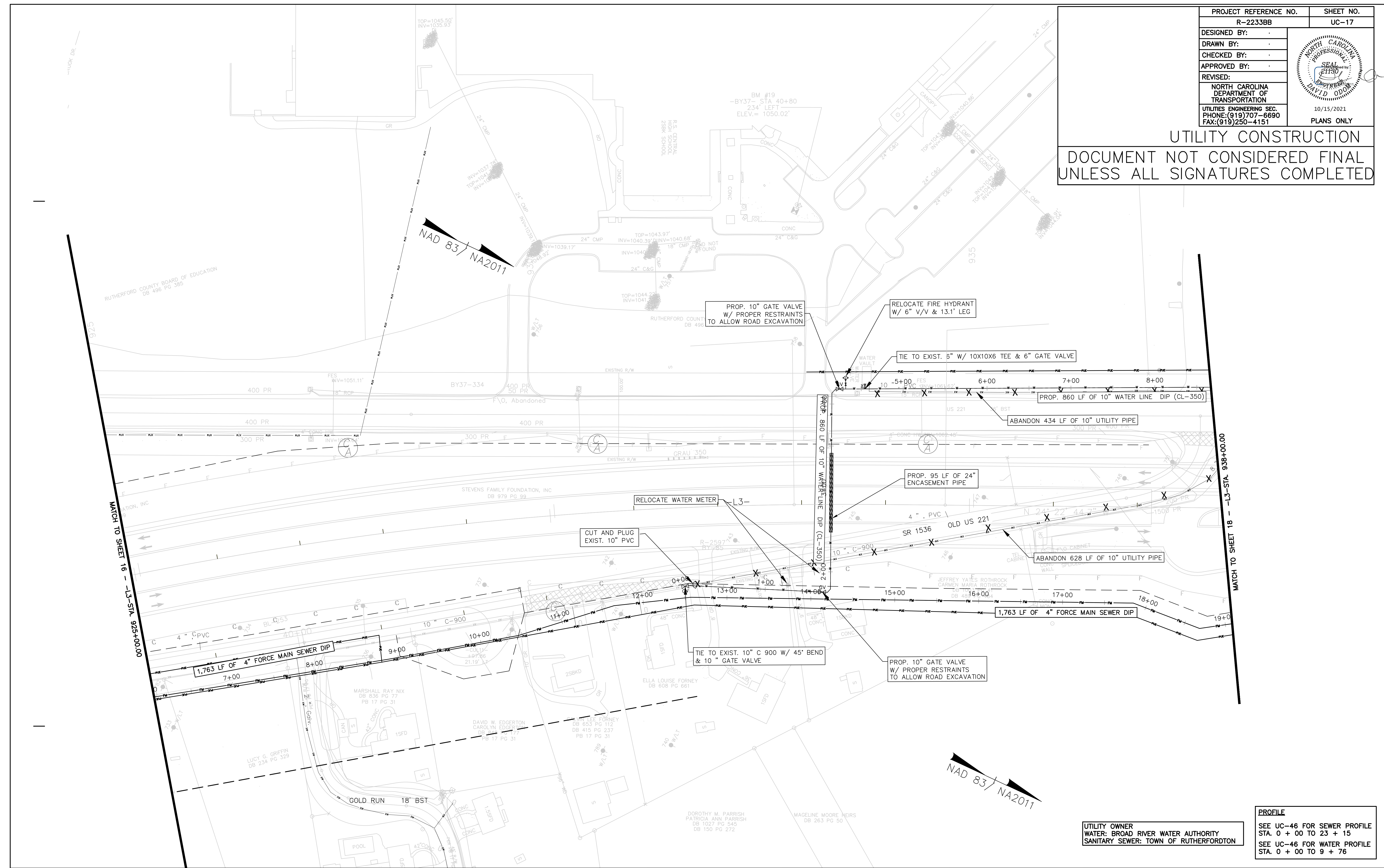


PROJECT REFERENCE NO.	R-2233BB	SHEET NO.	UC-17
DESIGNED BY:			
DRAWN BY:			
CHECKED BY:			
APPROVED BY:			
REVISED:			
NORTH CAROLINA DEPARTMENT OF TRANSPORTATION		10/15/2021	
UTILITIES ENGINEERING SEC. PHONE: (919) 707-6690 FAX: (919) 250-4151		PLANS ONLY	

UTILITY CONSTRUCTION
DOCUMENT NOT CONSIDERED FINAL
UNLESS ALL SIGNATURES COMPLETED



RUTHERFORD COUNTY BOARD OF EDUCATION
DB 496 PG 385

PROP. 10" GATE VALVE
W/ PROPER RESTRAINTS
TO ALLOW ROAD EXCAVATION

RELOCATE FIRE HYDRANT
W/ 6" V/V & 13.1' LEG

TIE TO EXIST. 6" W/ 10X10X6 TEE & 6" GATE VALVE

PROP. 860 LF OF 10" WATER LINE
DIP (CL-350)

ABANDON 434 LF OF 10" UTILITY PIPE

PROP. 95 LF OF 24"
ENCASEMENT PIPE

RELOCATE WATER METER

CUT AND PLUG
EXIST. 10" PVC

ABANDON 628 LF OF 10" UTILITY PIPE

1,763 LF OF 4" FORCE MAIN SEWER DIP

TIE TO EXIST. 10" C 900 W/ 45° BEND
& 10" GATE VALVE

PROP. 10" GATE VALVE
W/ PROPER RESTRAINTS
TO ALLOW ROAD EXCAVATION

NAD 83 / NA2011

UTILITY OWNER
WATER: BROAD RIVER WATER AUTHORITY
SANITARY SEWER: TOWN OF RUTHERFORDTON

PROFILE
SEE UC-46 FOR SEWER PROFILE
STA. 0 + 00 TO 23 + 15
SEE UC-46 FOR WATER PROFILE
STA. 0 + 00 TO 9 + 76