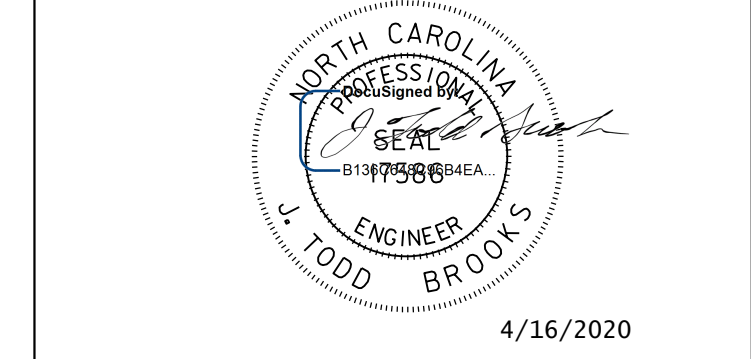


APPROVED: \_\_\_\_\_

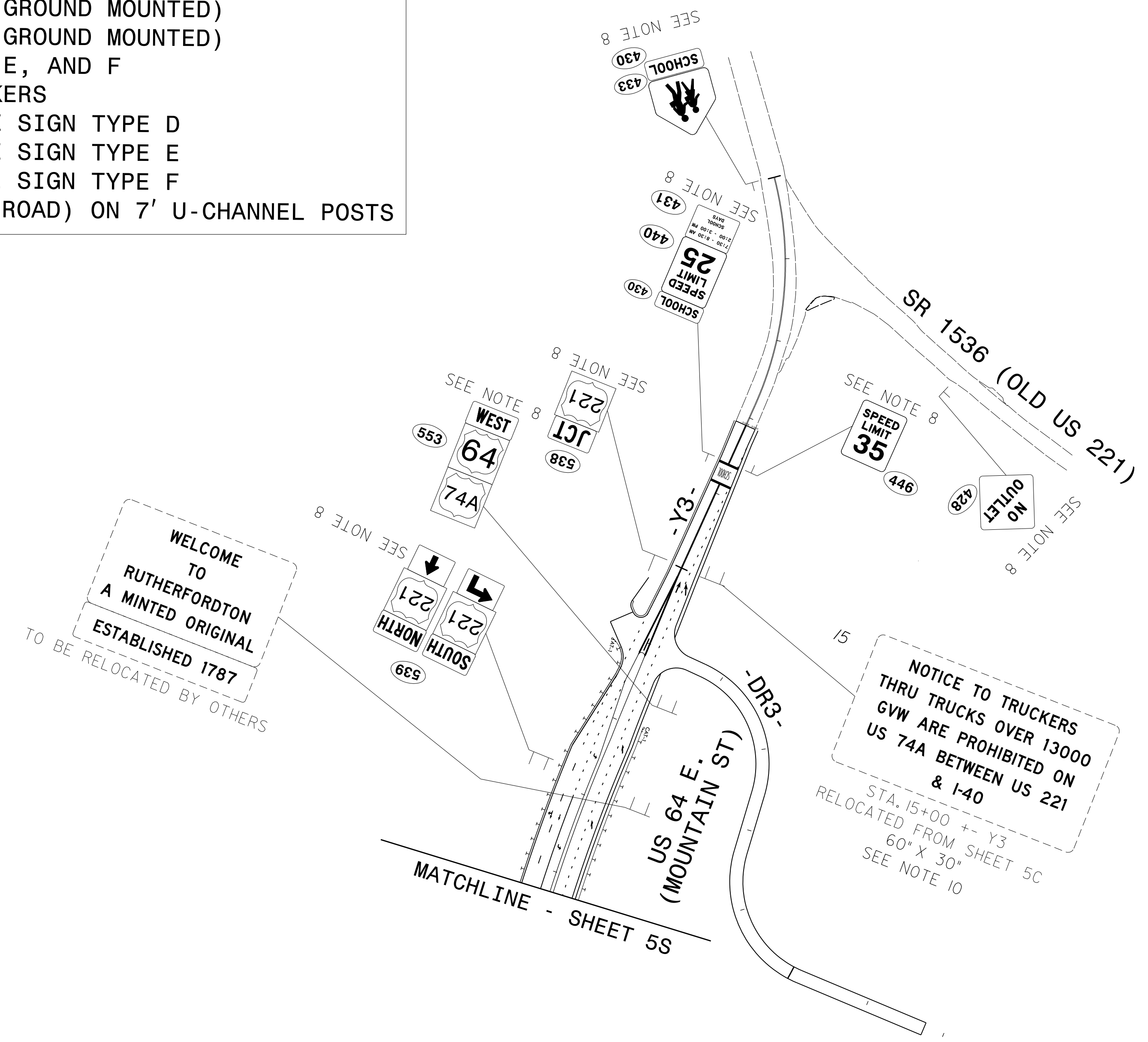
DATE: \_\_\_\_\_



4/16/2020  
**DOCUMENT NOT CONSIDERED FINAL UNLESS ALL SIGNATURES COMPLETED**

**PAY ITEM NOTES**

1. DISPOSAL OF SIGN SYSTEM, U-CHANNEL
2. DISPOSAL OF SUPPORT, U-CHANNEL
3. DISPOSAL OF SIGN, D, E, OR F
4. SIGN ERECTION, TYPE A (OVERHEAD)
5. SIGN ERECTION, TYPE B (OVERHEAD)
6. SIGN ERECTION, TYPE A (GROUND MOUNTED)
7. SIGN ERECTION, TYPE B (GROUND MOUNTED)
8. SIGN ERECTION, TYPE D, E, AND F
9. SIGN ERECTION, MILEMARKERS
10. SIGN ERECTION, RELOCATE SIGN TYPE D
11. SIGN ERECTION, RELOCATE SIGN TYPE E
12. SIGN ERECTION, RELOCATE SIGN TYPE F
13. OBJECT MARKERS (END OF ROAD) ON 7' U-CHANNEL POSTS



I:\ARR-2020\1423\16\AVENUE ROCK AT PLOUA 13U\obshenars\16\ARR-2020\1423\16\AVENUE ROCK AT PLOUA 13U\Plans\2233BB\Traffic\Signing\Plans\R2233BB-SIGN-5T.dgn



**PROPOSED SIGNS**