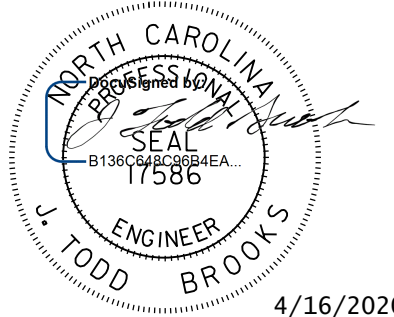
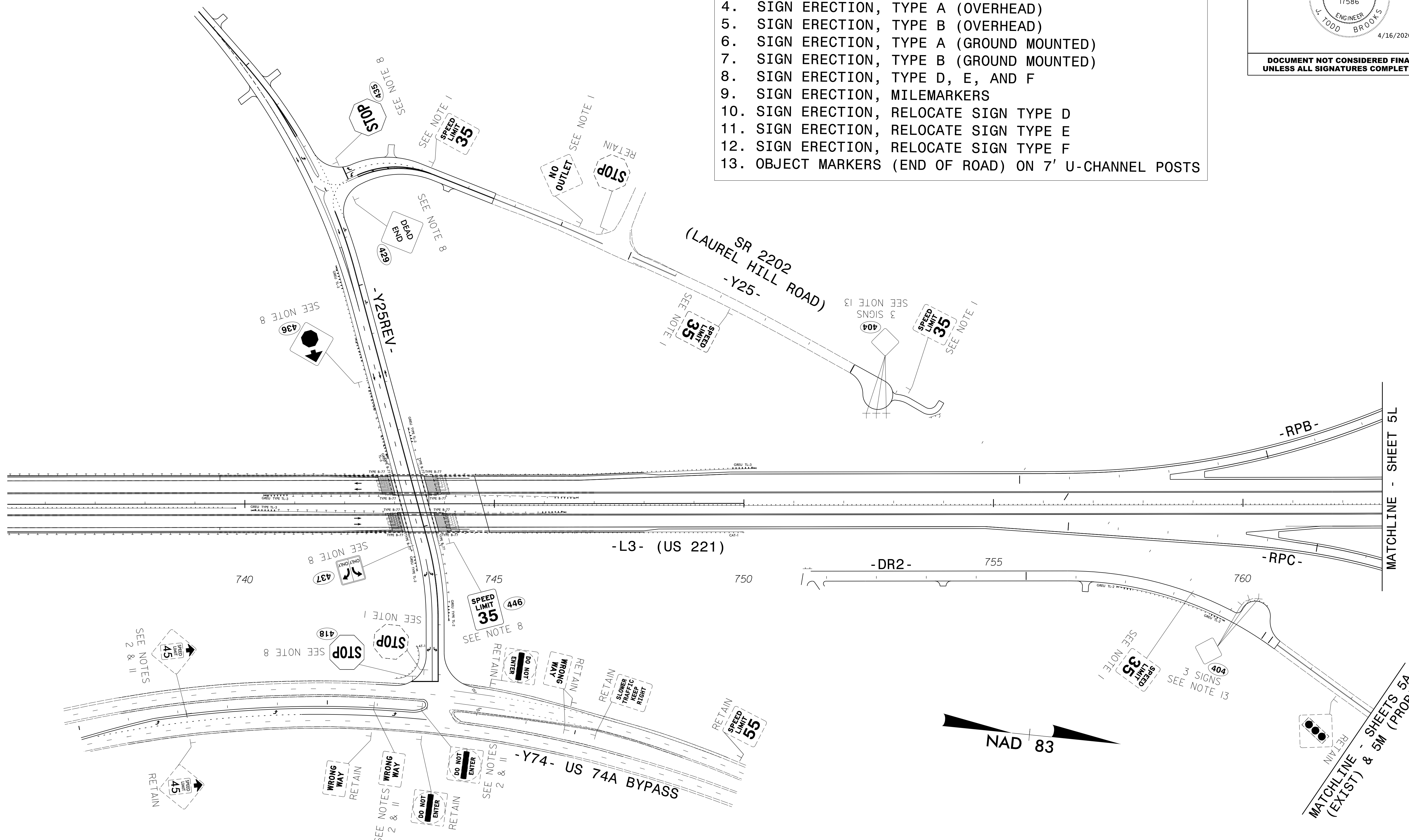


TIP NO. R-2233BB	SHEET NO. SIGN - 5K
APPROVED: _____	
DATE: _____	
SEAL	
 J. TODD BROOKS ENGINEER 4/16/2020	
DOCUMENT NOT CONSIDERED FINAL UNLESS ALL SIGNATURES COMPLETED	

- PAY ITEM NOTES**
1. DISPOSAL OF SIGN SYSTEM, U-CHANNEL
 2. DISPOSAL OF SUPPORT, U-CHANNEL
 3. DISPOSAL OF SIGN, D, E, OR F
 4. SIGN ERECTION, TYPE A (OVERHEAD)
 5. SIGN ERECTION, TYPE B (OVERHEAD)
 6. SIGN ERECTION, TYPE A (GROUND MOUNTED)
 7. SIGN ERECTION, TYPE B (GROUND MOUNTED)
 8. SIGN ERECTION, TYPE D, E, AND F
 9. SIGN ERECTION, MILEMARKERS
 10. SIGN ERECTION, RELOCATE SIGN TYPE D
 11. SIGN ERECTION, RELOCATE SIGN TYPE E
 12. SIGN ERECTION, RELOCATE SIGN TYPE F
 13. OBJECT MARKERS (END OF ROAD) ON 7' U-CHANNEL POSTS



I:\APR-2020\1423
 \RAVENROCK\TRAFFIC\Signing\Plans\R2233BB-SIGN-5K.dgn
 obshears AT PLOUA13U


Dewberry
 2610 WYCLIFF ROAD
 RALEIGH, NC 27607
 SUITE 410
 PHONE: 919.881.9939
 NC COA No. F-0929

EXISTING & PROPOSED SIGNS