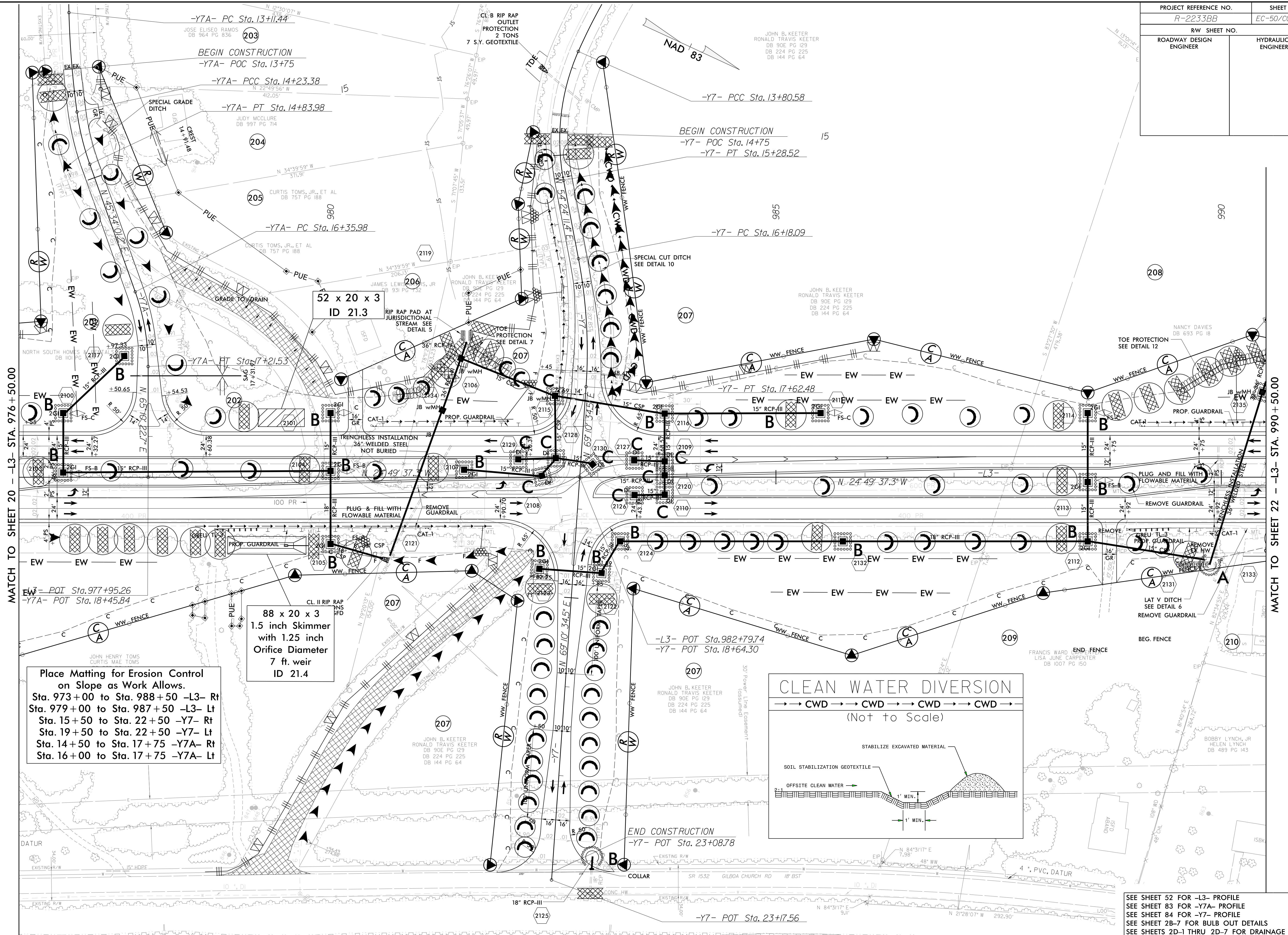


PROJECT REFERENCE NO.	SHEET NO.
R-2233BB	EC-50/CONST. 21
RW SHEET NO.	
ROADWAY DESIGN ENGINEER	HYDRAULICS ENGINEER



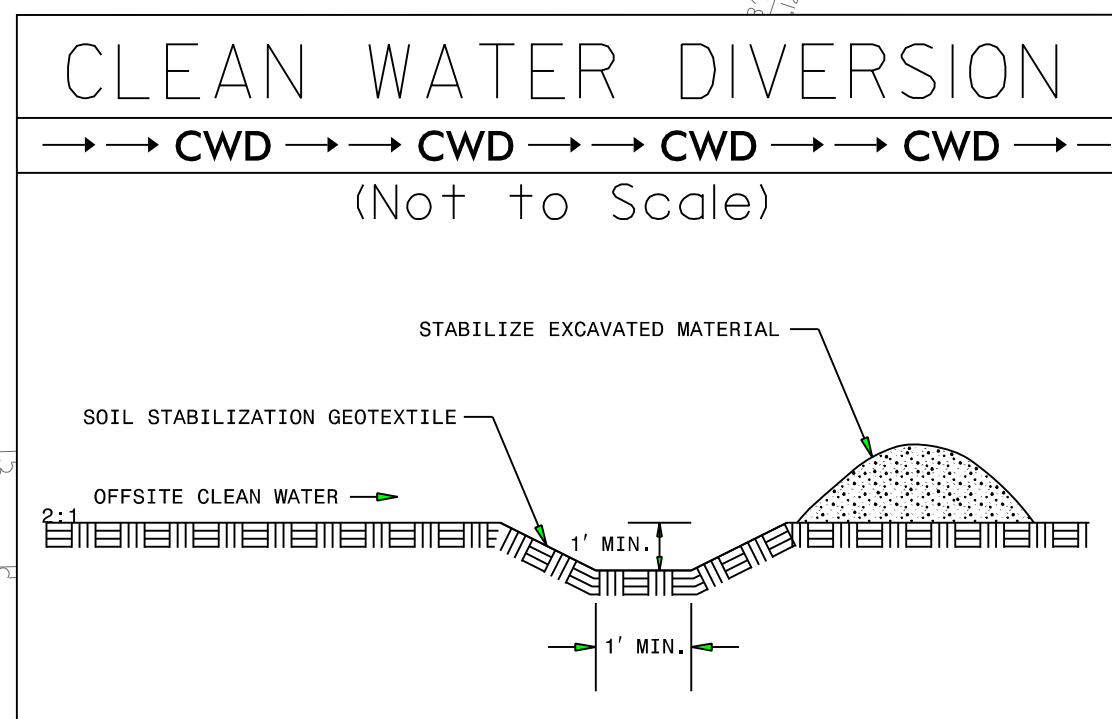
MATCH TO SHEET 20 - L3- STA. 976 + 50.00

MATCH TO SHEET 22 - L3- STA. 990 + 50.00

Place Matting for Erosion Control on Slope as Work Allows.
 Sta. 973+00 to Sta. 988+50 -L3- Rt
 Sta. 979+00 to Sta. 987+50 -L3- Lt
 Sta. 15+50 to Sta. 22+50 -Y7- Rt
 Sta. 19+50 to Sta. 22+50 -Y7- Lt
 Sta. 14+50 to Sta. 17+75 -Y7A- Rt
 Sta. 16+00 to Sta. 17+75 -Y7A- Lt

88 x 20 x 3
 1.5 inch Skimmer
 with 1.25 inch Orifice Diameter
 7 ft. weir
 ID 21.4

52 x 20 x 3
 ID 21.3
 RIP RAP PAD AT JURISDICTIONAL STREAM SEE DETAIL 5



ROW REV. - December 21, 2017 - Parcel 203- added PUE line (WET).
 ROW REV. - December 21, 2017 - Parcel 228- Added PUE pins (WET).
 ROW REV. - December 21, 2017 - Parcel 229 - Added PUE pins (WET).

3/16/2020
 R-2233BB-EC_PSH.dgn
 5:38:34 PM

SEE SHEET 52 FOR -L3- PROFILE
 SEE SHEET 83 FOR -Y7A- PROFILE
 SEE SHEET 84 FOR -Y7- PROFILE
 SEE SHEET 2B-7 FOR BULB OUT DETAILS
 SEE SHEETS 2D-1 THRU 2D-7 FOR DRAINAGE DETAILS