

PROJECT REFERENCE NO.	SHEET NO.
R-2233BB	EC-4/CONST.12
RW SHEET NO.	
ROADWAY DESIGN ENGINEER	HYDRAULICS ENGINEER

Place Matting for Erosion Control on Slope as Work Allows.
 Sta. 863+00 to Sta. 870+00 -L3- Lt
 Sta. 864+00 to Sta. 868+50 -L3- Rt
 Sta. 871+00 to Sta. 877+50 -L3- Rt
 Sta. 872+50 to Sta. 877+50 -L3- Lt

Modified Silt Basin
 Type 'B'
 35 x 22 x 3
 6 ft. weir
 (See Tiered Skimmer Basin Detail)
 ID 12.2

35 x 22 x 3
 1.5 inch Skimmer
 with 1.0 inch
 Orifice Diameter
 6 ft. weir
 (See Tiered Skimmer Basin Detail)
 ID 12.2

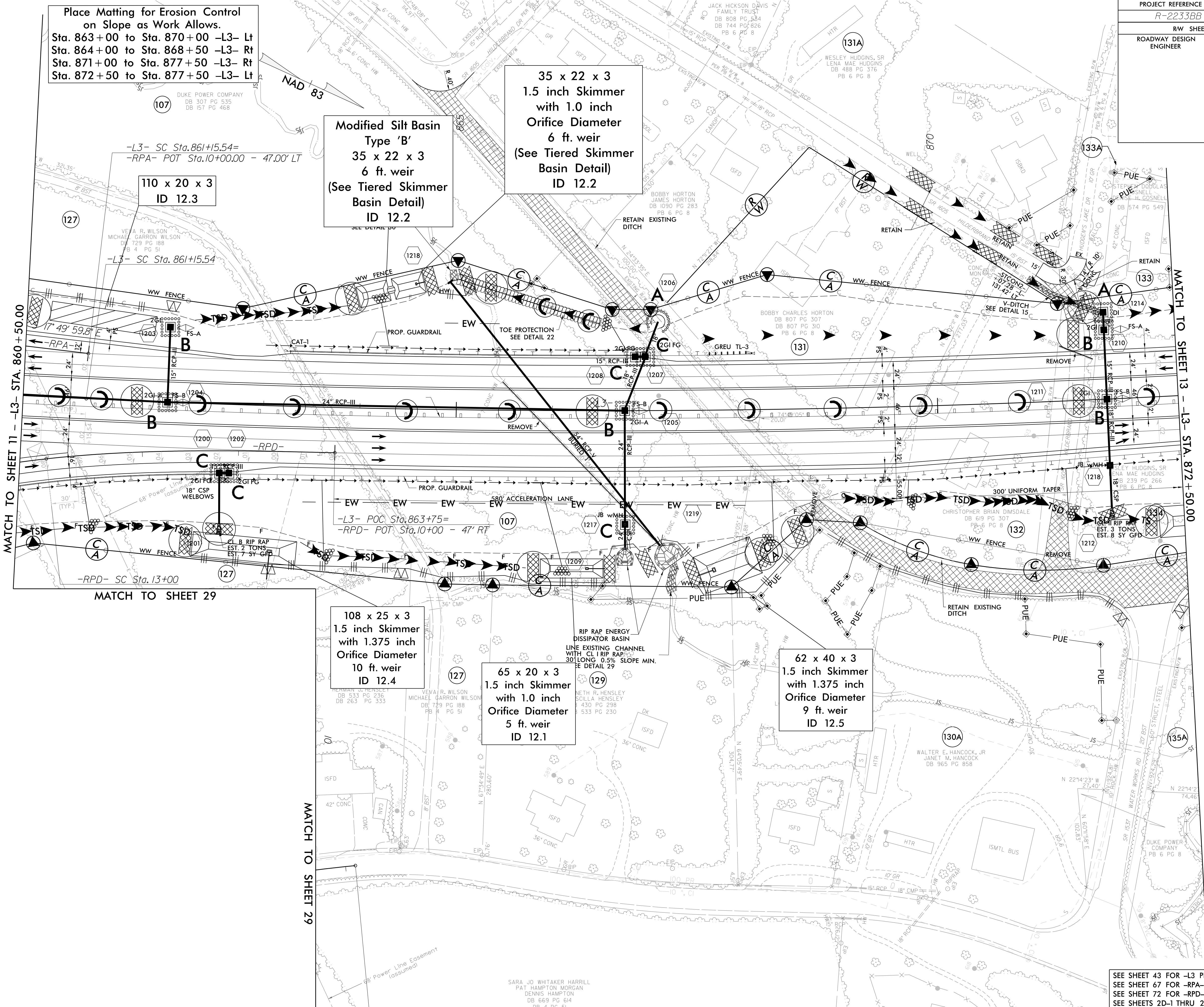
110 x 20 x 3
 ID 12.3

108 x 25 x 3
 1.5 inch Skimmer
 with 1.375 inch
 Orifice Diameter
 10 ft. weir
 ID 12.4

65 x 20 x 3
 1.5 inch Skimmer
 with 1.0 inch
 Orifice Diameter
 5 ft. weir
 ID 12.1

62 x 40 x 3
 1.5 inch Skimmer
 with 1.375 inch
 Orifice Diameter
 9 ft. weir
 ID 12.5

RIP RAP ENERGY DISSIPATOR BASIN
 LINE EXISTING CHANNEL WITH CL 1 RIP RAP
 30' LONG 0.5% SLOPE MIN.
 SEE DETAIL 29



MATCH TO SHEET 11 - L3- STA. 860+50.00

MATCH TO SHEET 29

MATCH TO SHEET 29

MATCH TO SHEET 13 - L3- STA. 872+50.00

ROW REV. - December 21, 2017 - Parcel 133- Added PUE line (WET)

3/16/2020
 R-2233BB-EC_PSH.dgn
 5:37:45 PM

SARA JO WHITAKER HARRILL
 PAT HAMPTON MORGAN
 DENNIS HAMPTON
 DB 669 PG 614
 PG 4 OF 61

SEE SHEET 43 FOR -L3 PROFILE
 SEE SHEET 67 FOR -RPA- PROFILE
 SEE SHEET 72 FOR -RPD- PROFILE
 SEE SHEETS 2D-1 THRU 2D-7 FOR DRAINAGE DETAILS