

NO.	REVISIONS

112 x 30 x 3
2 inch Skimmer
with 2 inch
Orifice Diameter
20 ft. weir
(See Tiered Skimmer
Basin Detail)
ID 11.1

Modified Silt Basin
Type 'B'
112 x 30 x 3
20 ft. weir
(See Tiered Skimmer
Basin Detail)
ID 11.1

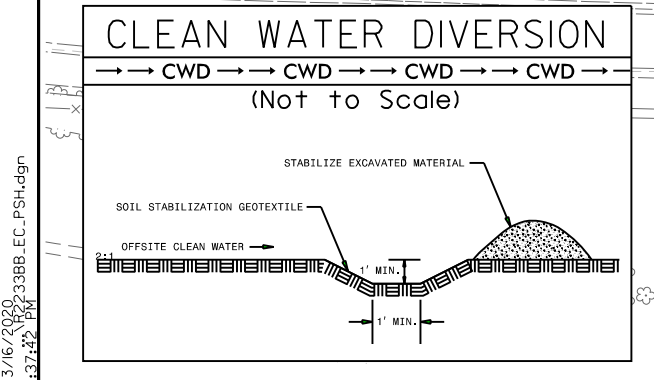
130 x 30 x 3
2 inch Skimmer
with 1.625 inch
Orifice Diameter
15 ft. weir
ID 11.9

70 x 20 x 3
1.5 inch Skimmer
with 1 inch
Orifice Diameter
5 ft. weir
ID 11.14

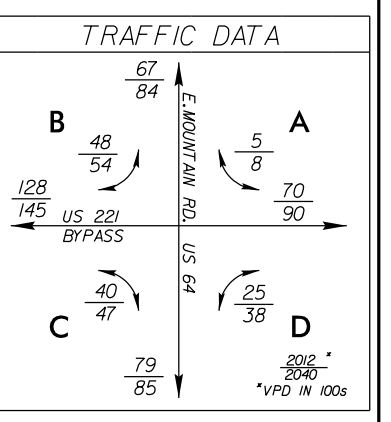
Place Matting for Erosion Control
on Slope as Work Allows.
Sta. 840+00 to Sta. 842+50 -L3- LI
Sta. 842+50 to Sta. 846+50 -L3- RI
Sta. 856+50 to Sta. 857+00 -L3- RI
Sta. 10+50 to Sta. 19+00 -LPA- LI
Sta. 10+50 to Sta. 25+85 -LPA- RI
Sta. 17+53 to Sta. 18+50 -LPA- LI
Sta. 15+50 to Sta. 25+50 -RPA- RI
Sta. 10+25 to Sta. 13+25 -RPA- LI
Sta. 13+00 to Sta. 28+50 -RPA- LI
Sta. 17+00 to Sta. 21+50 -RPA- RI
Sta. 15+50 to Sta. 17+50 -Y18- RI
Sta. 17+00 to Sta. 17+75 -Y18- LI
Sta. 16+50 to Sta. 28+00 -Y3- LI
Sta. 16+50 to Sta. 30+00 -Y3- RI
Sta. 23+00 to Sta. 23+50 -Y4- RI

16 x 32 x 3
1.5 inch Skimmer
with 0.5 inch
Orifice Diameter
4 ft. weir
ID 11.13

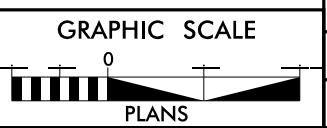
106 x 25 x 3
1.5 inch Skimmer
with 1.375 inch
Orifice Diameter
10 ft. weir
ID 11.10



PROJECT REFERENCE NO. P-223368	SHEET NO. EC-42/CONST. J
ROADWAY DESIGN ENGINEER	HYDRAULICS ENGINEER



SEE SHEETS AT R. 42 FOR -L3- PROFILE
SEE SHEET 68 FOR -Y18- PROFILE
SEE SHEETS 70 & 71 FOR -LPA- PROFILE
SEE SHEETS 67 & 68 FOR -RPA- PROFILE
SEE SHEETS 72 & 73 FOR -RPA- PROFILE
SEE SHEET 74 FOR -Y18- & -Y22- PROFILES
SEE SHEET 77 FOR -Y4- & -Y22- PROFILES
SEE SHEETS 64 THRU 66 FOR -Y3- PROFILE
SEE SHEET 28-3 FOR INTERSECTION DETAILS
SEE SHEET 28-4 FOR CONC. ISLAND DETAILS
SEE SHEETS 28-5 THRU 28-7 FOR DRAINAGE DETAILS



LOCATION:	COUNTY:
TRIP NO.:	DATE:
DESIGNED BY:	CHECKED BY:

★ PROPOSED SIGNAL