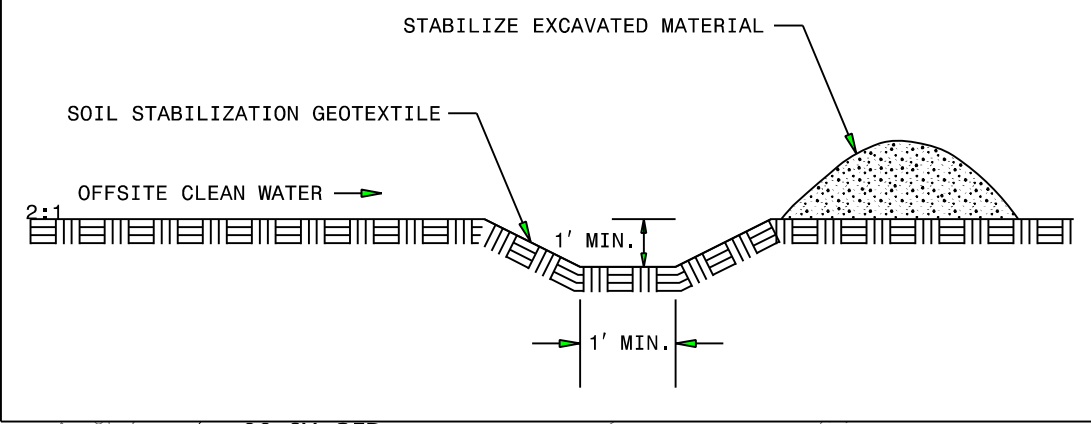


PROJECT REFERENCE NO.	SHEET NO.
R-2233BB	EC-39/CONST.10
RW SHEET NO.	
ROADWAY DESIGN ENGINEER	HYDRAULICS ENGINEER

Place Matting for Erosion Control  
on Slope as Work Allows.  
Sta. 822+50 to Sta. 838+00 -L3- Lt  
Sta. 828+00 to Sta. 839+50 -L3- Rt

**CLEAN WATER DIVERSION**  
→ CWD → CWD → CWD → CWD →  
(Not to Scale)



47 x 155 x 3  
2.5 inch Skimmer  
with 2.25 inch  
Orifice Diameter  
27 ft. weir  
ID 10.1

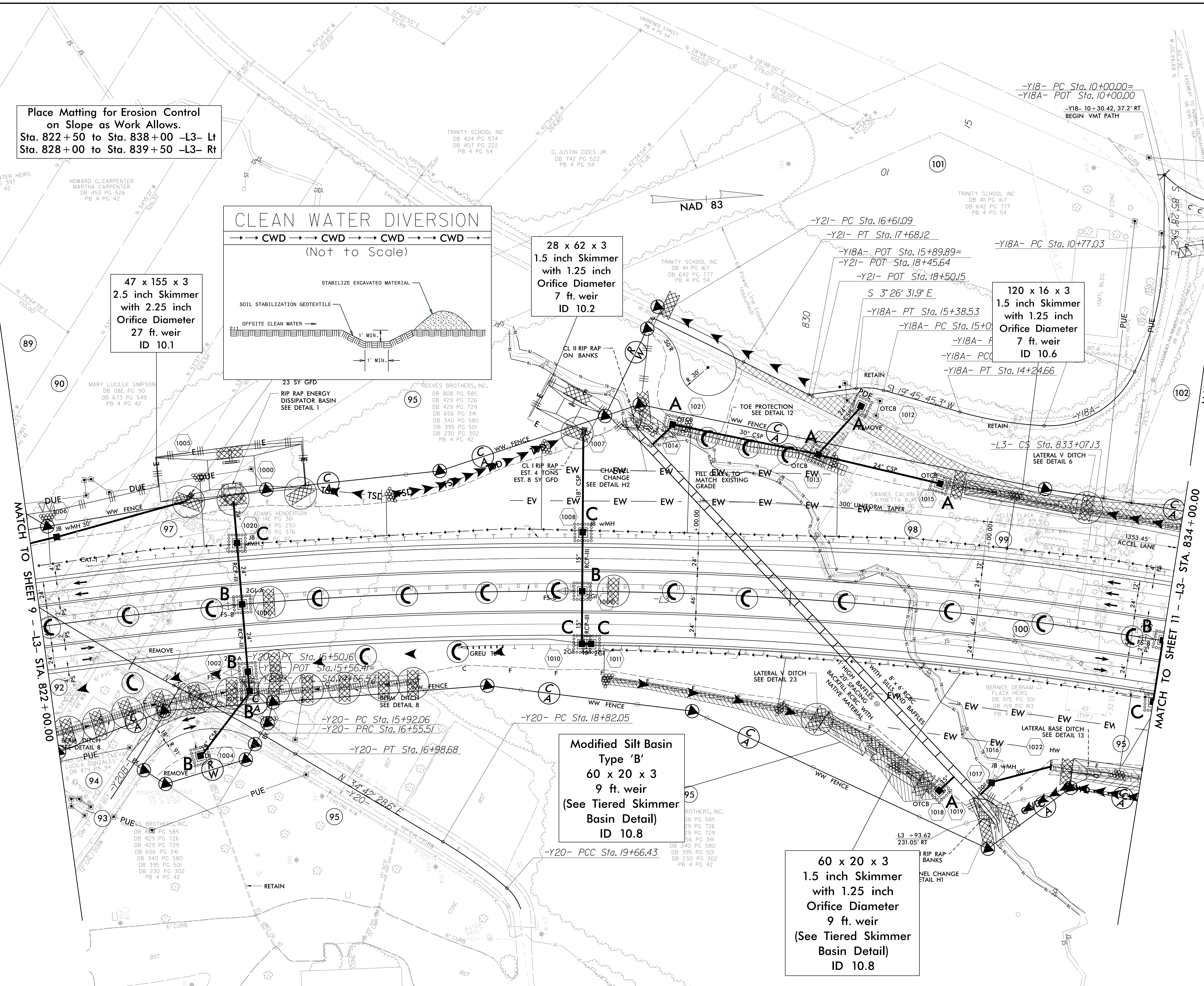
28 x 62 x 3  
1.5 inch Skimmer  
with 1.25 inch  
Orifice Diameter  
7 ft. weir  
ID 10.2

120 x 16 x 3  
1.5 inch Skimmer  
with 1.25 inch  
Orifice Diameter  
7 ft. weir  
ID 10.6

Modified Silt Basin  
Type 'B'  
60 x 20 x 3  
9 ft. weir  
(See Tiered Skimmer  
Basin Detail)  
ID 10.8

60 x 20 x 3  
1.5 inch Skimmer  
with 1.25 inch  
Orifice Diameter  
9 ft. weir  
(See Tiered Skimmer  
Basin Detail)  
ID 10.8

ROW REV. - December 21, 2017 - Parcel 95 - Revised PUE line to RW line (WET)  
ROW REV. - March 2, 2018 - Parcel 101 - Moved PUE off of school classroom (WET)  
ROW REV. - June 19, 2018 - Parcel 102 - Adjust boundary line & removed existing easement line (AMP)  
ROW REV. - June 19, 2018 - Parcel 103 - Adjust boundary line & removed existing easement line (AMP)  
ROW REV. - June 19, 2018 - Parcel 102 - Property owner name changed to Parton Family, LLC (AMP)



SEE SHEET 40 FOR -L3- PROFILE  
SEE SHEET 74 FOR -Y18- PROFILE  
SEE SHEETS 2D-1 THRU 2D-7 FOR DRAINAGE DETAILS