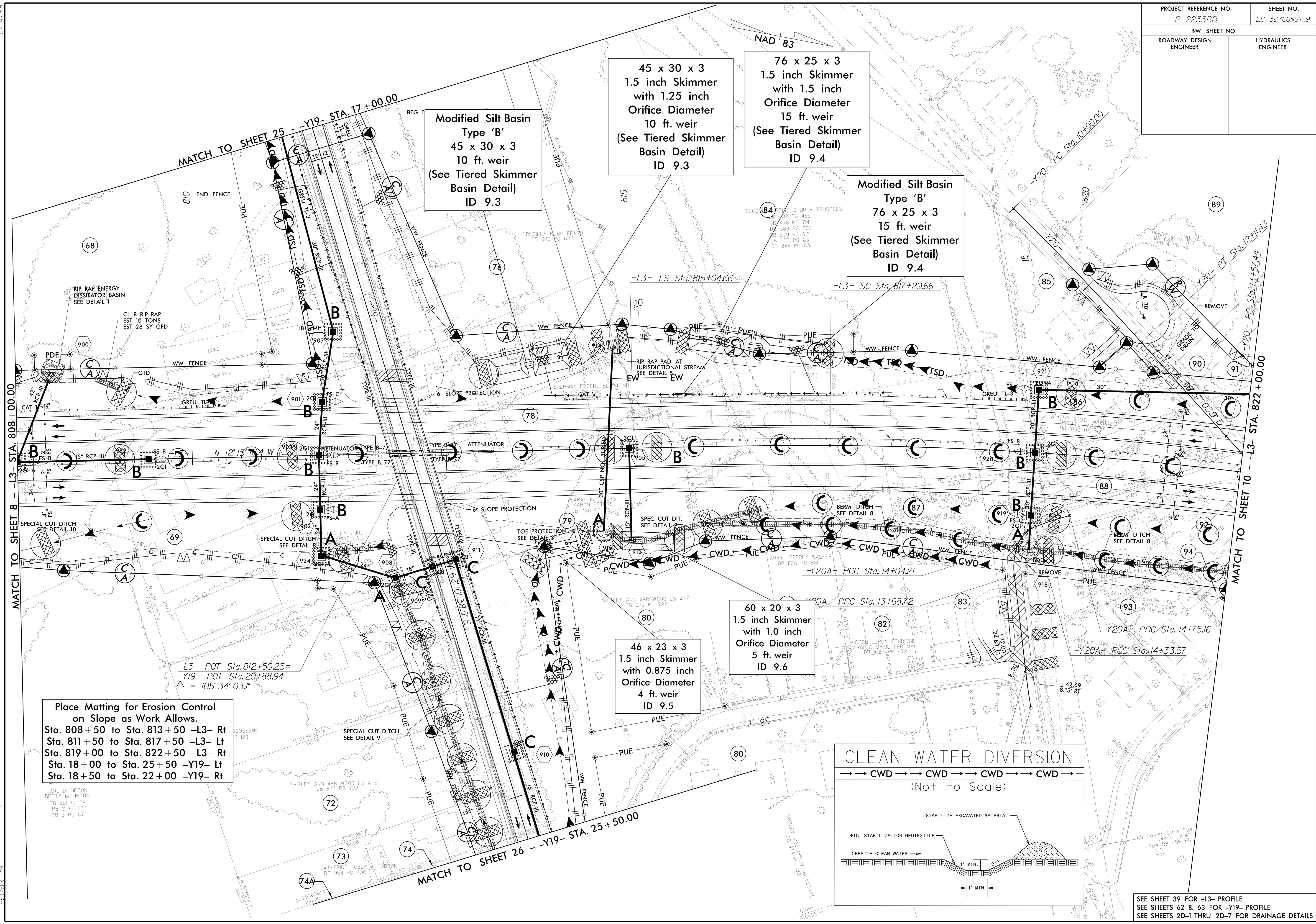


PROJECT REFERENCE NO.	SHEET NO.
R-2233BB	EC-38/CONST.9
RW SHEET NO.	
ROADWAY DESIGN ENGINEER	HYDRAULICS ENGINEER

ROW REV. - December 21, 2017 - Parcel 93 - Revised file at Y20A +60 to Y20A +68.88EX. RW (WET)
 ROW REV. - December 21, 2017 - Parcel 85 - Property owner name changed to Earl McEntire (WET)

3/16/2020
 5:37:10
 3/16/2020
 5:37:10
 3/16/2020
 5:37:10



Modified Silt Basin
 Type 'B'
 45 x 30 x 3
 10 ft. weir
 (See Tiered Skimmer
 Basin Detail)
 ID 9.3

45 x 30 x 3
 1.5 inch Skimmer
 with 1.25 inch
 Orifice Diameter
 10 ft. weir
 (See Tiered Skimmer
 Basin Detail)
 ID 9.3

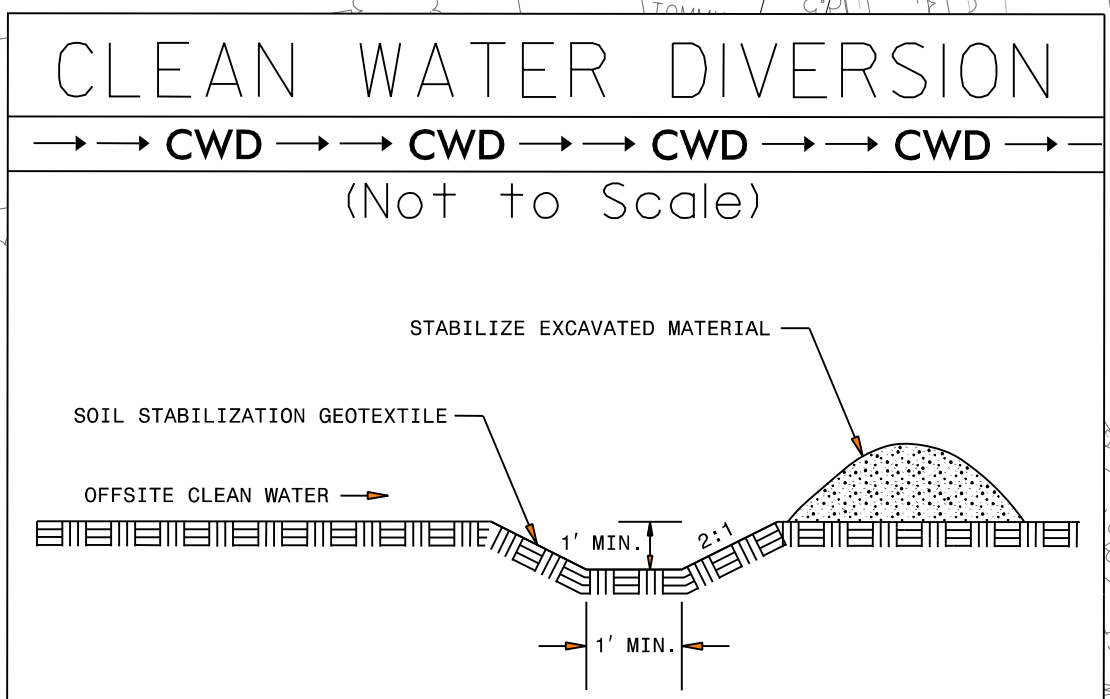
76 x 25 x 3
 1.5 inch Skimmer
 with 1.5 inch
 Orifice Diameter
 15 ft. weir
 (See Tiered Skimmer
 Basin Detail)
 ID 9.4

Modified Silt Basin
 Type 'B'
 76 x 25 x 3
 15 ft. weir
 (See Tiered Skimmer
 Basin Detail)
 ID 9.4

46 x 23 x 3
 1.5 inch Skimmer
 with 0.875 inch
 Orifice Diameter
 4 ft. weir
 ID 9.5

60 x 20 x 3
 1.5 inch Skimmer
 with 1.0 inch
 Orifice Diameter
 5 ft. weir
 ID 9.6

Place Matting for Erosion Control
 on Slope as Work Allows.
 Sta. 808+50 to Sta. 813+50 -L3- Rt
 Sta. 811+50 to Sta. 817+50 -L3- Lt
 Sta. 819+00 to Sta. 822+50 -L3- Rt
 Sta. 18+00 to Sta. 25+50 -Y19- Lt
 Sta. 18+50 to Sta. 22+00 -Y19- Rt



SEE SHEET 39 FOR -L3- PROFILE
 SEE SHEETS 62 & 63 FOR -Y19- PROFILE
 SEE SHEETS 2D-1 THRU 2D-7 FOR DRAINAGE DETAILS