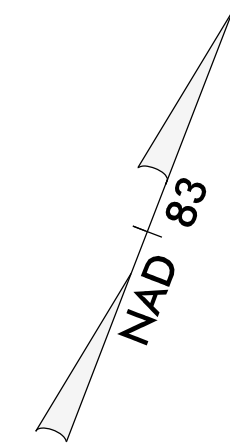


PROJECT REFERENCE NO.	SHEET NO.
R-2233BB	EC-32/CONST.32
RW SHEET NO.	
ROADWAY DESIGN ENGINEER	HYDRAULICS ENGINEER



Modified Silt Basin
Type 'B'
20 x 84 x 3
13 ft. weir
(See Tiered Skimmer
Basin Detail)
ID 32.3

20 x 84 x 3
1.5 inch Skimmer
with 1.375 inch
Orifice Diameter
13 ft. weir
(See Tiered Skimmer
Basin Detail)
ID 32.3

16 x 56 x 3
1.5 inch Skimmer
with 0.75 inch
Orifice Diameter
4 ft. weir
ID 32.5

CLEARING AND GRUBBING
EROSION CONTROL FOR
CONSTRUCTION SHEET 32

NOTE:
PLACE TEMPORARY ROCK SEDIMENT DAMS TYPE - B
AND TEMPORARY ROCK SILT CHECKS TYPE - A AT
DRAINAGE OUTLETS.

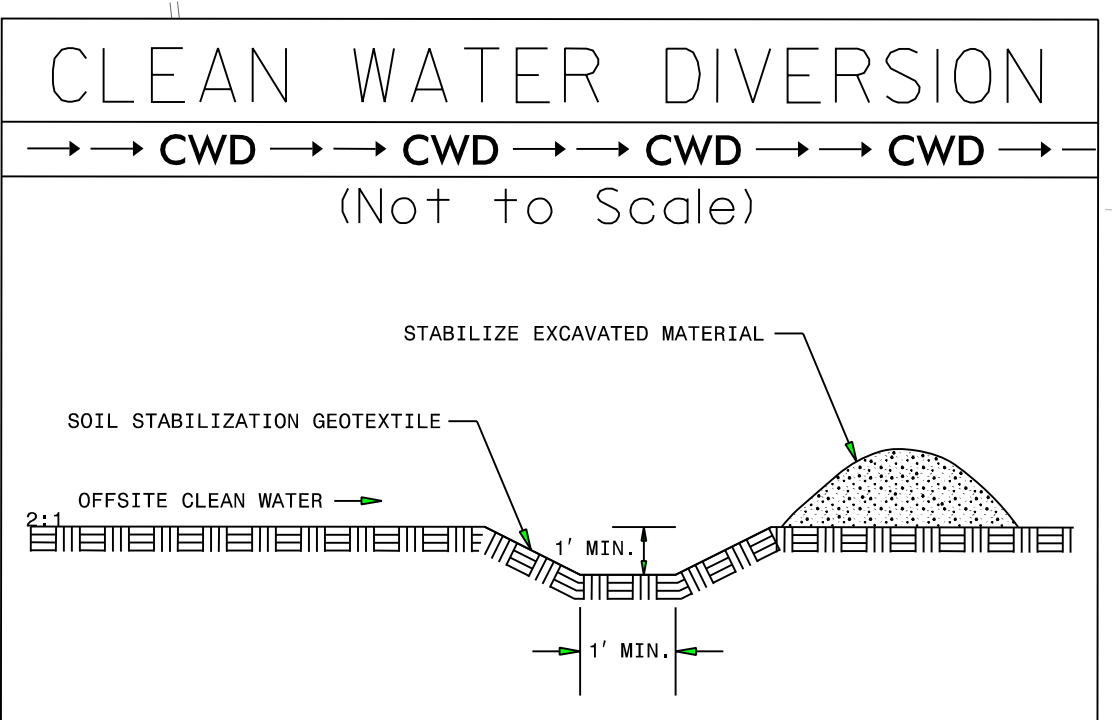
Modified Silt Basin
Type 'B'
46 x 35 x 3
12 ft. weir
(See Tiered Skimmer
Basin Detail)
ID 32.1

46 x 35 x 3
1.5 inch Skimmer
with 1.375 inch
Orifice Diameter
12 ft. weir
(See Tiered Skimmer
Basin Detail)
ID 32.1

Modified Silt Basin
Type 'B'
26 x 108 x 3
21 ft. weir
(See Tiered Skimmer
Basin Detail)
ID 32.2

26 x 108 x 3
2 inch Skimmer
with 1.75 inch
Orifice Diameter
21 ft. weir
(See Tiered Skimmer
Basin Detail)
ID 32.2

20 x 62 x 3
1.5 inch Skimmer
with 1.0 inch
Orifice Diameter
5 ft. weir
ID 32.4



END CONSTRUCTION
-YII- POT Sta. 28+00

SEE SHEETS 81 & 82 FOR -YII- PROFILE
SEE SHEETS 2D-1 THRU 2D-7 FOR DRAINAGE DETAILS

ROW REV. - December 21, 2017 - Parcel 174 - Added a note to abandon existing RW (WET)

3/17/2020
9:01:32 AM
3/17/2020
9:01:32 AM
3/17/2020
9:01:32 AM

