

PROJECT REFERENCE NO.	SHEET NO.
R-2233BB	EC-22/CONST.22
RW SHEET NO.	
ROADWAY DESIGN ENGINEER	HYDRAULICS ENGINEER

CLEARING AND GRUBBING
EROSION CONTROL FOR
CONSTRUCTION SHEET 22

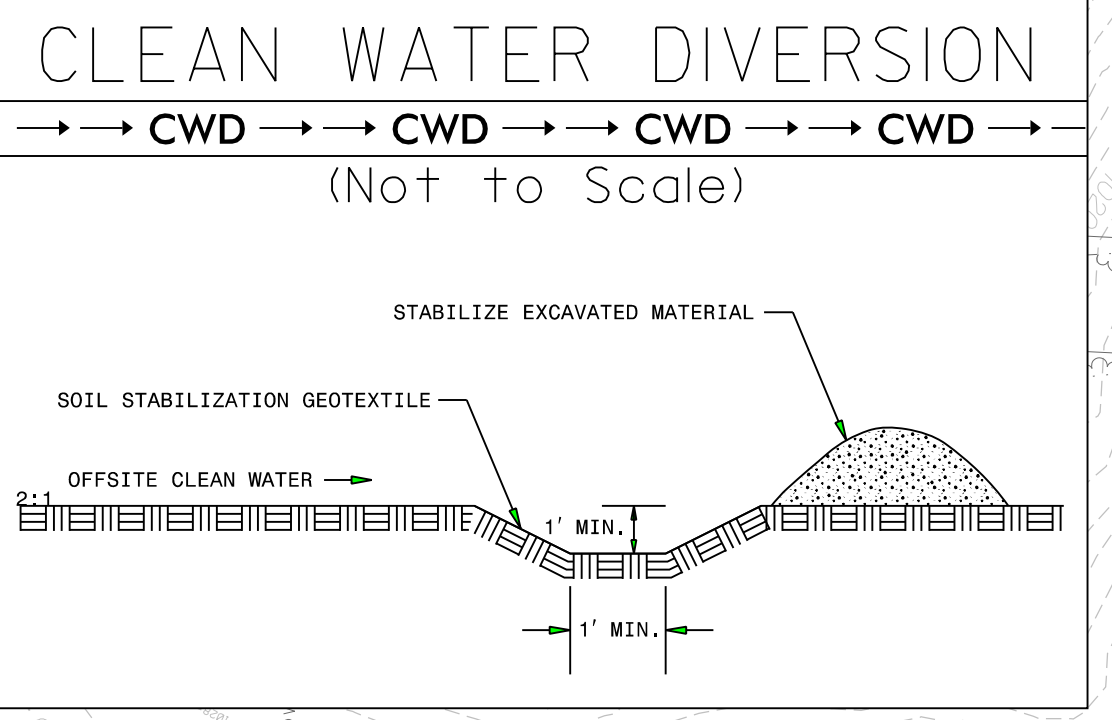
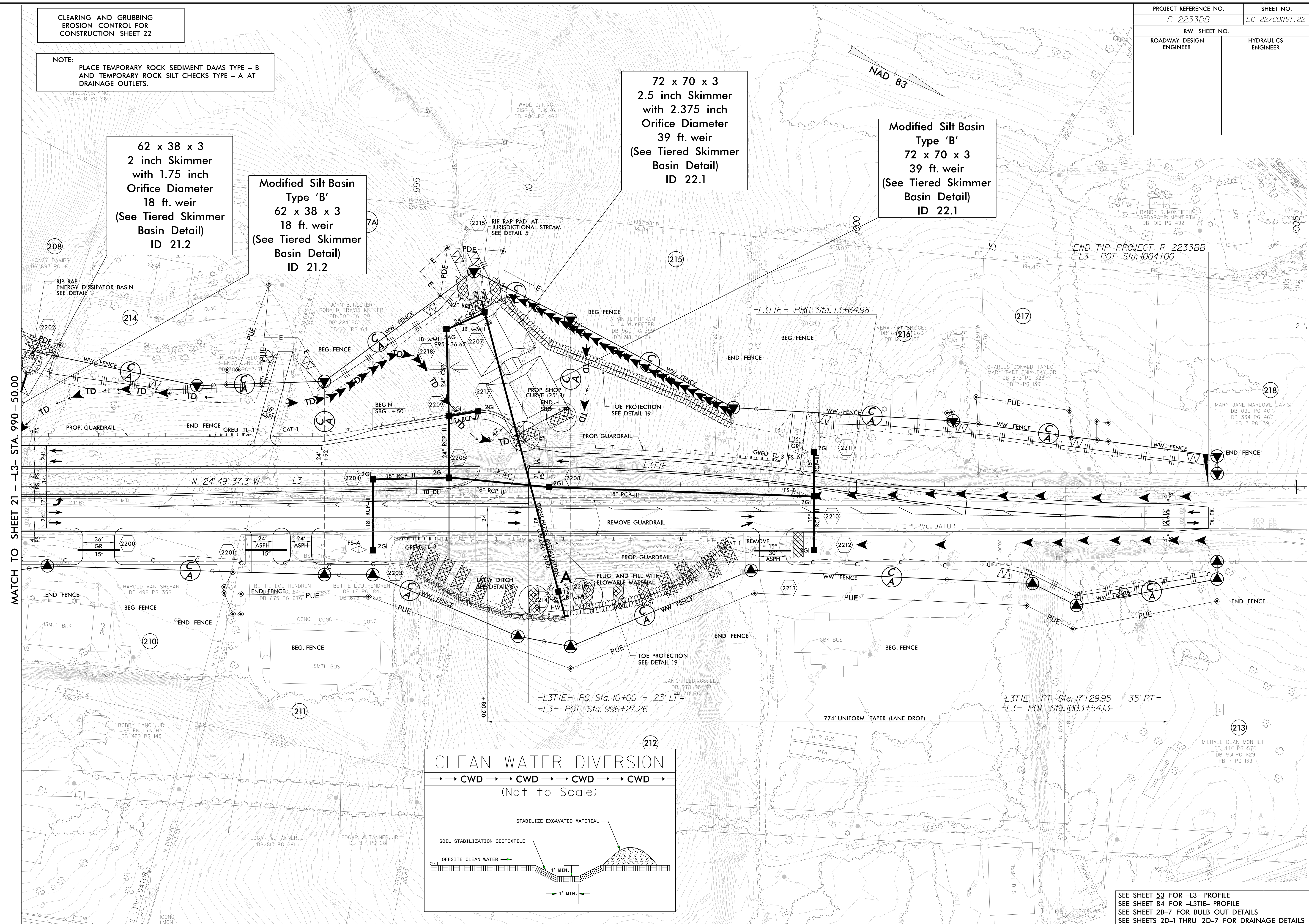
NOTE:
PLACE TEMPORARY ROCK SEDIMENT DAMS TYPE - B
AND TEMPORARY ROCK SILT CHECKS TYPE - A AT
DRAINAGE OUTLETS.

62 x 38 x 3
2 inch Skimmer
with 1.75 inch
Orifice Diameter
18 ft. weir
(See Tiered Skimmer
Basin Detail)
ID 21.2

Modified Silt Basin
Type 'B'
62 x 38 x 3
18 ft. weir
(See Tiered Skimmer
Basin Detail)
ID 21.2

72 x 70 x 3
2.5 inch Skimmer
with 2.375 inch
Orifice Diameter
39 ft. weir
(See Tiered Skimmer
Basin Detail)
ID 22.1

Modified Silt Basin
Type 'B'
72 x 70 x 3
39 ft. weir
(See Tiered Skimmer
Basin Detail)
ID 22.1



SEE SHEET 53 FOR -L3- PROFILE
SEE SHEET 84 FOR -L3TIE- PROFILE
SEE SHEET 2B-7 FOR BULB OUT DETAILS
SEE SHEETS 2D-1 THRU 2D-7 FOR DRAINAGE DETAILS

ROW REV. - December 21, 2017 - Parcel 208 - Added PDE line (WET)

3/16/2020
33BB-EC_PSH.dgn
5:44:38 PM

5/14/99