

PROJECT REFERENCE NO.	SHEET NO.
R-2233BB	EC-4/CONST.4
RW SHEET NO.	
ROADWAY DESIGN ENGINEER	HYDRAULICS ENGINEER
<b>DOCUMENT NOT CONSIDERED FINAL UNLESS ALL SIGNATURES COMPLETED</b>	

65 x 23 x 3  
1.5 inch Skimmer  
with 1.125 inch  
Orifice Diameter  
6 ft. weir  
ID 4.5

CLEARING AND GRUBBING  
EROSION CONTROL FOR  
CONSTRUCTION SHEET 4

NOTE:  
PLACE TEMPORARY ROCK SEDIMENT DAMS TYPE - B  
AND TEMPORARY ROCK SILT CHECKS TYPE - A AT  
DRAINAGE OUTLETS.

NOTE:  
UTILIZE FABRIC INSERT INLET PROTECTION DEVICES  
IN LIEU OF ROCK INLET SEDIMENT TRAPS, TYPE-C  
AS DIRECTED BY ENGINEER.

40 x 16 x 3  
1.5 inch Skimmer  
with 0.875 inch  
Orifice Diameter  
5 ft. weir  
(See Tiered Skimmer  
Basin Detail)  
ID 4.4A

Modified Silt Basin  
Type 'B'  
40 x 16 x 3  
5 ft. weir  
(See Tiered Skimmer  
Basin Detail)  
ID 4.4B

125 x 35 x 3  
2 inch Skimmer  
with 1.75 inch  
Orifice Diameter  
16 ft. weir  
ID 4.1

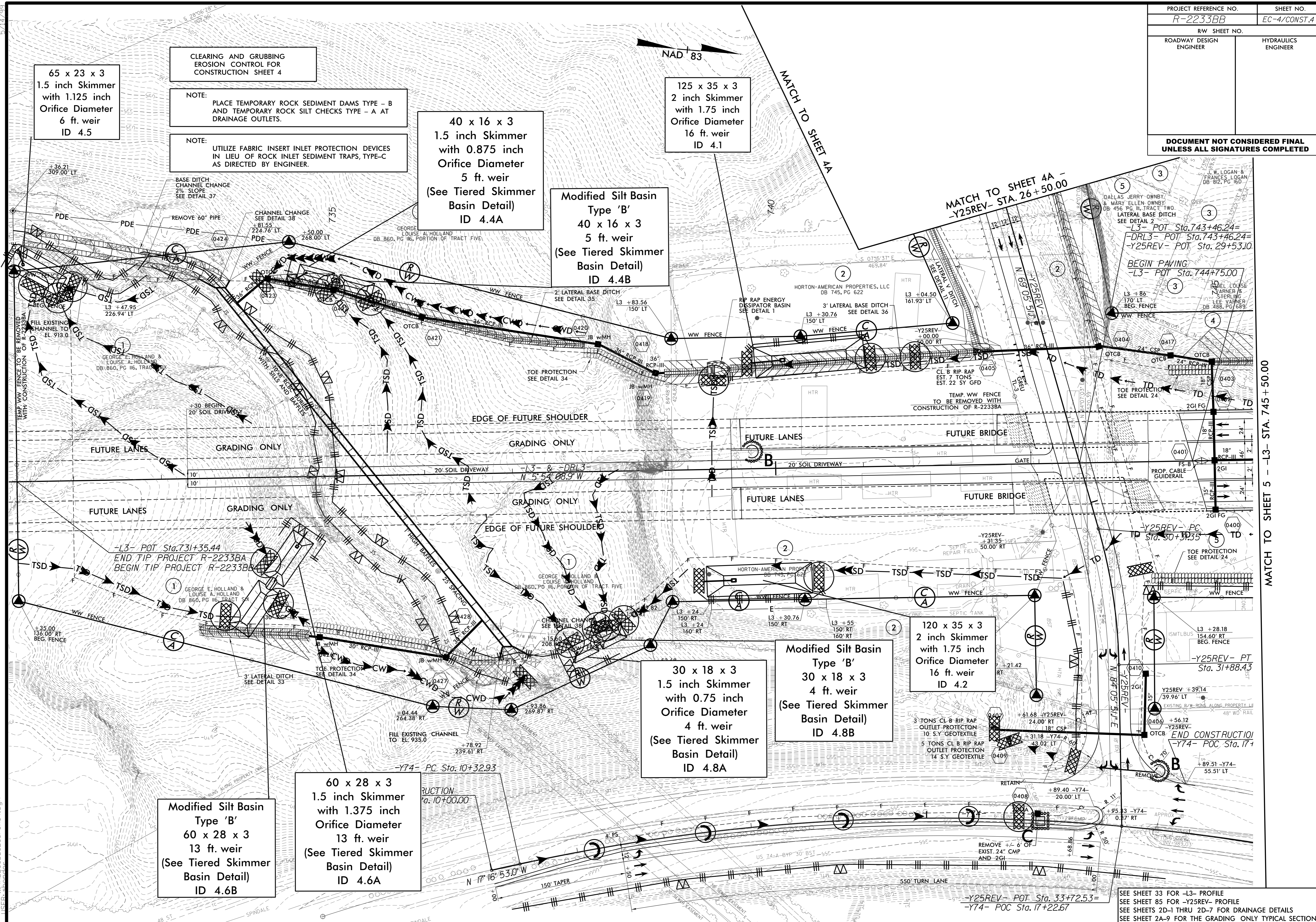
30 x 18 x 3  
1.5 inch Skimmer  
with 0.75 inch  
Orifice Diameter  
4 ft. weir  
(See Tiered Skimmer  
Basin Detail)  
ID 4.8A

Modified Silt Basin  
Type 'B'  
30 x 18 x 3  
4 ft. weir  
(See Tiered Skimmer  
Basin Detail)  
ID 4.8B

120 x 35 x 3  
2 inch Skimmer  
with 1.75 inch  
Orifice Diameter  
16 ft. weir  
ID 4.2

Modified Silt Basin  
Type 'B'  
60 x 28 x 3  
13 ft. weir  
(See Tiered Skimmer  
Basin Detail)  
ID 4.6B

60 x 28 x 3  
1.5 inch Skimmer  
with 1.375 inch  
Orifice Diameter  
13 ft. weir  
(See Tiered Skimmer  
Basin Detail)  
ID 4.6A



4/24/2021 8:23:43 AM EC.PSH.4.dgn