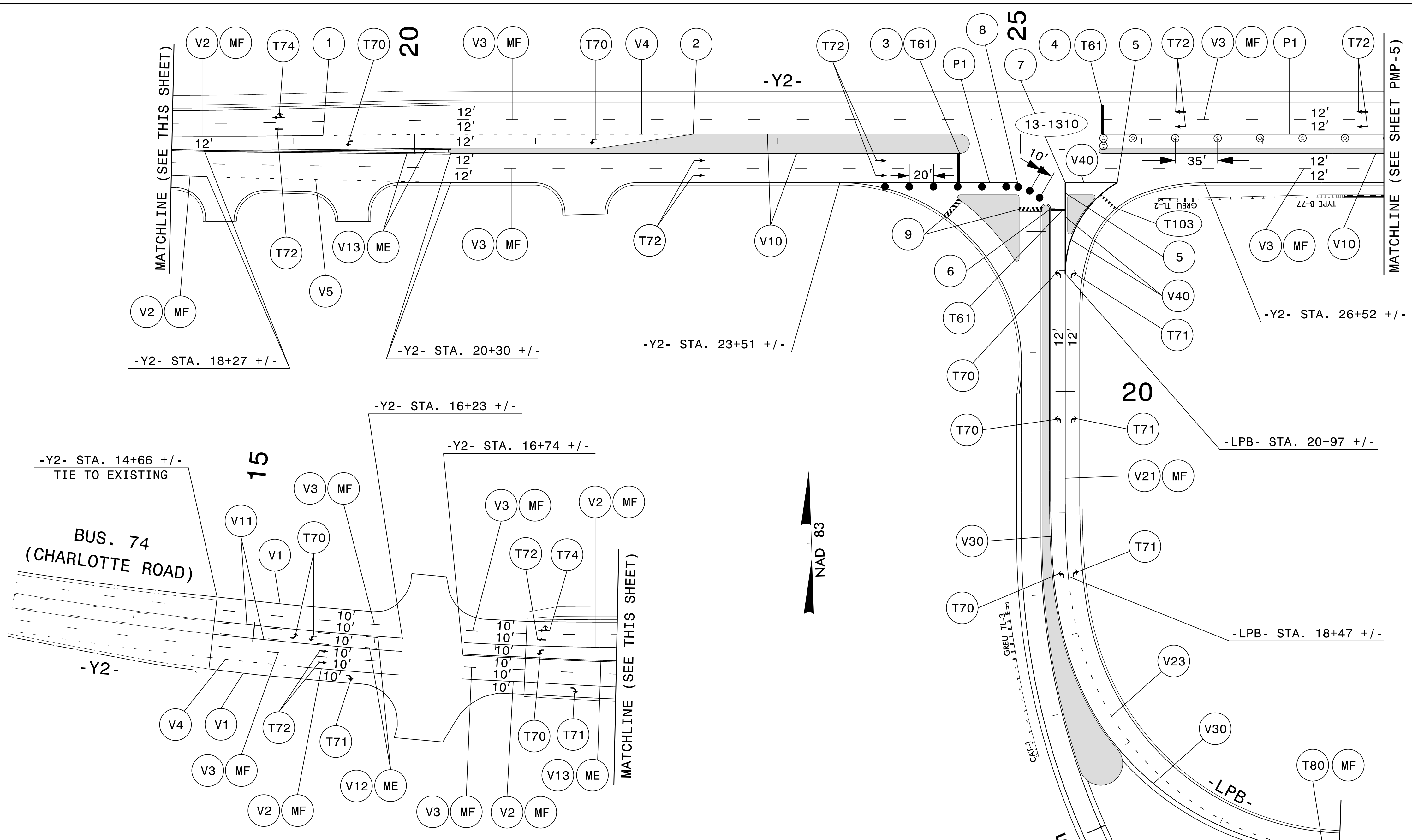
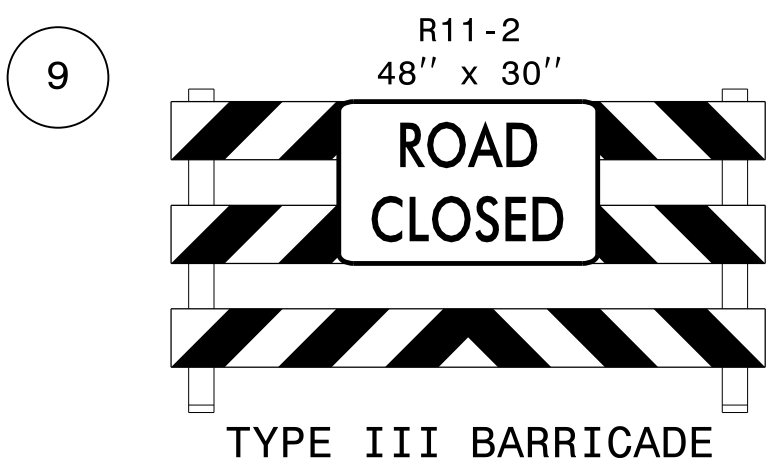


TIP NO. R-2233BB	SHEET NO. PMP-25
APPROVED: _____	
DATE: _____	
SEAL	
DOCUMENT NOT CONSIDERED FINAL UNLESS ALL SIGNATURES COMPLETED	



SEE SIGNAL PLANS FOR
FINAL STOP BAR LOCATIONS

- 1 -Y2- STA. 19+25 +/-
- 2 -Y3- STA. 22+30 +/-
- 3 -Y2- STA. 24+50 +/-
- 4 -Y2- STA. 25+67 +/-
- 5 -Y2- STA. 25+80 +/-
- 6 -LPB- STA. 21+51 +/-
- 7 -Y2- STA. 25+37 +/-
- 8 -Y2- STA. 25+00 +/-



PAVEMENT MARKING SCHEDULE

PAVEMENT MARKING LINES		PAVEMENT MARKING SYMBOLS			
P1	WHITE EDGELINE	PAINT (4")			
T61	WHITE STOPBAR	THERMOPLASTIC (24", 90 mils)			
T103	YIELD LINE TRIANGLE	THERMOPLASTIC (24")			
V1	WHITE EDGELINE	POLYUREA (4", 20 mils)	T70	LEFT TURN ARROW	THERMOPLASTIC
V2	WHITE SOLID LANE LINE	POLYUREA (4", 20 mils)	T71	RIGHT TURN ARROW	THERMOPLASTIC
V3	10 FT. WHITE SKIP	POLYUREA (4", 20 mils)	T72	STRAIGHT ARROW	THERMOPLASTIC
V4	3' - 9" SP WHITE MINISKIP	POLYUREA (4", 20 mils)	T74	COMBO STRAIGHT / RIGHT ARROW	THERMOPLASTIC
V5	2' - 6" SP WHITE MINISKIP	POLYUREA (4", 20 mils)	T80	WRONG WAY RAMP ARROW	THERMOPLASTIC
V10	YELLOW EDGELINE	POLYUREA (4", 20 mils)			
V11	YELLOW SINGLE CENTER LINE	POLYUREA (4", 20 mils)	ME	YELLOW AND YELLOW	PERMANENT SNOWPLOWABLE
V12	10 FT. YELLOW SKIP	POLYUREA (4", 20 mils)	MF	CRYSTAL AND RED	PERMANENT SNOWPLOWABLE
V13	YELLOW DOUBLE CENTER LINE	POLYUREA (4", 20 mils)			
V20	WHITE EDGELINE	POLYUREA (6", 20 mils)			
V21	WHITE SOLID LANE LINE	POLYUREA (6", 20 mils)			
V23	3' - 9" SP WHITE MINISKIP	POLYUREA (6", 20 mils)			
V30	YELLOW EDGELINE	POLYUREA (6", 20 mils)			
V40	WHITE GORE LINE	POLYUREA (8", 20 mils)			

LEGEND

- 13-XXXX SIGNAL INVENTORY NUMBER
- TUBULAR MARKER
- DRUM
- ▩ TYPE III BARRICADE

PAVEMENT MARKING DETAIL

I6-APP-2020_1042
 P:\500715\20\CAD\CIVIL\N-2233BB\Tr of fic\PM\Plans\R2233BB_PMP_PMP_25.dgn
 J:\wiles

2610 WYCLIFF ROAD
SUITE 410
RALEIGH, NC 27607
PHONE: 919-881-9939
NC COA No. F-0929