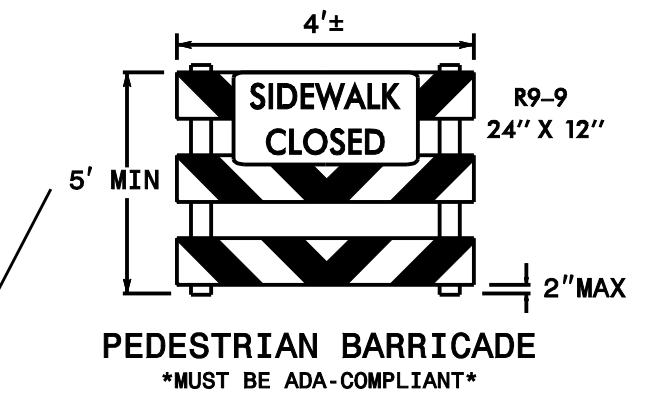
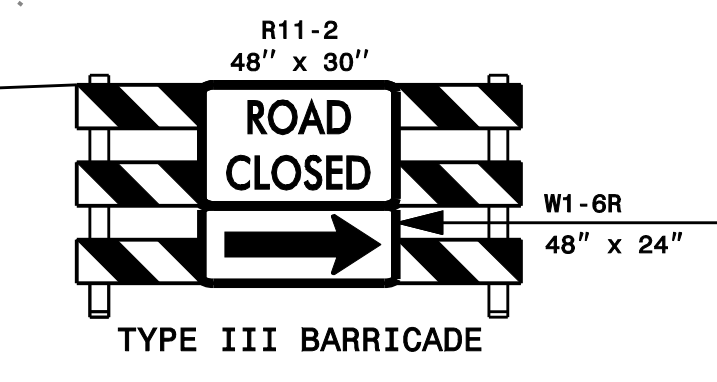


INSTALL PERMANENT SIGNS FROM THE SIGNING PLAN PRIOR TO OPENING PROPOSED -TR2-

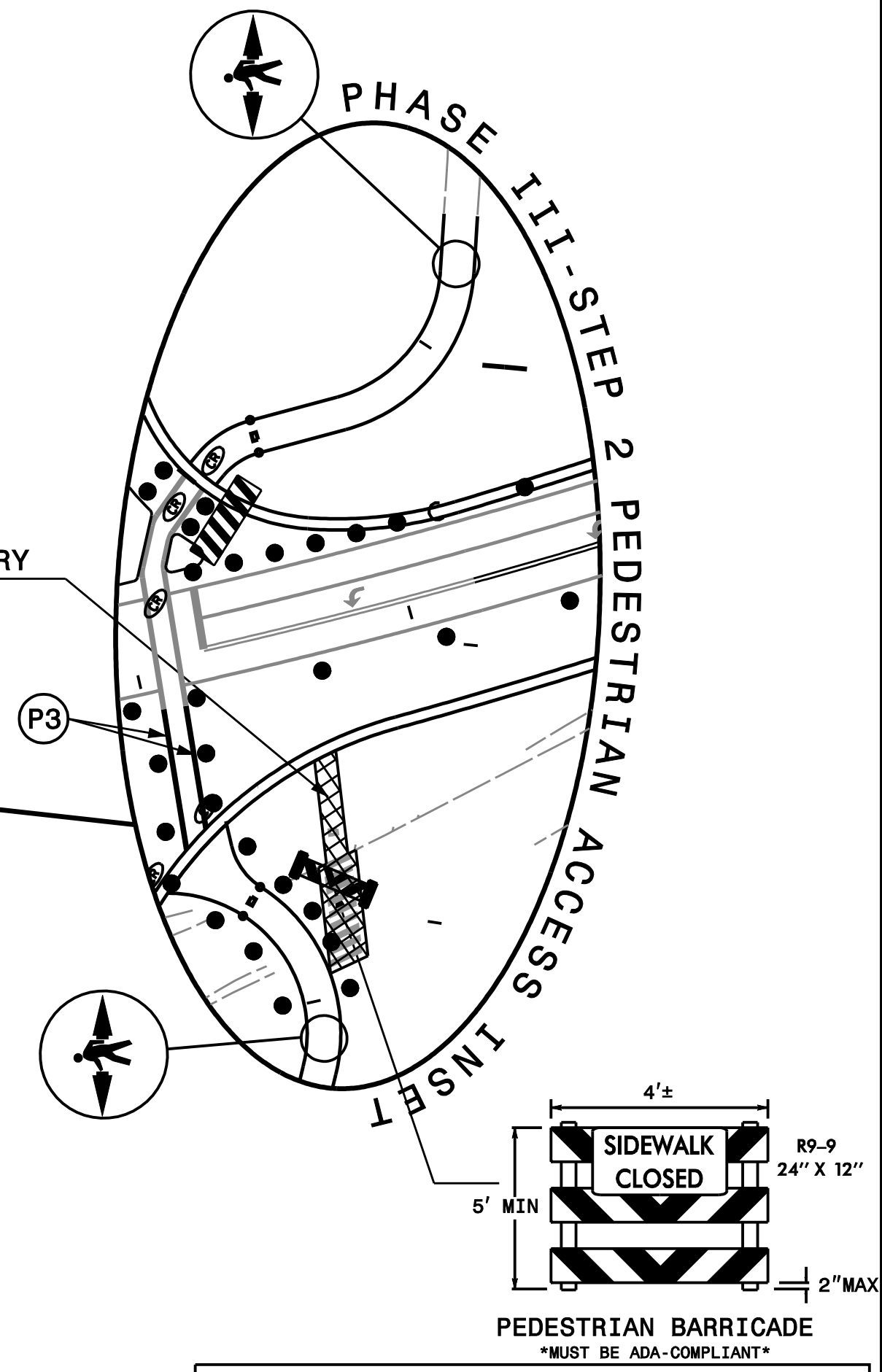
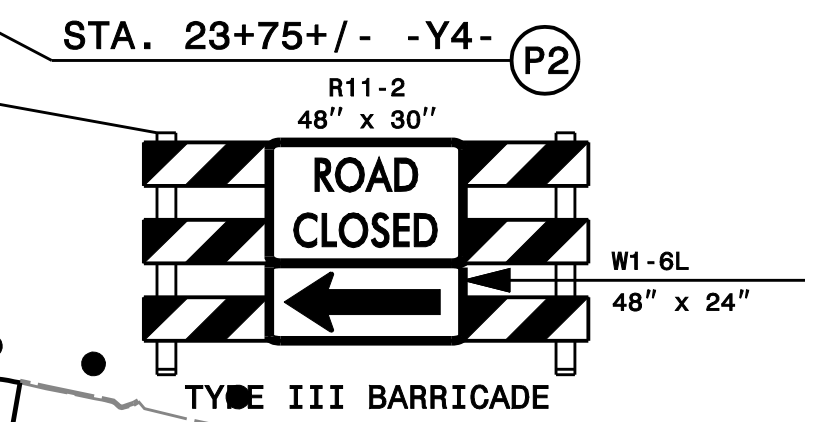


REMOVE TEMPORARY SIDEWALK

STA. 34+75+/- -Y3-  
STA. 36+00+/- -Y3-



INSTALL PERMANENT SIGNS FROM THE SIGNING PLAN PRIOR TO OPENING PROPOSED -TR2-



MATCHLINE SEE SHEET TMP-63

NOTE:  
ALL PAVEMENT MARKINGS ARE EXISTING MARKINGS UNLESS OTHERWISE NOTED

PLAN PREPARED IN THE OFFICE OF: <b>PROGRESSIVE DESIGN GROUP, INC.</b> ENGINEERS • CONSULTANTS	APPROVED: <i>[Signature]</i> DATE: 09/22/23	DIVISION OF HIGHWAYS STATE OF NORTH CAROLINA DEPARTMENT OF TRANSPORTATION WORK ZONE TRAFFIC CONTROL	TRANSPORTATION MANAGEMENT PLAN PHASE III DETAILS
	SEAL 		