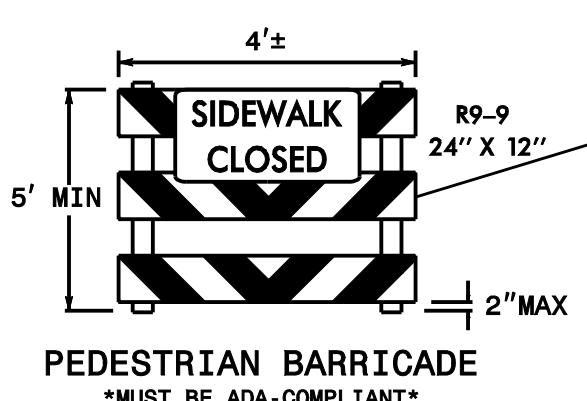
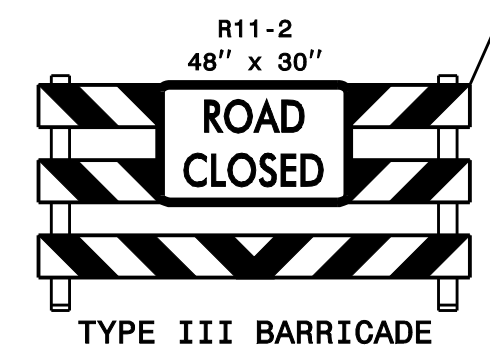
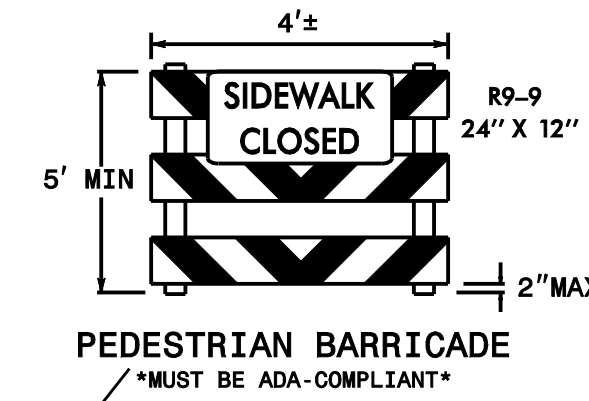
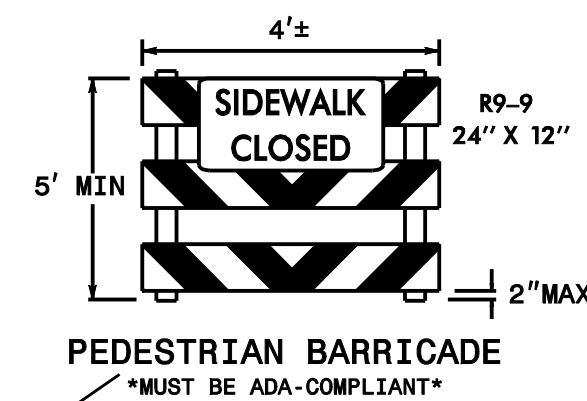
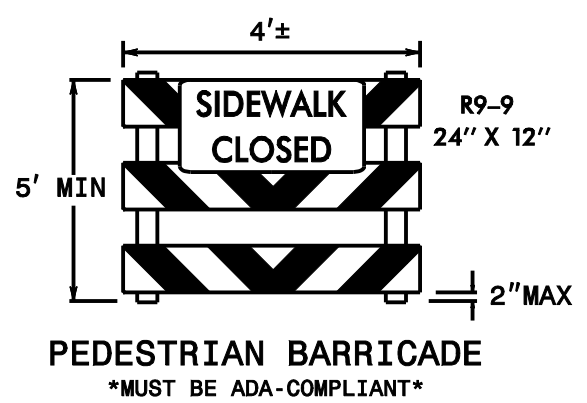
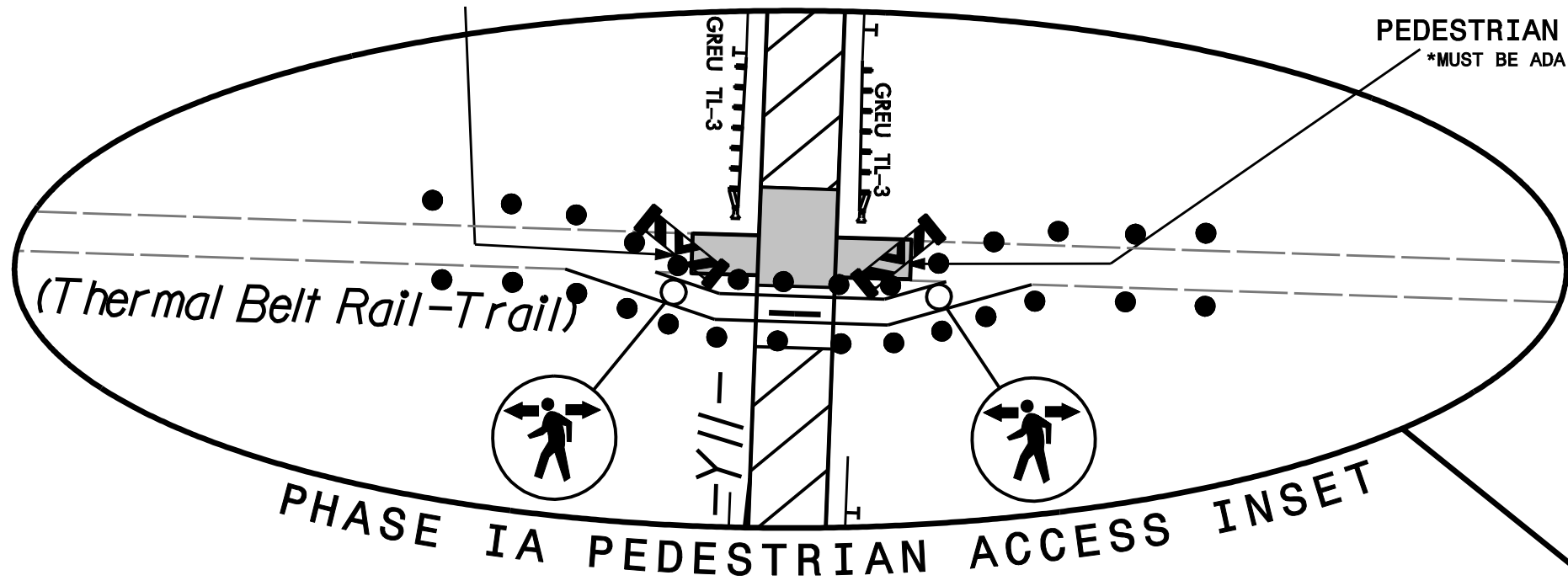


DELAY OF ENTRY WORKZONE AREA
 WORK ASSOCIATED WITH -L3- FROM
 STA. 941+00 TO STA. 1004+00
 WILL NOT BE AVAILABLE UNTIL
 JANUARY 1, 2023.

DELAY OF ENTRY WORKZONE AREA
 WORK ASSOCIATED WITH -L3- FROM
 STA. 941+00 TO STA. 1004+00
 WILL NOT BE AVAILABLE UNTIL
 JANUARY 1, 2023.



8' WIDE TEMPORARY PAVEMENT FOR -TR3-
 USE TYPICAL 12 FROM THE ROADWAY DESIGN
 PLANS FOR TEMPORARY PEDESTRIAN PATHS.



DOCUMENT NOT CONSIDERED FINAL
 UNLESS ALL SIGNATURES COMPLETED

NOTE:
 ALL PAVEMENT MARKINGS ARE EXISTING
 MARKINGS UNLESS OTHERWISE NOTED

PLAN PREPARED IN THE OFFICE OF:
PROGRESSIVE
 DESIGN GROUP, INC.
 ENGINEERS • CONSULTANTS

APPROVED: [Signature] DATE: 11/02/21
 SEAL
 NORTH CAROLINA PROFESSIONAL ENGINEER
 SEAL 025465
 TIME ARE

DIVISION OF HIGHWAYS
 STATE OF NORTH CAROLINA
 DEPARTMENT OF TRANSPORTATION
 WORK ZONE TRAFFIC CONTROL

TRANSPORTATION
 MANAGEMENT PLAN
 PHASE I DETAILS

MATCHLINE SEE SHEET TMP-21