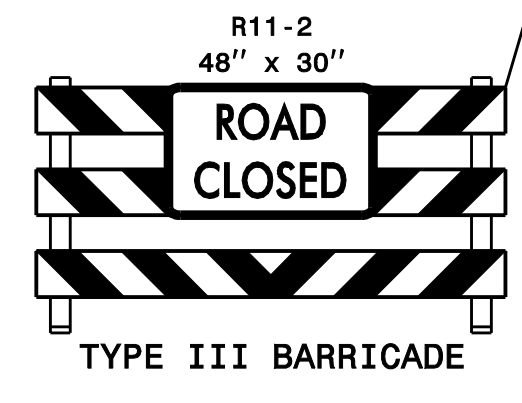
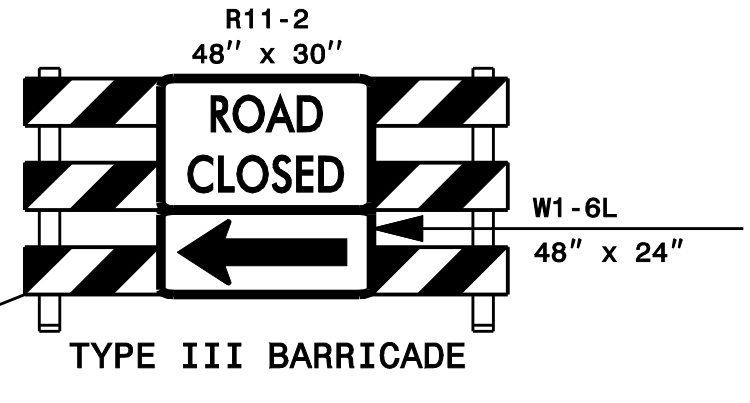
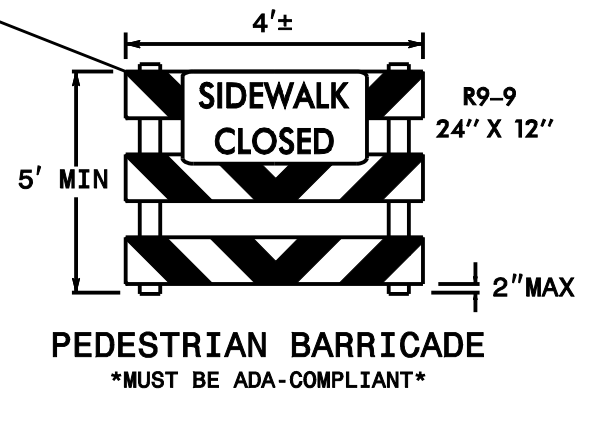
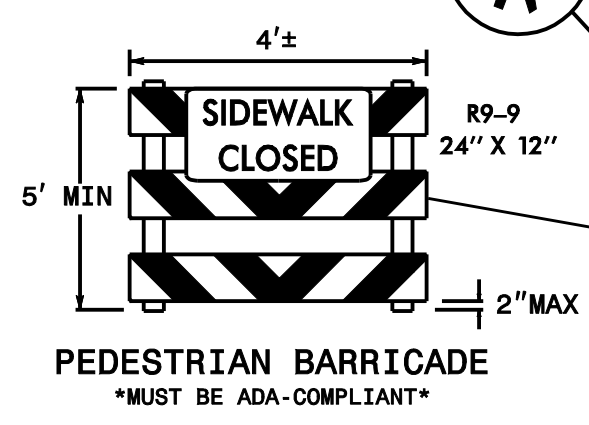


PHASE I INSET

PHASE I PEDESTRIAN ACCESS INSET



8' WIDE TEMPORARY PAVEMENT FOR -TR2- USE TYPICAL 12 FROM THE ROADWAY DESIGN PLANS FOR TEMPORARY PEDESTRIAN PATHS.

SEE SHEETS TMP-20 THRU TMP-24 FOR DETAIL VIEWS OF -L3-

DOCUMENT NOT CONSIDERED FINAL UNLESS ALL SIGNATURES COMPLETED

PROGRESSIVE DESIGN GROUP, INC.
ENGINEERS • CONSULTANTS

APPROVED: *[Signature]* DATE: 11/02/21

SEAL

TRANSPORTATION MANAGEMENT PLAN PHASE I OVERVIEWS