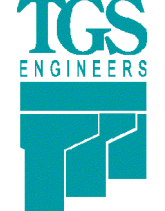


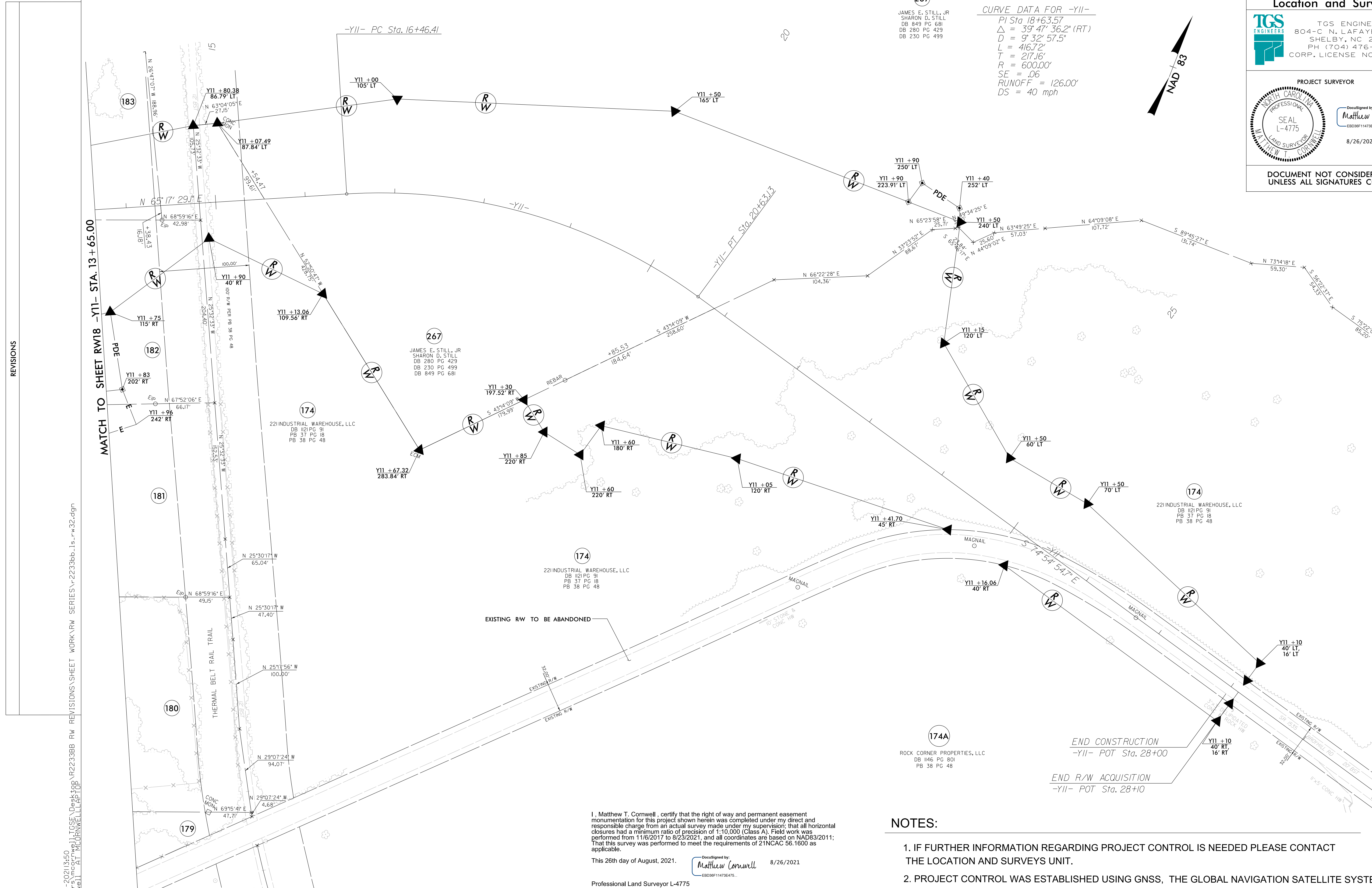
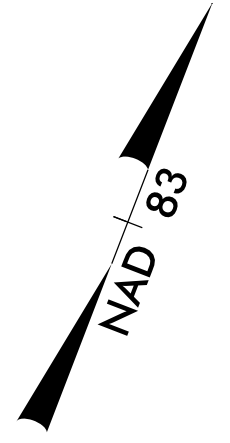


|   |  |
|---|--|
| PROJECT REFERENCE NO.<br>R-2233BB   | SHEET NO.<br>RW32  |
| <b>Location and Surveys</b>   |  |
|  <b>TGS ENGINEERS</b><br>804-C N. LAFAYETTE ST<br>SHELBY, NC 28150<br>PH (704) 476-0003<br>CORP. LICENSE NO.: C-0275 |  |
| PROJECT SURVEYOR  |  |
| <br>SEAL<br>L-4775<br>MATTHEW T. CORNWELL  | DocuSigned by:<br><br>Matthew Cornwell<br>EBO30F11473E475...<br>8/26/2021 |
| DOCUMENT NOT CONSIDERED FINAL UNLESS ALL SIGNATURES COMPLETED   |  |

(267)  
 JAMES E. STILL, JR  
 SHARON D. STILL  
 DB 849 PG 681  
 DB 280 PG 429  
 DB 230 PG 499

**CURVE DATA FOR -Y11-**  
 PI Sta. 18+63.57  
 $\Delta = 39^{\circ} 47' 36.2''$  (RT)  
 $D = 9^{\circ} 32' 57.5''$   
 $L = 416.72'$   
 $T = 217.16'$   
 $R = 600.00'$   
 $SE = .06$   
 $RUNOFF = 126.00'$   
 $DS = 40$  mph




MATCH TO SHEET RW18 -Y11- STA. 13 + 65.00

REVISIONS

25-AUG-2021 13:50  
 C:\Users\mccornwell\OneDrive\Documents\Projects\2233BB\RW REVISIONS\SHEET WORK\RW SERIES\R-2233BB-1s-rw32.dgn  
 MATTHEW T. CORNWELL

I, Matthew T. Cornwell, certify that the right of way and permanent easement monumentation for this project shown herein was completed under my direct and responsible charge from an actual survey made under my supervision; that all horizontal closures had a minimum ratio of precision of 1:10,000 (Class A). Field work was performed from 11/6/2017 to 8/23/2021, and all coordinates are based on NAD83/2011; That this survey was performed to meet the requirements of 21NCAC 56.1600 as applicable.

This 26th day of August, 2021.  8/26/2021  
 Professional Land Surveyor L-4775

**NOTES:**

1. IF FURTHER INFORMATION REGARDING PROJECT CONTROL IS NEEDED PLEASE CONTACT THE LOCATION AND SURVEYS UNIT.
2. PROJECT CONTROL WAS ESTABLISHED USING GNSS, THE GLOBAL NAVIGATION SATELLITE SYSTEM.
3. RIGHT OF WAY MONUMENTATION ESTABLISHED 11/6/2017 TO 8/23/2021 .