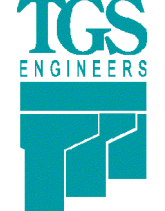

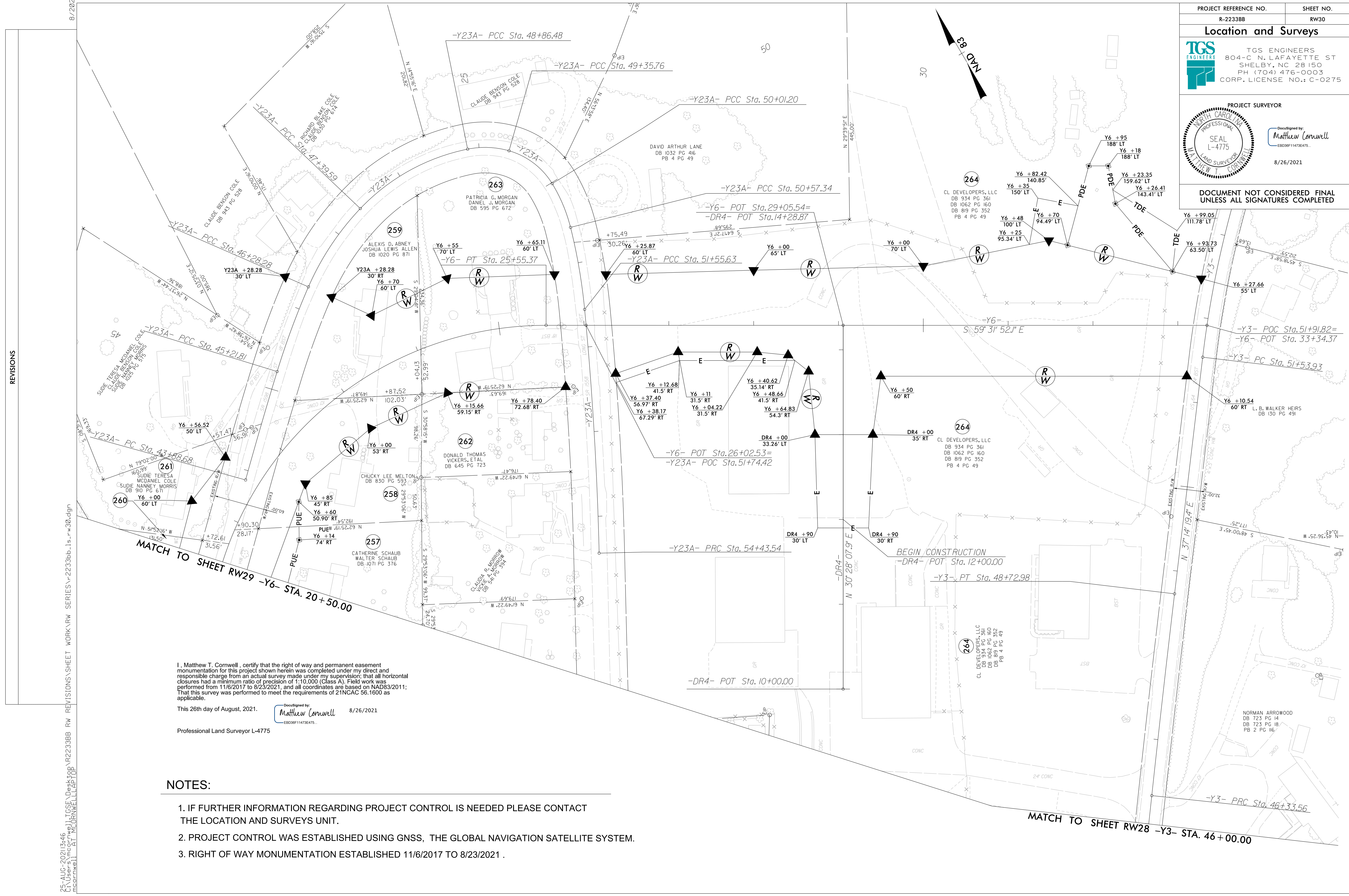



PROJECT REFERENCE NO. R-2233BB	SHEET NO. RW30
Location and Surveys	
 TGS ENGINEERS 804-C N. LAFAYETTE ST SHELBY, NC 28150 PH (704) 476-0003 CORP. LICENSE NO.: C-0275	
PROJECT SURVEYOR	
 DocuSigned by: Matthew Cornwell EBD309F11473E475... 8/26/2021	
DOCUMENT NOT CONSIDERED FINAL UNLESS ALL SIGNATURES COMPLETED	



REVISIONS

8-AUG-2021 13:46
C:\Users\mccornwell\OneDrive\Documents\Projects\2233BB\RW REVISIONS\Sheet\WORK\RW SERIES\R-2233BB-1s-rw30.dgn
mccornwell

I, Matthew T. Cornwell, certify that the right of way and permanent easement monumentation for this project shown herein was completed under my direct and responsible charge from an actual survey made under my supervision; that all horizontal closures had a minimum ratio of precision of 1:10,000 (Class A). Field work was performed from 11/6/2017 to 8/23/2021, and all coordinates are based on NAD83/2011; That this survey was performed to meet the requirements of 21NCAC 56.1600 as applicable.

This 26th day of August, 2021.
 DocuSigned by:

 EBD309F11473E475...
 Professional Land Surveyor L-4775

NOTES:

1. IF FURTHER INFORMATION REGARDING PROJECT CONTROL IS NEEDED PLEASE CONTACT THE LOCATION AND SURVEYS UNIT.
2. PROJECT CONTROL WAS ESTABLISHED USING GNSS, THE GLOBAL NAVIGATION SATELLITE SYSTEM.
3. RIGHT OF WAY MONUMENTATION ESTABLISHED 11/6/2017 TO 8/23/2021.

MATCH TO SHEET RW28 -Y3- STA. 46+00.00

MATCH TO SHEET RW29 -Y6- STA. 20+50.00