
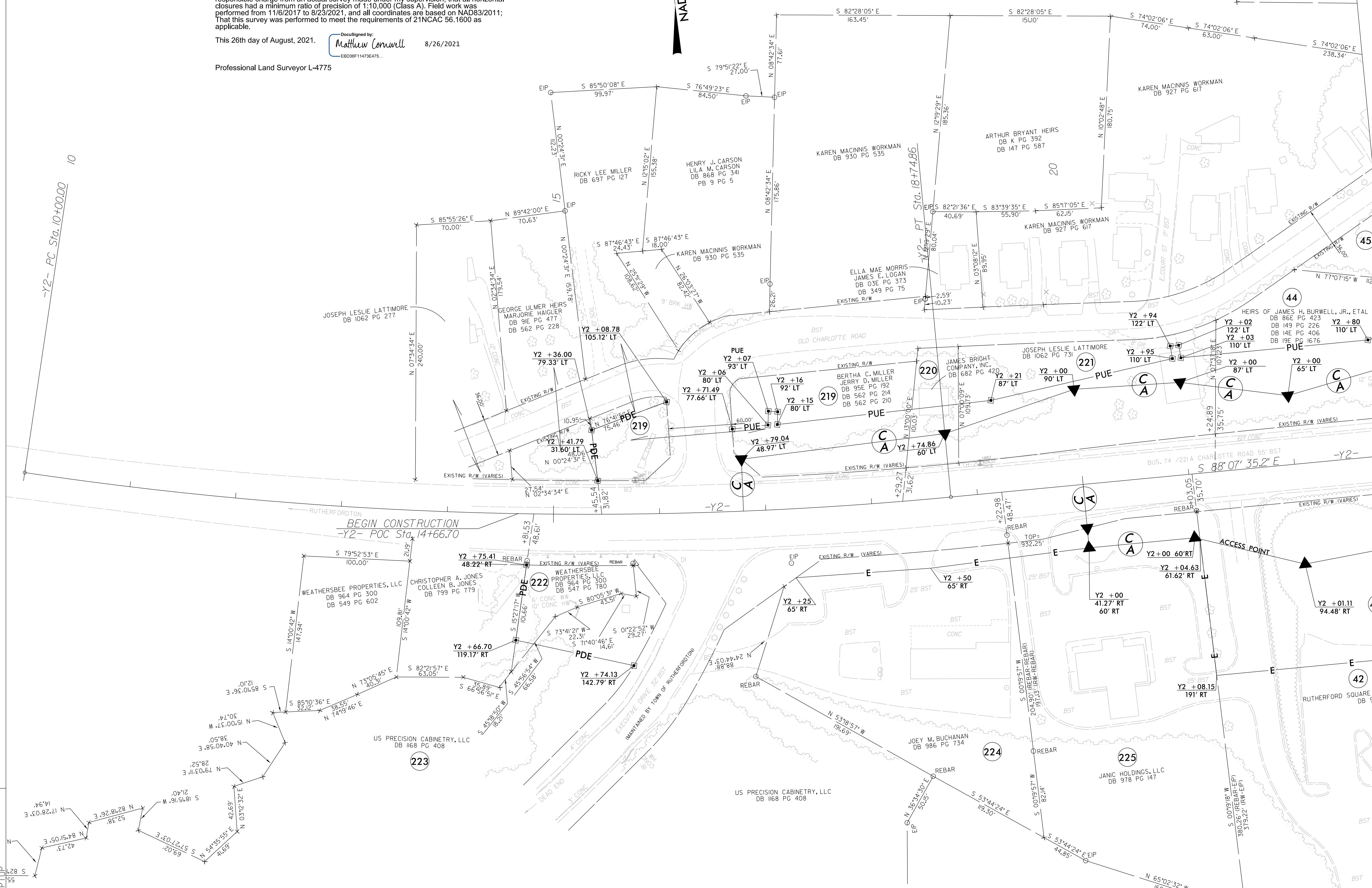
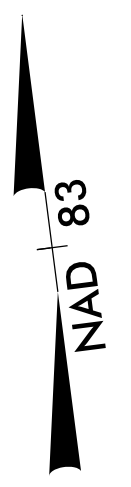


I, Matthew T. Cornwell, certify that the right of way and permanent easement monumentation for this project shown herein was completed under my direct and responsible charge from an actual survey made under my supervision; that all horizontal closures had a minimum ratio of precision of 1:10,000 (Class A). Field work was performed from 11/6/2017 to 8/23/2021, and all coordinates are based on NAD83/2011; That this survey was performed to meet the requirements of 21NCAC 56.1600 as applicable.

This 26th day of August, 2021.
 DocuSigned by:

 Matthew Cornwell
 EBD36F11473E475...
 8/26/2021
 Professional Land Surveyor L-4775



-Y2- PC Sta. 10+00.00 10

MATCH TO SHEET RW06 -Y2- STA. 23+00.00

CURVE DATA FOR -Y2-
 PI Sta 14+39.59
 $\Delta = 13^{\circ} 54' 53.5"$ (LT)
 $D = 135' 25.9"$
 $L = 874.86'$
 $T = 439.59'$
 $R = 3602.33'$
 $SE = .03$
 $RUNOFF = 117.00'$

NOTES:

1. IF FURTHER INFORMATION REGARDING PROJECT CONTROL IS NEEDED PLEASE CONTACT THE LOCATION AND SURVEYS UNIT.
2. PROJECT CONTROL WAS ESTABLISHED USING GNSS, THE GLOBAL NAVIGATION SATELLITE SYSTEM.
3. RIGHT OF WAY MONUMENTATION ESTABLISHED 11/6/2017 TO 8/23/2021 .

REVISIONS

25-AUG-2021 10:51 AM C:\Users\mccornwell\OneDrive\Documents\REVISED SHEET WORK\RW REVISIONS\REVISED SHEET WORK\RW SERIES\R-2233BB-1s.rw23.dgn
 mccornwell