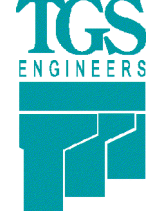

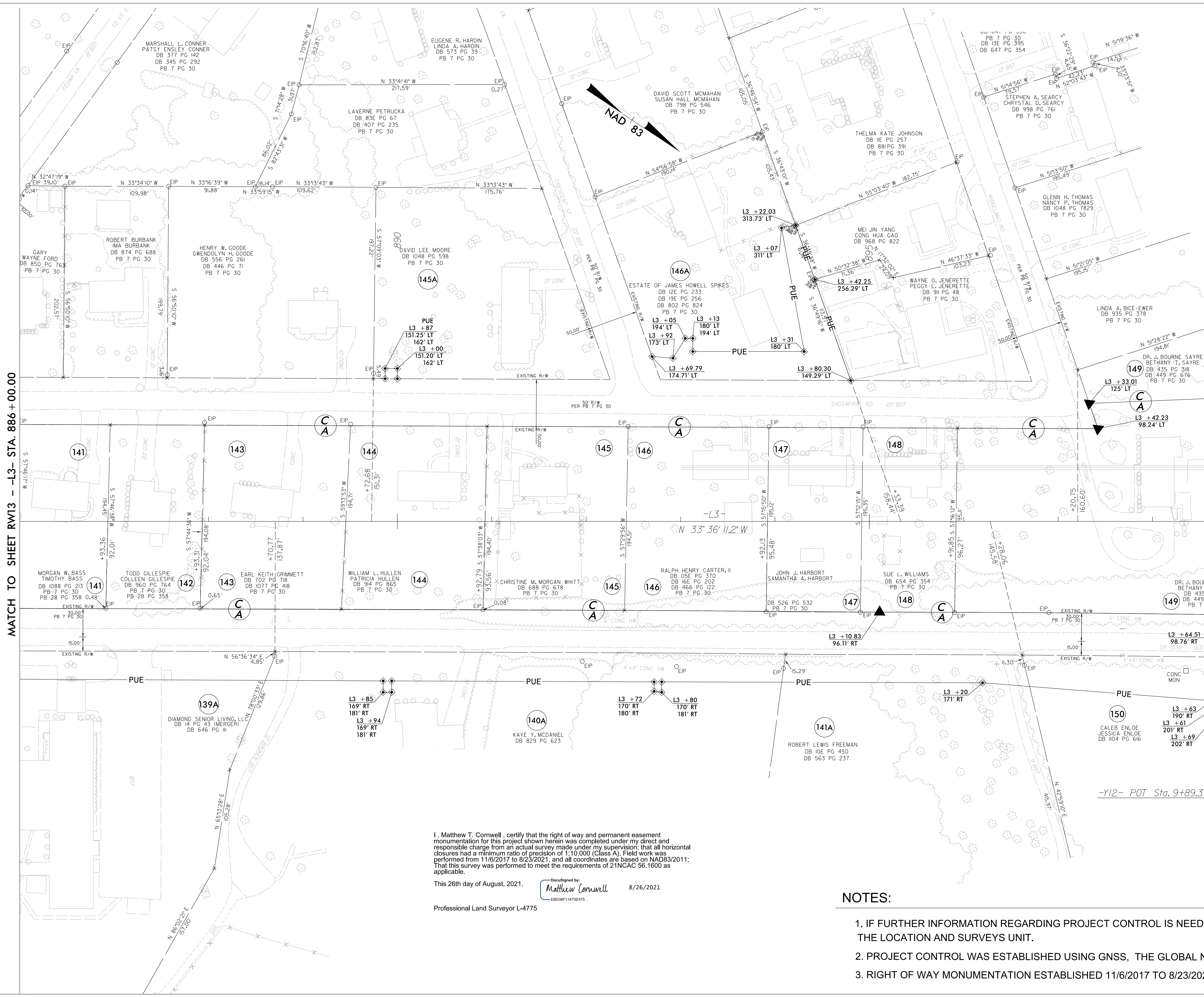


PROJECT REFERENCE NO. R-2233BB	SHEET NO. RW14
Location and Surveys	
 TGS ENGINEERS 804-C N. LAFAYETTE ST SHELBY, NC 28150 PH (704) 476-0003 CORP. LICENSE NO.: C-0275	
PROJECT SURVEYOR	
 Documented by: Matthew Cornwell <small>EBD36F11473E475</small> 8/26/2021	
DOCUMENT NOT CONSIDERED FINAL UNLESS ALL SIGNATURES COMPLETED	




REVISIONS

MATCH TO SHEET RW13 - L3- STA. 886 + 00.00

MATCH TO SHEET RW15 - L3- STA. 899 + 00.00

I, Matthew T. Cornwell, certify that the right of way and permanent easement monumentation for this project shown herein was completed under my direct and responsible charge from an actual survey made under my supervision; that all horizontal closures had a minimum ratio of precision of 1:10,000 (Class A). Field work was performed from 11/6/2017 to 8/23/2021, and all coordinates are based on NAD83/2011; That this survey was performed to meet the requirements of 21NCAC 56.1600 as applicable.

This 26th day of August, 2021.  8/26/2021
 Professional Land Surveyor L-4775

NOTES:

1. IF FURTHER INFORMATION REGARDING PROJECT CONTROL IS NEEDED PLEASE CONTACT THE LOCATION AND SURVEYS UNIT.
2. PROJECT CONTROL WAS ESTABLISHED USING GNSS, THE GLOBAL NAVIGATION SATELLITE SYSTEM.
3. RIGHT OF WAY MONUMENTATION ESTABLISHED 11/6/2017 TO 8/23/2021 .

8/26/2021 10:41 AM C:\projects\ncdot\147-2233BB\Right of Way Staking\TO SUBMIT REVISIONS_210826\R2233BB_RW REVISIONS\SHEET WORK\RW SERIES\R2233BB_1s.rw14.dgn
 Matthew Cornwell