

5/14/99

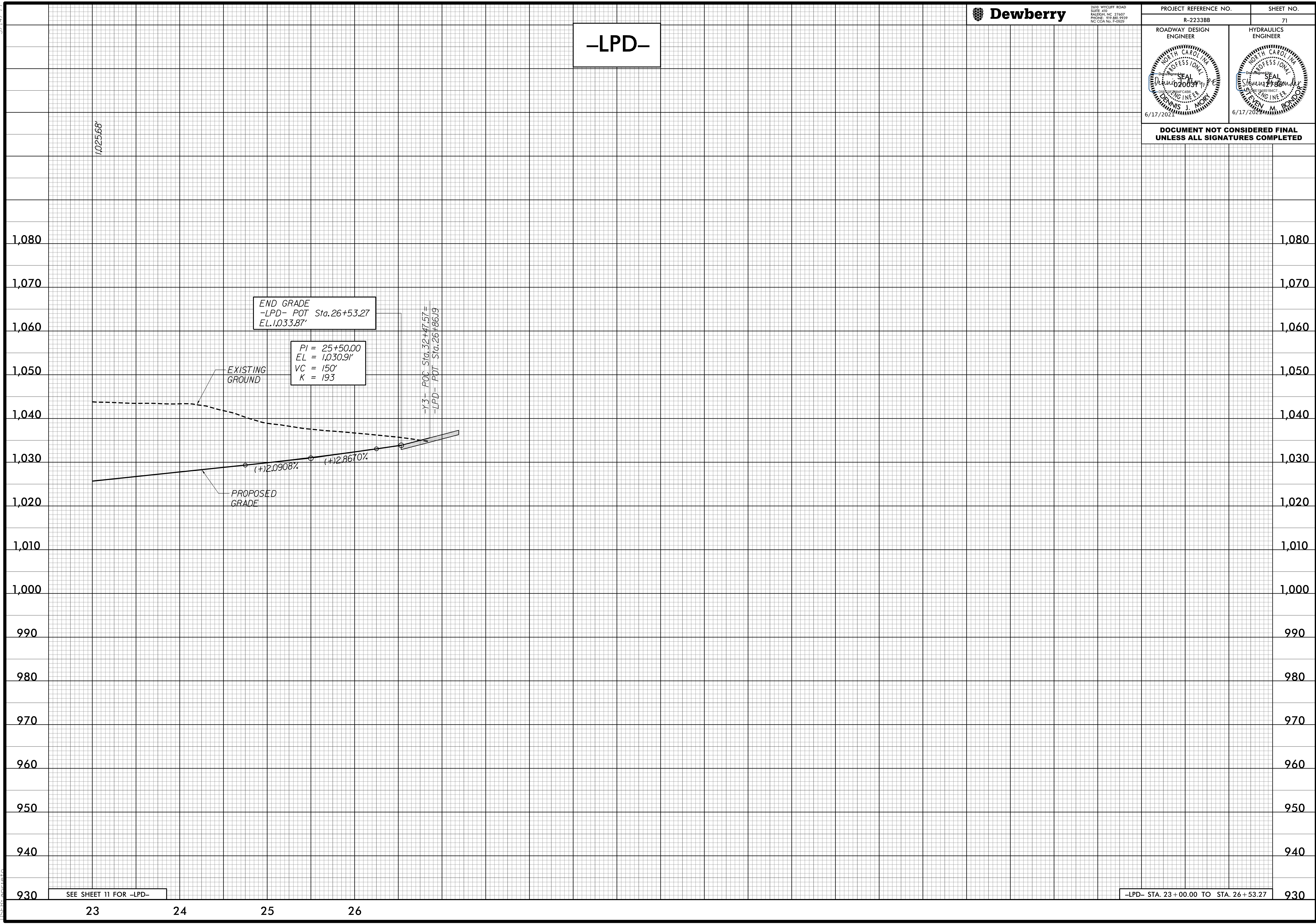


2610 WYCLIFF ROAD
SUITE 410
RALEIGH, NC 27607
PHONE: 919.881.9299
NC COA No. F-09251

PROJECT REFERENCE NO. R-2233BB	SHEET NO. 71
ROADWAY DESIGN ENGINEER 	HYDRAULICS ENGINEER

DOCUMENT NOT CONSIDERED FINAL
UNLESS ALL SIGNATURES COMPLETED

-LPD-



1,025.68'

END GRADE
-LPD- POT Sta. 26+53.27
EL. 1,033.87'

PI = 25+50.00
EL = 1,030.91'
VC = 150'
K = 193

-X3- POC Sta. 32+47.57 =
-LPD- POT Sta. 26+86.19

EXISTING
GROUND

PROPOSED
GRADE

(+2.0908%

(+2.8610%

SEE SHEET 11 FOR -LPD-

-LPD- STA. 23+00.00 TO STA. 26+53.27

4/24/2020 4:48:30 PM
R:\2233BB\RDY_PEL_71.DGN
USER: dmoran

23

24

25

26

930

940

950

960

970

980

990

1,000

1,010

1,020

1,030

1,040

1,050

1,060

1,070

1,080