

5/14/99

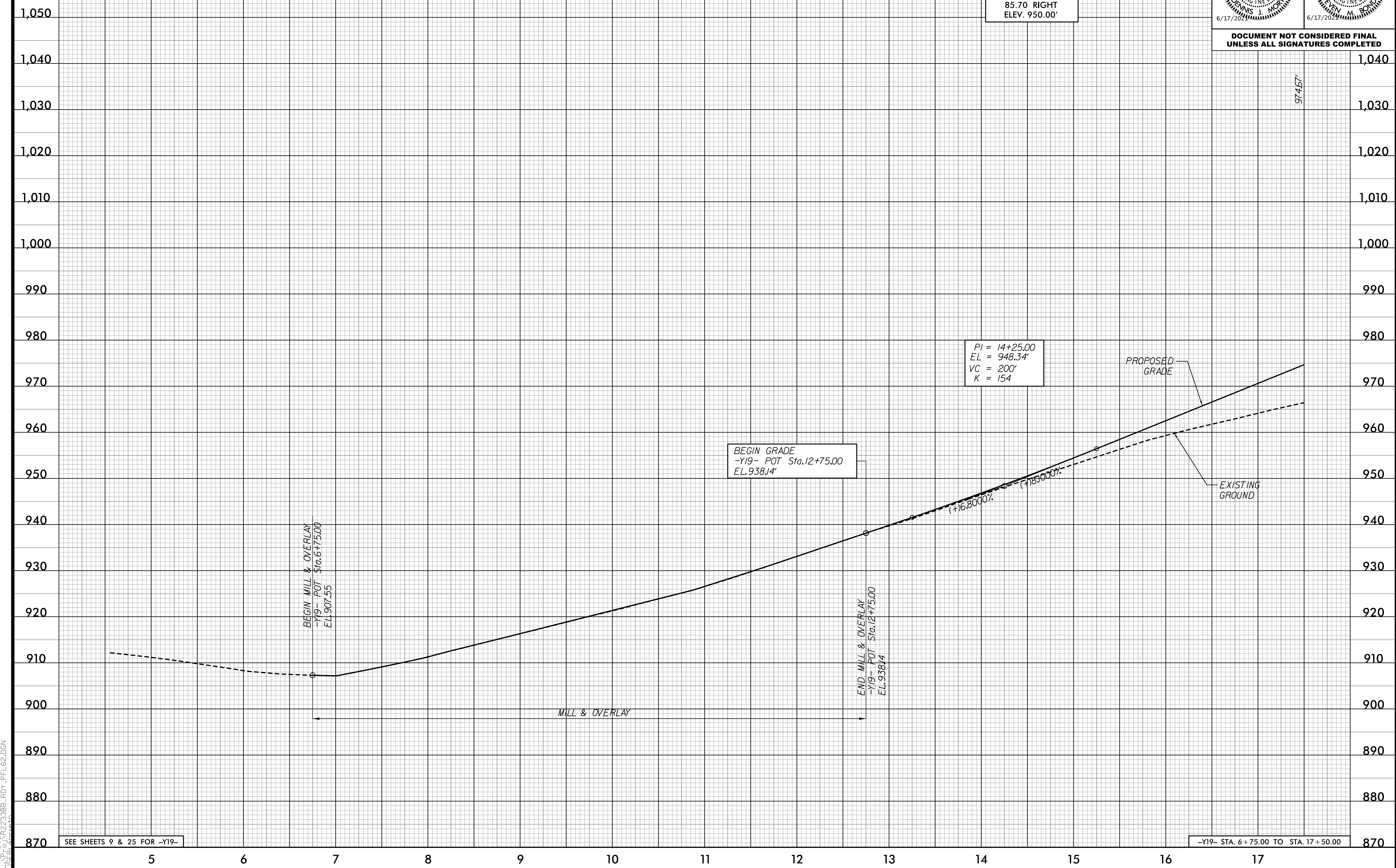
DITCH LEGEND
RIGHT DITCH - - - - -

ROADWAY DESIGN ENGINEER 	HYDRAULICS ENGINEER
-----------------------------	-------------------------

BM #12
-Y19- STA. 14 + 54.81
85.70 RIGHT
ELEV. 950.00'

-Y19-

**DOCUMENT NOT CONSIDERED FINAL
UNLESS ALL SIGNATURES COMPLETED**



974.67'

PI = 14+25.00
EL = 948.34'
VC = 200'
K = 154

BEGIN GRADE
-Y19- POT Sta. 12+75.00
EL. 938.14'

BEGIN MILL & OVERLAY
-Y19- POT Sta. 6+75.00
EL. 907.55

END MILL & OVERLAY
-Y19- POT Sta. 12+75.00
EL. 938.14

MILL & OVERLAY

PROPOSED GRADE

EXISTING GROUND

SEE SHEETS 9 & 25 FOR -Y19-

-Y19- STA. 6 + 75.00 TO STA. 17 + 50.00

4/24/2020 4:17:51 PM
R:\233368_P01_PFL62.DGN
USER: dmoran