

5/14/99



2610 WYCLIFF ROAD  
SUITE 410  
RALEIGH, NC 27607  
PHONE: 919.881.9299  
NC COA No. F-09251

PROJECT REFERENCE NO.	SHEET NO.
R-2233BB	58

ROADWAY DESIGN ENGINEER	HYDRAULICS ENGINEER

DOCUMENT NOT CONSIDERED FINAL UNLESS ALL SIGNATURES COMPLETED

# -LPB-

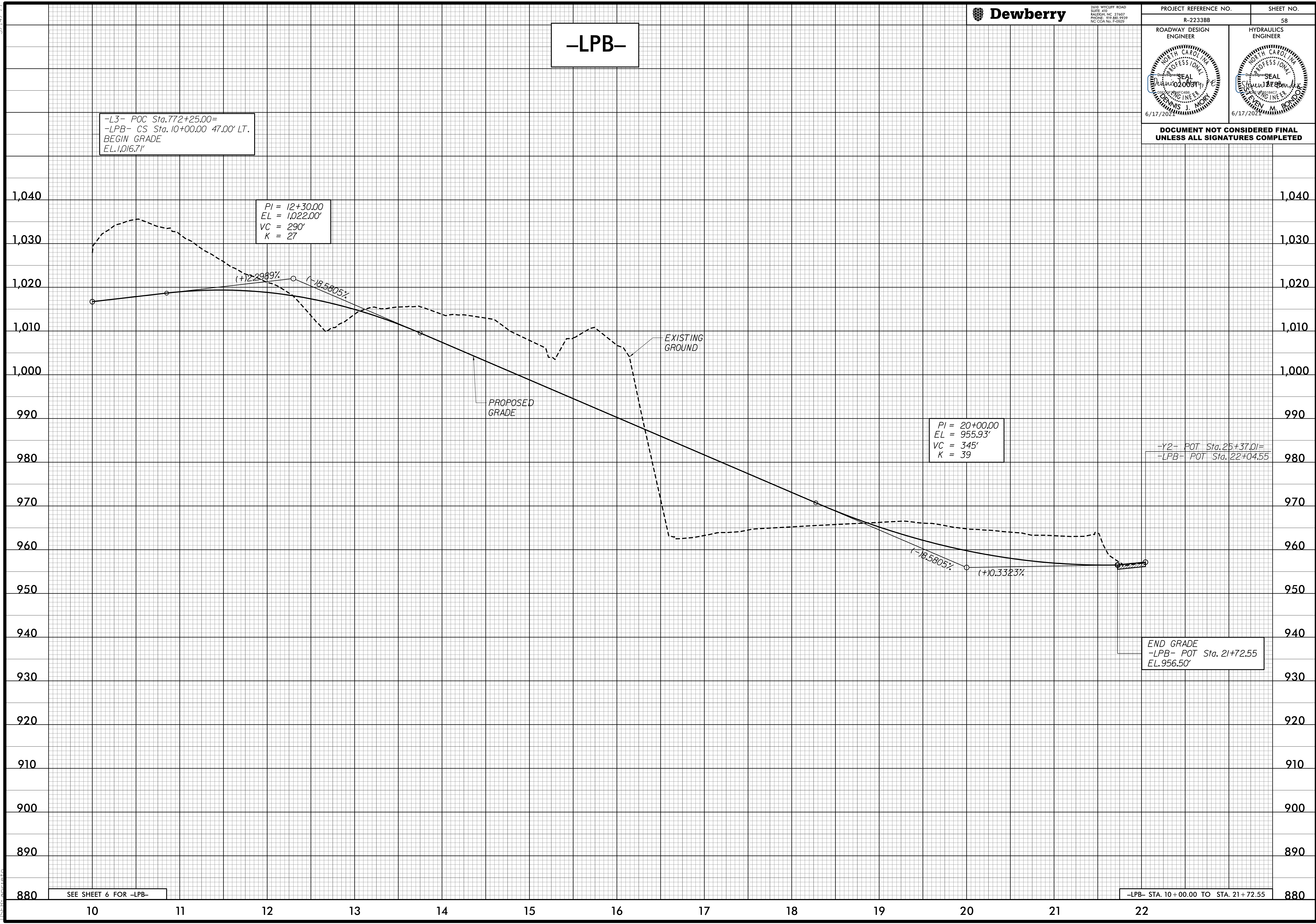
-L3- POC Sta. 772+25.00=  
-LPB- CS Sta. 10+00.00 47.00' LT.  
BEGIN GRADE  
EL. 1,016.71'

PI = 12+30.00  
EL = 1,022.00'  
VC = 290'  
K = 27

PI = 20+00.00  
EL = 955.93'  
VC = 345'  
K = 39

-Y2- POT Sta. 25+37.01=  
-LPB- POT Sta. 22+04.55

END GRADE  
-LPB- POT Sta. 21+72.55  
EL. 956.50'



SEE SHEET 6 FOR -LPB-

-LPB- STA. 10+00.00 TO STA. 21+72.55

4/24/2020 4:17:28 PM  
R-2233BB\_P01\_PFL58.DGN  
15:55:20